



PARTS BOOK

FLAIL HEADS

• 60"/102" GANG • 3PT HITCH MOUNT • 5.10.18 •

DIAMOND MOWERS, LLC
350 E 60th St. North
Sioux Falls, SD 57104

FOR WARRANTY CALL DIAMOND MOWERS DIRECT:
888-960-0364
OUR TECHNICIANS WILL DIAGNOSE YOUR SITUATION
OVER THE PHONE TO GET YOU UP AND RUNNING QUICKLY.

Phone: 605-977-3300
Fax: 605-655-5870
www.diamondmowers.com

DEMAND BRILLIANCE.

© DIAMOND MOWERS, LLC



Foreword

This manual contains the parts breakdown and identification of the various components and structures that make up your mower implement.

The illustrations, drawings, and diagrams in this manual are based on the latest information available at the time of publication. Your machine may have product improvements and features not yet contained in this parts manual.

Diamond Mowers, LLC reserves the right to make changes at any time without notice or obligation.

Diamond Mowers, LLC™ and Wetblade™ are trademarks of Diamond Mowers, LLC.

This manual should be consulted prior and while assembling the unit, and anytime parts or assembly clarification is needed.

Copyright© 2016 Diamond Mowers, LLC

All rights reserved. While every precaution has been taken in the preparation of this manual, the publisher assumes no responsibility for errors or omissions. No part of this book covered by the copyrights hereon may be reproduced or copied in any form or by any means - graphic, electronic, or mechanical, including photocopying, taping, or information storage and retrieval systems - without written permission of the publisher.



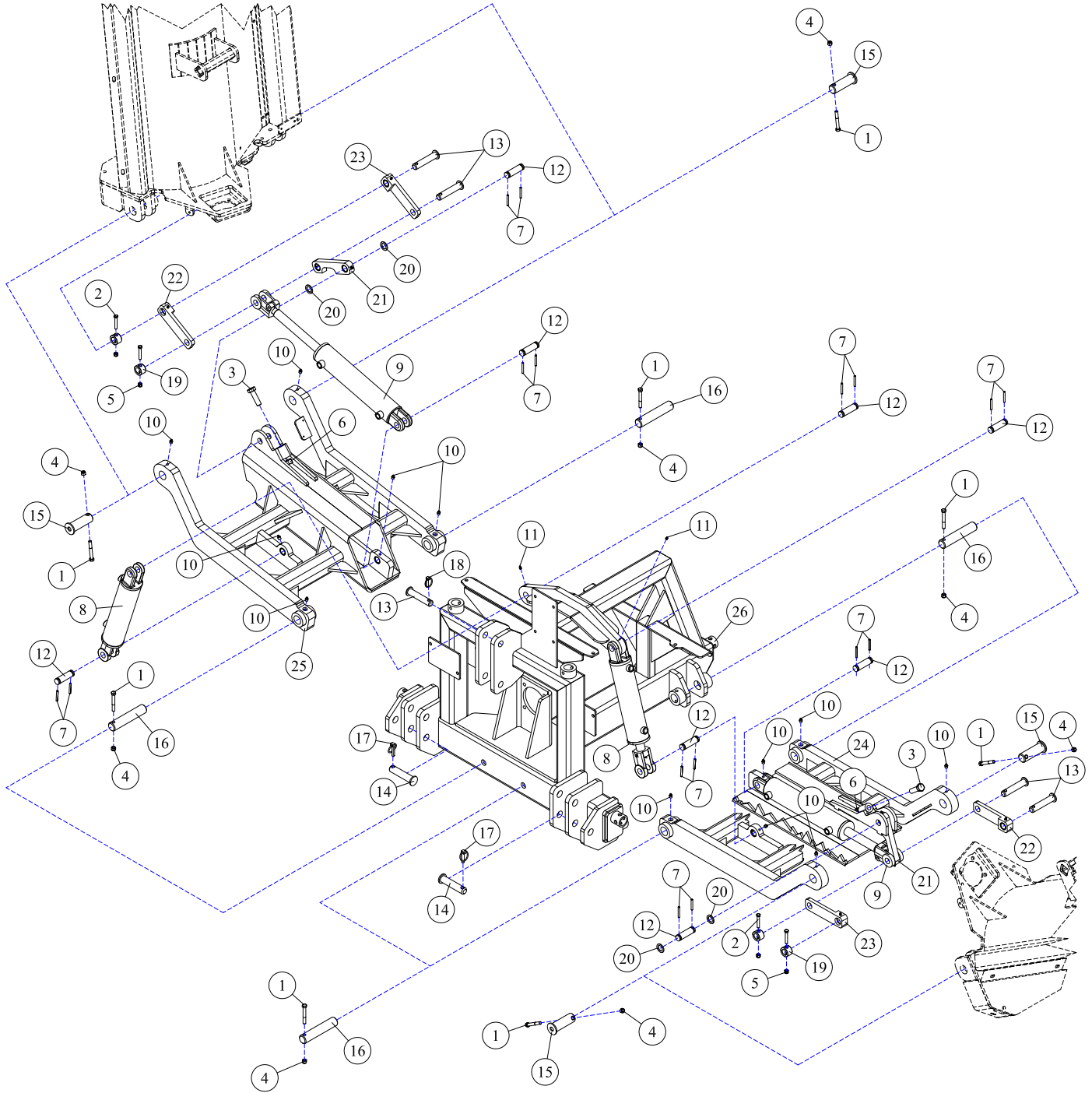
Table of Contents

IMPLEMENT ASSEMBLIES	4
IMPLEMENT ASSEMBLIES - 3-POINT GANG FLAIL, MAINFRAME	5
IMPLEMENT ASSEMBLIES - 3-POINT GANG FLAIL, LIFT FEED, TRACTOR REMOTES ..	6
IMPLEMENT ASSEMBLIES - 3-POINT GANG FLAIL, LIFT FEED, LIFT VALVE	7
IMPLEMENT ASSEMBLIES - 3-POINT GANG FLAIL, DECK FEED	9
IMPLEMENT ASSEMBLIES - DECAL IDENTIFICATION	12
FRONT 3PT HITCH, MAINFRAME	13
FLAIL HEADS	14
SIDE HD FLAIL HEAD - 60" CUTTER ASSEMBLY, RIGHT SIDE	15
SIDE HD FLAIL HEAD - 60" CUTTER ASSEMBLY, LEFT SIDE	16
DECAL IDENTIFICATION - SIDE FLAIL	17
SIDE HD FLAIL HEAD - 60" DRIVE ASSEMBLY, RIGHT	18
SIDE HD FLAIL HEAD - 60" DRIVE ASSEMBLY, LEFT	19
FRONT HD FLAIL HEAD - 102" CUTTER ASSEMBLY	20
DECAL IDENTIFICATION - REAR/FRONT FLAIL	21
FRONT HD FLAIL HEAD - 102" DRIVE ASSEMBLY	22
FRONT HD FLAIL HEAD - 102" CASTER ASSEMBLY	23
HD FLAIL HEAD - BLADE CONFIGURATIONS	24
DECK ASSEMBLIES	25
30-0004 - PUMP ASSEMBLY	26
21-2144 - VALVE ASSEMBLY	27
39-0106 - VALVE ASSEMBLY	28
17-0014 - FILTER ASSEMBLY	29
29-0015 - DRIVE LINE ASSEMBLY	30
30-0509 - MOTOR ASSEMBLY	31
ELECTRICAL ASSEMBLIES	32
POWER SWITCHBOX - TRIPLE HEAD	33
LIMIT SWITCH - DRAFT BEAM HEIGHT LIMITER	34
LIFT ASSEMBLIES	35
14-0001 - 3X10 WELDED CYLINDER	36
14-0004 - 3X12 WELDED CYLINDER, SLUGGED	37
14-0009 - 3X12 TIE-ROD CYLINDER	38
16-0058 - CYLINDER LOCK, DUAL	39
LIFT VALVE - MECHANICAL CABLE, 4-SPOOL, POWER BEYOND	40
LIFT VALVE - MECHANICAL CABLE, 4-SPOOL, LOAD SENSE	41
LIFT VALVE - MECHANICAL CABLE, 4-SPOOL, OPEN CENTER	42
CONTROLS ASSEMBLY - MECHANICAL LEVERS AND CABLES	43
CONTROLS ASSEMBLY - CONTROL STAND, FLOOR MOUNT, QD	44
MISCELLANEOUS ASSEMBLIES	45
BEARING - GROUND ROLLER, 10-1051	46

IMPLEMENT ASSEMBLIES



IMPLEMENT ASSEMBLIES - 3-POINT GANG FLAIL, MAINFRAME

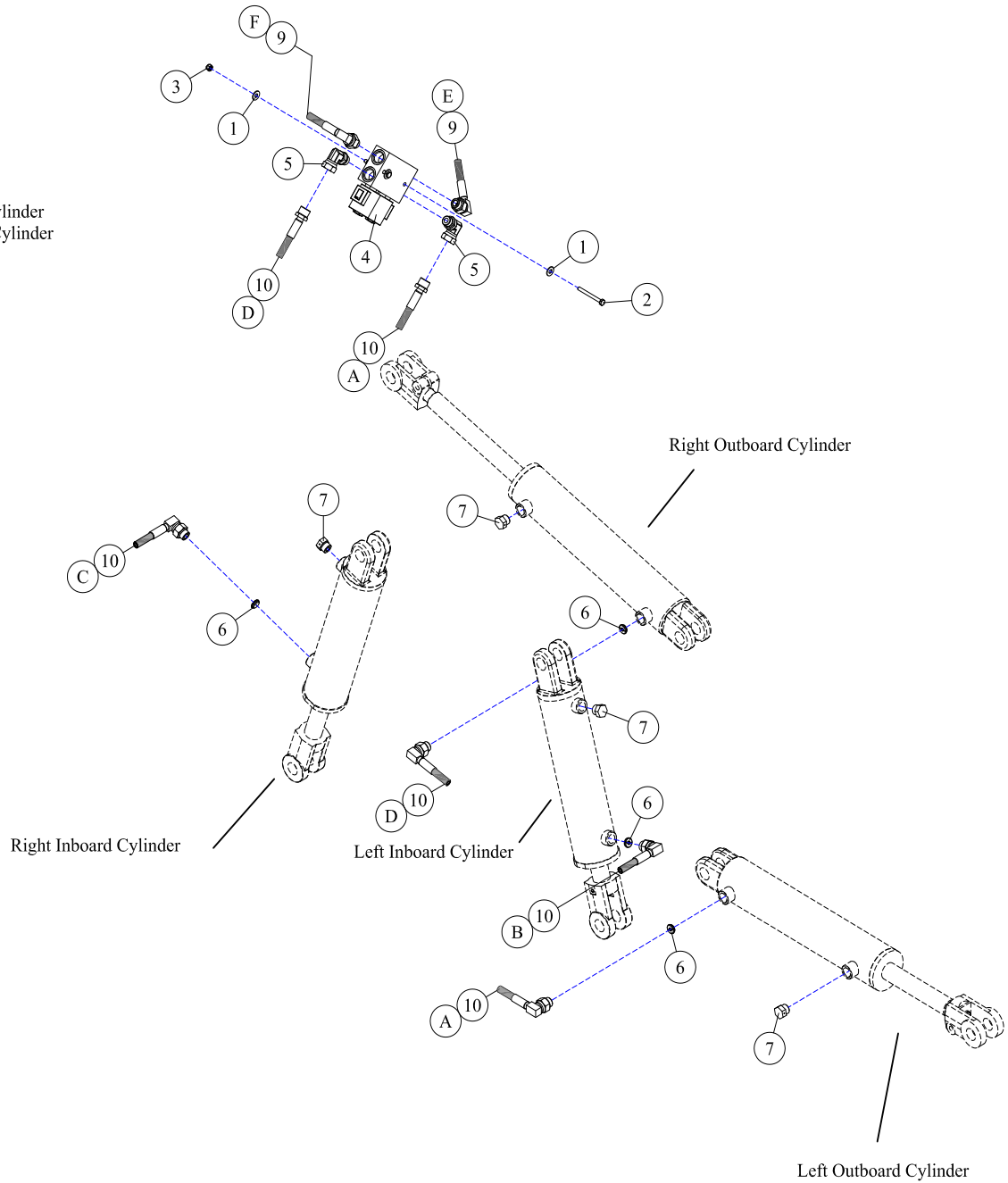


REF#	PARTS DESCRIPTION	REQ	PART #
1	7/16 X 3-1/4 NC HEX CAPSCREW	8	11-0510
2	3/8 X 2-1/4 NC HEX CAPSCREW	4	11-0513
3	3/4 X 2-1/2 NC HEX CAPSCREW	2	11-0563
4	7/16 NC NYLOCK NUT	8	11-1003
5	3/8 NC NYLOCK NUT	4	11-1024
6	3/4 NC HEX NUT	2	11-1033
7	ROLL PIN	16	11-2005
8	3 X 10 CYLINDER (INBOARD)	2	14-0001
9	3 X 12 CYLINDER (OUTBOARD)	2	14-0004
10	GREASE ZERK, 1/8" MALE NPT	12	23-0003
11	GREASE ZERK, 1/4" MALE NPT	2	23-0004
12	CLEVIS PIN	8	27-0004
13	LINKAGE PIN	5	27-0009

REF#	PARTS DESCRIPTION	REQ	PART #
14	LOWER 3-POINT PIN	2	27-0028
15	PIN, OUTER DRAFT BEAM	4	27-0509
16	PIN, INNER DRAFT BEAM	4	27-0510
17	LYNCH PIN, 7/16"	2	27-1005
18	LYNCH PIN, 5/16"	1	27-1028
19	BOSS	4	34-0002
20	BUSHING	4	34-0060
21	PIVOT LINKAGE	2	41-0025
22	LINKAGE ARM, LEFT	2	41-0026
23	LINKAGE ARM, RIGHT	2	41-0027
24	LEFT DRAFT BEAM	1	41-1184
25	RIGHT DRAFT BEAM	1	41-1185
26	FRAME	1	41-5370

IMPLEMENT ASSEMBLIES - 3-POINT GANG FLAIL, LIFT FEED, TRACTOR REMOTES

- A-Left Outboard Cylinder
- B-Left Inboard Cylinder
- C-Right Inboard Cylinder
- D-Right Outboard Cylinder
- E-Lock for Left Outboard Cylinder
- F-Lock for Right Outboard Cylinder

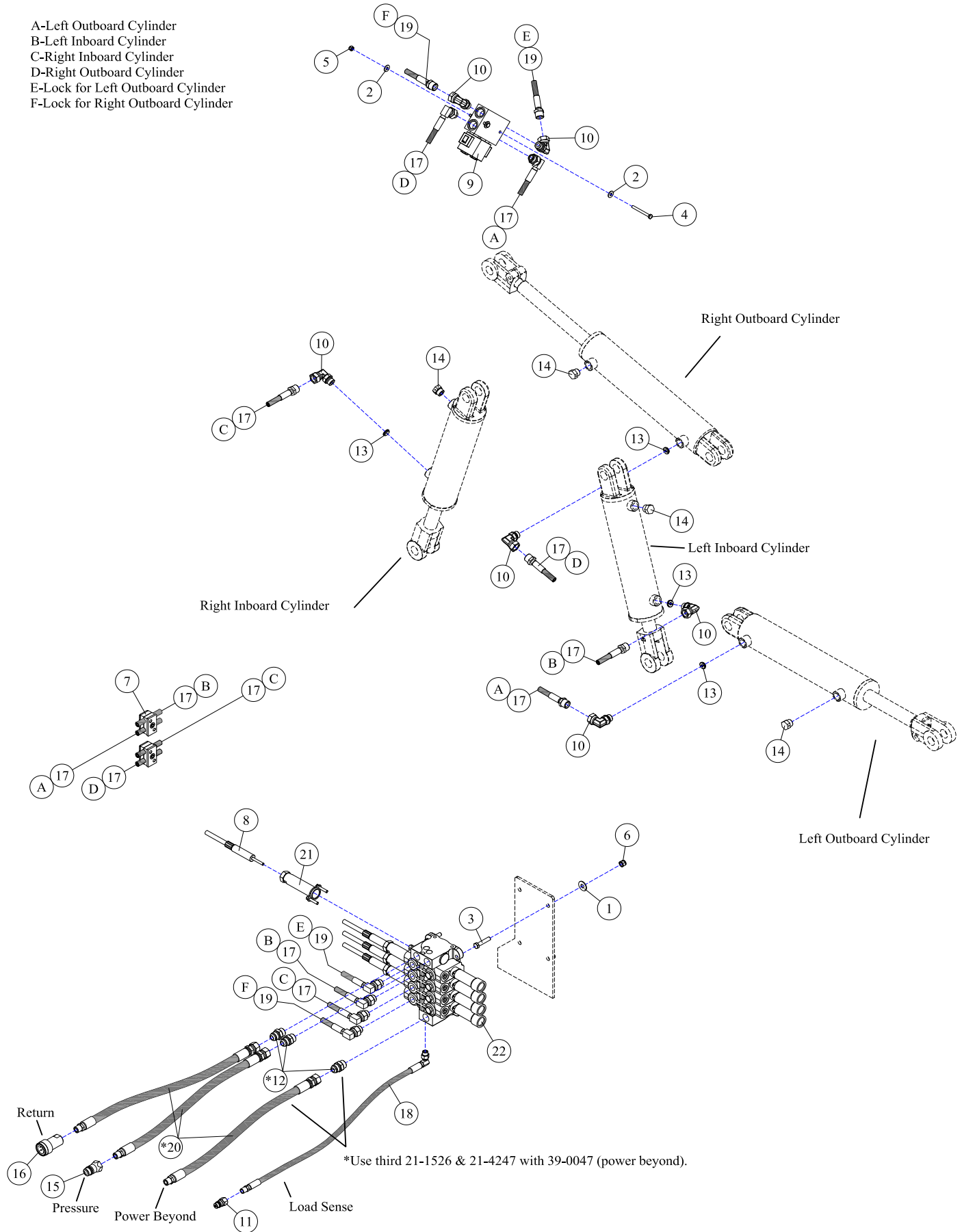


REF#	PARTS DESCRIPTION	REQ	PART #
1	1/4 FLAT WASHER GR 5	4	11-0023
2	1/4 X 2-1/2 NC HEX CAPSCREW	2	11-0591
3	1/4 NC NYLOCK NUT	2	11-1022
4	DUAL CYLINDER LOCK-ELECTRIC	1	16-0058
5	1/2ADJ-OR X 1/2FPX-90DEG, ADAPTER	2	21-1119

REF#	PARTS DESCRIPTION	REQ	PART #
6	1/16" ORIFICE RESTRICTOR, 1/2" SAE O-RING	4	21-1551
7	1/2-OR BREATHER	4	21-2116
8	1/2" MALE QUICK COUPLER	4	21-2119
9	HOSE 1/4 X 70 (1/2MORB-90 X 1/2MP)	2	21-2292
10	HOSE 1/4 X 128 (1/2MORB-90 X 1/2MP)	4	21-2461

IMPLEMENT ASSEMBLIES - 3-POINT GANG FLAIL, LIFT FEED, LIFT VALVE

- A-Left Outboard Cylinder
- B-Left Inboard Cylinder
- C-Right Inboard Cylinder
- D-Right Outboard Cylinder
- E-Lock for Left Outboard Cylinder
- F-Lock for Right Outboard Cylinder

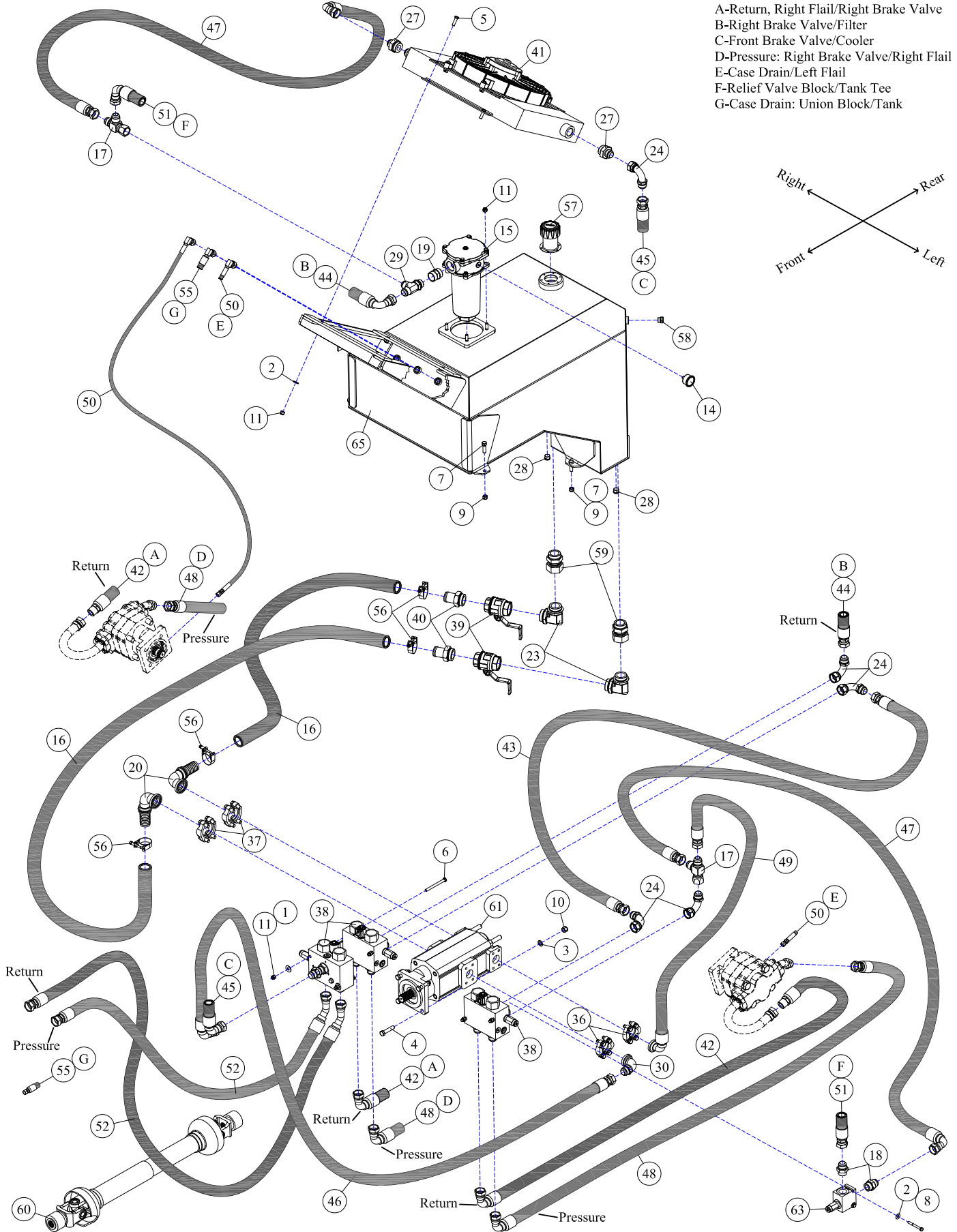
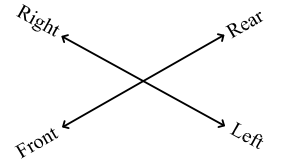


IMPLEMENT ASSEMBLIES - 3-POINT GANG FLAIL, LIFT FEED, LIFT VALVE

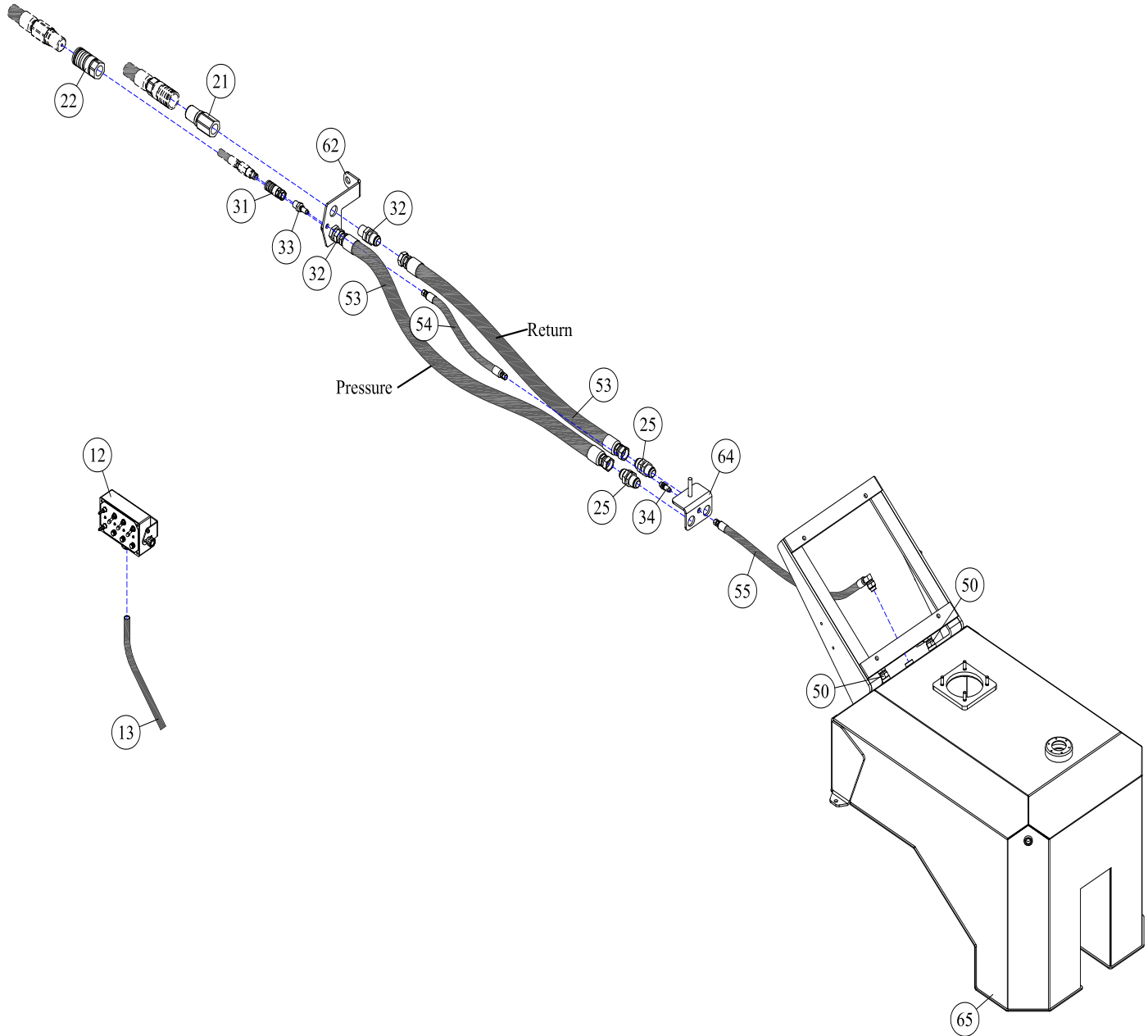
REF#	PARTS DESCRIPTION	REQ	PART #
1	3/8 FLAT WASHER GR 5	4	11-0009
2	1/4 FLAT WASHER GR 5	4	11-0023
3	3/8 X 1-3/4 NC HEX CAPSCREW	4	11-0521
4	1/4 X 2-1/2 NC HEX CAPSCREW	2	11-0591
5	1/4 NC NYLOCK NUT	2	11-1022
6	3/8 NC NYLOCK NUT	4	11-1024
7	1/4" DOUBLE HOSE CLAMP	2	11-2047
8	CABLE, 144" HUSCO MOUNT	4	12-0058
9	DUAL CYLINDER LOCK-ELECTRIC	1	16-0058
10	1/2ADJ-OR X 1/2FPX-90DEG, ADAPTER	6	21-1119
11	1/4" MALE QUICK COUPLER	1	21-1434
*12	5/8MJIC X 5/8MORB, ADAPTER	2-3	21-1526
13	1/16" ORIFICE RESTRICTOR, 1/2" SAE O-RING	4	21-1551
14	1/2-OR BREATHER	4	21-2116
15	1/2" MALE QUICK COUPLER	1	21-2119
16	1/2" FEMALE QUICK COUPLER	1	21-2121
17	HOSE 1/4 X 100 (1/2MORB-90 X 1/2MP)	4	21-2229
18	HOSE 1/4 X 36 (3/8MORB-90DEG X 1/4MP)	1	21-2475
19	HOSE 1/4 X 30 (1/2MORB-90 X 1/2MP)	2	21-4181
*20	HOSE 1/2 X 36 (5/8FJIC X 1/2MP)	2-3	21-4247
21	HUSCO MOUNTING KIT	4	39-0610
22	VALVE, 4-SPOOL		
	VALVE, 4-SPOOL, LOAD SENSE	1	39-0050
	VALVE, 4-SPOOL, OPEN CENTER	1	39-0049
	VALVE, 4-SPOOL, POWER BEYOND	1	39-0047

IMPLEMENT ASSEMBLIES - 3-POINT GANG FLAIL, DECK FEED

- A-Return, Right Flail/Right Brake Valve
- B-Right Brake Valve/Filter
- C-Front Brake Valve/Cooler
- D-Pressure: Right Brake Valve/Right Flail
- E-Case Drain/Left Flail
- F-Relief Valve Block/Tank Tee
- G-Case Drain: Union Block/Tank



IMPLEMENT ASSEMBLIES - 3-POINT GANG FLAIL, DECK FEED



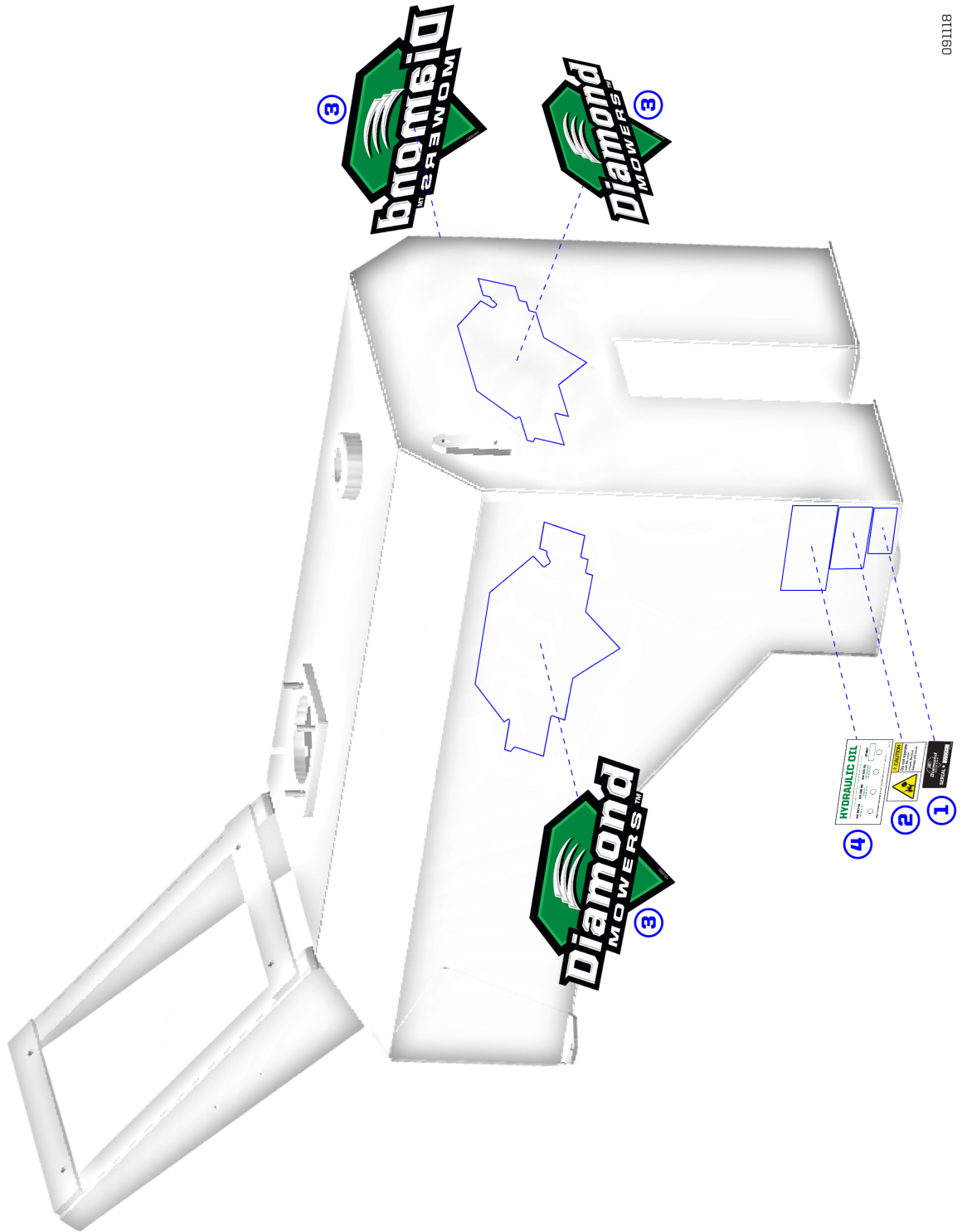
IMPLEMENT ASSEMBLIES - 3-POINT GANG FLAIL, DECK FEED

REF#	PARTS DESCRIPTION	REQ	PART #
1	3/8 FLAT WASHER	6	11-0009
2	5/16 FLAT WASHER GR5	6	11-0015
3	1/2 SAE FLAT WASHER GR8	4	11-0042
4	1/2 X 2-1/4 NC HEX CAPSCREW	4	11-0531
5	3/8 X 1-1/4 NC HEX CAPSCREW	4	11-0533
6	3/8 X 4 NC HEX CAPSCREW	6	11-0581
7	7/16 X 1-1/2 NC HEX CAPSCREW	4	11-0585
8	5/16 X 2-3/4 NC HEX CAPSCREW	2	11-0780
9	7/16 NC NYLOCK NUT	4	11-1003
10	1/2 NC NYLOCK NUT	4	11-1018
11	3/8 NC NYLOCK NUT	14	11-1024
12	SWITCH BOX	1	16-0171
13	HARNESS	1	16-0172
14	FILTER GAUGE	1	17-0003
15	FILTER ASSEMBLY	1	17-0014
16	HOSE 1-1/2 SUCTION BULK (SOLD/FT)	5	21-0001
17	1MJ X 1MJ X 1FJX,TEE	2	21-1003
18	1M-OR X 1MJIC, ADAPTER	2	21-1005
19	1-1/4M-OR X 1F-OR, ADAPTER	1	21-1007
20	#24FLG X 1-1/2-90DEG KING NIPPLE	2	21-1164
21	1" MALE QUICK COUPLER	1	21-1225
22	1" FEMALE QUICK COUPLER	1	21-1226
23	1-1/2 SAE MALE ADJ ELBOW 90DEG	2	21-1232
24	1MJIC X 1FJIC-90DEG, FITTING 3-3/4"	5	21-1258
25	1MJIC X 1MJIC, BULKHEAD ADAPTER	2	21-1283
26	1FJIC CAP NUT (NOT SHOWN)	2	21-1454
27	1-1/4 MORB X 1MJIC, ADAPTER	2	21-1477
28	#8 MORB HOLLOW HEX PLUG	2	21-1478
29	1MOR-ADJ X 1MJ X 1MJ, TEE	1	21-1525
30	#20FLG X 1MJIC-90DEG	1	21-1529
31	3/8 FEMALE QUICK COUPLER	1	21-1562
32	BULKHEAD, IMP X 1MJIC	2	21-1579
33	BULKHEAD, 1/2MP X 3/8MJIC	1	21-1580

REF#	PARTS DESCRIPTION	REQ	PART #
34	BULKHEAD, 3/8MJIC X 3/8MJIC	1	21-1581
35	3/8FJIC CAP NUT (NOT SHOWN)	1	21-1582
36	#20 FLANGE KIT	2	21-2105
37	#24 FLANGE KIT	2	21-2136
38	BRAKE VALVE	3	21-2144
39	1-1/2 SAE BALL VALVE	2	21-2182
40	1-1/2 SAE KING NIPPLE, LONG	2	21-2183
41	OIL COOLER AND FAN ASSY, 60K BTU	1	21-2194
42	HOSE 1 X 107 (1FJ-90DEG X IMP	2	21-3534
43	HOSE 1 X 24 (1FJIC X 1FJIC)	1	21-3617
44	HOSE 1 X 40 (1FJIC-90DEG X 1FJIC)	1	21-3673
45	HOSE 1 X 53 (1FJIC-90DEG X 1FJIC)	1	21-3792
46	HOSE 1 X 72 (1FJIC-90DEG X 1FJIC)	1	21-3830
47	HOSE 1 X 30 (1FJIC-90DEG X 1FJIC)	2	21-3856
48	HOSE 1 X 96 (1FJIC-90DEG X 1FJIC)	2	21-3857
49	HOSE 1 X 29 (#20FLG-90DEG X 1FJIC)	1	21-3911
50	HOSE 1/4 X 135 (1/2MORB-90DEG X 1/4FJIC)	2	21-4191
51	HOSE 1 X 48 (1FJIC-90DEG X 1FJIC)	1	21-4226
52	HOSE 1 X 45 (1FJIC-45DEG X 1FJIC)	2	21-4227
53	HOSE 1 X 145 (1FJIC X 1FJIC)	2	21-4228
54	HOSE 3/8 X 145 (3/8FJIC X 3/8FJIC)	1	21-4250
55	HOSE 3/8 X 70 (1/2MORB-90DEG X 3/8FJIC)	1	21-4251
56	BANDIT CLAMP	4	24-0014
57	FILL SPOUT W/ CAP	1	24-0042
58	SAE SIGHT GLASS	1	24-0094
59	TANK, 3" TUBE EXTENSION	2	28-0047
60	PTO SHAFT	1	29-0015
61	TANDEM PUMP	1	30-0004
62	UNIVERSAL BULKHEAD BRACKET	1	31-0450
63	RELIEF VALVE, 2-WAY, #16 SAE PORTS	1	39-0098
64	BULKHEAD BRACKET, DRAWBAR MNT	1	41-1340
65	HYDRAULIC TANK	1	47-0092

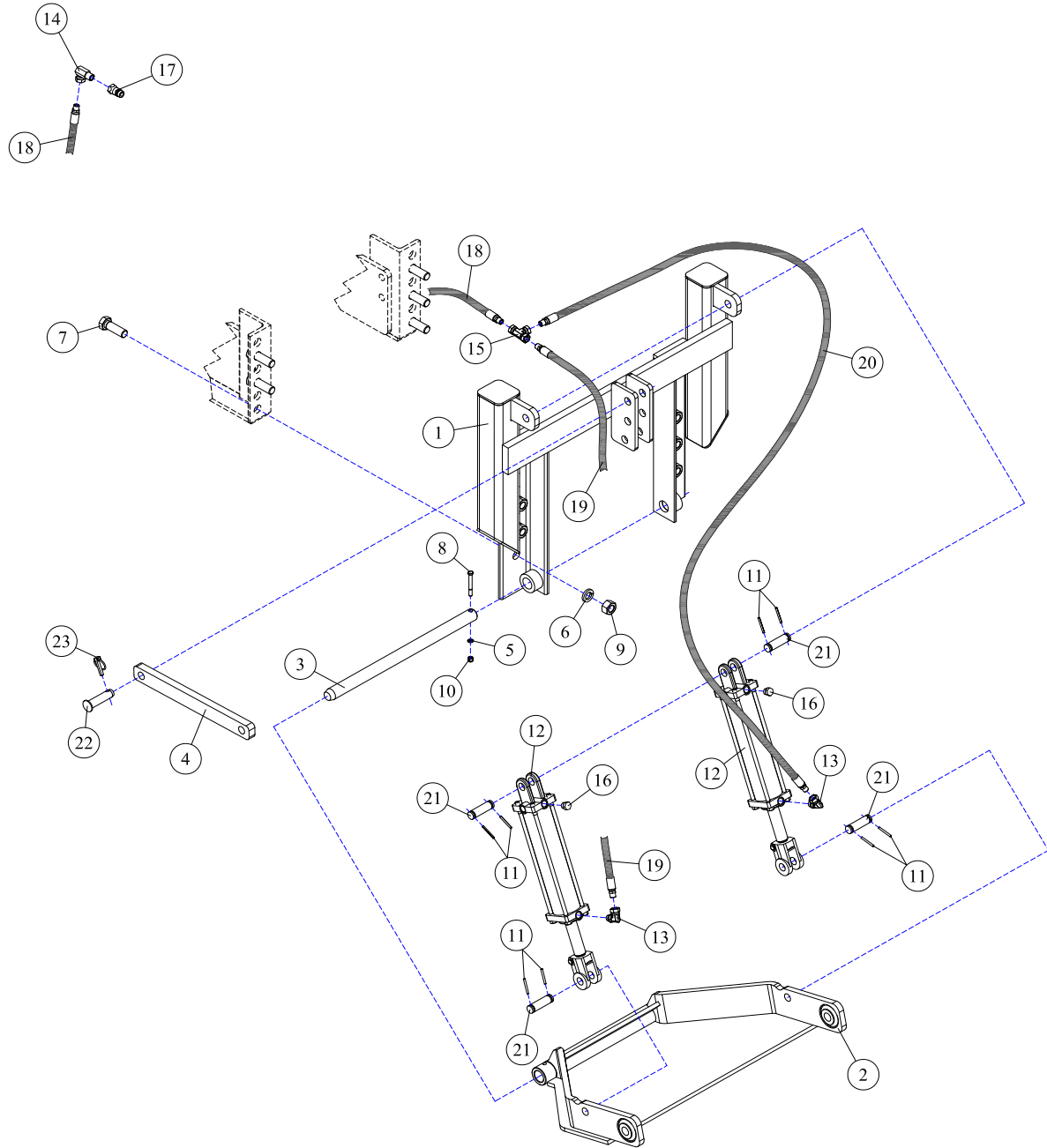
IMPLEMENT ASSEMBLIES - DECAL IDENTIFICATION

- ① SERIAL NUMBER LABEL - (not included in kit) - QTY 1
- ② PART #15-0010 - Valve Closed - QTY 1
- ③ PART #15-0053 - Diamond Mowers Logo 13" - QTY 3
- ④ PART #15-1060 - Hydraulic Oil - QTY 1



091118

FRONT 3PT HITCH, MAINFRAME



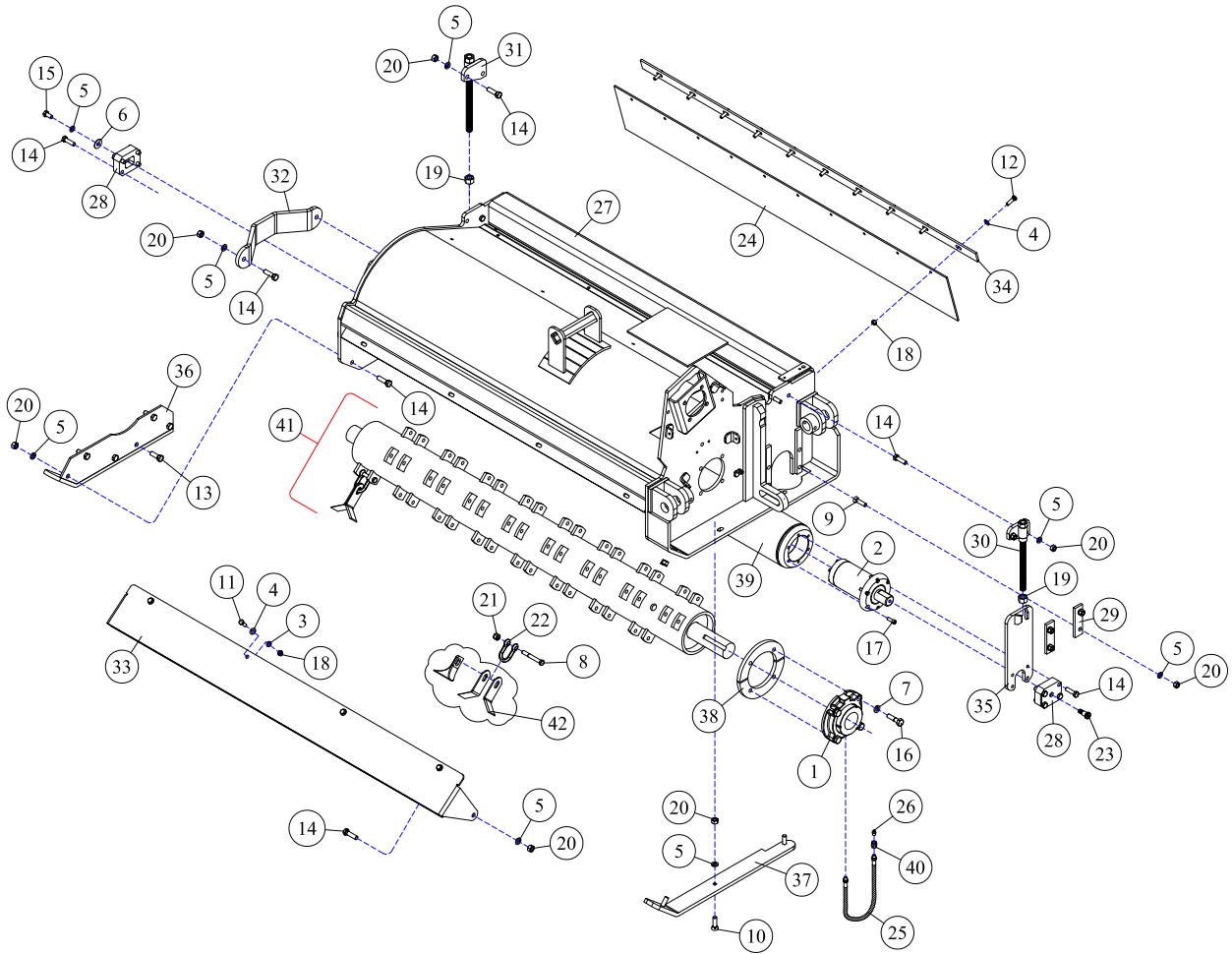
REF#	PARTS DESCRIPTION	REQ	PART #
1	3PT MAST MOUNTING BRACKET	1	10025-B
2	3PT ARM ASSEMBLY	1	10026-A
3	3PT SWIVEL PIN	1	10031
4	3-POINT LINK	1	10055
5	3/8 LOCK WASHER	1	11-0005
6	1 LOCK WASHER	6	11-0022
7	1 X 3 H.S. NC HEX CAPSCREW	6	11-0556
8	3/8 X 3-1/4 NC HEX CAPSCREW	1	11-0667
9	1 NC HEX NUT	6	11-1007
10	3/8 NYLOCK NUT	1	11-1024
11	7/32 X 2 ROLL PIN	8	11-2006
12	3 X 12 CYLINDER	2	14-0009

REF#	PARTS DESCRIPTION	REQ	PART #
13	1/2ADJ-OR X 1/2FP-90DEG, FITTING	2	21-1119
14	1/2MP X 1/2FPX-90DEG, FITTING	1	21-1138
15	TEE 8FPX-8FPX-8FPX	1	21-1190
16	BREATHER	2	21-2116
17	1/2 MALE QUICK COUPLER	1	21-2119
18	HOSE 1/2 X 204 (1/2MP X 1/2MP)	1	21-2714
19	HOSE 1/2 X 16 (1/2MP X 1/2MP)	1	21-2736
20	HOSE 1/2 X 46 (1/2MP X 1/2MP)	1	21-2737
21	CLEVIS PIN, 1 X 3-1/2	4	27-0004
22	PIVOT ARM PIN	1	27-0011
23	LYNCH PIN, 7/16 X 2	1	27-1005

FLAIL HEADS



SIDE HD FLAIL HEAD - 60" CUTTER ASSEMBLY, RIGHT SIDE

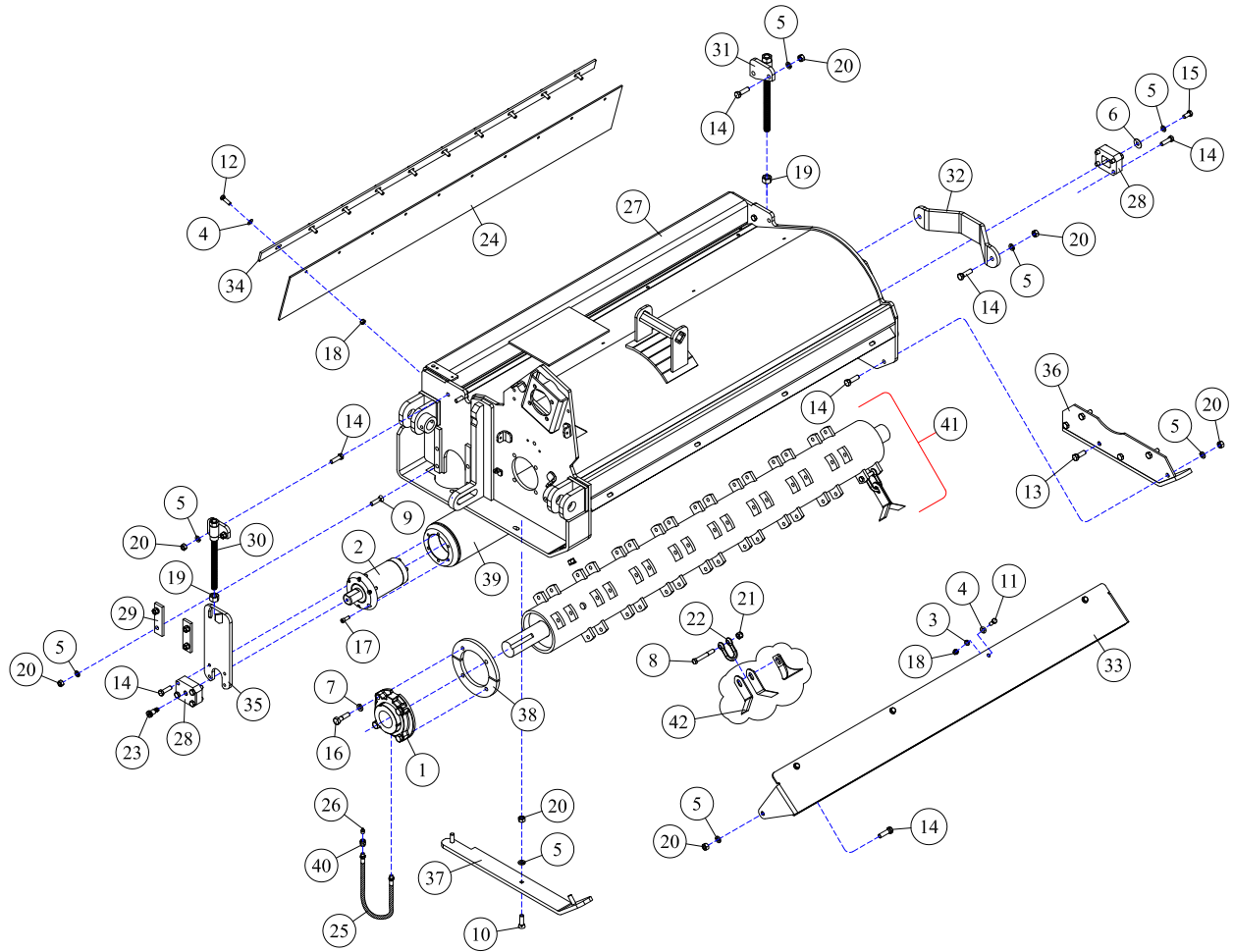


REF#	PARTS DESCRIPTION	REQ	PART #
1	CUTTERSHAFT BEARING	2	10-0006
2	GROUND ROLLER BEARING ASSY	2	10-1051
3	3/8 LOCK WASHER	4	11-0005
4	3/8 FLAT WASHER	14	11-0009
5	1/2 LOCK WASHER	25	11-0011
6	1/2 FLAT WASHER GR 5	1	11-0018
7	1/2 H.S. LOCK WASHER	8	11-0036
8	KNIFE MOUNTING BOLT	32	11-0506
9	1/2 X 2 NC PLOW BOLT	8	11-0515
10	1/2 X 1-3/4 NC PLOW BOLT	3	11-0530
11	3/8 X 1 NC HEX CAPSCREW	4	11-0532
12	3/8 X 1-1/4 NC HEX CAPSCREW	10	11-0533
13	1/2 X 1-1/2 NC HEX CAPSCREW	5	11-0534
14	1/2 X 1-3/4 NC HEX CAPSCREW	16	11-0535
15	1/2 X 1 NC HEX CAP	1	11-0569
16	1/2 X 2 H.S. NF HEX CAPSCREW	8	11-0633
17	3/8 X 1 H.S. NC SKT HEAD	12	11-0752
18	3/8 NC HEX NUT	14	11-1001
19	3/4 - 6 ACME HEX NUT	2	11-1012
20	1/2 NC HEX NUT	24	11-1016
21	7/16 NYLOCK JAM NUT	32	11-1146
22	CLEVIS	32	11-1501
23	SHOULDER BOLT	1	11-2086
24	60" FLAP	1	18-0026
25	GREASE ZERK HOSE	1	21-0002
26	1/8" GREASE ZERK	2	23-0003
27	60" RIGHT FLAIL BONNET	1	25-0041
28	GROUND ROLLER BLOCK	2	31-0563

REF#	PARTS DESCRIPTION	REQ	PART #
29	LOCK PLATE	4	41-0003
30	ADJUSTMENT ROD INSIDE	1	41-0005
31	ADJUSTMENT ROD OUSIDE	1	41-0006
32	CUTTERSHAFT GUARD	1	41-0097
33	60" TRASH GUARD	1	41-0193
34	60" FLAP BAR	1	41-0194
35	GROUND ROLLER BRACKET	2	41-1501
36	OUTER SKID SHOE	1	42-0010
37	INNER SKID SHOE	1	42-0013
38	BEARING GUARD	4	46-0018
39	60" GROUND ROLLER	1	46-0050
40	1/8" BRASS COUPLER	1	9996
41	****CUTTER SHAFTS COMPLETE****		
	60" CUTTER SHAFT, SMOOTH CUT KNIVES	Opt.	46-1012
	60" CUTTER SHAFT, 3/16" HD KNIVES	1	46-1022
42	****FLAIL KNIVES****		
	SMOOTH CUT FLAIL KNIFE	32	22-1006
	3/6" HD FLAIL KNIFE	64	22-1016
43	BLADE KITS		
	SIDE FLAIL ONLY		
	Includes 11-0506, 11-1146, & 22-1006 (smooth)	1	44-0262
	Includes 11-0506, 11-1146, & 22-1016 (HD)	1	44-0241
	TRIPLE FLAIL (60" sides, 102" rear)		
	Includes 11-0506, 11-1146, & 22-1006 (smooth)	1	44-0266
	Includes 11-0506, 11-1146, & 22-1016 (HD)	1	44-0248

Asy: 60" right flail, cutter assembly

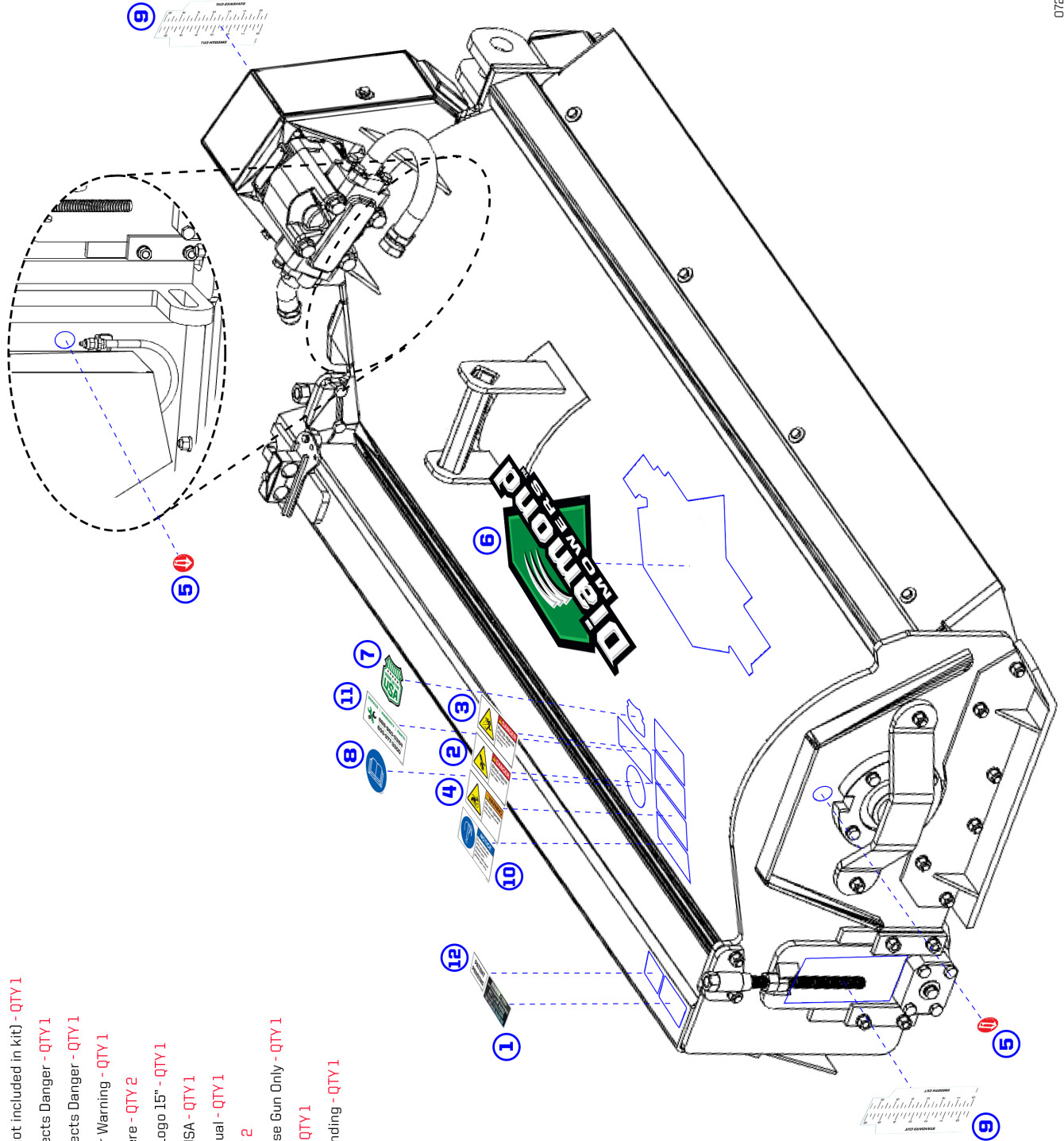
SIDE HD FLAIL HEAD - 60" CUTTER ASSEMBLY, LEFT SIDE



REF#	PARTS DESCRIPTION	REQ	PART #
1	CUTTERSHAFT BEARING	2	10-0006
2	GROUND ROLLER BEARING ASSY	2	10-1051
3	3/8 LOCK WASHER	4	11-0005
4	3/8 FLAT WASHER	14	11-0009
5	1/2 LOCK WASHER	25	11-0011
6	1/2 FLAT WASHER GR 5	1	11-0018
7	1/2 H.S. LOCK WASHER	8	11-0036
8	KNIFE MOUNTING BOLT	32	11-0506
9	1/2 X 2 NC PLOW BOLT	8	11-0515
10	1/2 X 1-3/4 NC PLOW BOLT	3	11-0530
11	3/8 X 1 NC HEX CAPSCREW	4	11-0532
12	3/8 X 1-1/4 NC HEX CAPSCREW	10	11-0533
13	1/2 X 1-1/2 NC HEX CAPSCREW	5	11-0534
14	1/2 X 1-3/4 NC HEX CAPSCREW	16	11-0535
15	1/2 X 1 NC HEX CAP	1	11-0569
16	1/2 X 2 H.S. NF HEX CAPSCREW	8	11-0633
17	3/8 X 1 H.S. NC SKT HEAD	12	11-0752
18	3/8 NC HEX NUT	14	11-1001
19	3/4 - 6 ACME HEX NUT	2	11-1012
20	1/2 NC HEX NUT	24	11-1016
21	7/16 NYLOCK JAM NUT	32	11-1146
22	CLEVIS	32	11-1501
23	SHOULDER BOLT	1	11-2086
24	60" FLAP	1	18-0026
25	GREASE ZERK HOSE	1	21-0002
26	1/8" GREASE ZERK	2	23-0003
27	60" LEFT FLAIL BONNET	1	25-0042
28	GROUND ROLLER BLOCK	2	31-0563

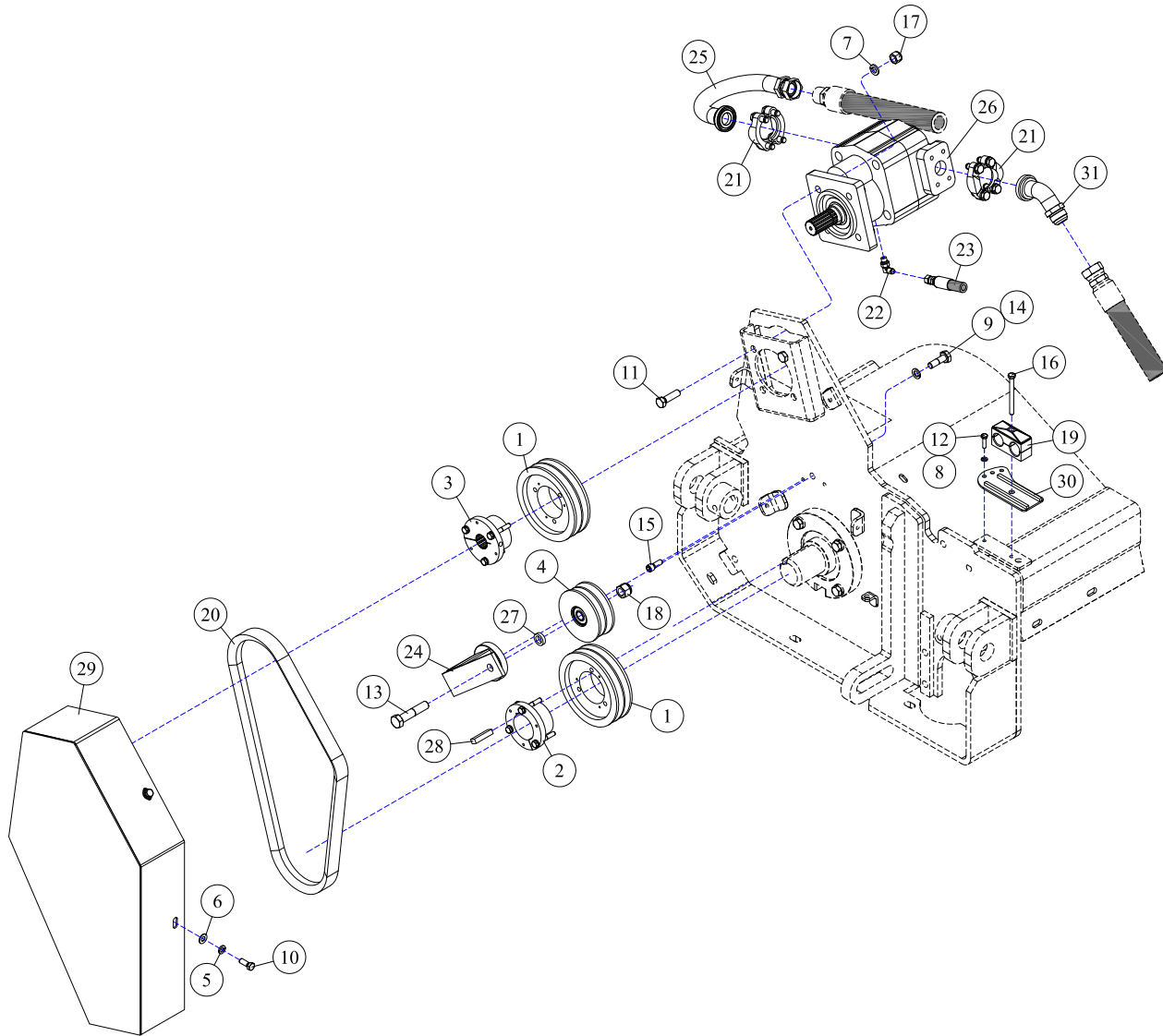
REF#	PARTS DESCRIPTION	REQ	PART #
29	LOCK PLATE	4	41-0003
30	ADJUSTMENT ROD INSIDE	1	41-0005
31	ADJUSTMENT ROD OUSIDE	1	41-0006
32	CUTTERSHAFT GUARD	1	41-0097
33	60" TRASH GUARD	1	41-0193
34	60" FLAP BAR	1	41-0194
35	GROUND ROLLER BRACKET	2	41-1501
36	OUTER SKID SHOE	1	42-0018
37	INNER SKID SHOE	1	42-0019
38	BEARING GUARD	4	46-0018
39	60" GROUND ROLLER	1	46-0050
40	1/8" BRASS COUPLER	1	9996
41	****CUTTER SHAFTS COMPLETE****		
	60" CUTTER SHAFT, SMOOTH CUT KNIVES	Opt.	46-1012
	60" CUTTER SHAFT, 3/16" HD KNIVES	1	46-1022
42	****FLAIL KNIVES****		
	SMOOTH CUT FLAIL KNIFE	32	22-1006
	3/6" HD FLAIL KNIFE	64	22-1016
43	BLADE KITS		
	SIDE FLAIL ONLY		
	Includes 11-0506, 11-1146, & 22-1006 (smooth)	1	44-0262
	Includes 11-0506, 11-1146, & 22-1016 (HD)	1	44-0241
	TRIPLE FLAIL (60" sides, 102" rear)		
	Includes 11-0506, 11-1146, & 22-1006 (smooth)	1	44-0266
	Includes 11-0506, 11-1146, & 22-1016 (HD)	1	44-0248

DECAL IDENTIFICATION - SIDE FLAIL



- 1 SERIAL NUMBER LABEL - (not included in kit) - QTY 1
- 2 PART #15-0001 - Sharp Objects Danger - QTY 1
- 3 PART #15-0002 - Flying Objects Danger - QTY 1
- 4 PART #15-0003 - Belt Cover Warning - QTY 1
- 5 PART #15-0005 - Grease Here - QTY 2
- 6 PART #15-0054 - Diamond Logo 15" - QTY 1
- 7 PART #15-0055 - Made In USA - QTY 1
- 8 PART #15-0058 - Read Manual - QTY 1
- 9 PART #15-1001 - Ruler - QTY 2
- 10 PART #15-1003 - Hand Grease Gun Only - QTY 1
- 11 PART #15-1016 - Warranty - QTY 1
- 12 PART #15-0067 - Patent Pending - QTY 1

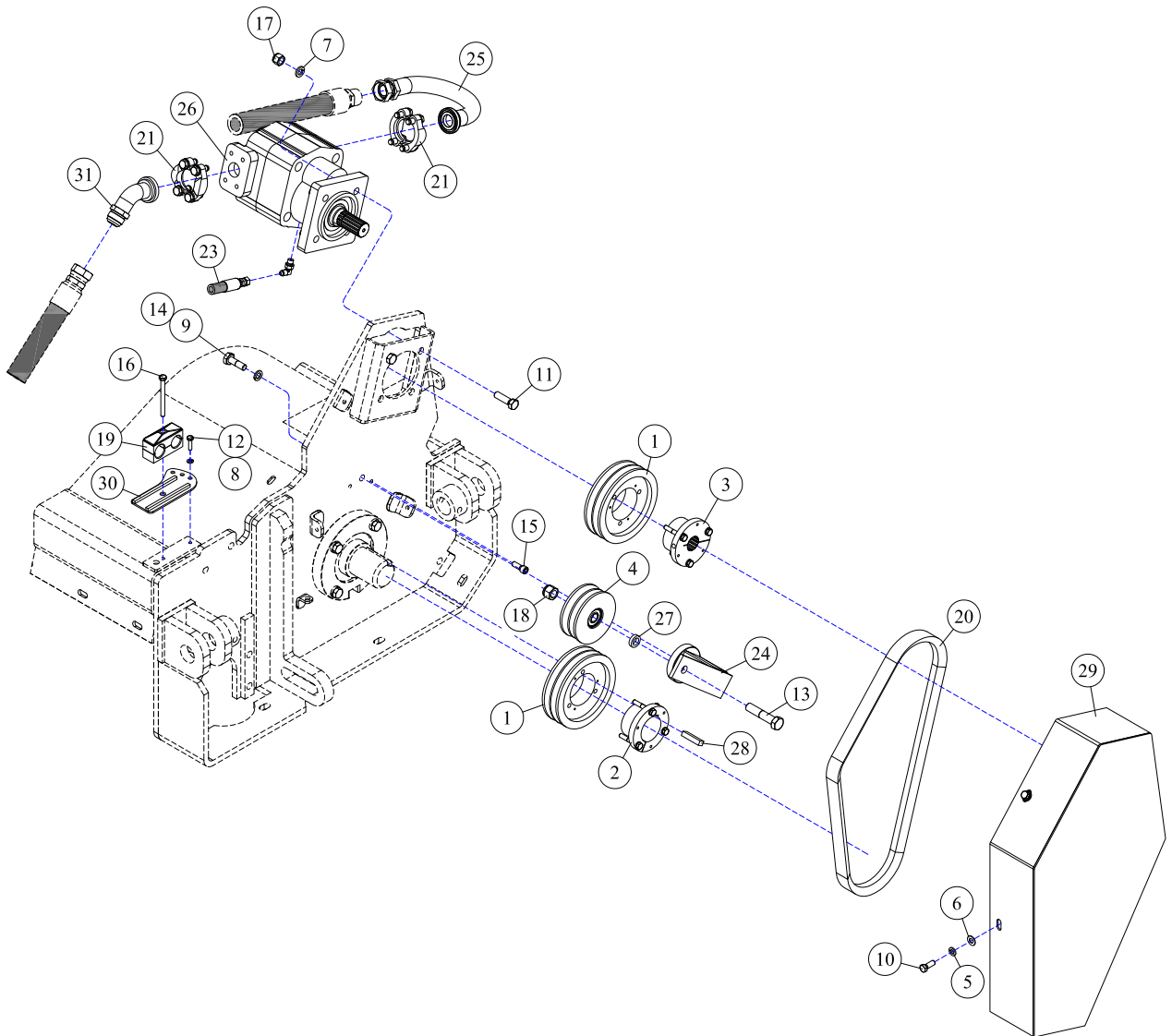
SIDE HD FLAIL HEAD - 60" DRIVE ASSEMBLY, RIGHT



REF#	PARTS DESCRIPTION	REQ	PART #
1	PULLEY, 6.3"	2	10-1007
2	TAPERLOCK, 2-3/16"	1	10-1012
3	1-1/4" TAPERLOCK BUSHING	1	10-1010
4	IDLER PULLEY, 4.4"	1	10-1016
5	3/8 LOCK WASHER	4	11-0005
6	3/8 FLAT WASHER	4	11-0009
7	1/2 LOCK WASHER	4	11-0011
8	1/4 LOCK WASHER	1	11-0020
9	12 MM LOCK WASHER	1	11-0031
10	3/8 X 1 NC HEX CAPSCREW	4	11-0532
11	1/2 X 1-3/4 NC HEX CAPSCREW	4	11-0535
12	1/4 X 1 NC HEX CAP	1	11-0550
13	5/8 X 3 NC HEX CAPSCREW	1	11-0558
14	12 MM X 40 MM - 1.75 HEX CAPSCREW	1	11-0672
15	3/8 X 1 H.S. NC SOCKET HEAD CAPSCREW	1	11-0752
16	5/16 X 3-1/2 NC HEX CAPSCREW	1	11-0782

REF#	PARTS DESCRIPTION	REQ	PART #
17	1/2 NC NYLOCK NUT	4	11-1018
18	5/8 NC NYLOCK NUT	1	11-1025
19	1" DOUBLE HOSE CLAMP	1	11-2008
20	DRIVE BELT	1	12-0007
21	#20 FLANGE KIT	2	21-2105
22	1/4MORB-90DEG X 1/4MJIC, ADAPTER	1	21-1264
23	HOSE 3/8 X 135 (1/2MORB-90DEG X 1/4FJIC)	1	21-4347
24	ROSTA TENSIONER	1	24-0081
25	TUBE	1	28-0014
26	MOTOR	1	30-0513
27	SPACER	1	34-0033
28	CUTTERSHAFT KEY	1	37-0021
29	BELT SHIELD	1	41-0430
30	FLAIL HOSE CLAMP	1	41-0643
31	#20FLG X 1MJIC-45DEG	1	21-1268

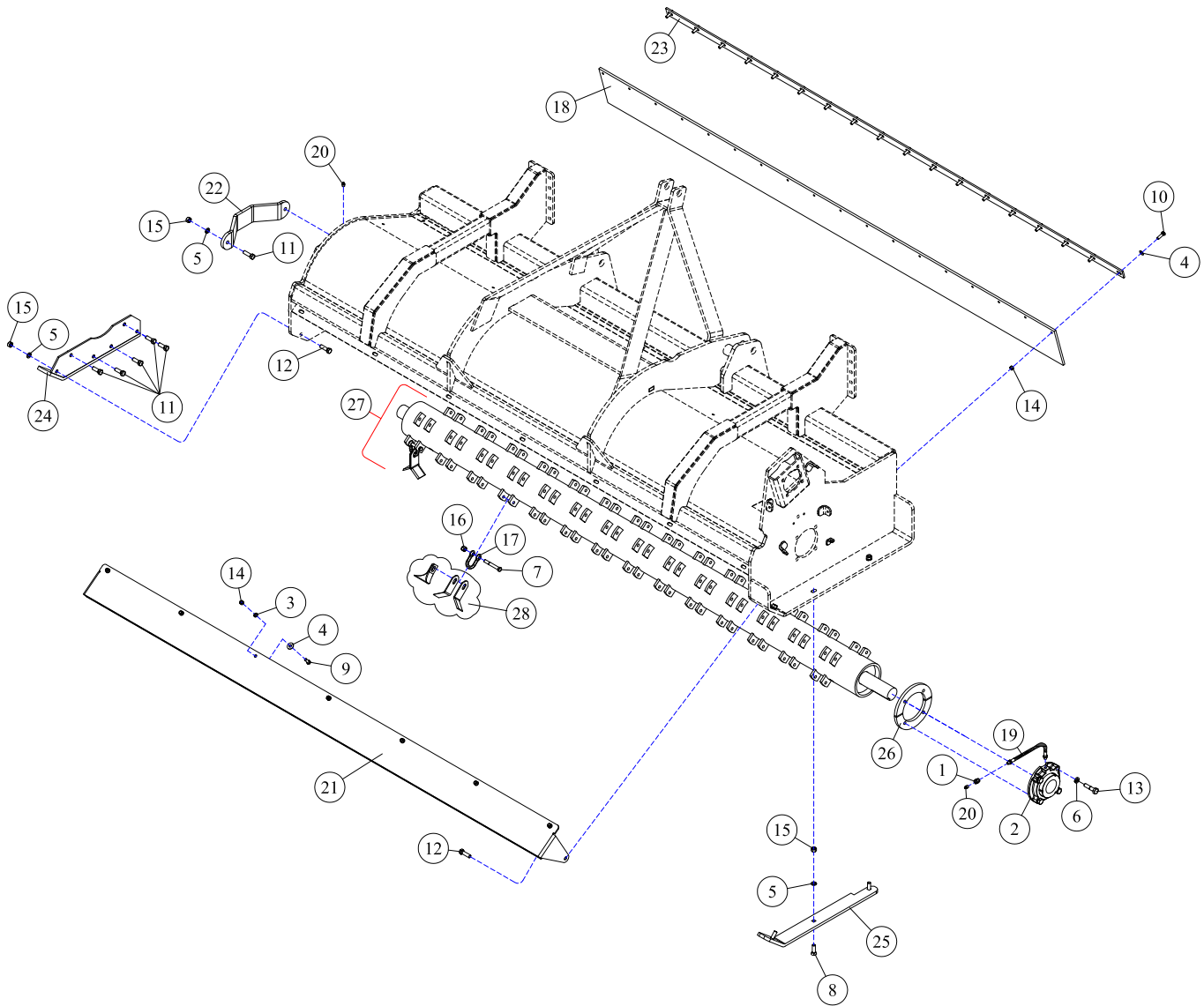
SIDE HD FLAIL HEAD - 60" DRIVE ASSEMBLY, LEFT



REF#	PARTS DESCRIPTION	REQ	PART #
1	PULLEY, 6.3"	2	10-1007
2	TAPERLOCK, 2-3/16"	1	10-1012
3	1-1/4" TAPERLOCK BUSHING	1	10-1010
4	IDLER PULLEY, 4.4"	1	10-1016
5	3/8 LOCK WASHER	4	11-0005
6	3/8 FLAT WASHER	4	11-0009
7	1/2 LOCK WASHER	4	11-0011
8	1/4 LOCK WASHER	1	11-0020
9	12 MM LOCK WASHER	1	11-0031
10	3/8 X 1 NC HEX CAPSCREW	4	11-0532
11	1/2 X 1-3/4 NC HEX CAPSCREW	4	11-0535
12	1/4 X 1 NC HEX CAP	1	11-0550
13	5/8 X 3 NC HEX CAPSCREW	1	11-0558
14	12 MM X 40 MM - 1.75 HEX CAPSCREW	1	11-0672
15	3/8 X 1 H.S. NC SOCKET HEAD CAPSCREW	1	11-0752
16	5/16 X 3-1/2 NC HEX CAPSCREW	1	11-0782

REF#	PARTS DESCRIPTION	REQ	PART #
17	1/2 NC NYLOCK NUT	4	11-1018
18	5/8 NC NYLOCK NUT	1	11-1025
19	1" DOUBLE HOSE CLAMP	1	11-2008
20	DRIVE BELT	1	12-0007
21	#20 FLANGE KIT	2	21-2105
22	1/4MORB-90DEG X 1/4MJIC, ADAPTER	1	21-1264
23	HOSE 3/8 X 135 (1/2MORB-90DEG X 1/4FJIC)	1	21-4347
24	ROSTA TENSIONER	1	24-0081
25	TUBE	1	28-0014
26	MOTOR	1	30-0513
27	SPACER	1	34-0033
28	CUTTERSHAFT KEY	1	37-0021
29	BELT SHIELD	1	41-0430
30	FLAIL HOSE CLAMP (INVERSE)	1	41-0644
31	#20FLG X 1MJIC-45DEG	1	21-1268

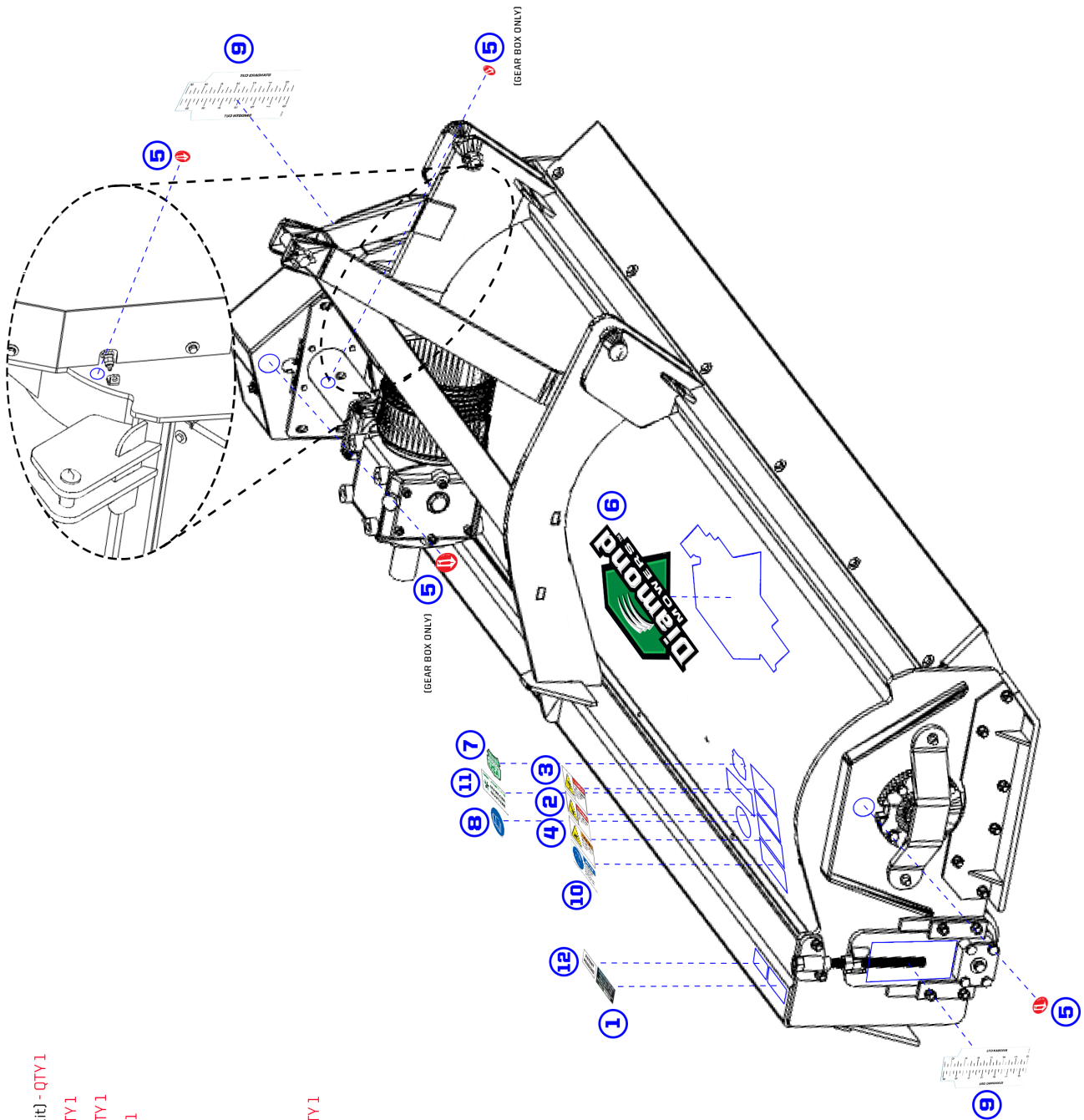
FRONT HD FLAIL HEAD - 102" CUTTER ASSEMBLY



REF#	PARTS DESCRIPTION	REQ	PART #
1	1/8" BRASS COUPLER	1	9996
2	CUTTERSHAFT BEARING	2	10-0006
3	3/8 LOCK WASHER	7	11-0005
4	3/8 FLAT WASHER	25	11-0009
5	1/2 LOCK WASHER	11	11-0011
6	1/2 H.S. LOCK WASHER	8	11-0036
7	KNIFE MOUNTING BOLT	54	11-0506
8	1/2 X 1-3/4 PLOW BOLT	3	11-0530
9	3/8 X 1 NC CAPSCREW	7	11-0532
10	3/8 X 1-1/4 NC CAPSCREW	18	11-0533
11	1/2 X 1-1/2 NC CAPSCREW	7	11-0534
12	1/2 X 1-3/4 NC CAPSCREW	2	11-0535
13	1/2 X 2 H.S. NF CAPSCREW	8	11-0633
14	3/8 NC HEX NUT	25	11-1001
15	1/2 NC HEX NUT	11	11-1016
16	7/16 NYLOCK JAM NUT	54	11-1146
17	CLEVIS	54	11-1501

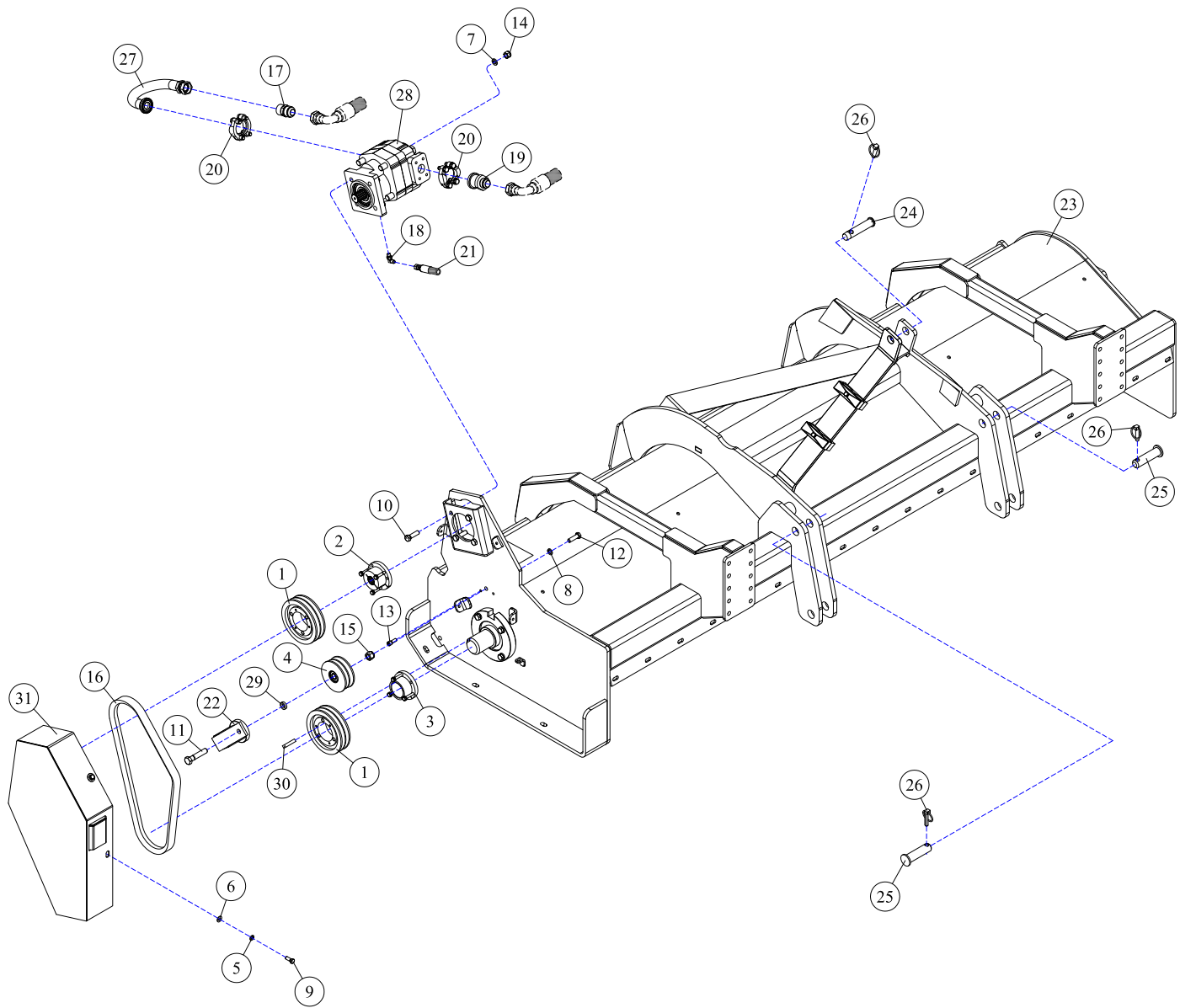
REF#	PARTS DESCRIPTION	REQ	PART #
18	102" FLAP	1	18-0012
19	GREASE ZERK HOSE	1	21-0002
20	1/8" GREASE ZERK	2	23-0003
21	102" TRASH GUARD	1	41-0031
22	CUTTERSHAFT GUARD	1	41-0097
23	102" FLAP BAR	1	41-0127
24	OUTER SKID SHOE	1	42-0010
25	INNER SKID SHOE	1	42-0013
26	BEARING GUARD	4	46-0018
27	****CUTTER SHAFTS COMPLETE****		
	102" CUTTER SHAFT, SMOOTH CUT KNIVES	Opt.	46-1014
	102" CUTTER SHAFT, 3/16" STD KNIVES	1	46-1016
28	****FLAIL KNIVES****		
	SMOOTH CUT FLAIL KNIFE	Avail.	22-1006
	3/16" HD FLAIL KNIFE	Avail.	22-1016

DECAL IDENTIFICATION - REAR/FRONT FLAIL



- 1 SERIAL NUMBER LABEL - (not included in kit) - QTY 1
- 2 PART #15-0001 - Sharp Objects Danger - QTY 1
- 3 PART #15-0002 - Flying Objects Danger - QTY 1
- 4 PART #15-0003 - Belt Cover Warning - QTY 1
- 5 PART #15-0005 - Grease Here - QTY 4
- 6 PART #15-0054 - Diamond Logo 15" - QTY 1
- 7 PART #15-0055 - Made In USA - QTY 1
- 8 PART #15-0058 - Read Manual - QTY 1
- 9 PART #15-1001 - Ruler - QTY 2
- 10 PART #15-1003 - Hand Grease Gun Only - QTY 1
- 11 PART #15-1016 - Warranty - QTY 1
- 12 PART #15-0067 - Patent Pending - QTY 1

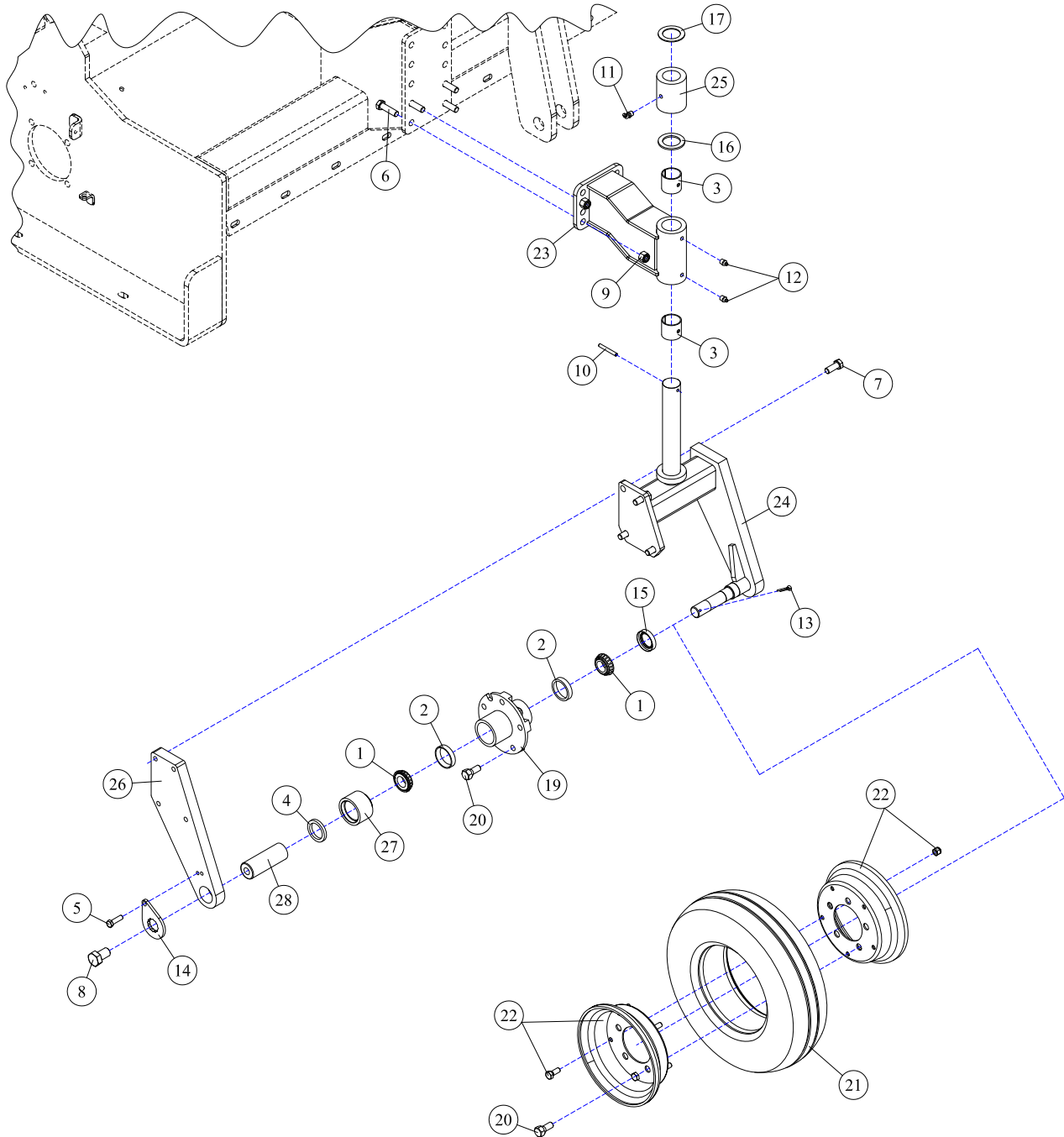
FRONT HD FLAIL HEAD - 102" DRIVE ASSEMBLY



REF#	PARTS DESCRIPTION	REQ	PART #
1	PULLEY, 6.3"	2	10-1007
2	1-1/4" TAPERLOCK BUSHING	1	10-1010
3	TAPERLOCK, 2-3/16"	1	10-1012
4	IDLER PULLEY, 4.4"	1	10-1016
5	3/8 LOCK WASHER	4	11-0005
6	3/8 FLAT WASHER	4	11-0009
7	1/2 LOCK WASHER	4	11-0011
8	12 MM LOCK WASHER	1	11-0031
9	3/8 X 1 NC HEX CAPSCREW	4	11-0532
10	1/2 X 1-3/4 NC HEX CAPSCREW	4	11-0535
11	5/8 X 3 NC HEX CAPSCREW	1	11-0558
12	12 MM X 40 MM - 1.75 HEX CAPSCREW	1	11-0672
13	3/8 X 1 H.S. NC SOCKET HEAD CAPSCREW	1	11-0752
14	1/2 NC NYLOCK NUT	4	11-1018
15	5/8 NC NYLOCK NUT	1	11-1025
16	DRIVE BELT	1	12-0007

REF#	PARTS DESCRIPTION	REQ	PART #
17	1MJ X 1MP, ADAPTER	1	21-1227
18	1/4MORB-90DEG X 1/4MJIC, ADAPTER	1	21-1264
19	#20FLG X 1MJIC, ADAPTOR	1	21-1279
20	#20 FLANGE KIT	2	21-2105
21	HOSE 3/8 X 110 (1/4FJIC X 1/2MP)	1	21-4249
22	ROSTA TENSIONER	1	24-0081
23	102" FRONT FLAIL	1	25-0180
24	PIN, TOP 3-POINT	1	27-0007
25	PIN, BOTTOM 3-POINT	2	27-0016
26	LYNCH PIN	3	27-1005
27	TUBE	1	28-0014
28	MOTOR	1	30-0513
29	SPACER	1	34-0033
30	CUTTERSHAFT KEY	1	37-0021
31	BELT SHIELD	1	41-0430

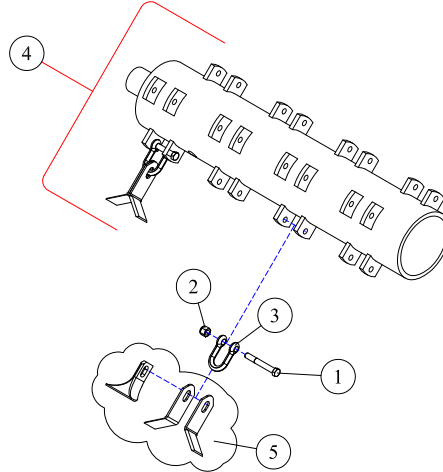
FRONT HD FLAIL HEAD - 102" CASTER ASSEMBLY



REF#	PARTS DESCRIPTION	REQ	PART #
1	CONE BEARING	2	10-0016
2	BEARING CUP	2	10-0017
3	GARLOCK BUSHING (Not available on all models)	2	10-0033
4	SEAL, 1.500 X 2.000 X 0.312	1	10-0092
5	3/8 X 1-1/4 NC HEX CAP	1	11-0533
6	1/2 X 1-3/4 NC HEX CAPSCREW	4	11-0535
7	1/2 X 1-1/4 NC HEX CAP	4	11-0570
8	3/4 X 1 NC HEX CAP	1	11-0985
9	1/2 NC NYLOCK NUT	4	11-1018
10	1/4 X 2 ROLL PIN	1	11-2005
11	1/8 GREASE ZERK X 45DEG	1	23-0002
12	1/8 GREASE ZERK	2	23-0003
13	3/16 X 2 COTTER PIN	1	27-1001
14	3/4 LOCK TAB	1	31-0517
15	HUB SEAL	1	33-0014

REF#	PARTS DESCRIPTION	REQ	PART #
16	10GA MACHINE BUSHING	1	34-0057
17	14GA MACHINE BUSHING	1	34-0058
*18	HUB ASSEMBLY COMPLETE	1	35-0002
19	HUB	1	35-0003
20	HUB STUD	5	35-0005
21	TIRE	1	38-0001
22	RIM COMPLETE (2 SECTIONS & HARDWARE)	1	38-0002
23	FLAIL CASTER FRAME	1	41-0923
24	CASTER ASSEMBLY, FRONT FLAIL	1	41-1439
25	ROUND TUBE	1	90-0036
26	CASTER SUPPORT ARM, FRONT FLAIL	1	90-6959
27	CASTER SEAL HOUSING	1	90-7037
28	CASTER AXLE EXTENSION	1	90-7038
* #18 Hub assembly complete includes #1, 2, 13, 15, 19, & 20			

HD FLAIL HEAD - BLADE CONFIGURATIONS

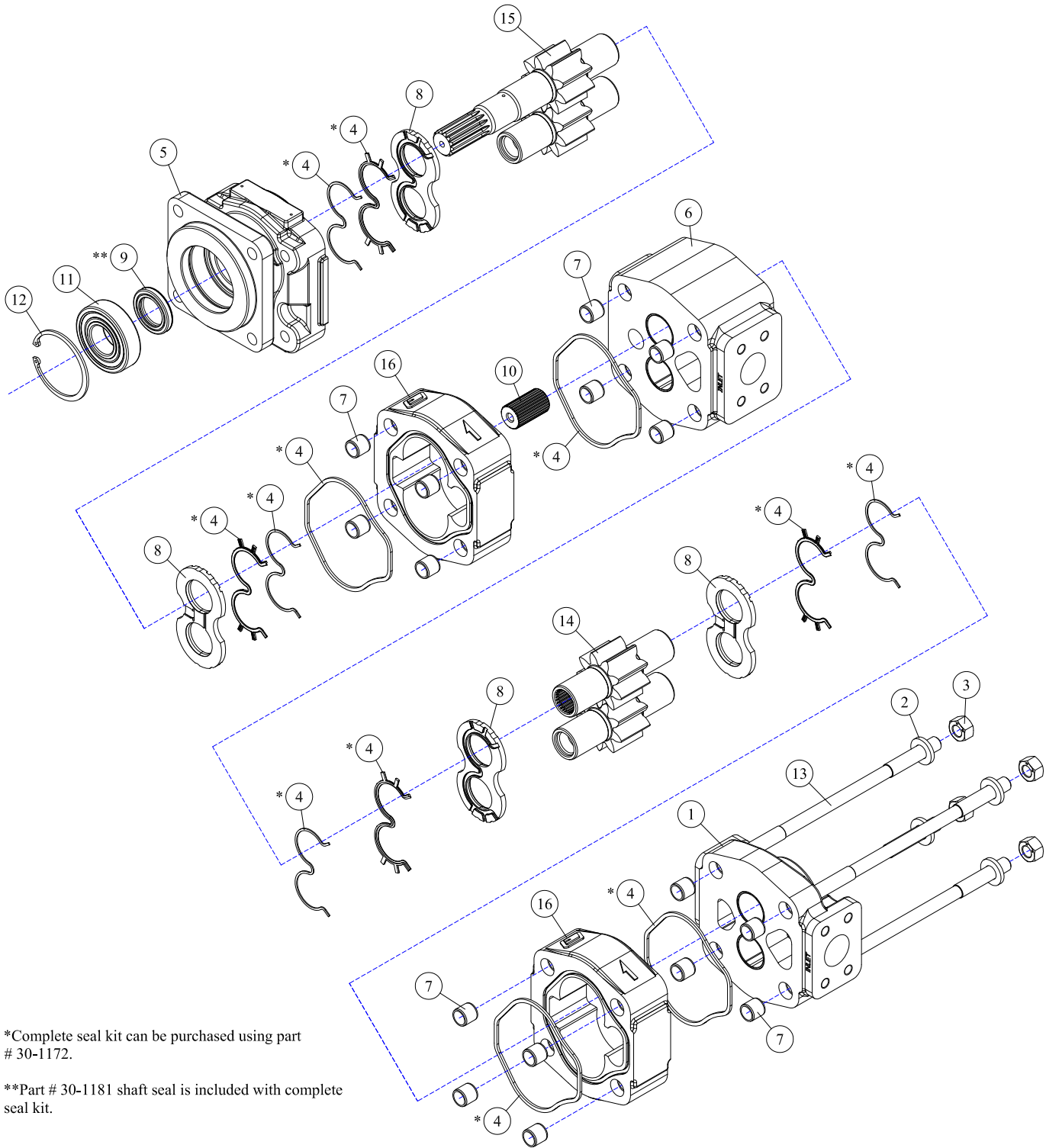


REF#	PARTS DESCRIPTION	REQ	PART #
<u>90" FLAIL</u>			
1	KNIFE MOUNTING BOLT	48	11-0506
2	7/16 NYLOCK JAM NUT	48	11-1146
3	CLEVIS	48	11-1501
4	****CUTTER SHAFTS COMPLETE****		
	90" CUTTER SHAFT, 1/8" STD KNIVES	Opt.	46-1000
	90" CUTTER SHAFT, SMOOTH CUT KNIVES	Opt.	46-1013
	90" CUTTER SHAFT, 3/16" STD KNIVES	1	46-1011
5	****FLAIL KNIVES****		
	1/8" STD FLAIL KNIFE	Avail.	22-1003
	SMOOTH CUT FLAIL KNIFE	Avail.	22-1006
	3/16" HD FLAIL KNIFE	Avail.	22-1016
<u>102" FLAIL</u>			
1	KNIFE MOUNTING BOLT	56	11-0506
2	7/16 NYLOCK JAM NUT	56	11-1146
3	CLEVIS	56	11-1501
4	****CUTTER SHAFTS COMPLETE****		
	102" CUTTER SHAFT, 1/8" STD KNIVES	Opt.	46-1007
	102" CUTTER SHAFT, SMOOTH CUT KNIVES	Opt.	46-1014
	102" CUTTER SHAFT, 3/16" STD KNIVES	1	46-1016
5	****FLAIL KNIVES****		
	1/8" STD FLAIL KNIFE	Avail.	22-1003
	SMOOTH CUT FLAIL KNIFE	Avail.	22-1006
	3/16" HD FLAIL KNIFE	Avail.	22-1016
<u>60" FLAIL</u>			
1	KNIFE MOUNTING BOLT	32	11-0506
2	7/16 NYLOCK JAM NUT	32	11-1146
3	CLEVIS	32	11-1501
4	****CUTTER SHAFTS COMPLETE****		
	60" CUTTER SHAFT, 1/8" STD KNIVES	Opt.	46-1008
	60" CUTTER SHAFT, SMOOTH CUT KNIVES	Opt.	46-1012
	60" CUTTER SHAFT, 3/16" HD KNIVES	1	46-1022
5	****FLAIL KNIVES****		
	1/8" STD FLAIL KNIFE	Avail.	22-1003
	SMOOTH CUT FLAIL KNIFE	Avail.	22-1006
	3/6" HD FLAIL KNIFE	Avail.	22-1016
<u>75" FLAIL</u>			
1	KNIFE MOUNTING BOLT	40	11-0506
2	7/16 NYLOCK JAM NUT	40	11-1146
3	CLEVIS	40	11-1501
4	****CUTTER SHAFTS COMPLETE****		
	75" CUTTER SHAFT, 1/8" STD KNIVES	Opt.	46-1005
	75" CUTTER SHAFT, SMOOTH CUT KNIVES	Opt.	46-1018
	75" CUTTER SHAFT, 3/16" HD KNIVES	1	46-1010
5	****FLAIL KNIVES****		
	1/8" STD FLAIL KNIFE	Avail.	22-1003
	SMOOTH CUT FLAIL KNIFE	Avail.	22-1006
	3/6" HD FLAIL KNIFE	Avail.	22-1016

DECK ASSEMBLIES



30-0004 - PUMP ASSEMBLY



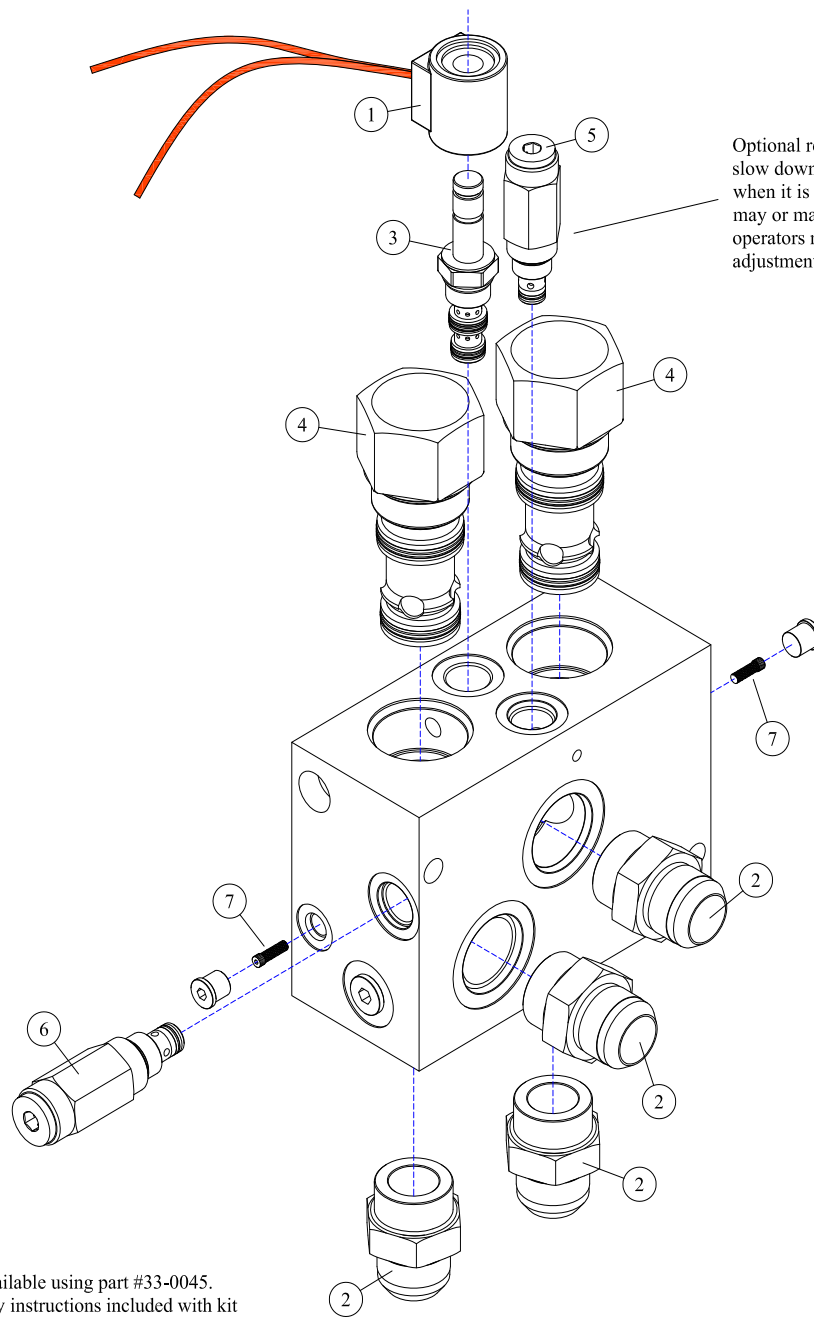
*Complete seal kit can be purchased using part # 30-1172.

**Part # 30-1181 shaft seal is included with complete seal kit.

REF#	PARTS DESCRIPTION	REQ	PART #
1	PORT END COVER HOUSING	1	30-1083
2	WASHER	4	30-1127
3	HEX NUT	4	30-1128
4	*SEAL KIT	1	30-1172
5	SHAFT END COVER HOUSING	1	30-1174
6	BEARING CARRIER HOUSING	1	30-1175
7	DOWEL PIN	16	30-1179
8	THRUST PLATE	4	30-1180

REF#	PARTS DESCRIPTION	REQ	PART #
9	**SHAFT SEAL	1	30-1181
10	CONNECTOR SHAFT	1	30-1176
11	BALL BEARING	1	30-1173
12	SNAP RING	1	30-1009
13	STUD	4	30-1254
14	GEAR SET	1	30-1255
15	GEAR SHAFT SET	1	30-1256
16	GEAR HOUSING	2	30-1257

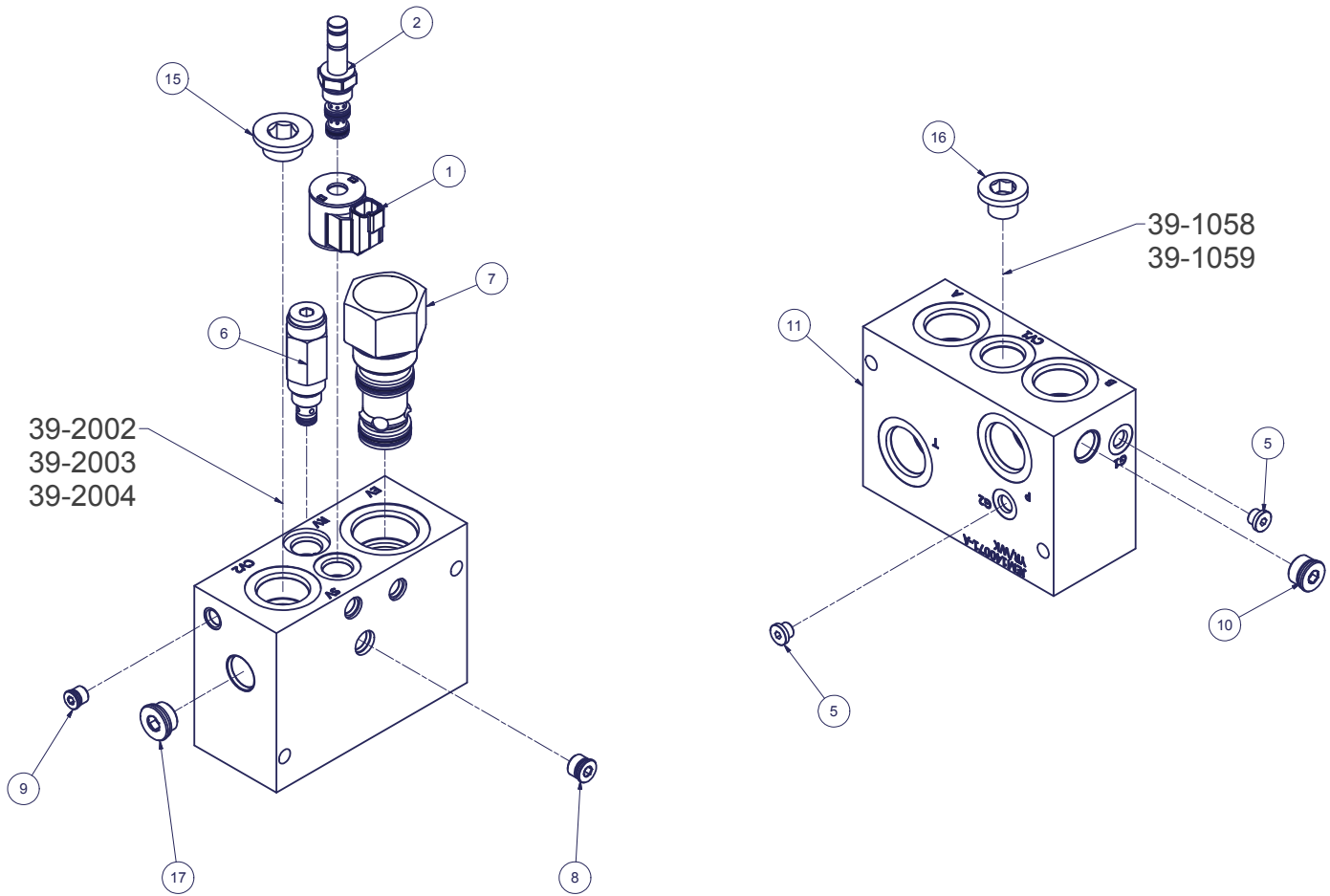
21-2144 - VALVE ASSEMBLY



Valve seal kit available using part #33-0045.
 Refer to assembly instructions included with kit
 for correct placement and torque specifications.
 Kit includes seals for items 3-6 only.

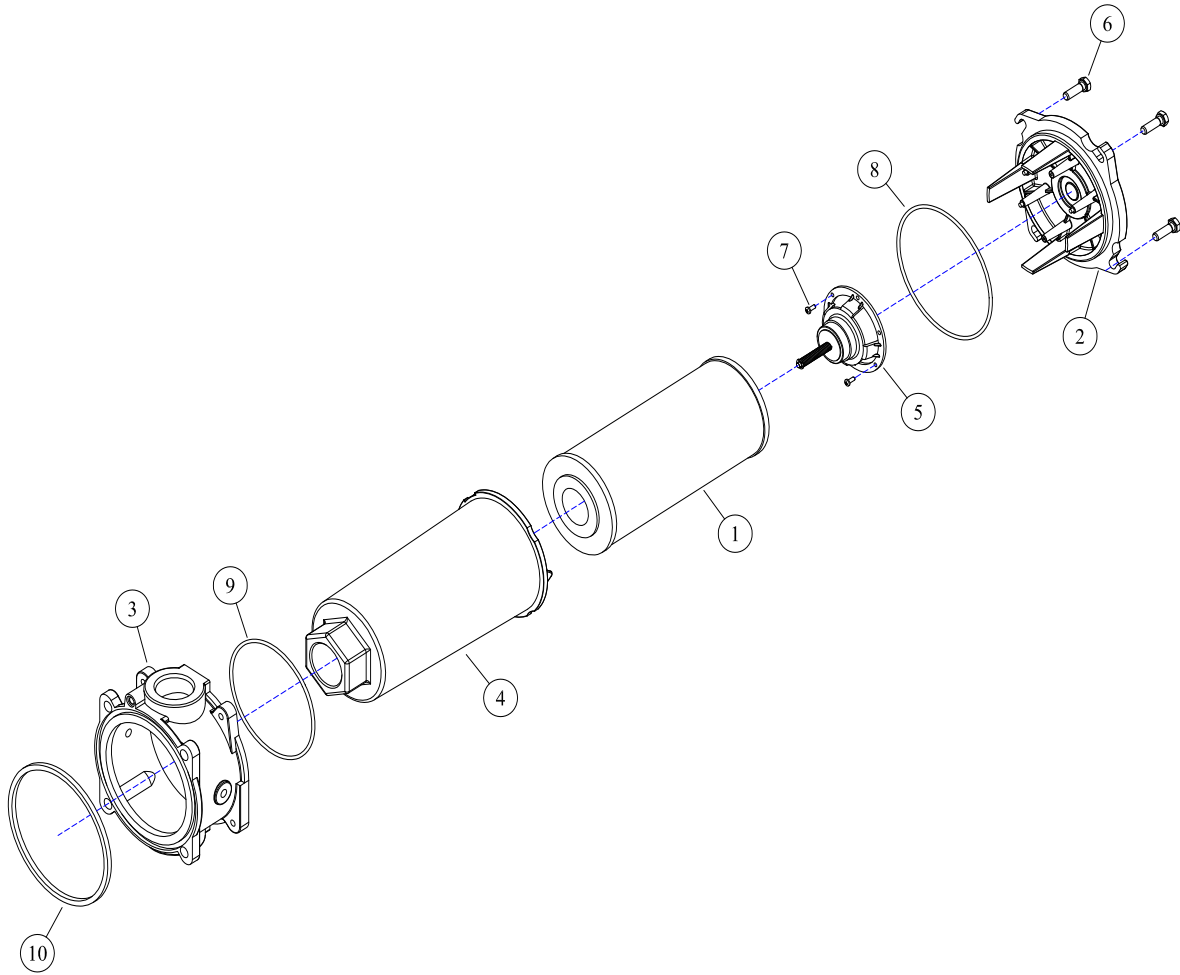
REF#	PARTS DESCRIPTION	REQ	PART #
1	SOLENOID COIL	1	39-0566
2	IM-OR X IMJIC ADAPTER	4	21-1005
3	SOLENOID VALVE	1	39-0565
4	HYDRAULIC CARTRIDGE	2	39-0561
5	RELIEF VALVE 35/18	1	39-1023
6	RELIEF VALVE 35/32.5	1	39-1024
7	FILTER	2	39-0636

39-0106 - VALVE ASSEMBLY



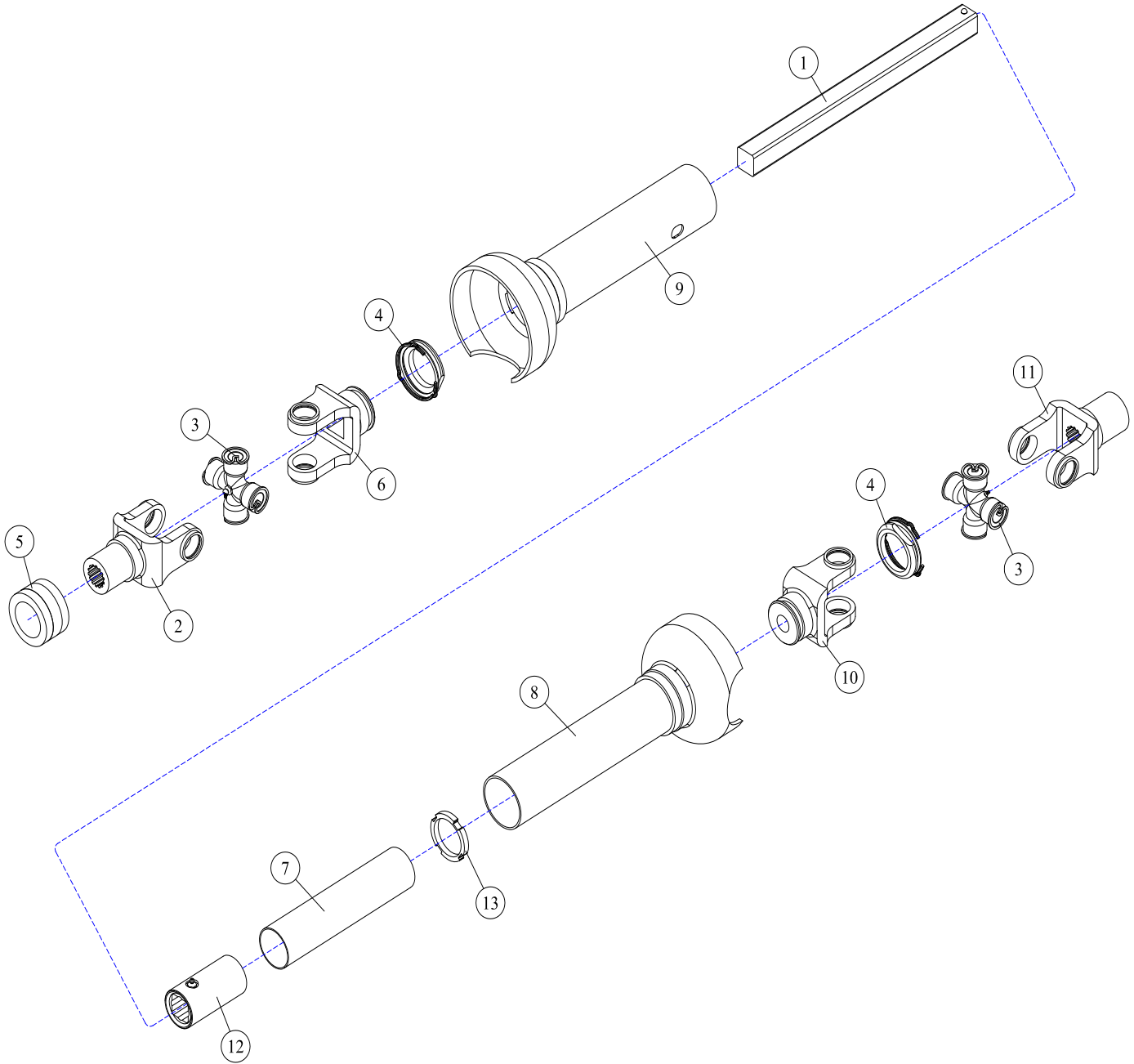
REF#	PARTS DESCRIPTION	REQ	PART#	TORQUE (ft-lbs)	TORQUE (Nm)
1	12 VDC, -08 SIZE E-COIL, DEUTSCH, JEMTECH PROPORTIONAL	1	16-0186	5.0	6.8
2	SPOOL-TYPE, 2-WAY, N.O.	1	16-0190	20.0	27.1
3	POPPET (NOT SHOWN)	1	39-1058		
4	POPPET RETAINER (NOT SHOWN)	1	39-1059		
5	SOCKET PLUG, SAE-04 ORB	2	39-1060	20.0	27.1
6	RELIEF VALVE	1	39-1062	20.0	27.1
7	LOGIC VALVE	1	39-1063	75.0	101.7
8	ZERO-LEAK PLUG, SAE-06, JEMTECH PROPORTIONAL	1	39-1082	25.0	33.9
9	ZERO-LEAK PLUG, SAE-04, JEMTECH PROPORTIONAL	1	39-1083	20.0	27.1
10	ZERO-LEAK PLUG, SAE-08, JEMTECH PROPORTIONAL	1	39-1084	50.0	67.8
11	JEM MANIFOLD BLOCK	1	39-2001		
12	CHECK VALVE STOP (NOT SHOWN)	1	39-2002		
13	COMPRESSION SPRING (NOT SHOWN)	1	39-2003		
14	POPPET (NOT SHOWN)	1	39-2004		
15	SOCKET PLUG, SAE-16 ORB	1	39-2005	75.0	101.7
16	SOCKET PLUG, SAE-12 ORB	1	39-2006	75.0	101.7
17	ZERO-LEAK PLUG, SAE-10, JEMTECH PROPORTIONAL	1	39-2007	75.0	101.7

17-0014 - FILTER ASSEMBLY



REF#	PARTS DESCRIPTION	REQ	PART #
1	FILTER ELEMENT	1	17-0001
2	COVER	1	17-0016
3	PORT CASTING	1	17-0017
4	ELEMENT HOUSING	1	17-0018
5	BY-PASS ASSEMBLY	1	17-0019
6	SCREW (COVER)	4	17-0020
7	SCREW (BY-PASS ASSEMBLY)	2	17-0021
8	O-RING, COVER/PORT CASTING	1	33-0005
9	O-RING, ELEMENT/PORT CASTING	1	33-0053
10	TETRA SEAL	1	33-0018

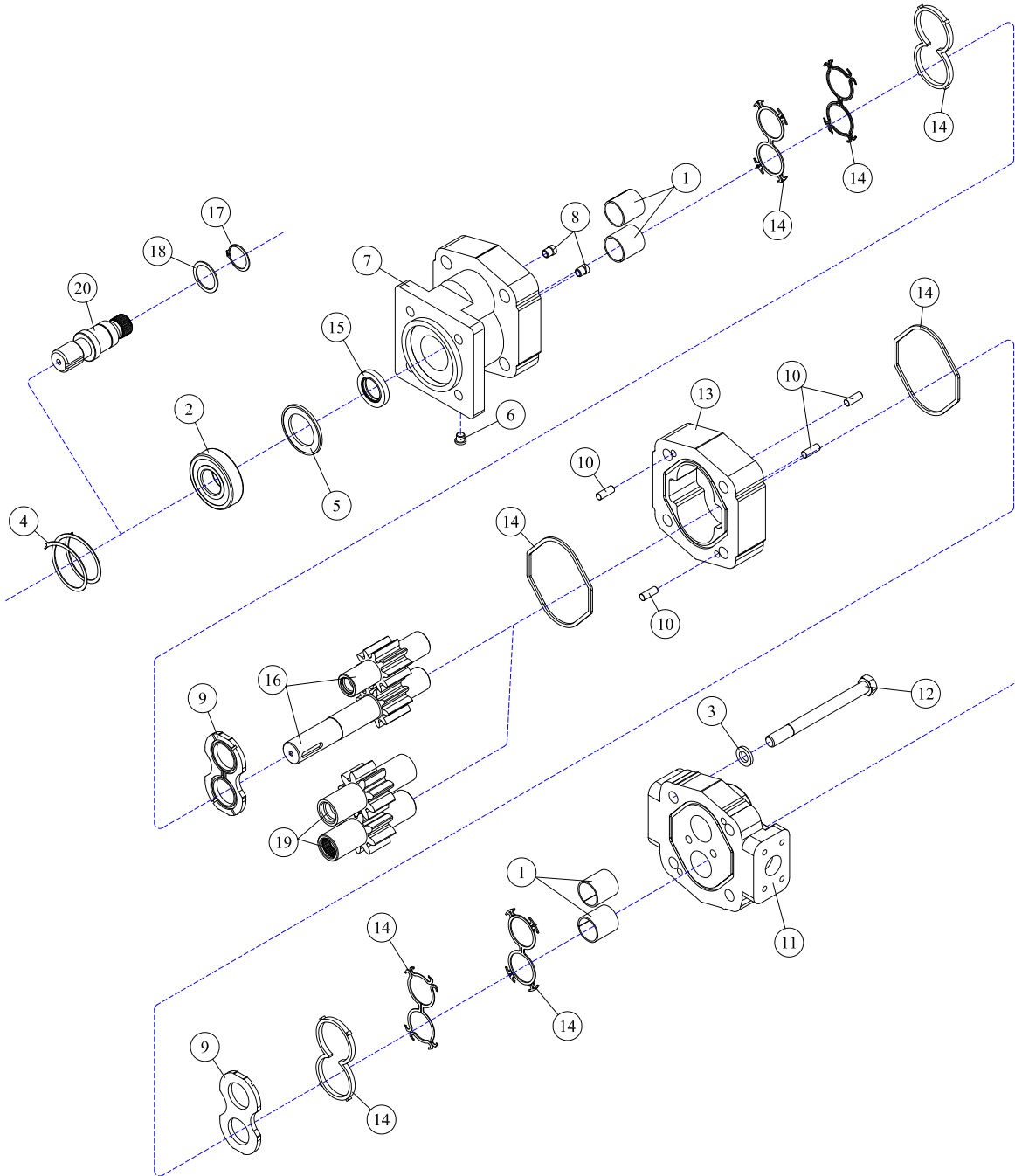
29-0015 - DRIVE LINE ASSEMBLY



REF#	PARTS DESCRIPTION	REQ	PART #
1	SQUARE SHAFT	1	29-0017
2	TRACTOR YOKE	1	29-0043
3	CROSS & BEARING KIT	2	29-0060
4	PTO GUARD BEARING KIT	2	29-0056
5	KNURLED COLLAR KIT	1	29-0168
6	BAR WELD YOKE	1	29-0169
7	TORQUE TUBING	1	29-0170

REF#	PARTS DESCRIPTION	REQ	PART #
8	INNER PLASTIC SHIELD	1	29-0171
9	OUTER PLASTIC SHIELD	1	29-0172
10	TORQUE TUBE WELD YOKE	1	29-0174
11	IMPLEMENT YOKE	1	29-0175
12	SQUARE SLIP SLEEVE	1	29-0176
13	SPACER/BEARING	1	29-0177
14	PTO SHAFT COMPLETE	Avail	29-0015

30-0509 - MOTOR ASSEMBLY

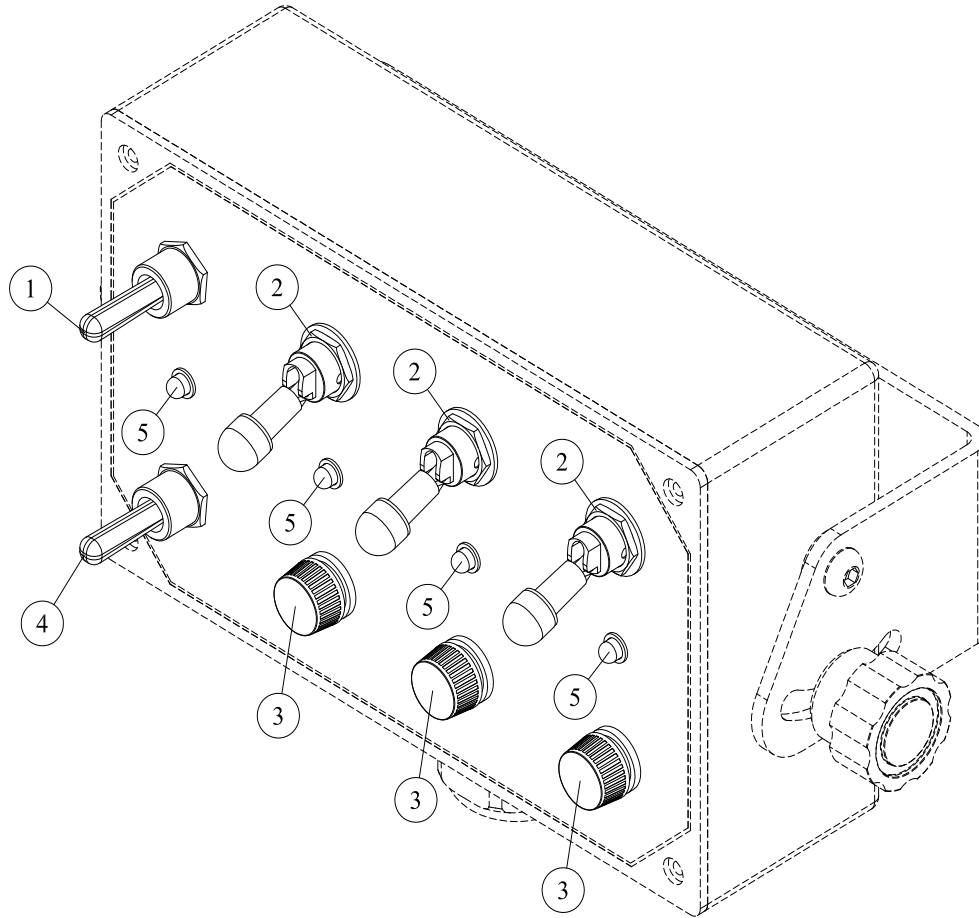


REF#	PARTS DESCRIPTION	REQ	PART #
1	BUSHING	4	30-1002
2	BALL BEARING	1	30-1044
3	WASHER	4	30-1071
4	SPIROLOCK	1	30-1094
5	RETAINING RING	1	30-1095
6	PLUG	1	30-1096
7	SHAFT END COVER	1	30-1097
8	CHECK ASSEMBLY	2	30-1098
9	THRUST PLATE	2	30-1100
10	DOWEL PIN	4	30-1102
11	PORT END COVER W/ BUSHINGS	1	30-1137
12	STUD	4	30-1134
13	GEAR HOUSING 1-3/4"	1	30-1208
14	SEAL KIT		
	SEAL KIT (integral shaft only) comes w/ 30-1162	1	30-1207

REF#	PARTS DESCRIPTION	REQ	PART #
	SEAL KIT (continental shaft only)	1	30-1211
15	SHAFT SEAL		
	CONTINENTAL SHAFT ONLY:		
	300 PSI (included in M350 seal kit)	1	30-1209
	INTEGRAL SHAFT ONLY:		
	500 PSI	1	30-1036
*	SHAFT TOOL (not shown) (required for install)	1	30-1162
	GEAR SET OPTION A:		
16	INTEGRAL SHAFT AND GEAR 1-3/4"	1	30-1024
	GEAR SET OPTION B:		
17	RETAINING RING	1	30-1258
18	RETAINING WASHER	1	30-1259
19	2-1/4" GEAR SET	1	30-1025
20	CONTINENTAL SHAFT, SPLINED	1	30-1335

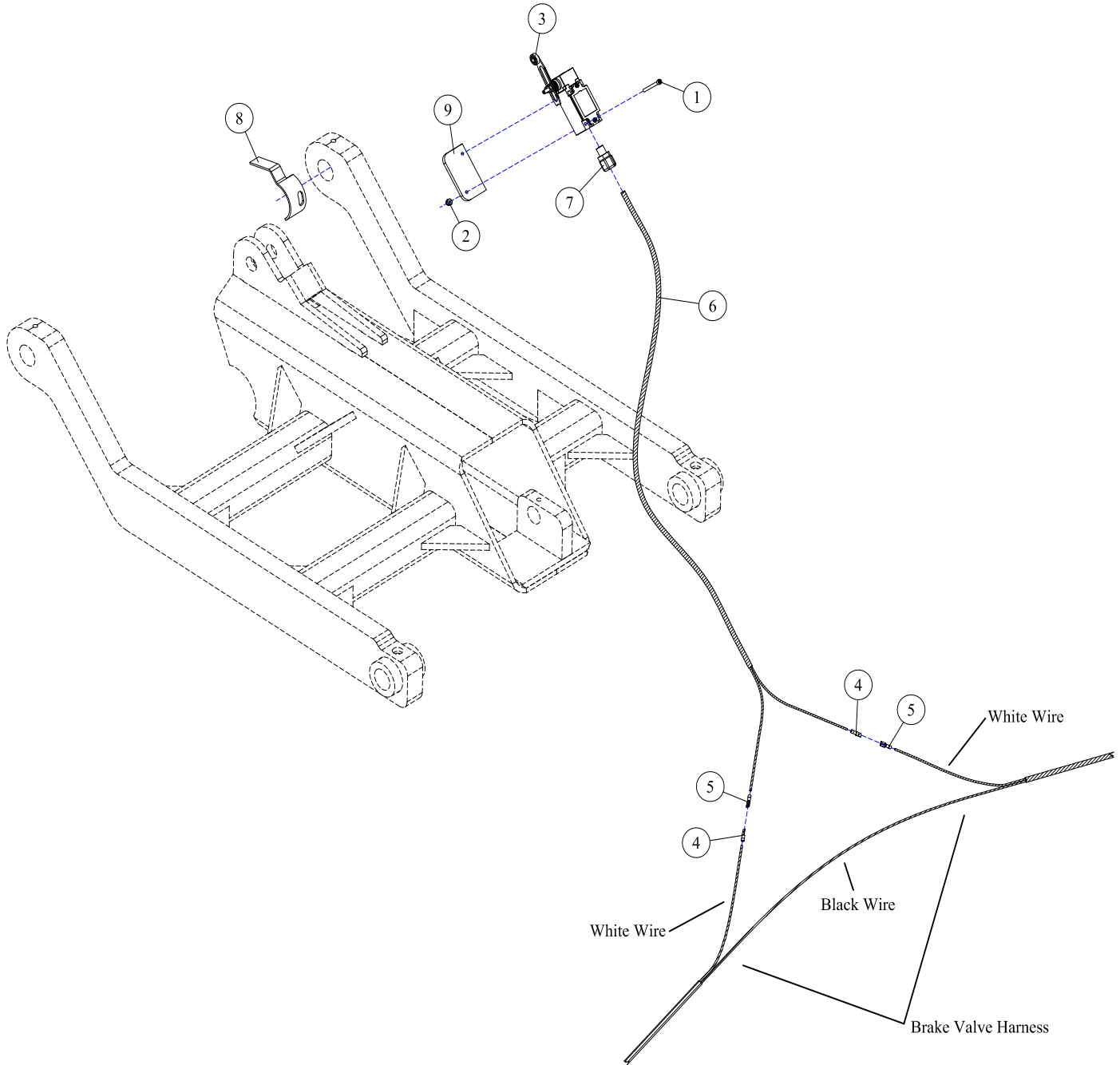
ELECTRICAL ASSEMBLIES



POWER SWITCHBOX - TRIPLE HEAD

REF#	PARTS DESCRIPTION	REQ	PART #
1	FAN REVERSING SWITCH	1	16-0004
2	ON/OFF SWITCH	3	16-0005
3	FUSE HOLDER	3	16-0007
4	LOCK SWITCH	1	16-0013
5	LED INDICATOR	4	16-0055

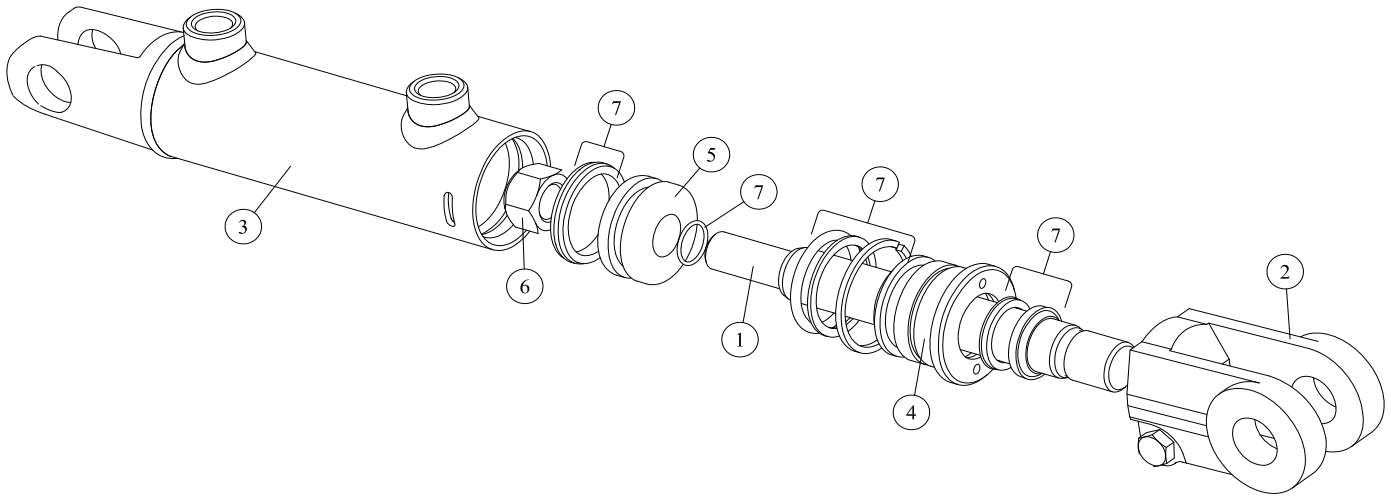
LIMIT SWITCH - DRAFT BEAM HEIGHT LIMITER



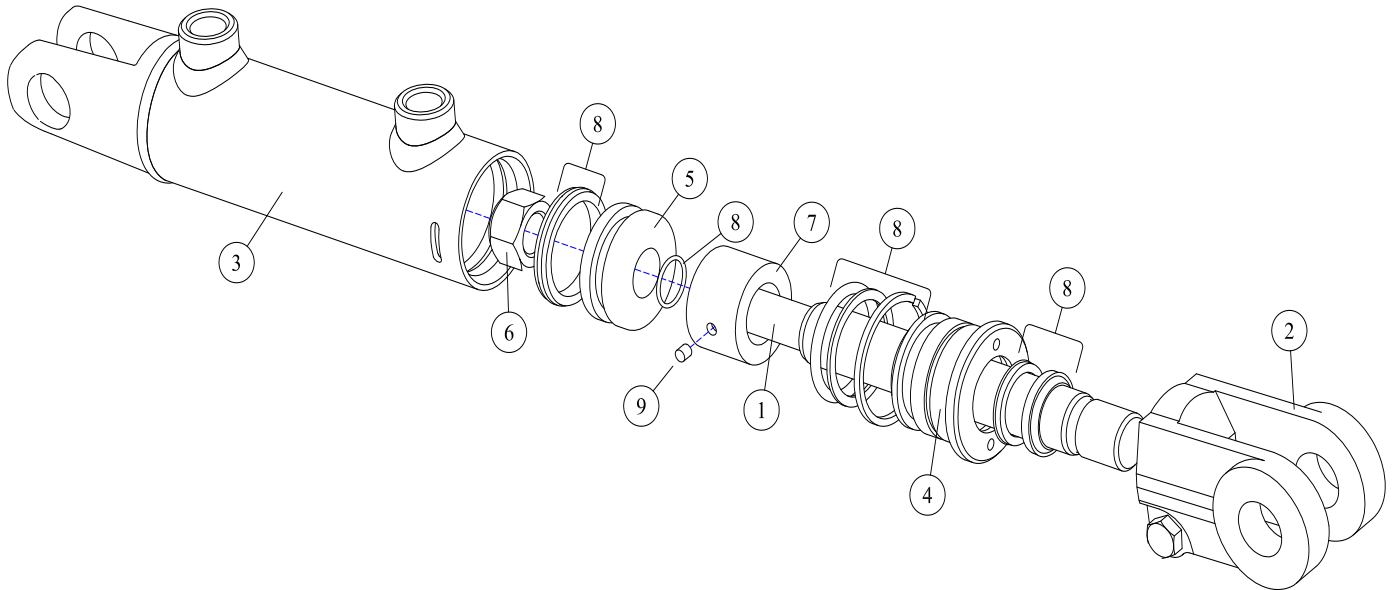
REF#	PARTS DESCRIPTION	REQ	PART #
1	#10 - 24 X 2 SHCS	2	11-0786
2	#10 - 24 NYLOCK NUT	2	11-1051
3	LIMIT SWITCH	1	16-0016
4	14-16GA MALE PUSH-ON CONNECTOR	2	16-0040
5	14-16GA FEMALE PUSH-ON CONNECTOR	2	16-0041
6	14/2 PRIMARY WIRE	Avail/ft	16-0042
7	3/8 CONDUIT STRAIN RELIEF	1	16-0043
8	CAM TILT BRACKET		
	LEFT	1	24-0039
	RIGHT	1	24-0040
9	LIMIT SWITCH PLATE	1	31-0023

LIFT ASSEMBLIES



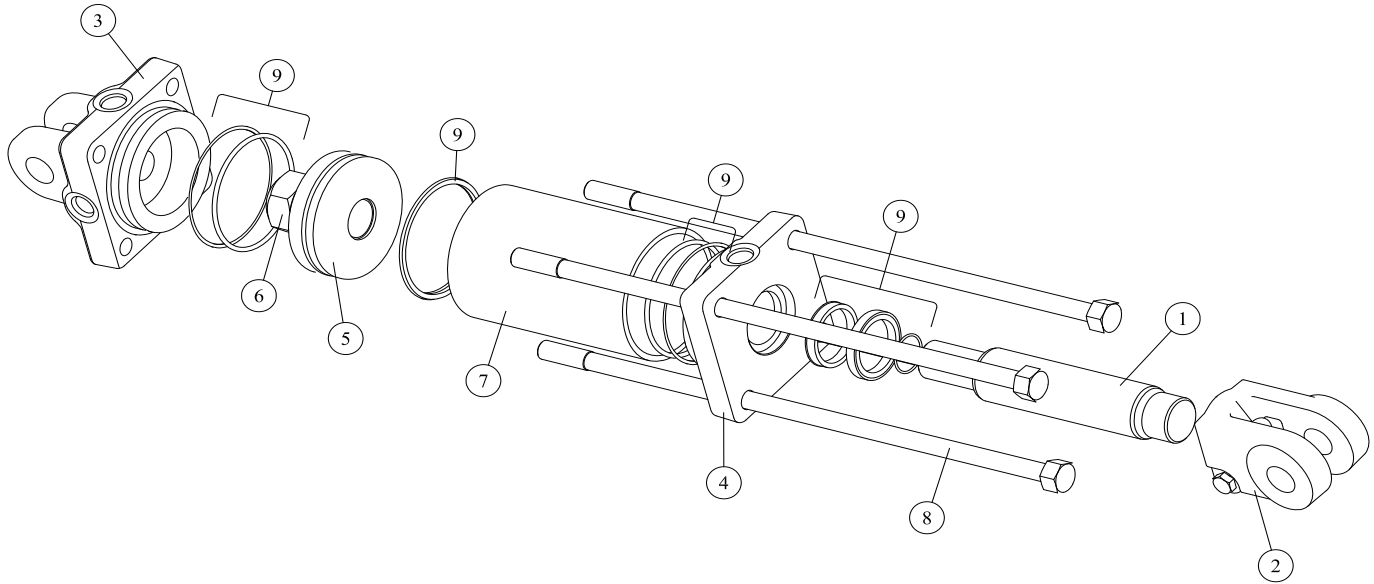
14-0001 - 3X10 WELDED CYLINDER

REF#	PARTS DESCRIPTION	REQ	PART #
1	PISTON ROD	1	14-1130
2	CLEVIS ASSEMBLY	1	14-1160
3	BUTT & TUBE ASSEMBLY	1	14-1140
4	GLAND	1	14-1155
5	PISTON	1	14-1150
6	LOCKNUT	1	14-1120
7	SEAL KIT	1	33-0038

14-0004 - 3X12 WELDED CYLINDER, SLUGGED

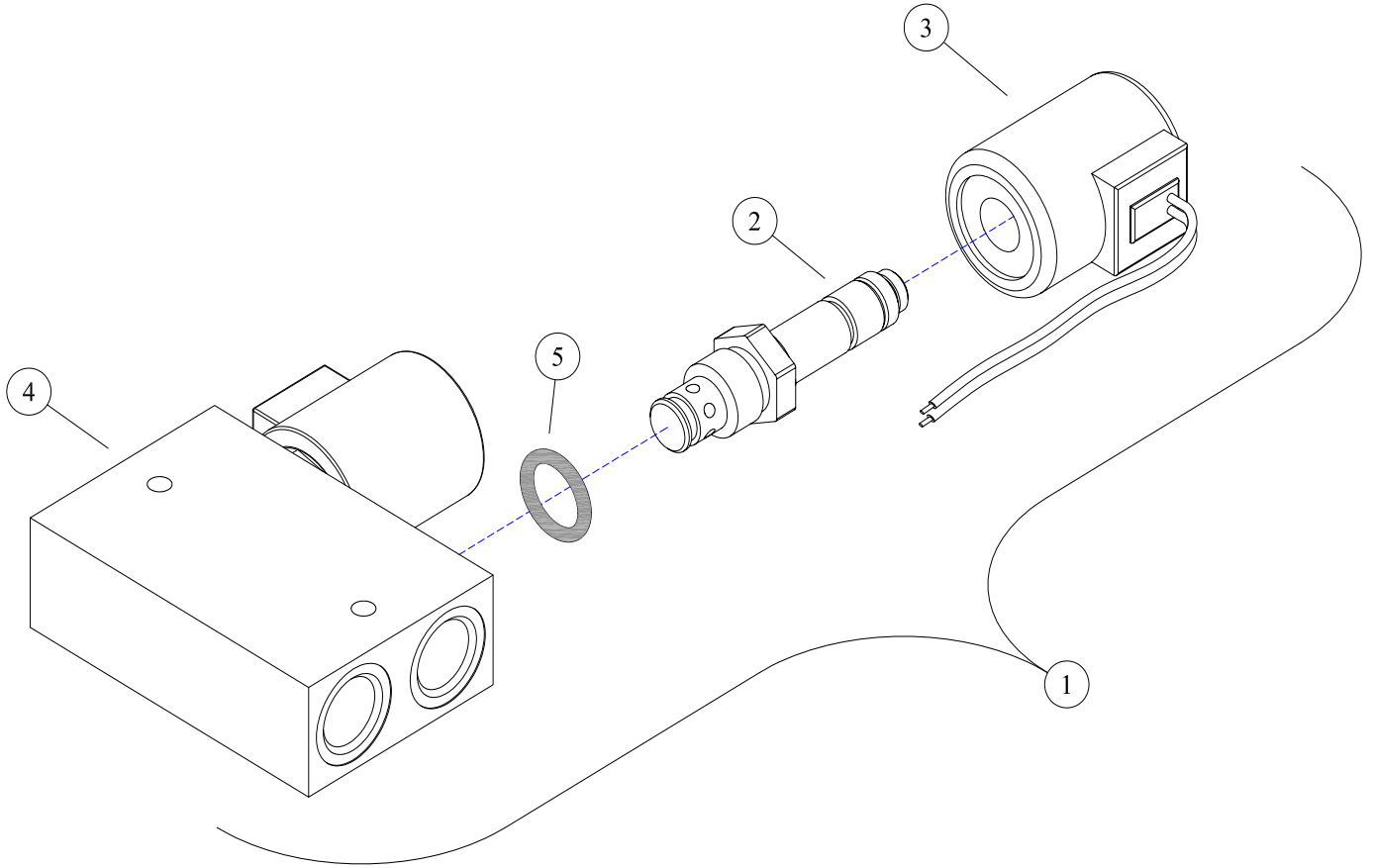
REF#	PARTS DESCRIPTION	REQ	PART #
1	PISTON ROD	1	14-1131
2	CLEVIS ASSEMBLY	1	14-1160
3	BUTT & TUBE ASSEMBLY	1	14-1141
4	GLAND	1	14-1155
5	PISTON	1	14-1150
6	LOCKNUT	1	14-1120
7	SLUG	1	14-1191
8	SEAL KIT	1	33-0038
9	SET SCREW	1	11-2007

14-0009 - 3X12 TIE-ROD CYLINDER



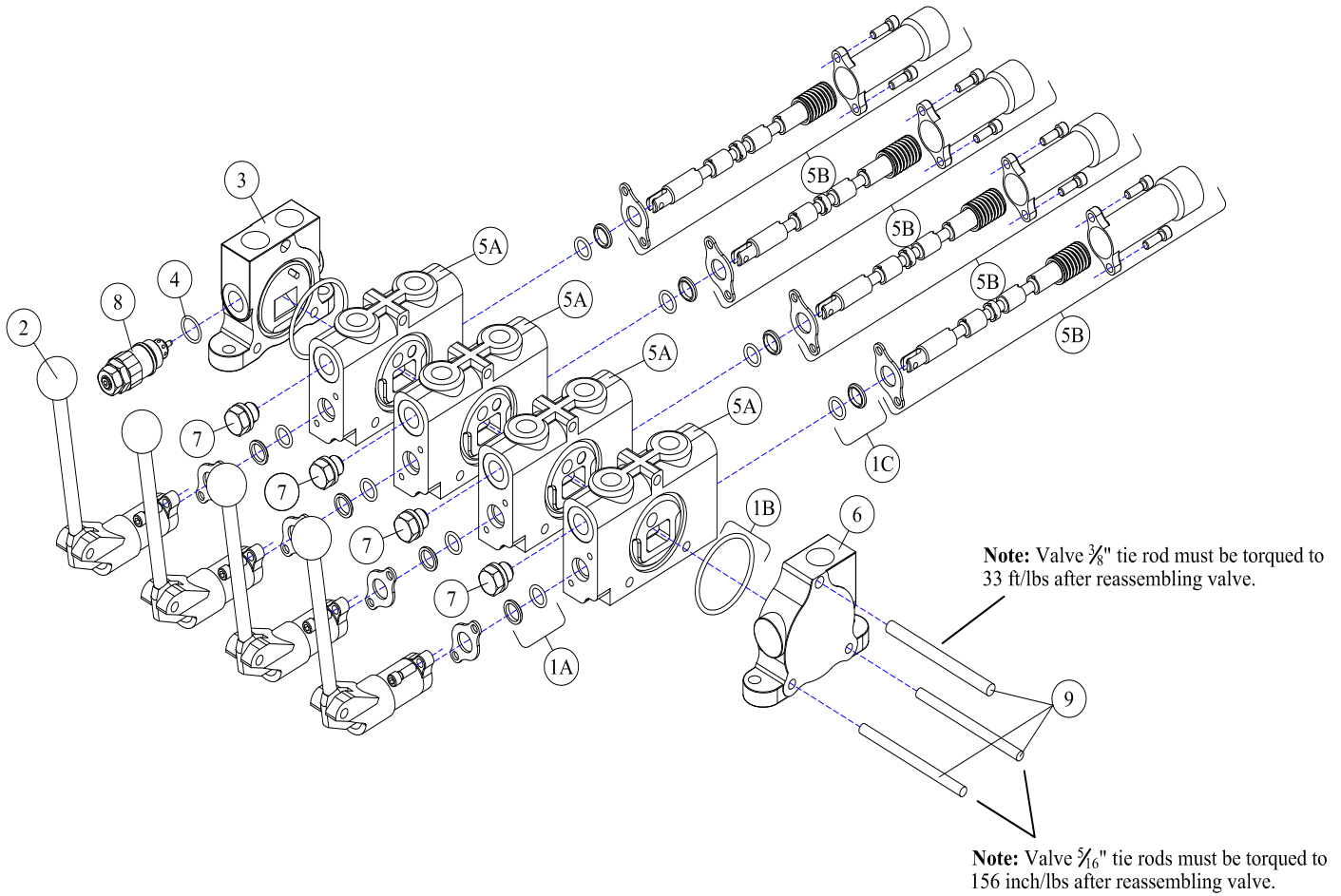
REF#	PARTS DESCRIPTION	REQ	PART #
1	PISTON ROD	1	14-1003
2	CLEVIS ASSEMBLY	1	14-1004
3	BUTT	1	14-1007
4	GLAND	1	14-1010
5	PISTON	1	14-1028
6	LOCKNUT	1	14-1029
7	TUBE	1	14-1042
8	TIE-ROD ASSEMBLY	4	14-1043
9	SEAL KIT	1	33-0009

16-0058 - CYLINDER LOCK, DUAL



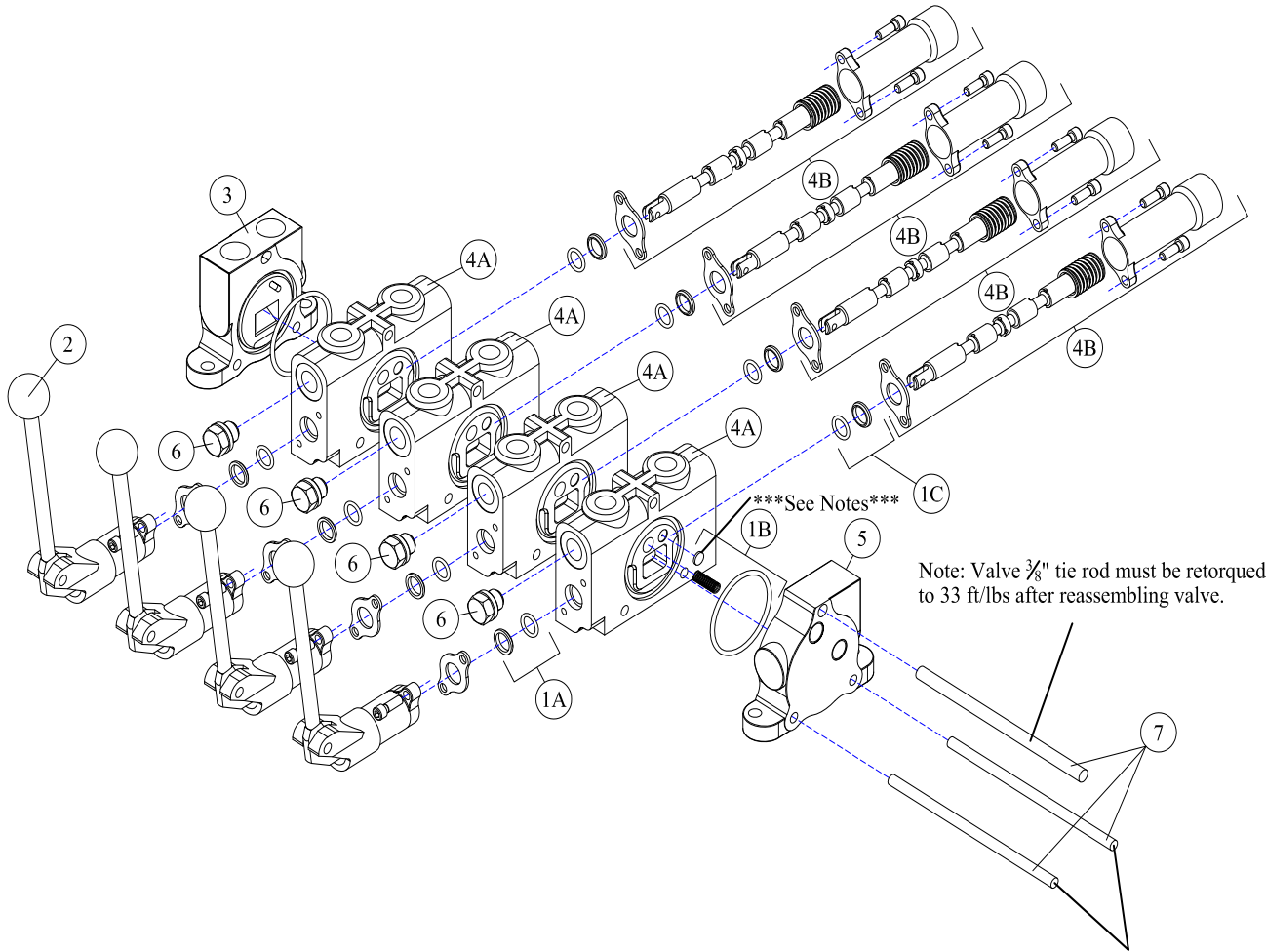
REF#	PARTS DESCRIPTION	REQ	PART #
1	CYLINDER LOCK COMPLETE	1	16-0058
2	CARTRIDGE	2	16-0082
3	WIRE CAP	2	16-0100
4	BODY	Call	16-0110
5	O-RING	2	33-0060

LIFT VALVE - MECHANICAL CABLE, 4-SPOOL, POWER BEYOND



REF#	PARTS DESCRIPTION	REQ	PART #
1	VALVE SECTION SEAL KIT, INCLUDES 1A,1B & 1C	4	39-0510
2	LEVER ASSEMBLY	4	39-0513
3	INLET COVER SECTION	1	39-0519
4	RELIEF VALVE SEAL	1	39-0523
5	SINGLE ACTING VALVE W/ FLOAT, INCLUDES 5A & 5B	1	39-0595
6	POWER BEYOND END CAP	1	39-0522
7	TAPERED RELIEF PLUG	4	39-1009
8	2600 PSI RELIEF	1	39-1027
9	TIE ROD KIT	1	39-0526

LIFT VALVE - MECHANICAL CABLE, 4-SPOOL, LOAD SENSE

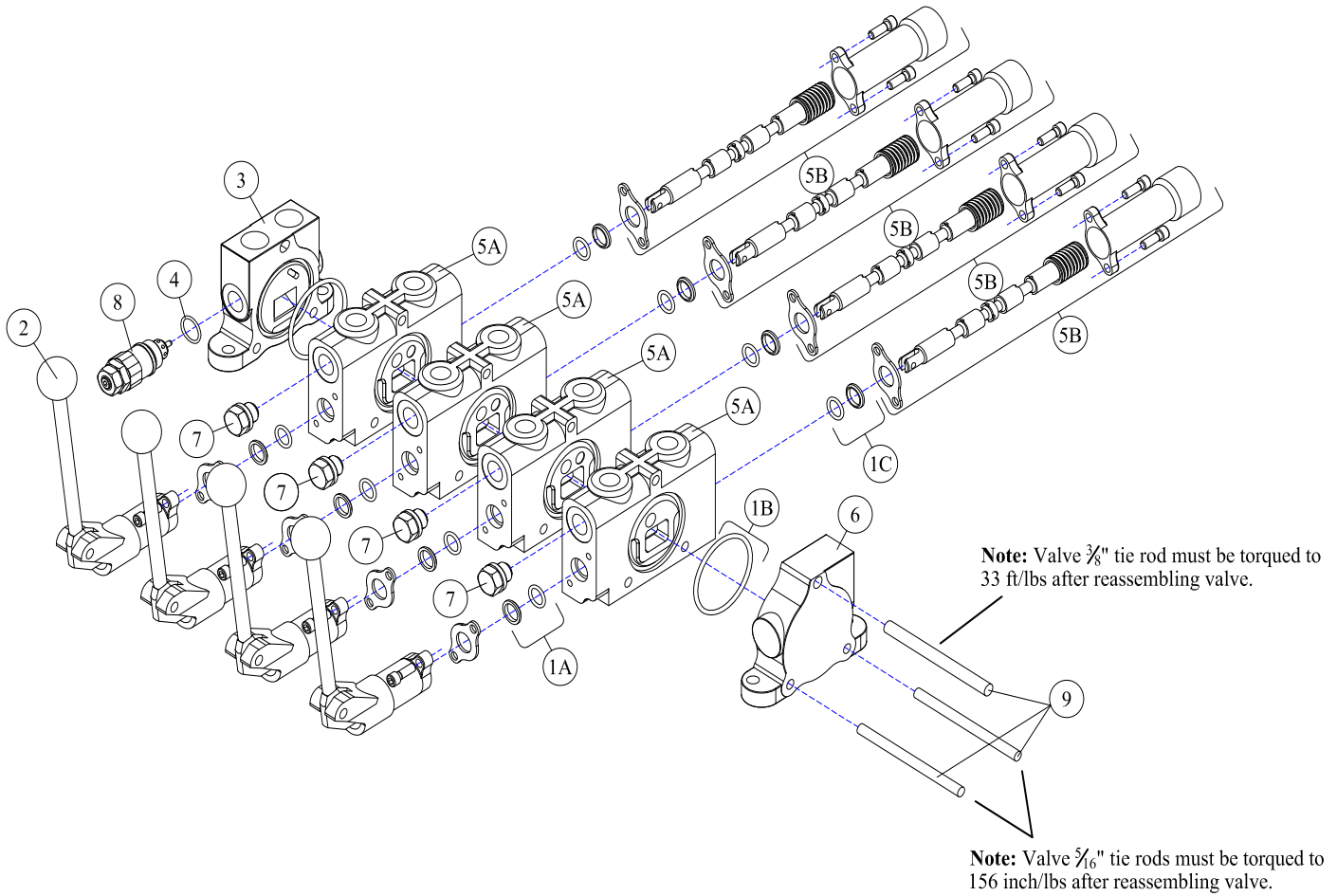


Note: Shuttle puck only needed in last section when using two load sense lines in series.

Note: Valve 5/16" tie rods must be retorqued to 156 inch/lbs after reassembling valve.

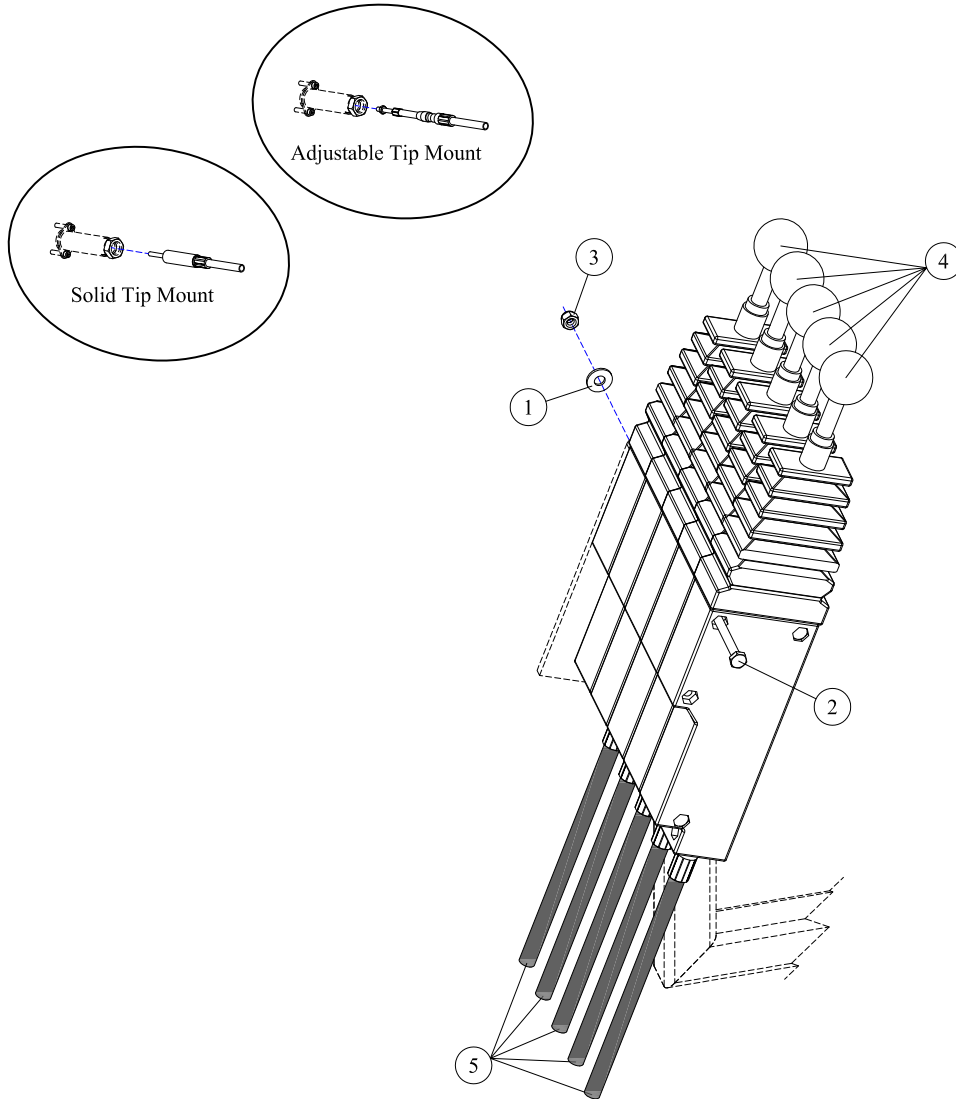
REF#	PARTS DESCRIPTION	REQ	PART #
1	VALVE SECTION SEAL KIT, INCLUDES 1A,1B & 1C	4	39-0511
2	LEVER ASSEMBLY	4	39-0513
3	INLET COVER SECTION	1	39-0582
4	SINGLE ACTING VALVE W/ FLOAT, INCLUDES 4A & 4B	4	39-0516
5	LOAD SENSE END CAP	1	39-0572
6	TAPERED RELIEF PLUG	4	39-1009
7	TIE ROD KIT	1	39-0526

LIFT VALVE - MECHANICAL CABLE, 4-SPOOL, OPEN CENTER



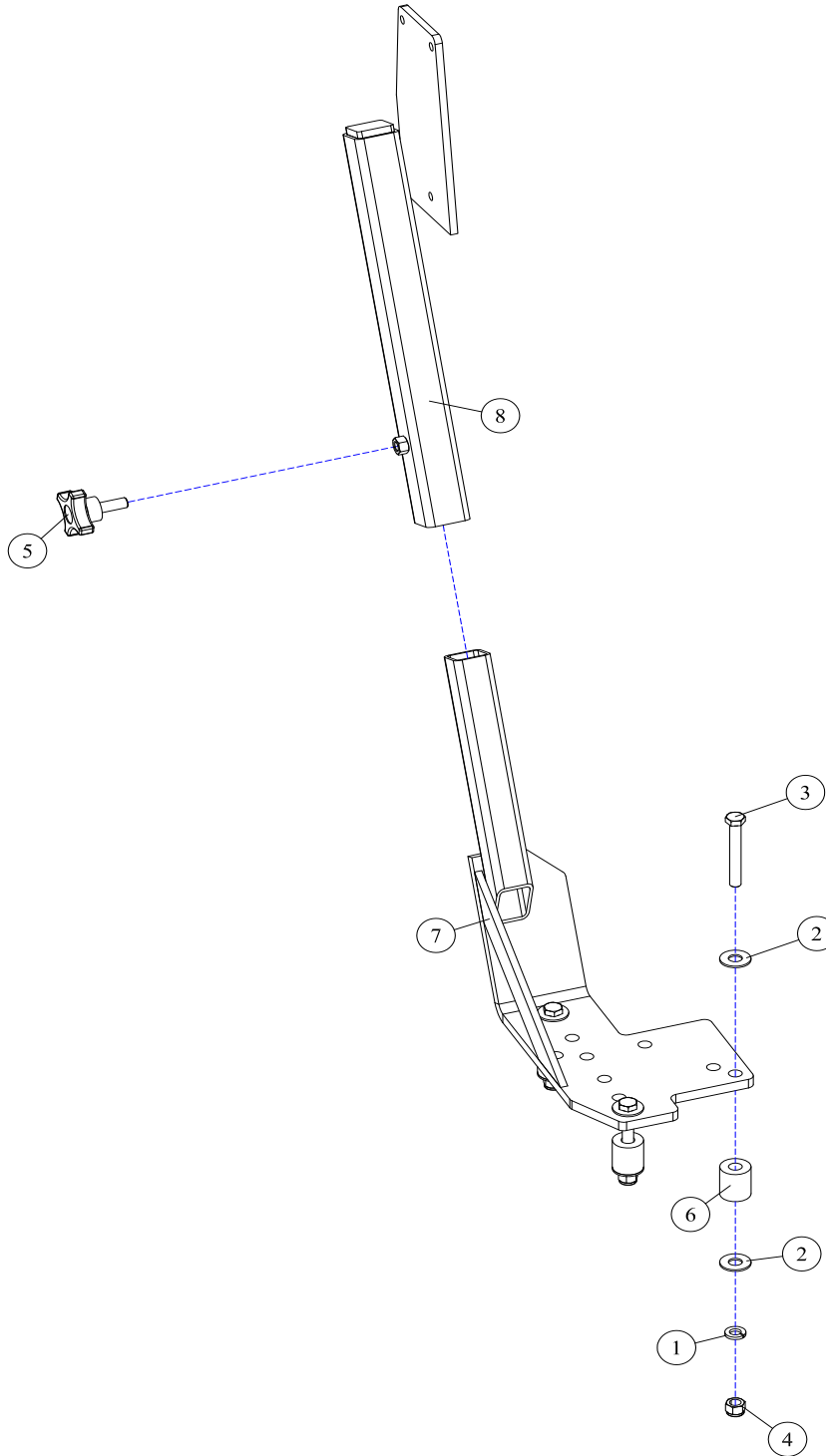
REF#	PARTS DESCRIPTION	REQ	PART #
1	VALVE SECTION SEAL KIT, INCLUDES 1A, 1B & 1C	4	39-0510
2	LEVER ASSEMBLY	4	39-0513
3	INLET COVER SECTION	1	39-0519
4	RELIEF VALVE SEAL	1	39-0523
5	SINGLE ACTING VALVE W/ FLOAT, INCLUDES 5A & 5B	1	39-0595
6	OPEN CENTER END CAP	1	39-0521
7	TAPERED RELIEF PLUG	4	39-1009
8	2600 PSI RELIEF	1	39-1027
9	TIE ROD KIT	1	39-0526

CONTROLS ASSEMBLY - MECHANICAL LEVERS AND CABLES



REF#	PARTS DESCRIPTION	REQ	PART #
1	1/4 FLAT WASHER	3	11-0023
2	1/4 NC HEX CAPSCREW		
	1/4 X 4 NC HEX CAPSCREW (2-SPOOL)	3	11-0593
	1/4 X 6 NC HEX CAPSCREW (3-SPOOL)	3	11-0595
	1/4 X 7 NC HEX CAPSCREW (4-SPOOL)	3	11-0546
	1/4 X 7-1/2 NC HEX CAPSCREW (4-SPOOL)	3	11-0824
	1/4 X 9 NC HEX CAPSCREW (5-SPOOL)	3	11-0828
3	1/4 NC NYLOCK NUT	3	11-1022
4	CABLE CONTROL BOX	2 - 5	12-0010
5	CONTROL CABLE		
	72" - FENDER MOUNT STD.	2 - 5	12-0011
	46" -	2 - 5	12-0024
	60" -	2 - 5	12-0028
	108" - REAR MOUNT STD.	2 - 5	12-0039
	122" -	2 - 5	12-0043
	144" - SOLID TIP MOUNT	2 - 5	12-0058

CONTROLS ASSEMBLY - CONTROL STAND, FLOOR MOUNT, QD

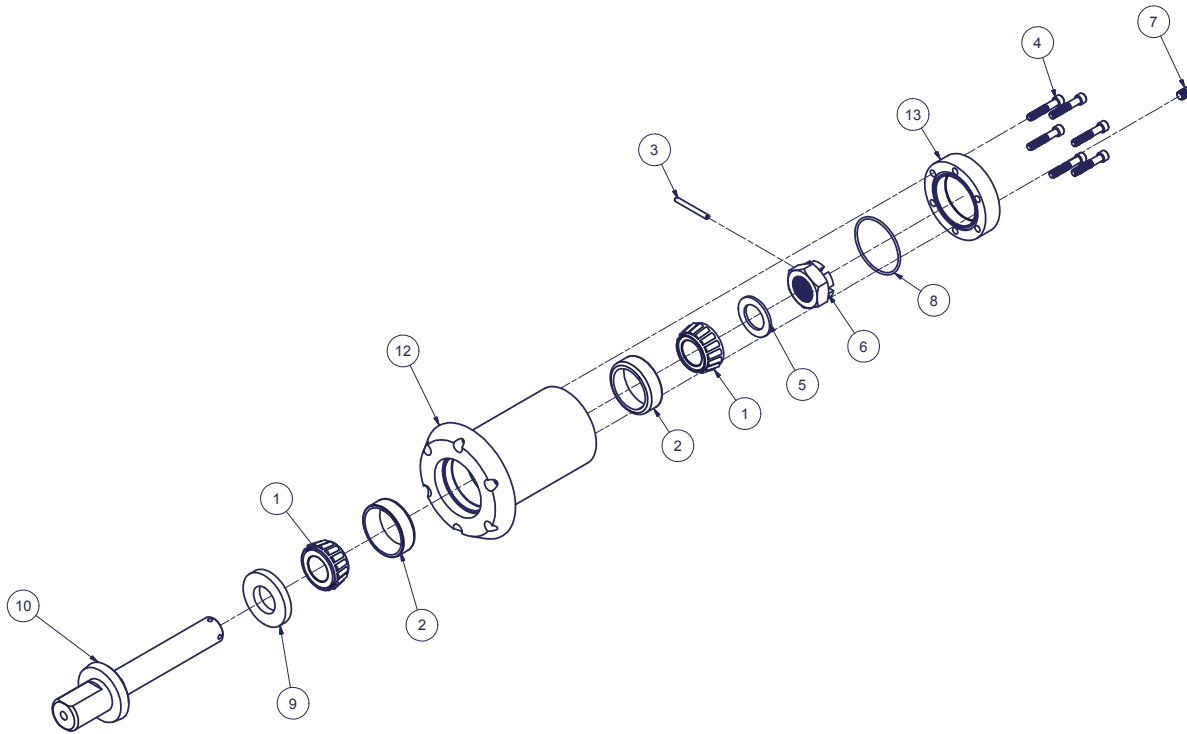


REF#	PARTS DESCRIPTION	REQ	PART #
1	3/8 LOCK WASHER	3	11-0005
2	3/8 FLAT WASHER	6	11-0009
3	3/8 X 2-3/4 NC HEX CAPSCREW	3	11-0711
4	3/8 NC NYLOCK NUT	3	11-1024
5	3/8 X 1 NC 4-LOBE KNOB-SCREW	1	11-2029
6	SPACER 1 OD X 7/16 ID X 1-3/16	3	39-0506
7	LOWER CABLE CONTROL BRACKET	1	39-0603
8	UPPER CABLE CONTROL BRACKET	1	39-0604

MISCELLANEOUS ASSEMBLIES



BEARING - GROUND ROLLER, 10-1051



REF#	PARTS DESCRIPTION	REQ	PART#	TORQUE (ft-lbs)	TORQUE (Nm)
1	TAPER BEARING	2	10-1049		
2	TAPER BEARING RACE	2	10-1050		
3	ROLL PIN	1	11-2006		
4	5/16 X 1-3/4 NC SHCS	6	11-2065	28.7	38.9
5	THRUST WASHER 2.00 OD X 1.26 ID	1	11-2067		
6	CASTLE NUT	1	11-2074		
7	1/8 NPT PLUG	1	21-1136		
8	O RING 2-7/8 OD	1	24-0273		
9	SEAL TCM 132713TC	1	33-0031		
10	ASSY GROUND ROLLER SHAFT	1	41-1533		
11	SERVICE KIT, GROUND ROLLER (NOT SHOWN)	1	44-0780		
12	GROUND ROLLER INSERT	1	90-7045		
13	GROUND ROLLER END CAP	1	90-7048		

10-1051 Rev 000

(PAGE INTENTIONALLY BLANK)



**100% SATISFACTION
GUARANTEE**
★ GET IT, LOVE IT, *or* LEAVE IT! ★

**72-HOUR PARTS
SHIPPING GUARANTEE**