



# PARTS BOOK

## FORESTRY HEADS

• 36" CUT • BOOM MOUNT •

DIAMOND MOWERS, LLC  
350 E 60<sup>th</sup> St. North  
Sioux Falls, SD 57104

FOR WARRANTY CALL DIAMOND MOWERS DIRECT:  
**888-960-0364**

OUR TECHNICIANS WILL DIAGNOSE YOUR SITUATION  
OVER THE PHONE TO GET YOU UP AND RUNNING QUICKLY.

Phone: 605-977-3300  
Fax: 605-655-5870  
[www.diamondmowers.com](http://www.diamondmowers.com)

**DEMAND BRILLIANCE.**

© DIAMOND MOWERS, LLC



## Foreword

This manual contains the parts breakdown and identification of the various components and structures that make up your mower implement.

The illustrations, drawings, and diagrams in this manual are based on the latest information available at the time of publication. Your machine may have product improvements and features not yet contained in this parts manual.

Diamond Mowers, LLC reserves the right to make changes at any time without notice or obligation.

Diamond Mowers, LLC™ and Wetblade™ are trademarks of Diamond Mowers, LLC.

This manual should be consulted prior and while assembling the unit, and anytime parts or assembly clarification is needed.

### Copyright© 2016 Diamond Mowers, LLC

All rights reserved. While every precaution has been taken in the preparation of this manual, the publisher assumes no responsibility for errors or omissions. No part of this book covered by the copyrights hereon may be reproduced or copied in any form or by any means - graphic, electronic, or mechanical, including photocopying, taping, or information storage and retrieval systems - without written permission of the publisher.



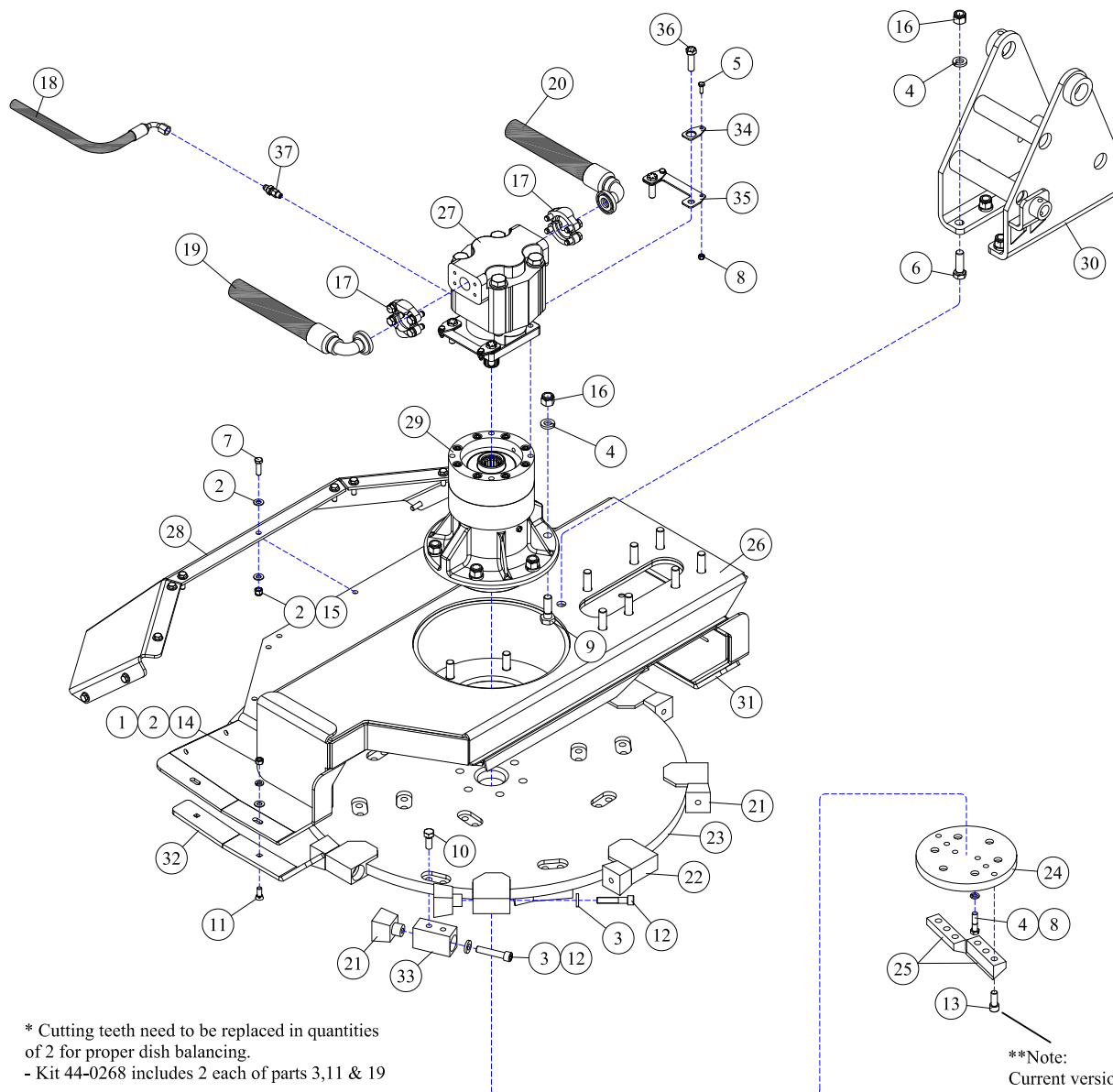
## Table of Contents

<b>FORESTRY HEADS</b> .....	4
FORESTRY HEADS - 36", DIRECT DRIVE .....	5
FORESTRY HEADS - DECAL IDENTIFICATION .....	6
<b>DRIVE ASSEMBLIES</b> .....	7
DRIVE ASSEMBLIES - 36" BRUSH CUTTER (WHEEL LOADER POWERED BOOM ONLY) .....	8
<b>DECK ASSEMBLIES</b> .....	9
30-0524 - MOTOR ASSEMBLY .....	10
35-0093 - DIRECT DRIVE SPINDLE .....	11
PRESSURE RELIEF VALVE - 35-0093 DIRECT DRIVE SPINDLE .....	12

# FORESTRY HEADS



## FORESTRY HEADS - 36", DIRECT DRIVE

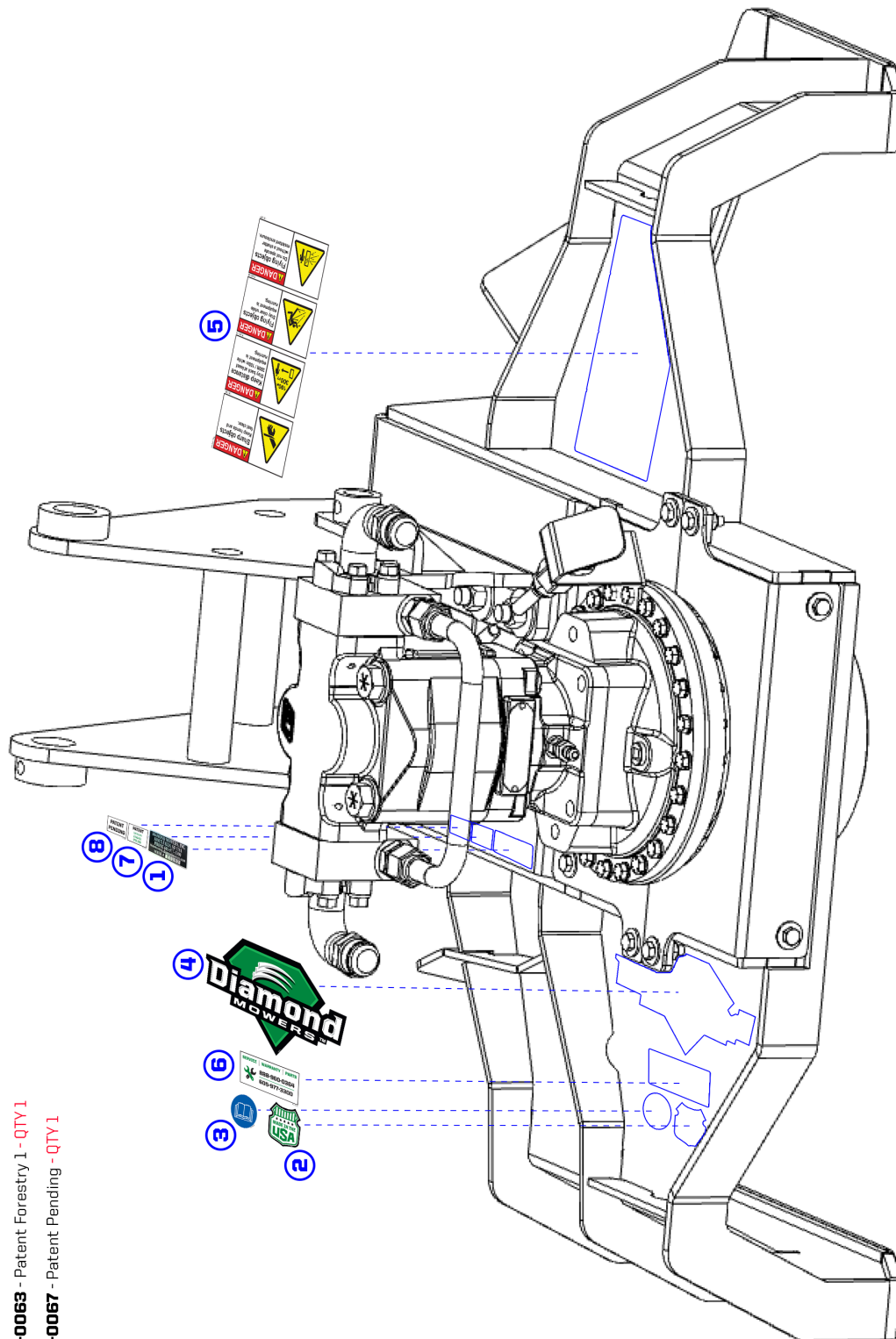


REF#	PARTS DESCRIPTION	REQ	PART #
1	3/8 LOCK WASHER GR 5 CLEAR	6	11-0005
2	5/16 FLAT WASHER GR 5 CLEAR	28	11-0015
3	1/2 SAE FLAT WASHER GR 8 YELLOW	20	11-0042
4	5/8 LOCK WASHER GR 8 YELLOW	20	11-0043
5	1/4 X 3/4 NC HEX CAP	4	11-0588
6	5/8 X 2 NF HEX CAP GR 8 YELLOW	8	11-0508
7	3/8 X 1-1/4 NC HEX CAP	11	11-0533
8	1/4 NC NYLOCK NUT	4	11-1022
9	5/8 X 2-1/4 H.S. NF HEX CAP	12	11-0691
10	1/2 X 1 NF HEX CAP GR 5	24	11-0639
11	3/8 X 1-1/4 NC PLOW BOLT	6	11-0804
12	1/2 X 3 NF SHCS	20	11-0929
13	<b>**PLANER BOLTS</b>		
	1/2 X 1-1/4 NC SHCS (current version)	6	11-0965
	1/2 X 1-1/4 NF SHCS (previous version)	6	11-0934
14	3/8 NC HEX NUT	6	11-1001
15	3/8 NC NYLOCK NUT	11	11-1024
16	5/8 H.S. NF STOVER NUT	14	11-1143
17	#20 FLANGE KIT	2	21-2105
18	HOSE 3/8 X 62 (3/8FJIC-90DEG X 1/2MJIC)	1	21-4304

REF#	PARTS DESCRIPTION	REQ	PART #
19	HOSE 1 X 65 (1FJIC X #20FLG-90DEG)	1	21-2516
20	HOSE 1 X 57 (1FJIC X #20FLG-90DEG)	1	21-2517
21	*STEEL CUTTING TOOTH	20	22-0019
22	TOOTH HOLDER - REPLACEMENT	AVAIL.	P24-0186-12
23	36" FORESTRY DISH COMPLETE, TOOTH LOCK	1	24-0243
24	MULCHER, BOLT PROTECTOR	1	24-0191
25	MULCHER, CENTER PLANER	2	24-0192
26	36" FORESTRY BRUSH CUTTER SHELL	1	25-0183
27	M365 2-1/4 GEAR, 14 SPLINE (Excluding wheel loader-powered booms.)	1	30-0524
28	BOLT ON REAR GUARD, 36" FBC	1	31-0426
29	SPINDLE ASSEMBLY - SPLINE	1	35-0088
30	MAST BOLT-ON BOOM DECK	1	41-0195
31	36" SAW DECK, LEFT SHOE	1	42-0044
32	36" SAW DECK, RIGHT SHOE	1	42-0045
33	TOOTH HOLDER	12	90-7034
34	MOTOR BOLT LOCK TAB	4	31-0503
35	MOTOR BOLT LOCK BASE	2	31-0504
36	1/2-20 X 1-3/4 H.S. NF HEX CAP GR.8	4	11-0664
37	ADAPTER, 1/4MOR X 3/8MJIC	1	21-1597

## FORESTRY HEADS - DECAL IDENTIFICATION

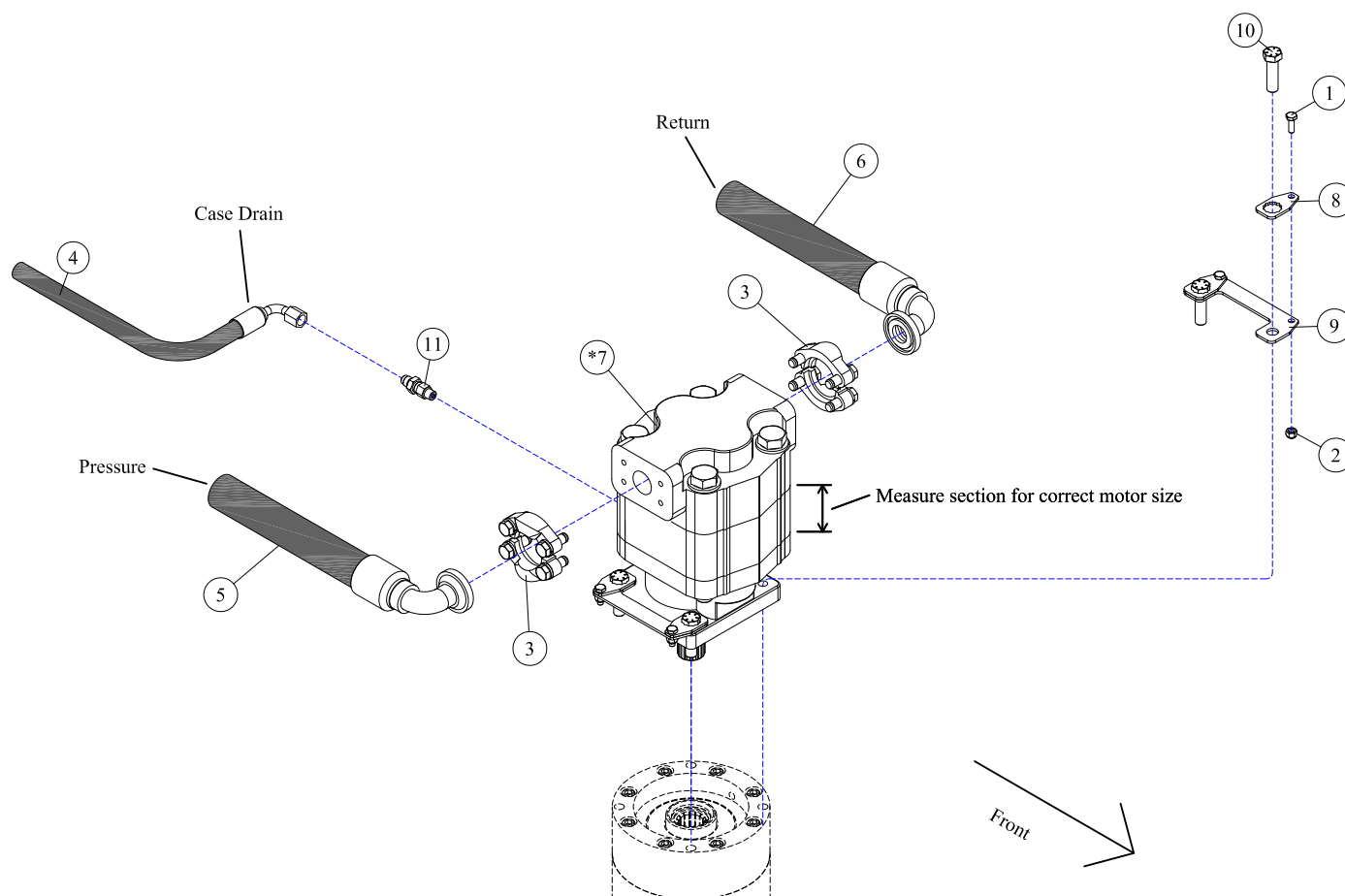
090118



- ① SERIAL NUMBER LABEL - (not included in kit) - QTY 1
- ② PART #15-0055 - Made In USA - QTY 1
- ③ PART #15-0058 - Read Manual - QTY 1
- ④ PART #15-0052 - Diamond Mowers Logo 11" - QTY 1
- ⑤ PART #15-0056 - Decal Group Vertical - QTY 1
- ⑥ PART #15-1016 - Warranty - QTY 1
- ⑦ PART #15-0063 - Patent Forestry 1 - QTY 1
- ⑧ PART #15-0067 - Patent Pending - QTY 1

# DRIVE ASSEMBLIES



**DRIVE ASSEMBLIES - 36" BRUSH CUTTER (WHEEL LOADER POWERED BOOM ONLY)**

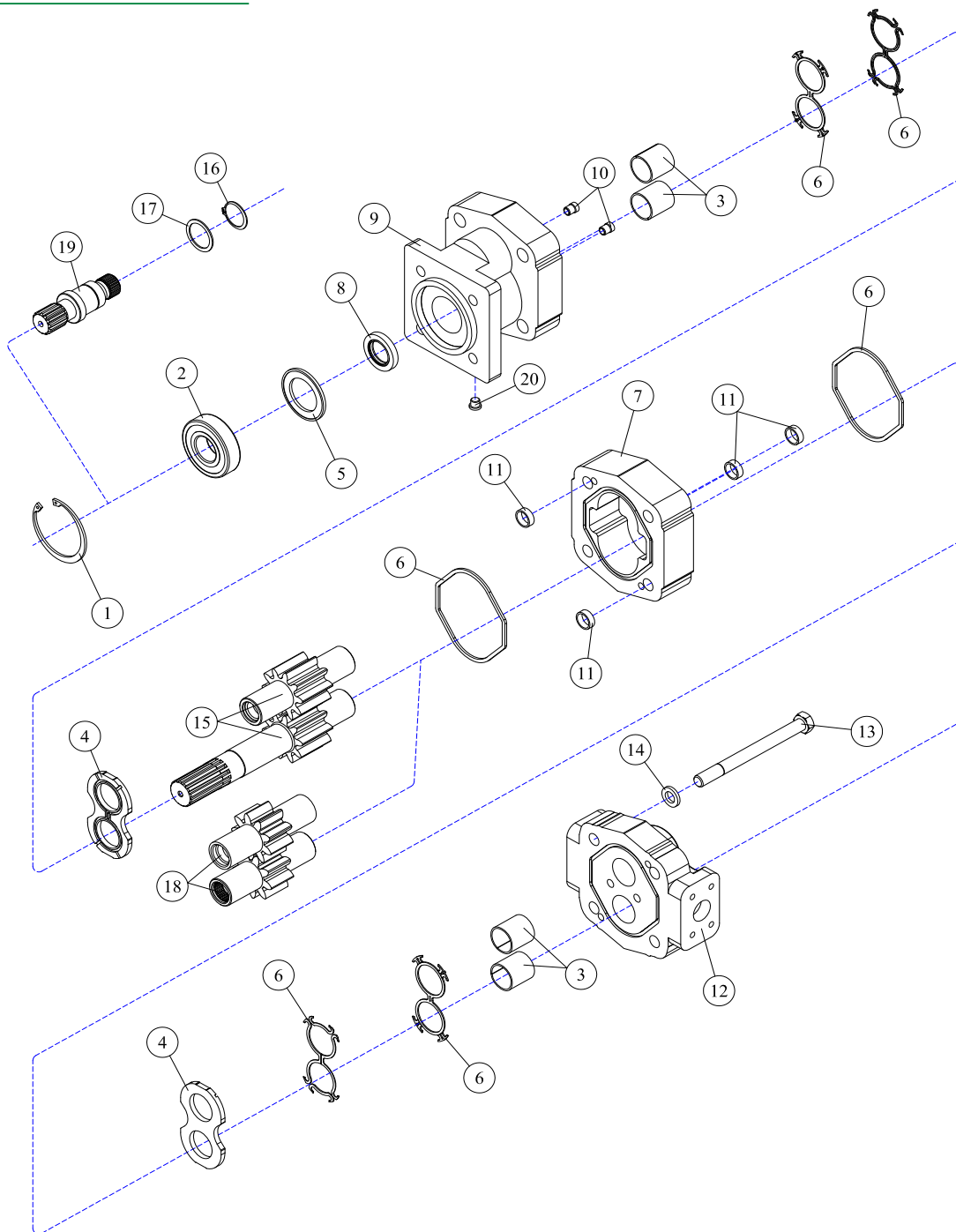
\* Note: These are the flow rates AFTER the oil has passed through the 4:1 divider.

REF#	PARTS DESCRIPTION	REQ	PART #
1	1/4 X 3/4 NC HEX CAP	4	11-0588
2	1/4 NC NYLOCK NUT	4	11-1022
3	#20 FLANGE KIT	2	21-2105
4	HOSE 3/8 X 62 (3/8FJIC-90DEG X 1/2MJIC)	1	21-4304
5	HOSE 1 X 65 (1FJIC X #20FLG-90DEG)	1	21-2516
6	HOSE 1 X 57 (1FJIC X #20FLG-90DEG)	1	21-2517
* 7	<b>MOTOR</b>		
	M365, 1" GEAR SET, 1-1/2" SECT, <b>30-39 GAL/MIN</b>	1	30-0514
	M365, 1-1/2" GEAR SET, 2" SECT, <b>40-45 GAL/MIN</b>	1	30-0515
8	MOTOR BOLT LOCK TAB	4	31-0503
9	MOTOR BOLT LOCK BASE	2	31-0504
10	1/2-20 X 1-3/4 H.S. NF HEX CAP GR.8	4	11-0664
11	ADAPTER, 1/4MOR X 3/8MJIC	1	21-1597



# DECK ASSEMBLIES



**30-0524 - MOTOR ASSEMBLY**

REF#	PARTS DESCRIPTION	REQ	PART #
1	SNAP RING	1	30-1009
2	OUTBOARD BEARING	1	30-1010
3	BUSHING	4	30-1011
4	THRUST PLATE	2	30-1012
5	SEAL RETAINER	1	30-1017
6	M365 SEAL KIT	Avail	30-1021
7	2-1/4" M365 GEAR HOUSING	1	30-1026
8	<b>SHAFT SEAL</b>		
	150 PSI (included in M365 seal kit)	1	30-1210
	500 PSI	1	30-1156
9	SHAFT END COVER	1	30-1086
10	CHECK ASSEMBLY	2	30-1087
11	ALIGNMENT BUSHING	4	30-1090

REF#	PARTS DESCRIPTION	REQ	PART #
12	PORT END COVER	1	30-1091
13	STUD	4	Call
14	WASHER	4	30-1093
	<b>GEAR SET OPTION A:</b>		
15	2-1/4" GEAR SET	1	30-1165
	<b>GEAR SET OPTION B:</b>		
16	RETAINING RING	1	30-1019
17	WASHER	1	30-1020
18	2-1/4" GEAR SET	1	30-1025
19	CONTINENTAL SHAFT, SPLINED	1	30-1144
20	PLUG	1	30-1096
*	SEAL APPLICATOR TOOL (not shown)	Avail	30-1048

**35-0093 - DIRECT DRIVE SPINDLE**

REF#	PARTS DESCRIPTION	REQ	PART #
1	BEARING-CONE (TOP)	1	10-0094
2	BEARING-CUP (TOP)	1	10-0095
3	BEARING-CONE (BOTTOM)	1	10-0096
4	BEARING-CUP (BOTTOM)	1	10-0097
5	BOLT-HEX HEAD	24	11-1611
6	WASHER-FLAT	24	11-1612
7	RING-RETAINING	1	11-1613
8	NUT-LOCK	1	11-1614
9	WASHER-LOCK	1	11-1615
10	SCREW-SKT HD CAP	6	11-1616
11	PIPE PLUG (TO COVER) (MAGNETIC)	1	21-1609
12	PIPE PLUG (TO COVER) (NON-MAGNETIC)	1	21-1610
13	PIPE PLUG (TO HUB) (MAGNETIC)	2	21-1611
14	WASHER-THRUST (TOP)	1	35-0096
15	COUPLING	1	35-0097
16	PLATE-KEEPER	1	35-0098
17	WASHER-THRUST (BOTTOM)	1	35-0099
**18	HUB	1	35-0100
19	SEAL-OIL	1	35-0101
*20	GUARD	1	35-0102
**21	SHAFT-OUTPUT	1	35-0103
22	<b>COVER</b>		
	C BASE (STANDARD)	1	35-0094
	D BASE (OPTIONAL)	1	35-0095

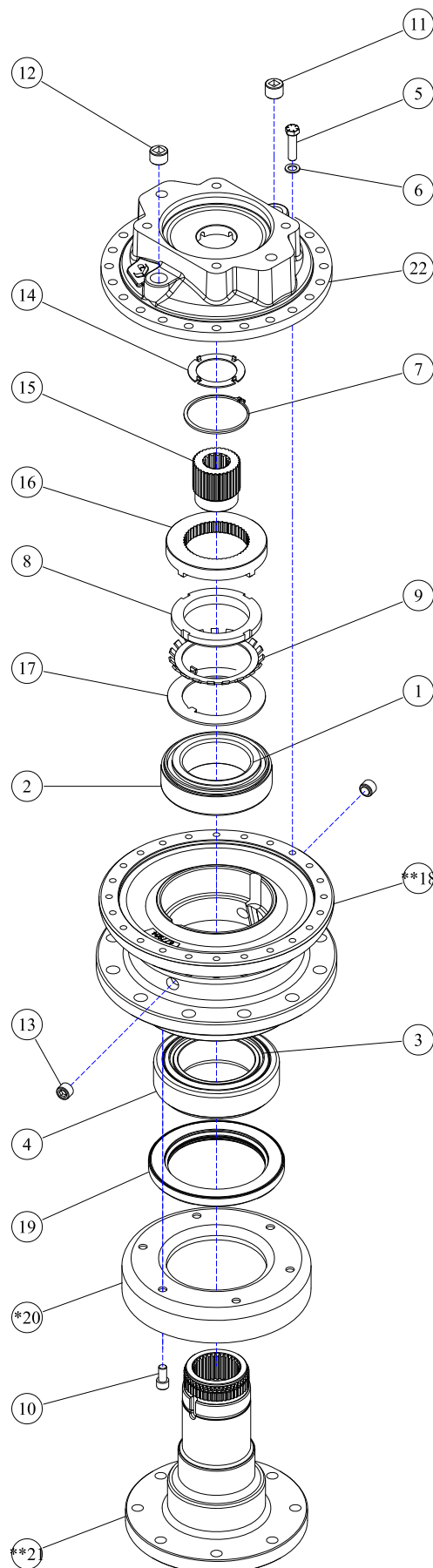
NOTE: WHEN ORDERING ANY ITEMS MARKED \* ABOVE,  
ALSO ORDER SERVICE KIT 33-0078

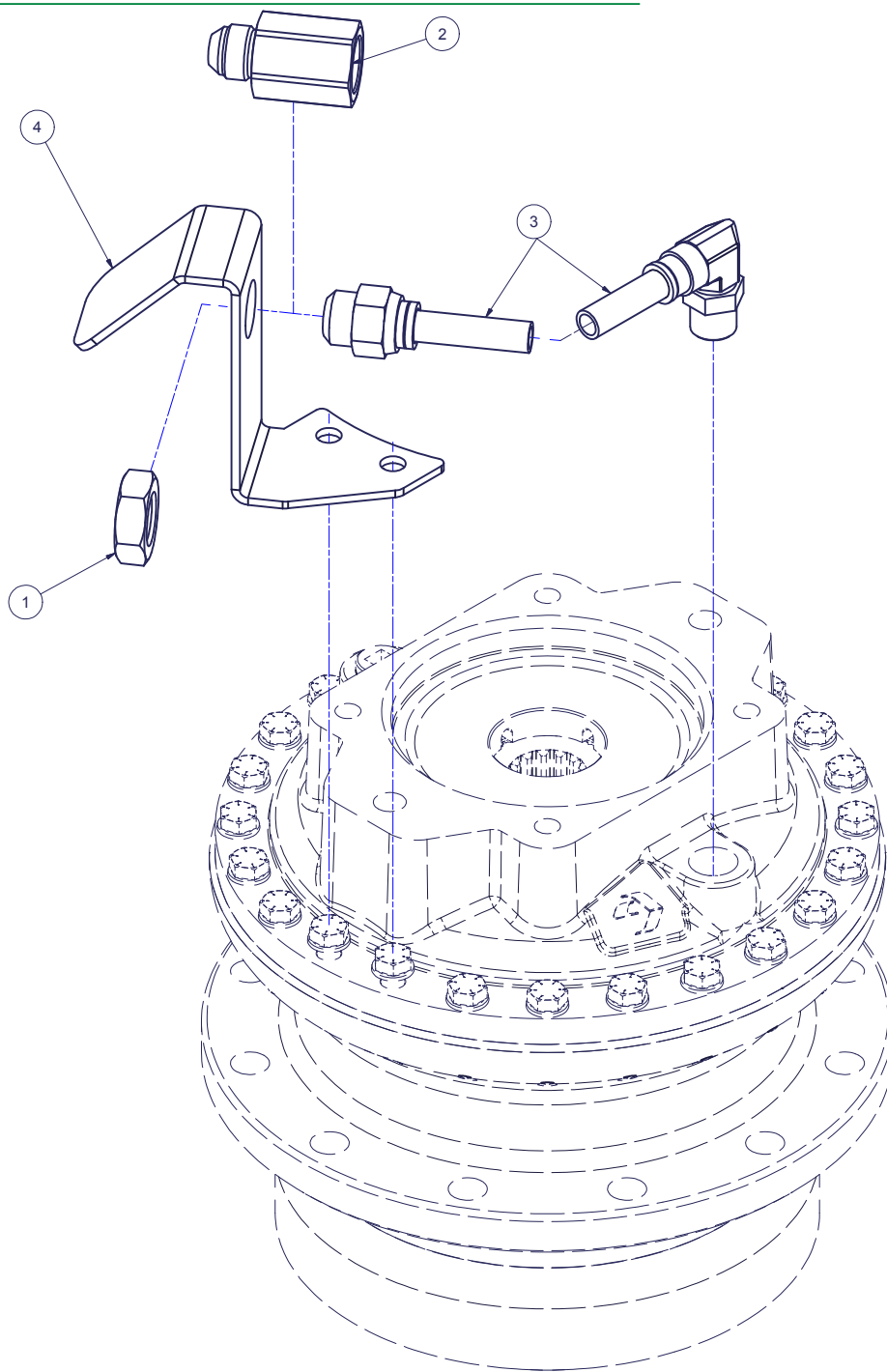
NOTE: WHEN ORDERING ANY ITEMS MARKED \*\* ABOVE,  
ALSO ORDER SERVICE KIT 33-0079

## SERVICE KITS

PART #	DESCRIPTION	INCLUDED ITEMS
33-0078	SEAL KIT	9, 19
33-0079	BEARING & SEAL KIT	1, 2, 3, 4, 9, 19
33-0080	COUPLER KIT	14, 15

KITS ALSO INCLUDE A TUBE OF SEALANT PART NO. 35-0104



**PRESSURE RELIEF VALVE - 35-0093 DIRECT DRIVE SPINDLE**

REF#	PARTS DESCRIPTION	REQ	PART#	TORQUE (ft-lbs)	TORQUE (Nm)
1	7/8 UNF JAM NUT	1	11-1159		
2	JEMTEC D3 SPINDLE RELIEF VALVE	1	21-1653		
3	HOSE 1/2 X 8 (5/8 JIC - 1/2 MP 90 DEG SWIVEL)	1	21-2419		
4	D3 RELIEF VALVE MOUNT	1	31-0688		

**(PAGE INTENTIONALLY BLANK)**



**100% SATISFACTION  
GUARANTEE**  
★ GET IT, LOVE IT, *or* LEAVE IT! ★

**72-HOUR PARTS  
SHIPPING GUARANTEE**