



PARTS BOOK

FORESTRY HEADS

• 36" CUT • EXCAVATOR MOUNT •

DIAMOND MOWERS, LLC
350 E 60th St. North
Sioux Falls, SD 57104

FOR WARRANTY CALL DIAMOND MOWERS DIRECT:
888-960-0364

OUR TECHNICIANS WILL DIAGNOSE YOUR SITUATION
OVER THE PHONE TO GET YOU UP AND RUNNING QUICKLY.

Phone: 605-977-3300
Fax: 605-655-5870
www.diamondmowers.com

DEMAND BRILLIANCE.

© DIAMOND MOWERS, LLC



Foreword

This manual contains the parts breakdown and identification of the various components and structures that make up your mower implement.

The illustrations, drawings, and diagrams in this manual are based on the latest information available at the time of publication. Your machine may have product improvements and features not yet contained in this parts manual.

Diamond Mowers, LLC reserves the right to make changes at any time without notice or obligation.

Diamond Mowers, LLC™ and Wetblade™ are trademarks of Diamond Mowers, LLC.

This manual should be consulted prior and while assembling the unit, and anytime parts or assembly clarification is needed.

Copyright© 2016 Diamond Mowers, LLC

All rights reserved. While every precaution has been taken in the preparation of this manual, the publisher assumes no responsibility for errors or omissions. No part of this book covered by the copyrights hereon may be reproduced or copied in any form or by any means - graphic, electronic, or mechanical, including photocopying, taping, or information storage and retrieval systems - without written permission of the publisher.



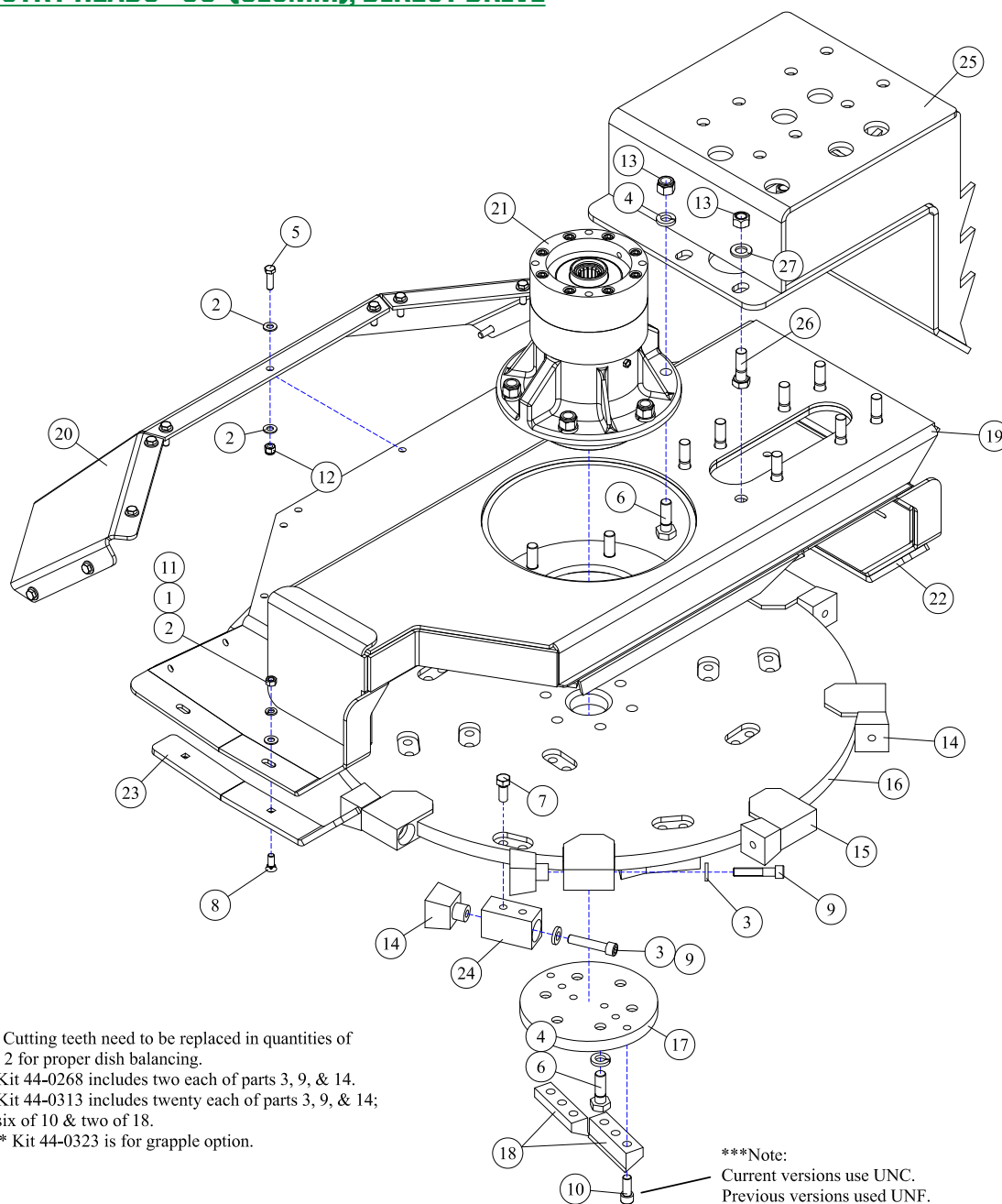
Table of Contents

FORESTRY HEADS	4
FORESTRY HEADS - 36"(915MM), DIRECT DRIVE	5
FORESTRY HEADS - DECAL IDENTIFICATION	6
DRIVE ASSEMBLIES	7
HOW TO DETERMINE YOUR MOTOR PART NUMBER	8
DRIVE ASSEMBLIES - 36"(915MM), 24-32GPM(91-121LPM)	9
DECK ASSEMBLIES	10
30-0514 - MOTOR ASSEMBLY	11
30-0532 - MOTOR ASSEMBLY	12
35-0093 - DIRECT DRIVE SPINDLE	13

FORESTRY HEADS



FORESTRY HEADS - 36" (915MM), DIRECT DRIVE



- * Cutting teeth need to be replaced in quantities of 2 for proper dish balancing.
 -Kit 44-0268 includes two each of parts 3, 9, & 14.
 -Kit 44-0313 includes twenty each of parts 3, 9, & 14; six of 10 & two of 18.
 ** Kit 44-0323 is for grapple option.

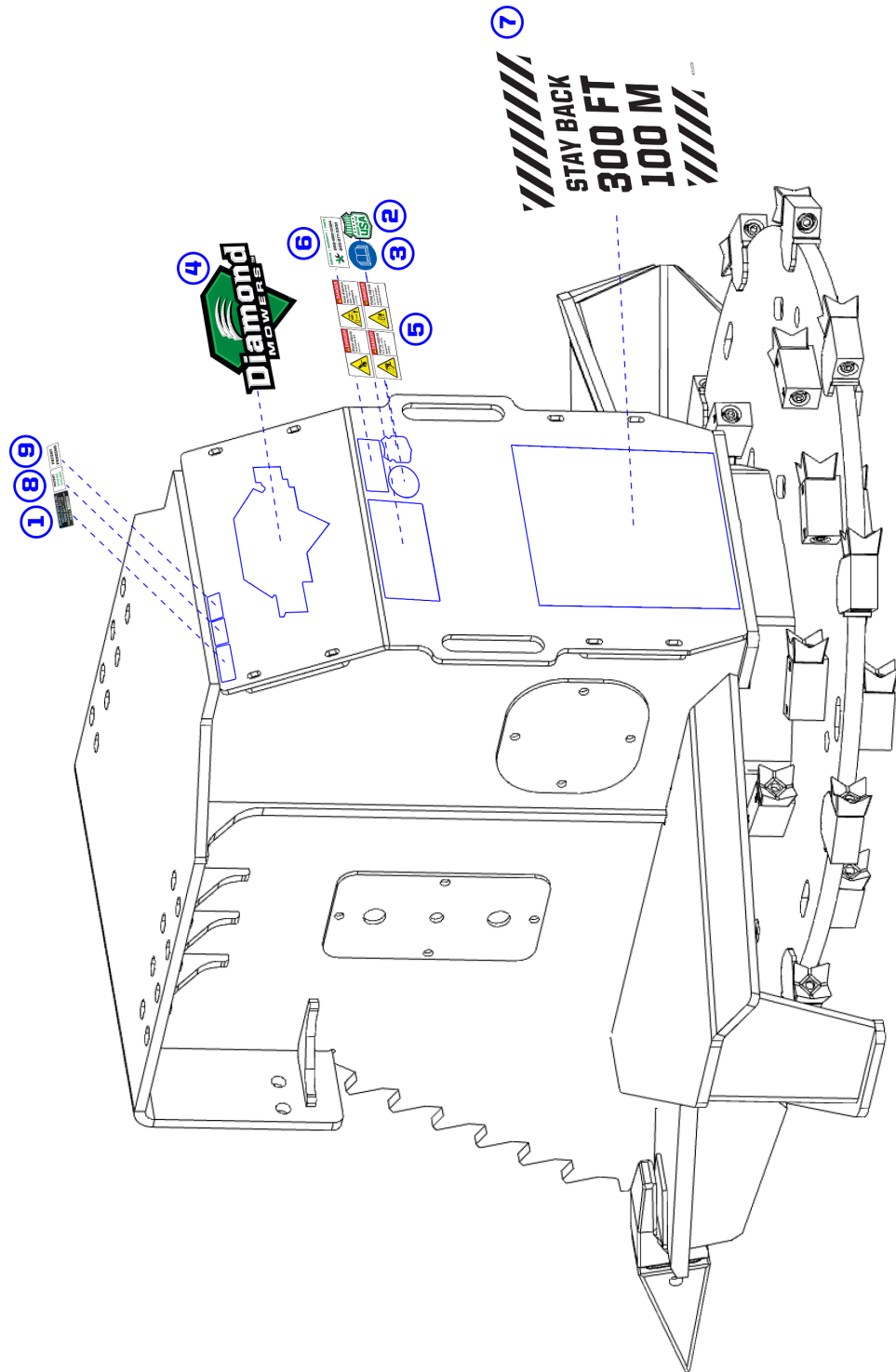
REF#	PARTS DESCRIPTION	REQ	PART #
1	3/8 LOCK WASHER GR 5 CLEAR	6	11-0005
2	5/16 FLAT WASHER GR 5 CLEAR	28	11-0015
3	1/2 SAE FLAT WASHER GR 8 YELLOW	20	11-0042
4	5/8 LOCK WASHER GR 8 YELLOW	12	11-0043
5	3/8 X 1-1/4 NC HEX CAP	11	11-0533
6	5/8 X 2-1/4 H.S. NF HEX CAP	12	11-0691
7	1/2 X 1 NF HEX CAP GR 5	24	11-0639
8	3/8 X 1-1/4 NC PLOW BOLT	6	11-0804
9	1/2 X 3 NF SHCS	20	11-0929
10	*** PLANNER BOLTS		
	1/2 X 1-1/4 NC SHCS (current version)	6	11-0965
	1/2 X 1-1/4 NF SHCS (previous version)	6	11-0934
11	3/8 NC HEX NUT	6	11-1001
12	3/8 NC NYLOCK NUT	11	11-1024
13	5/8 H.S. NF STOVER NUT	14	11-1143

REF#	PARTS DESCRIPTION	REQ	PART #
14	*STEEL CUTTING TOOTH	20	22-0019
15	TOOTH HOLDER - REPLACEMENT	A VAIL.	P24-0186-12
16	36" FORESTRY BRUSH CUTTER COMPLETE	1	24-0203
17	MULCHER, BOLT PROTECTOR	1	24-0191
18	MULCHER, CENTER PLANER	2	24-0192
19	36" FORESTRY BRUSH CUTTER SHELL	1	25-0183
20	BOLT ON REAR GUARD, 36" FBC	1	31-0426
21	SPINDLE ASSEMBLY - SPLINE	1	35-0088
22	36" SAW DECK, LEFT SHOE	1	42-0044
23	36" SAW DECK, RIGHT SHOE	1	42-0045
24	TOOTH HOLDER	12	90-7034
25	**36" FBC GRAPPLE ADAPTER	1	49-0079
26	5/8 X 2 H.S. NF HEX CAP	8	11-0508
27	5/8 SAE FLAT WASHER GR 8 YELLOW	8	11-0012

FORESTRY HEADS - DECAL IDENTIFICATION

080718

- ① SERIAL NUMBER LABEL - (not included in kit) - QTY 1
- ② PART #15-0055 - Made In USA - QTY 1
- ③ PART #15-0058 - Read Manual - QTY 1
- ④ PART #15-0052 - Diamond Mowers Logo 11" - QTY 1
- ⑤ PART #15-0057 - Decal Group Horizontal - QTY 1
- ⑥ PART #15-1016 - Warranty - QTY 1
- ⑦ PART #15-0060 - Stay Back 300/100m - QTY 1
- ⑧ PART #15-0064 - Patent Forestry 2 - QTY 1
- ⑨ PART #15-0067 - Patent Pending - QTY 1



DRIVE ASSEMBLIES



HOW TO DETERMINE YOUR MOTOR PART NUMBER

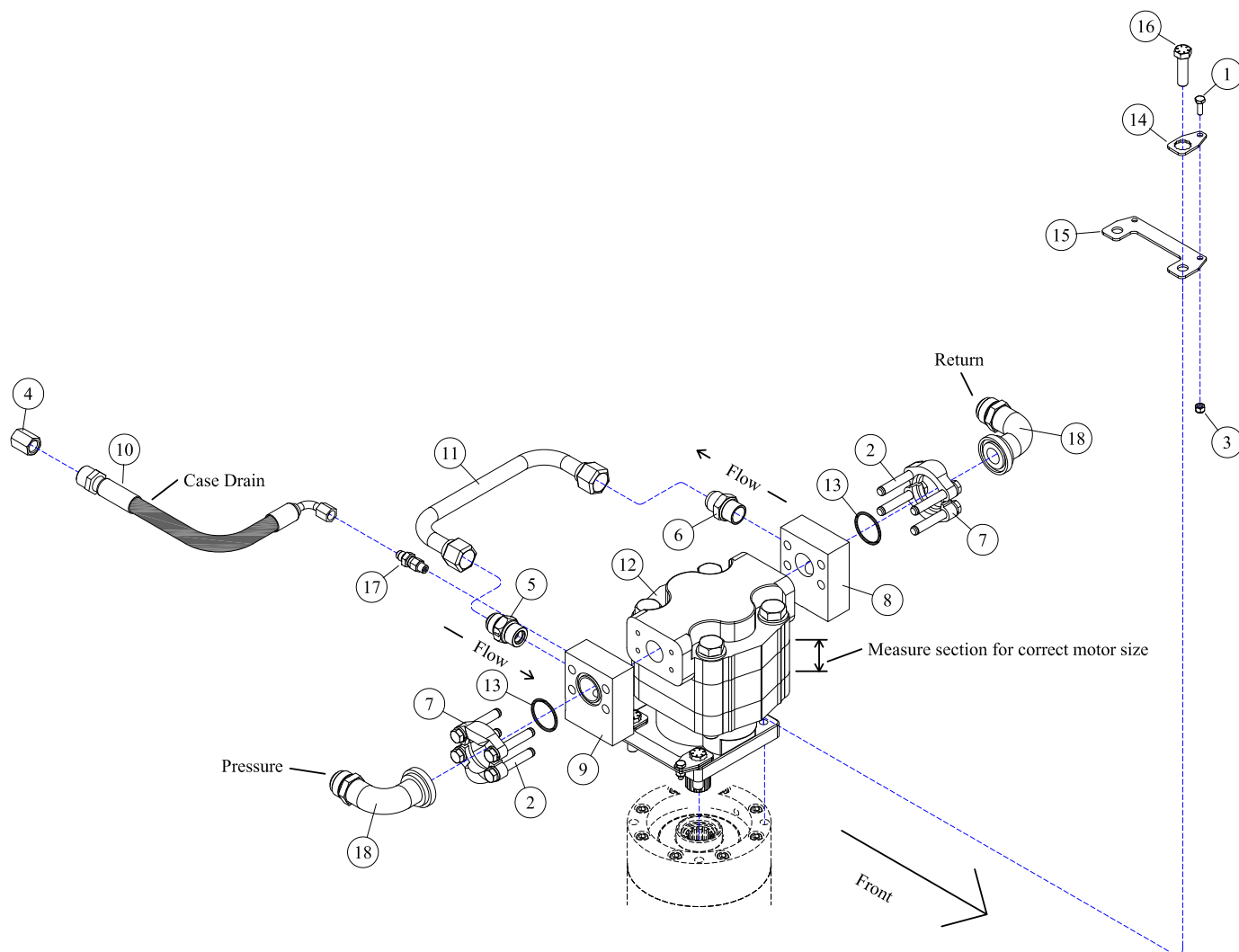
Note: The following parts pages in the **DRIVE ASSEMBLIES** section have multiple motor options; to identify which motor you have, follow the instructions below: you will have to first determine your vehicles hydraulic oil GPM requirements (i.e. 16-41gpm).

- ▷ Determine what your hydraulic oil flow requirements are for your vehicle in gallons per minute (GPM).
- ▷ Locate the **Drive Assemblies** page in the table of contents in the front of this manual that has a GPM range consistent with your vehicle's GPM requirements, and go to that page. Locate your motor part number.
- ▷ If multiple motor options and part numbers are available on your parts page, measure the width of the gear section of your motor to determine which part number is correct for your motor. Measure the gear section shown in the illustration below *(see Figure 1)*.



Motor - (Figure 1)

DRIVE ASSEMBLIES - 36" (915MM), 24-32GPM (91-121LPM)

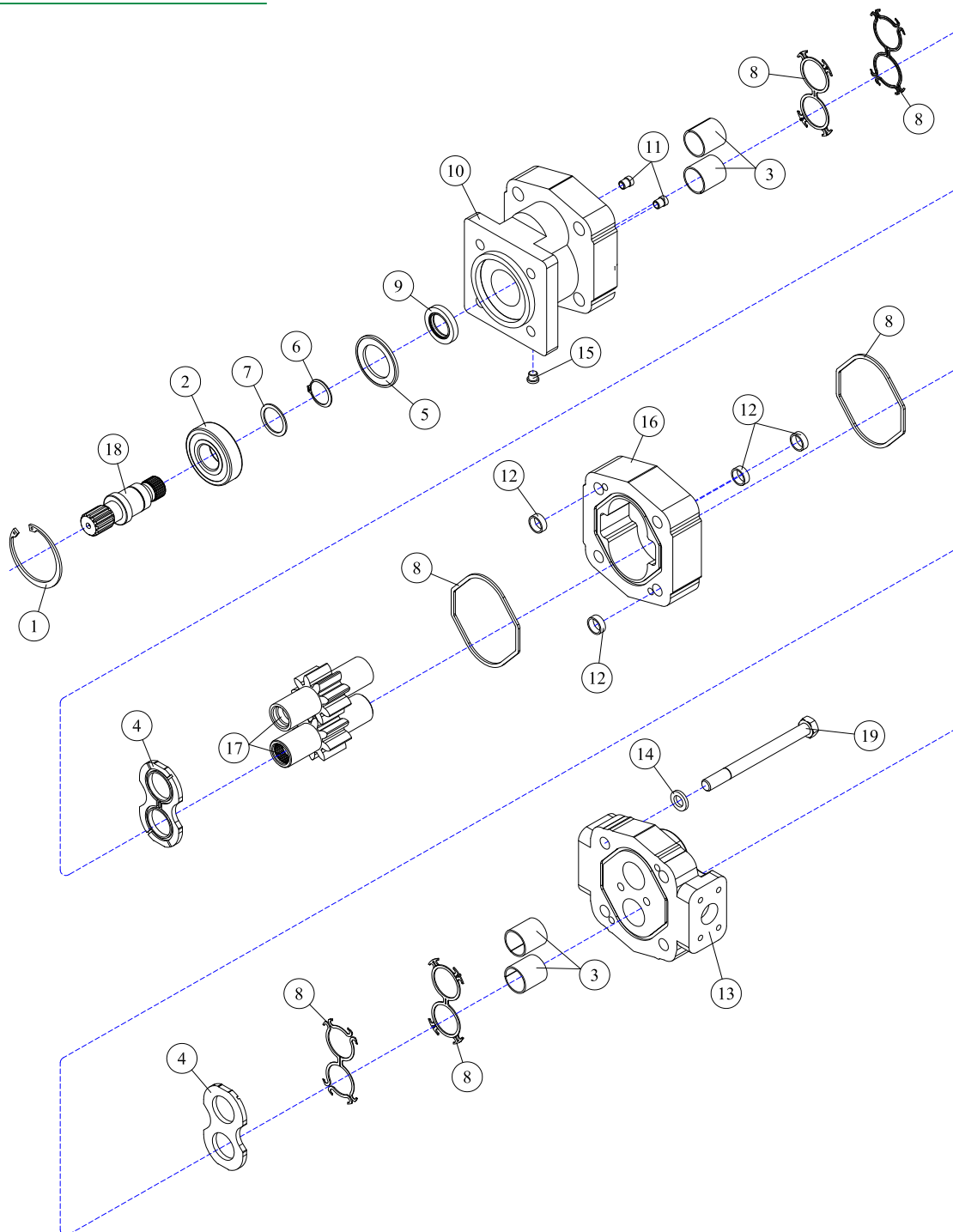


REF#	PARTS DESCRIPTION	REQ	PART #
1	1/4 X 3/4 NC HEX CAP	4	11-0588
2	7/16 X 3 NC HEX CAPSCREW (included with #8 & 9)	4	11-0587
3	1/4 NC NYLOCK NUT	4	11-1022
4	3/8FJIC CAP NUT	1	21-1582
5	CHECK VALVE	1	21-1474
6	3/4 MORB X 3/4 MJIC ADAPTER	1	21-1475
7	#20 FLANGE KIT (included with #8 & 9)	2	21-2105
8	CROSS OVER MANIFOLD KIT (includes #2,7 & 13)	1	21-2180
9	TEE MANIFOLD KIT (includes #2,7 & 13)	1	21-2181
10	HOSE 3/8 X 24 (3/8FJIC 90DEG X 3/8MJIC)	1	21-4291

REF#	PARTS DESCRIPTION	REQ	PART #
11	RUN-AROUND TUBE	1	28-0051
12	MOTOR		
	M365, 1" GEAR SET, 24-28 GPM	1	30-0514
	M365, 1-1/4" GEAR SET, 29-32 GPM	1	30-0532
13	O-RING (included with #7, 8 & 9)	2	33-0013
14	MOTOR BOLT LOCK TAB	4	31-0503
15	MOTOR BOLT LOCK BASE	2	31-0504
16	1/2-20 X 1-3/4 H.S. NF HEX CAP GR.8	4	11-0664
17	ADAPTER, 1/4MOR X 3/8MJIC	1	21-1597
18	ADAPTER, #20FLG X 1MJIC 90DEG	2	21-1267

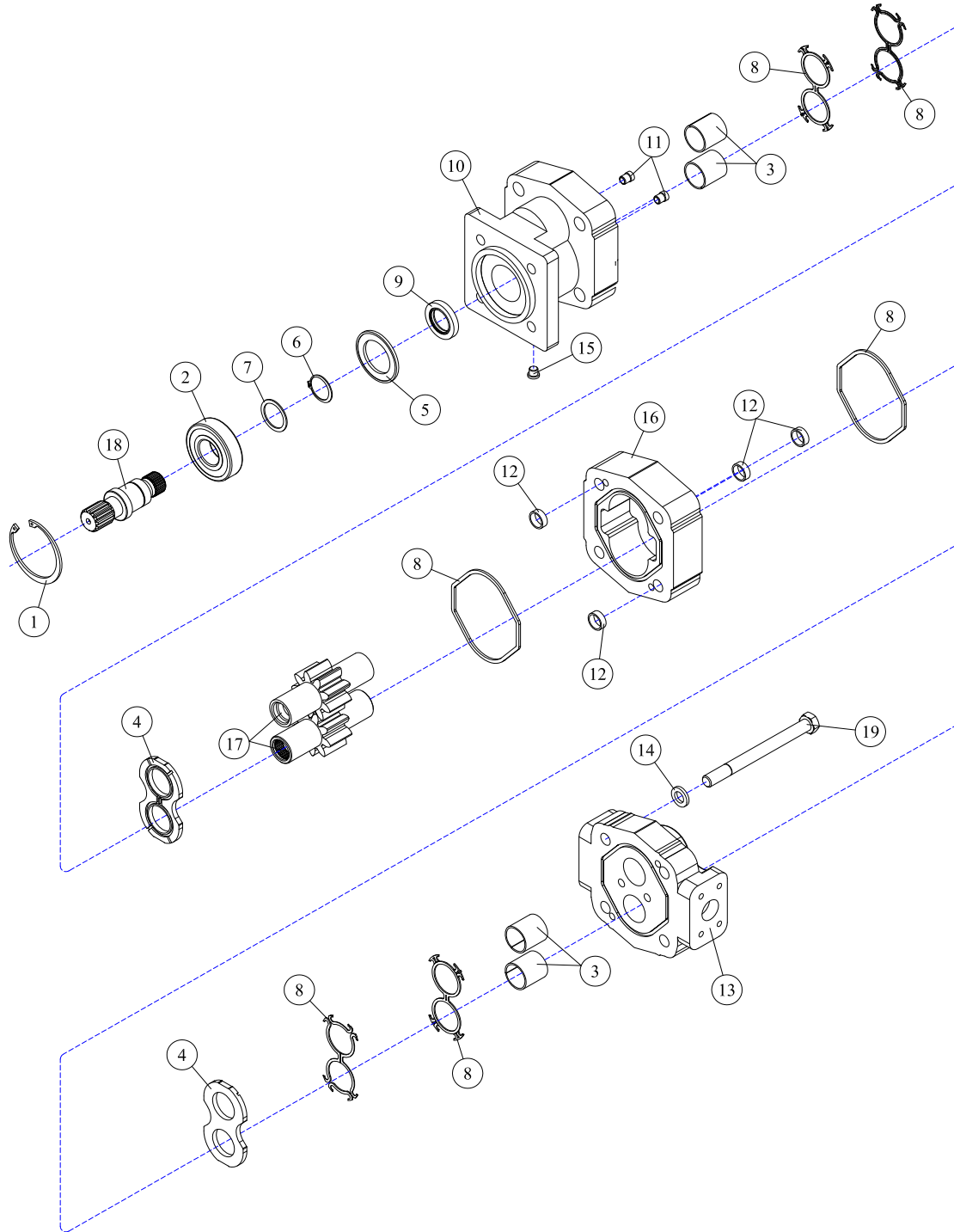
DECK ASSEMBLIES



30-0514 - MOTOR ASSEMBLY

REF#	PARTS DESCRIPTION	REQ	PART #
1	SNAP RING	1	30-1009
2	OUTBOARD BEARING	1	30-1010
3	BUSHING	4	30-1011
4	THRUST PLATE	2	30-1012
5	SEAL RETAINER	1	30-1017
6	RETAINING RING	1	30-1019
7	WASHER	1	30-1020
8	M365 SEAL KIT	Avail	30-1021
9	150 PSI (included in M365 seal kit)	1	30-1210
10	SHAFT END COVER	1	30-1086

REF#	PARTS DESCRIPTION	REQ	PART #
11	CHECK ASSEMBLY	2	30-1087
12	ALIGNMENT BUSHING	4	30-1090
13	PORT END COVER	1	30-1091
14	WASHER	4	30-1093
15	PLUG	1	30-1096
16	GEAR HOUSING	1	30-1140
17	1" GEAR SET	1	30-1141
18	CONTINENTAL SHAFT, SPLINED	1	30-1144
19	STUD	4	Call

30-0532 - MOTOR ASSEMBLY

REF#	PARTS DESCRIPTION	REQ	PART #
1	SNAP RING	1	30-1009
2	OUTBOARD BEARING	1	30-1010
3	BUSHING	4	30-1011
4	THRUST PLATE	2	30-1012
5	SEAL RETAINER	1	30-1017
6	RETAINING RING	1	30-1019
7	WASHER	1	30-1020
8	M365 SEAL KIT	Avail	30-1021
9	150 PSI (included in M365 seal kit)	1	30-1210
10	SHAFT END COVER	1	30-1086

REF#	PARTS DESCRIPTION	REQ	PART #
11	CHECK ASSEMBLY	2	30-1087
12	ALIGNMENT BUSHING	4	30-1090
13	PORT END COVER	1	30-1091
14	WASHER	4	30-1093
15	PLUG	1	30-1096
16	GEAR HOUSING	1	30-1195
17	1-1/4" GEAR SET	1	30-1194
18	CONTINENTAL SHAFT, SPLINED	1	30-1144
19	STUD	4	Call

35-0088 - DIRECT DRIVE SPINDLE

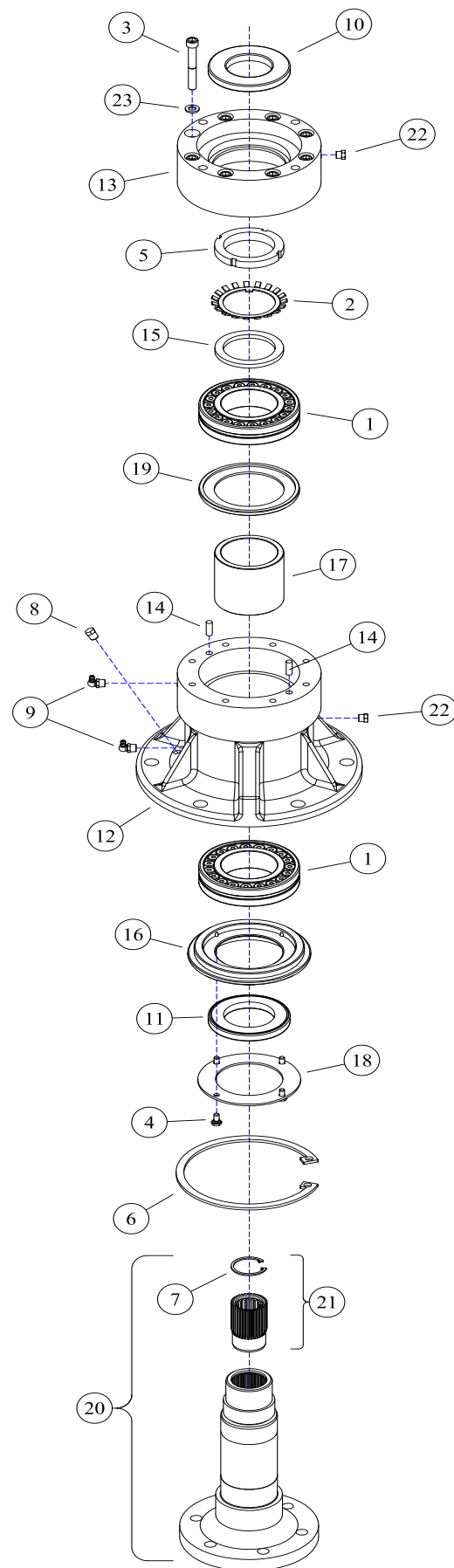
Grease with #2 lithium based grease every 500hrs.
Use 10 pumps (.44oz) into each of the two grease
zerks.

Warning: Do not overgrease

Overgreasing will cause damage or premature failure
of the bearings, housing & seals.

REF#	PARTS DESCRIPTION	REQ	PART #
1	BEARING	2	10-0055
2	LOCKING WASHER	1	11-0048
3	3/8 X 2-3/4 NC SKT HEAD CAPSCREW	8	11-0703
4	1/4 X 1/2 NC CAPSCREW	4	11-0741
5	2-1/2 SPANNER NUT	1	11-1037
6	LARGE SNAP RING	1	11-2021
7	SMALL SNAP RING	1	11-2022
8	PIPE PLUG	1	21-1136
9	1/8 X 90 GREASE ZERK	2	23-0005
10	UPPER SEAL	1	33-0035
11	LOWER SEAL	1	33-0057
12	SPINDLE HOUSING	1	35-0021
13	SEAL/MOTOR MOUNT	1	35-0022
14	ALIGNMENT PIN	2	35-0032
15	SPACER	1	35-0050
16	BOTTOM SEAL PLATE	1	35-0063
17	SPACER	1	35-0064
18	BOTTOM PLATE	1	35-0065
19	GREASE CATCH	1	35-0066
20	SPINDLE SHAFT COMPLETE	1	35-0090
*21	SPLINED INSERT KIT	1	35-0091
22	BREATHER	2	80-1016
23	3/8 LOCK WASHER GR 5	8	11-0005

* The splined insert kit includes the insert removal tool 11-0913.





,





**100% SATISFACTION
GUARANTEE**
★ GET IT, LOVE IT, *or* LEAVE IT! ★

**72-HOUR PARTS
SHIPPING GUARANTEE**