



# PARTS BOOK

## FORESTRY HEADS

• 48" CUT • EXCAVATOR MOUNT •

DIAMOND MOWERS, LLC  
350 E 60<sup>th</sup> St. North  
Sioux Falls, SD 57104

FOR WARRANTY CALL DIAMOND MOWERS DIRECT:  
**888-960-0364**  
OUR TECHNICIANS WILL DIAGNOSE YOUR SITUATION  
OVER THE PHONE TO GET YOU UP AND RUNNING QUICKLY.

Phone: 605-977-3300  
Fax: 605-655-5870  
[www.diamondmowers.com](http://www.diamondmowers.com)

**DEMAND BRILLIANCE.**

© DIAMOND MOWERS, LLC



## Foreword

This manual contains the parts breakdown and identification of the various components and structures that make up your mower implement.

The illustrations, drawings, and diagrams in this manual are based on the latest information available at the time of publication. Your machine may have product improvements and features not yet contained in this parts manual.

Diamond Mowers, LLC reserves the right to make changes at any time without notice or obligation.

Diamond Mowers, LLC™ and Wetblade™ are trademarks of Diamond Mowers, LLC.

This manual should be consulted prior and while assembling the unit, and anytime parts or assembly clarification is needed.

### **Copyright© 2016 Diamond Mowers, LLC**

All rights reserved. While every precaution has been taken in the preparation of this manual, the publisher assumes no responsibility for errors or omissions. No part of this book covered by the copyrights hereon may be reproduced or copied in any form or by any means - graphic, electronic, or mechanical, including photocopying, taping, or information storage and retrieval systems - without written permission of the publisher.



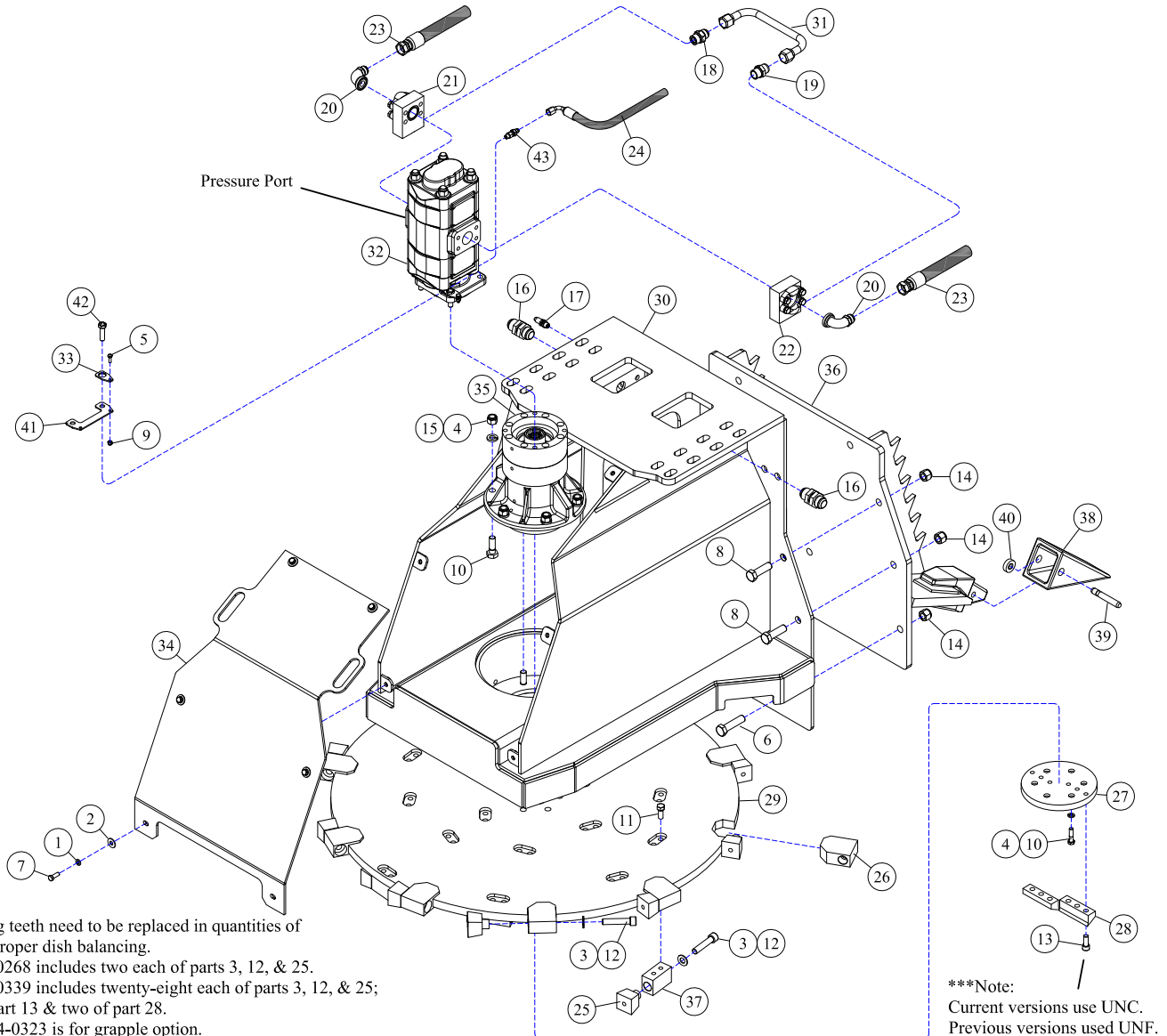
## Table of Contents

<b>FORESTRY HEADS</b> .....	4
FORESTRY HEADS - 48"(1219MM) DIRECT DRIVE .....	5
FORESTRY HEADS - DECAL IDENTIFICATION .....	6
<b>DRIVE ASSEMBLIES</b> .....	7
HOW TO DETERMINE YOUR MOTOR PART NUMBER .....	8
DRIVE ASSEMBLIES - 48"(1219MM), 40-80GPM(152-302LPM) .....	9
<b>DECK ASSEMBLIES</b> .....	10
30-0518 - MOTOR ASSEMBLY .....	11
30-0524 - MOTOR ASSEMBLY .....	12
30-0536 - MOTOR ASSEMBLY .....	13
30-0538 - MOTOR ASSEMBLY .....	14
35-0093 - DIRECT DRIVE SPINDLE .....	15
PRESSURE RELIEF VALVE - 35-0093 DIRECT DRIVE SPINDLE .....	16

# FORESTRY HEADS



## FORESTRY HEADS - 48"(1219MM) DIRECT DRIVE



\* Cutting teeth need to be replaced in quantities of 2 for proper dish balancing.  
 -Kit 44-0268 includes two each of parts 3, 12, & 25.  
 -Kit 44-0339 includes twenty-eight each of parts 3, 12, & 25; six of part 13 & two of part 28.  
 \*\* Kit 44-0323 is for grapple option.

\*\*\*Note:  
 Current versions use UNC.  
 Previous versions used UNF.

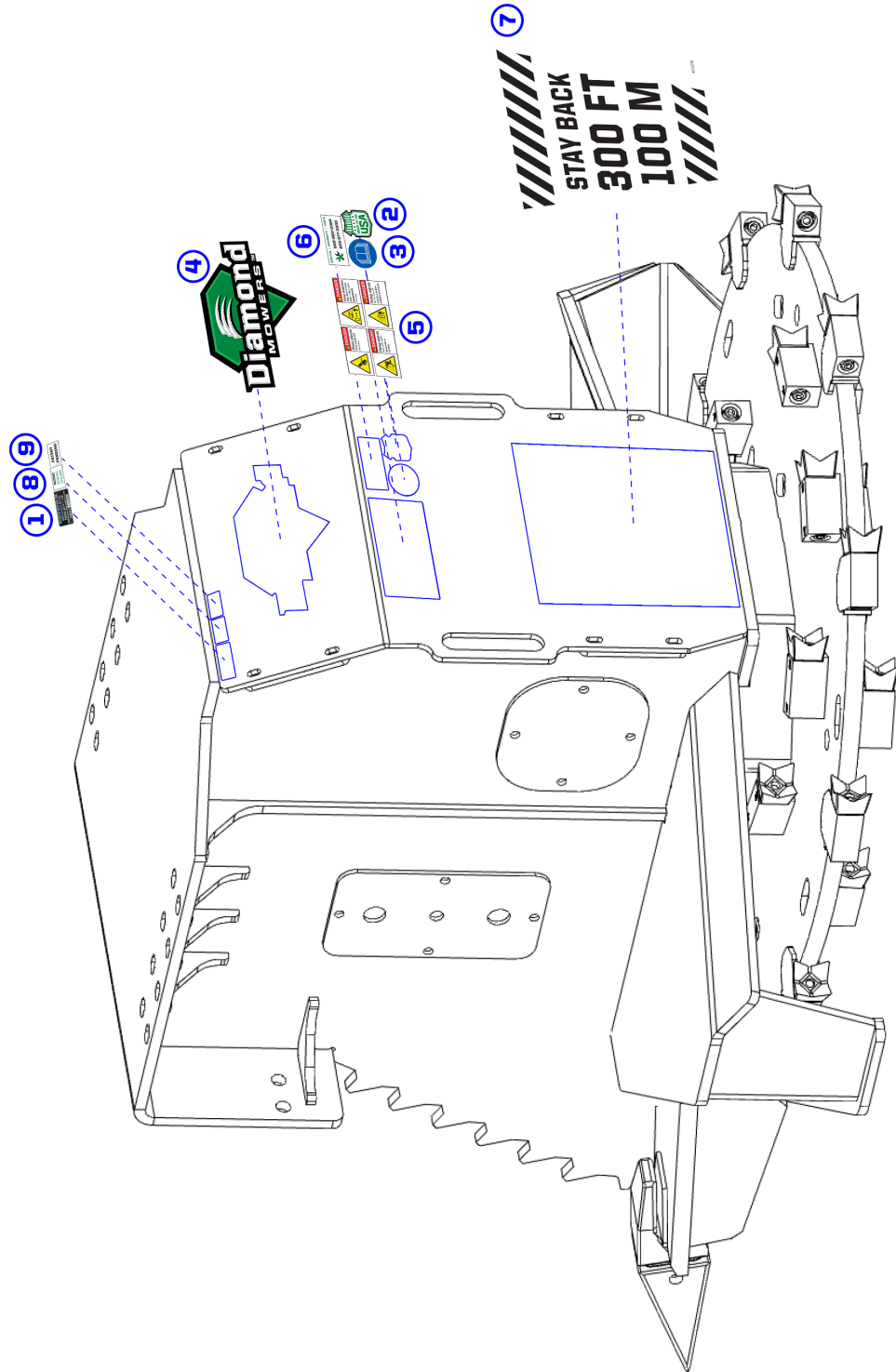
REF#	PARTS DESCRIPTION	REQ	PART #
1	3/8 LOCK WASHER GR 5 CLEAR	6	11-0005
2	3/8 FLAT WASHER GR 5 CLEAR	6	11-0009
3	1/2 SAE FLAT WASHER GR 8 YELLOW	28	11-0042
4	5/8 LOCK WASHER GR 8 YELLOW	12	11-0043
5	1/4 X 3/4 NC HEX CAP	4	11-0588
6	3/4 X 3-1/2 H.S. NC HEX CAP	3	11-0792
7	3/8 X 1-1/4 NC HEX CAP	6	11-0533
8	3/4 X 3 H.S. NC HEX CAPSCREW	6	11-0900
9	1/4 NC NYLOCK NUT	4	11-1022
10	5/8 X 2-1/4 H.S. NF HEX CAP	12	11-0691
11	1/2 X 1 NF HEX CAP GR 5	36	11-0639
12	1/2 X 3 NF SHCS	28	11-0929
13	*** <b>PLANNER BOLTS</b>		
	1/2 X 1-1/4 NC SHCS (current version)	6	11-0965
	1/2 X 1-1/4 NF SHCS (previous version)	6	11-0934
14	3/4 H.S. NC STOVER NUT	9	11-1038
15	5/8 H.S. NF STOVER NUT	6	11-1143
16	1" MJIC X 1" MJIC BULKHEAD ADAPTER	2	21-1283
17	3/8" JIC BULKHEAD ADAPTER	1	21-1581
18	CHECK VALVE	1	21-1474
19	3/4 MORB X 3/4 MJIC, ADAPTER	1	21-1475
20	#20FLG X 1 MJIC 90DEG SWEEP	2	21-1529
21	CROSS OVER MANIFOLD KIT	1	21-2180
22	TEE MANIFOLD KIT	1	21-2181

REF#	PARTS DESCRIPTION	REQ	PART #
23	HOSE 1 X 35 (1FJIC X 1FJIC-90DEG)	2	21-3920
24	HOSE 3/8 X 50 (3/8FJIC X 3/8FJIC-90DEG)	1	21-4293
25	*STEEL CUTTING TOOTH	28	22-0019
26	TOOTH HOLDER	10	P24-0186-12
27	FBC, BOLT PROTECTOR	1	24-0191
28	FBC, CENTER PLANNER	2	24-0192
29	<b>48" FORESTRY BRUSH CUTTER</b>		
	WITHOUT TEETH	1	24-0242
	WITH TEETH	1	24-0244
30	48" FORESTRY BRUSH CUTTER DECK	1	25-0186
31	RUN-AROUND TUBE	1	28-0051
32	TANDEM GEAR MOTOR 400 SERIES	1	30-0536
33	MOTOR BOLT LOCK TAB	4	31-0503
34	48" FORESTRY BRUSH CUTTER COVER	1	31-0435
35	SPINDLE ASSEMBLY - SPLINE	1	35-0088
36	**FBC, GRAPPLE ADAPTER	1	49-0073
37	TOOTH HOLDER	18	90-7034
38	BUCKET TOOTH	3	3000-21
39	PIN	3	3000-22
40	RETAINER WASHER	3	3000-23
41	MOTOR BOLT LOCK BASE	2	31-0504
42	1/2-20 X 1-3/4 H.S. NF HEX CAP GR.8	4	11-0664
43	ADAPTER, 1/4MOR X 3/8MJIC	1	21-1597

**FORESTRY HEADS - DECAL IDENTIFICATION**

080718

- ① SERIAL NUMBER LABEL - (not included in kit) - QTY 1
- ② PART #15-0055 - Made In USA - QTY 1
- ③ PART #15-0058 - Read Manual - QTY 1
- ④ PART #15-0052 - Diamond Mowers Logo II" - QTY 1
- ⑤ PART #15-0057 - Decal Group Horizontal - QTY 1
- ⑥ PART #15-1016 - Warranty - QTY 1
- ⑦ PART #15-0060 - Stay Back 300/100m - QTY 1
- ⑧ PART #15-0064 - Patent Forestry 2 - QTY 1
- ⑨ PART #15-0067 - Patent Pending - QTY 1



# DRIVE ASSEMBLIES

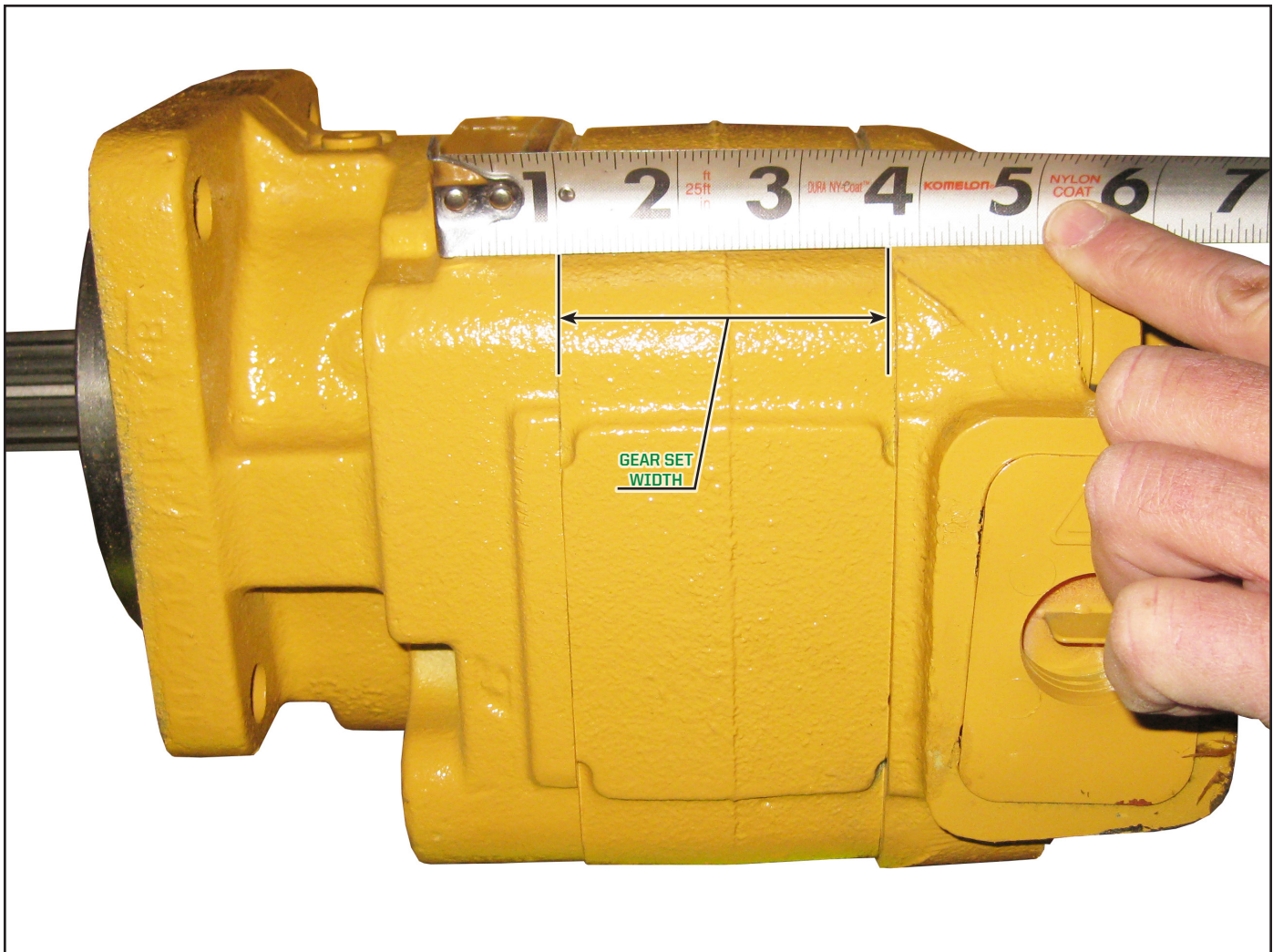




## HOW TO DETERMINE YOUR MOTOR PART NUMBER

**Note:** The following parts pages in the **DRIVE ASSEMBLIES** section have multiple motor options; to identify which motor you have, follow the instructions below: you will have to first determine your vehicles hydraulic oil GPM requirements (i.e. 16-41gpm).

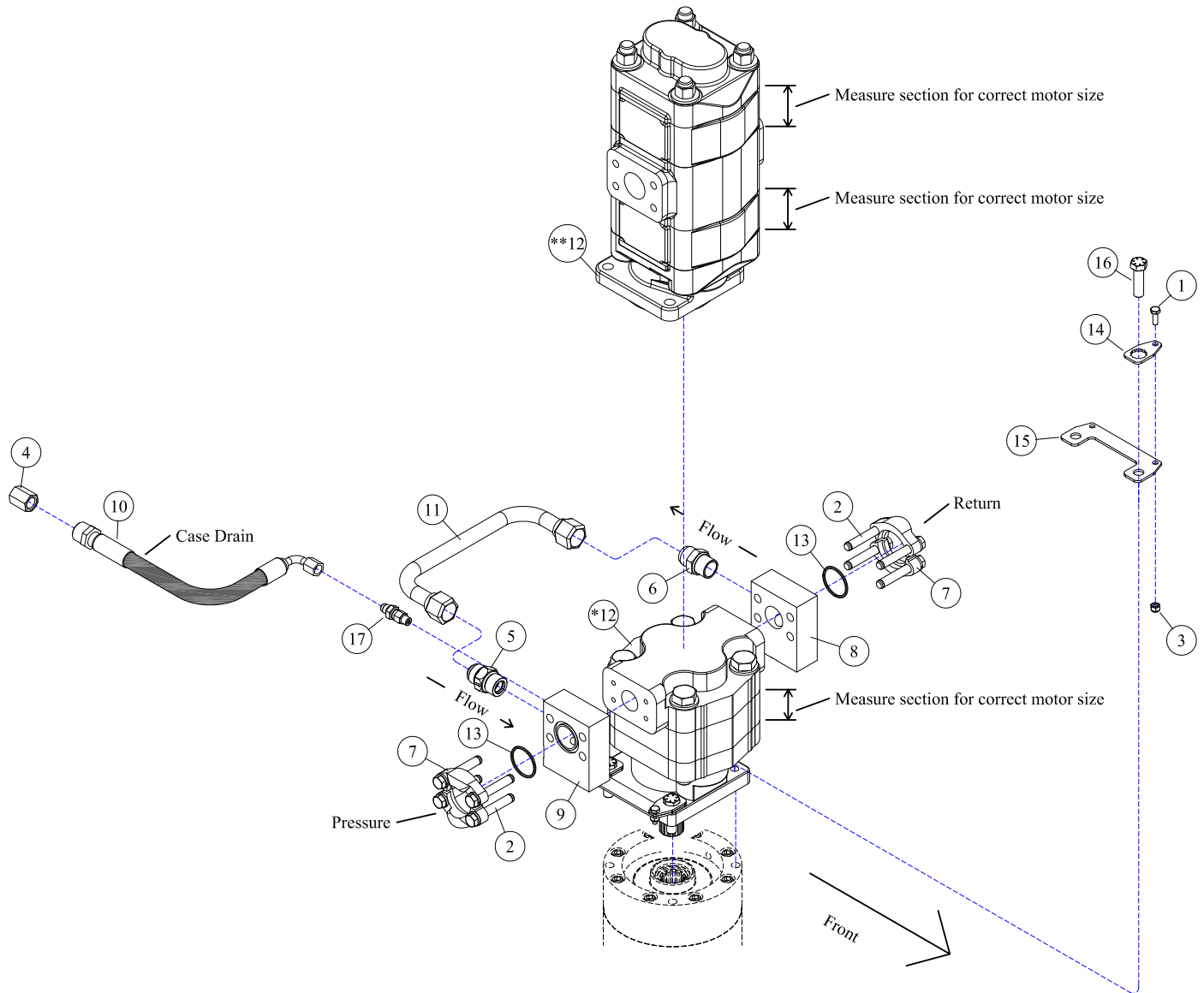
- ▷ Determine what your hydraulic oil flow requirements are for your vehicle in gallons per minute (GPM).
- ▷ Locate the **Drive Assemblies** page in the table of contents in the front of this manual that has a GPM range consistent with your vehicle's GPM requirements, and go to that page. Locate your motor part number.
- ▷ If multiple motor options and part numbers are available on your parts page, measure the width of the gear section of your motor to determine which part number is correct for your motor. Measure the gear section shown in the illustration below *[see Figure 1]*.



Motor - (Figure 1)



## DRIVE ASSEMBLIES - 48" (1219MM), 40-80GPM (152-302LPM)

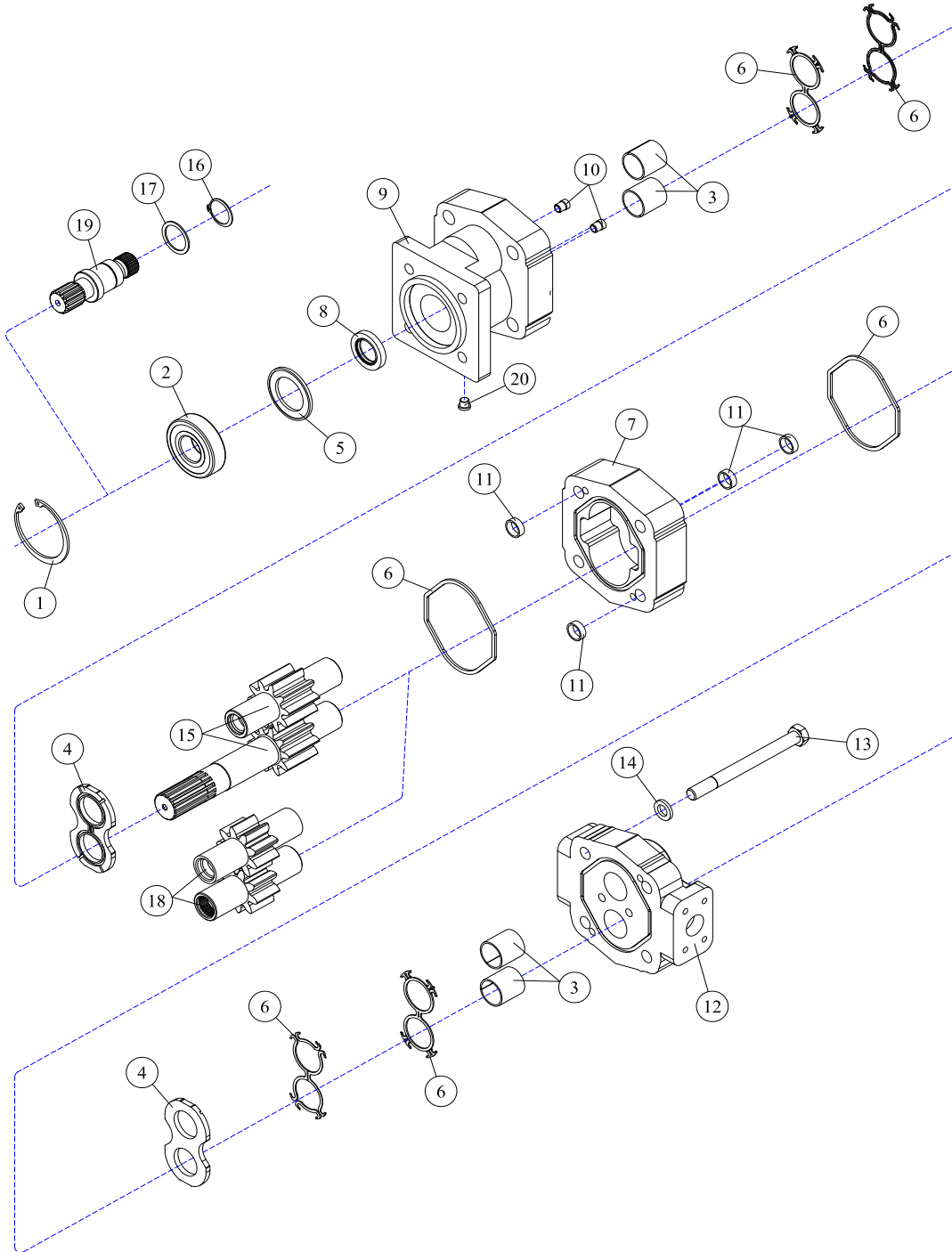


REF#	PARTS DESCRIPTION	REQ	PART #
1	1/4 X 3/4 NC HEX CAP	4	11-0588
2	7/16 X 3 NC HEX CAPSCREW (included with #8 & 9)	4	11-0587
3	1/4 NC NYLOCK NUT	4	11-1022
4	3/8FJIC CAP NUT	1	21-1582
5	CHECK VALVE	1	21-1474
6	3/4 MORB X 3/4 MJIC ADAPTER	1	21-1475
7	#20 FLANGE KIT (included with #8 & 9)	2	21-2105
8	CROSS OVER MANIFOLD KIT (includes #2,7 & 13)	1	21-2180
9	TEE MANIFOLD KIT (includes #2,7 & 13)	1	21-2181
10	HOSE 3/8 X 50 (3/8FJIC X 3/8FJIC-90DEG)	1	21-4293
11	RUN-AROUND TUBE	1	28-0051
12	<b>MOTOR</b>		
*	M365, 2-1/4" GEAR SET, 2-3/4" SECT, 40-50 GAL/MIN	1	30-0524
*	M365, 2-1/2" GEAR SET, 3" SECT, 50-58 GAL/MIN	1	30-0518
**	TANDEM GEAR, M365, 1" GEAR SETS, 1-1/2" SECT, 59-67 GAL/MIN	1	30-0538
**	TANDEM GEAR, M365, 1-1/2" GEAR SETS, 2" SECT, 68-80 GAL/MIN	1	30-0536
13	O-RING (included with #7, 8 & 9)	2	33-0013
14	MOTOR BOLT LOCK TAB	4	31-0503
15	MOTOR BOLT LOCK BASE	2	31-0504
16	1/2-20 X 1-3/4 H.S. NF HEX CAP GR.8	4	11-0664
17	ADAPTER, 1/4MOR X 3/8MJIC	1	21-1597

# DECK ASSEMBLIES



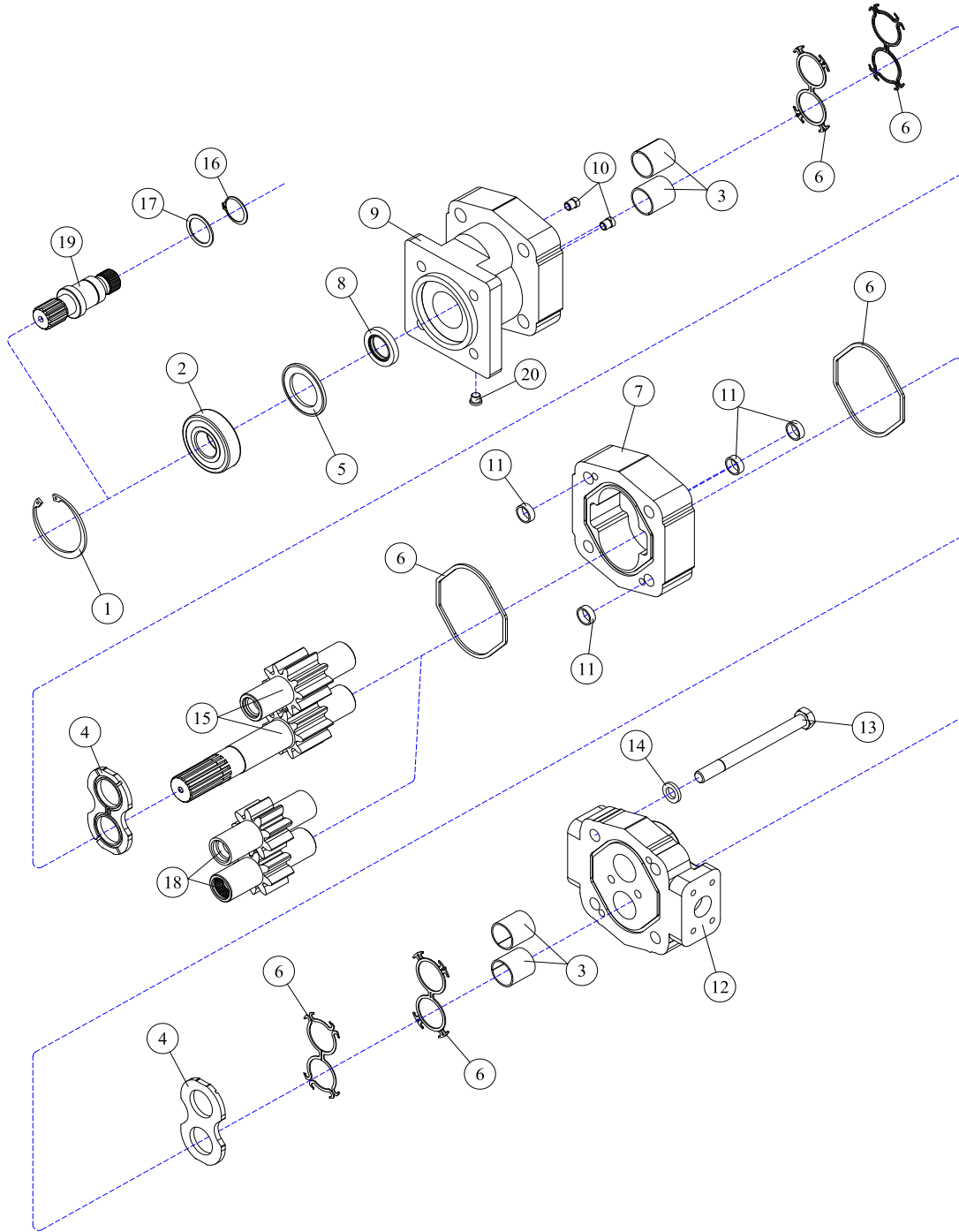
**30-0518 - MOTOR ASSEMBLY**



REF#	PARTS DESCRIPTION	REQ	PART #
1	SNAP RING	1	30-1009
2	OUTBOARD BEARING	1	30-1010
3	BUSHING	4	30-1011
4	THRUST PLATE	2	30-1012
5	SEAL RETAINER	1	30-1017
6	M365 SEAL KIT	Avail	30-1021
7	2-1/2" M365 GEAR HOUSING	1	30-1137
8	<b>SHAFT SEAL</b>		
	150 PSI (included in M365 seal kit)	1	30-1210
	500 PSI	1	30-1156
9	SHAFT END COVER	1	30-1086
10	CHECK ASSEMBLY	2	30-1087
11	ALIGNMENT BUSHING	4	30-1090

REF#	PARTS DESCRIPTION	REQ	PART #
12	PORT END COVER	1	30-1091
13	STUD	4	30-1334
14	WASHER	4	30-1093
	<b>GEAR SET OPTION A:</b>		
15	2-1/2" GEAR SET	1	30-1170
	<b>GEAR SET OPTION B:</b>		
16	RETAINING RING	1	30-1019
17	WASHER	1	30-1020
18	2-1/2" GEAR SET	1	30-1136
19	CONTINENTAL SHAFT, SPLINED	1	30-1144
20	PLUG	1	30-1096
*	SEAL APPLICATOR TOOL (not shown)	Avail	30-1048

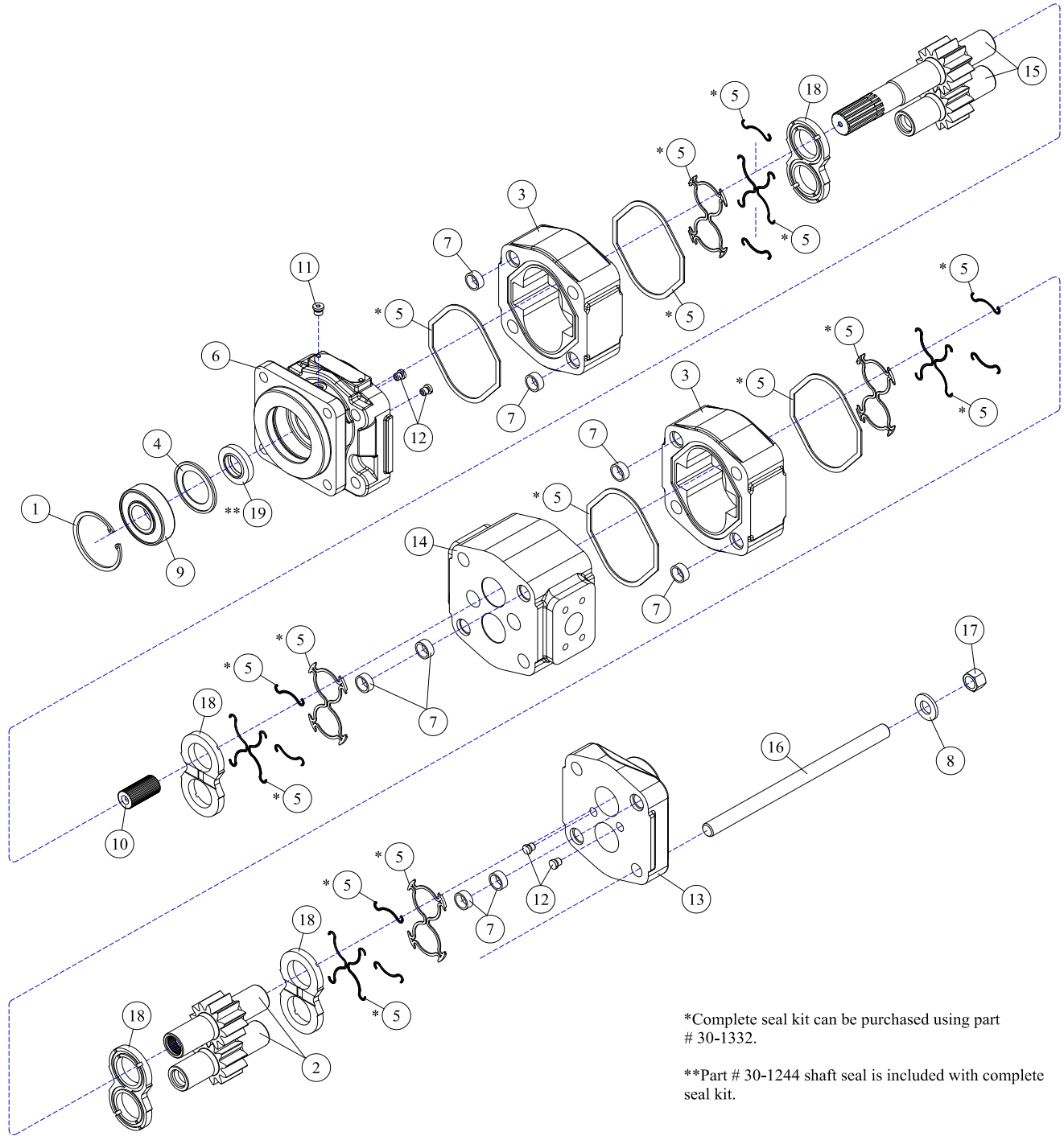
30-0524 - MOTOR ASSEMBLY



REF#	PARTS DESCRIPTION	REQ	PART #
1	SNAP RING	1	30-1009
2	OUTBOARD BEARING	1	30-1010
3	BUSHING	4	30-1011
4	THRUST PLATE	2	30-1012
5	SEAL RETAINER	1	30-1017
6	M365 SEAL KIT	Avail	30-1021
7	2-1/4" M365 GEAR HOUSING	1	30-1026
8	<b>SHAFT SEAL</b>		
	150 PSI (included in M365 seal kit)	1	30-1210
	500 PSI	1	30-1156
9	SHAFT END COVER	1	30-1086
10	CHECK ASSEMBLY	2	30-1087
11	ALIGNMENT BUSHING	4	30-1090

REF#	PARTS DESCRIPTION	REQ	PART #
12	PORT END COVER	1	30-1091
13	STUD	4	Call
14	WASHER	4	30-1093
	<b>GEAR SET OPTION A:</b>		
15	2-1/4" GEAR SET	1	30-1165
	<b>GEAR SET OPTION B:</b>		
16	RETAINING RING	1	30-1019
17	WASHER	1	30-1020
18	2-1/4" GEAR SET	1	30-1025
19	CONTINENTAL SHAFT, SPLINED	1	30-1144
20	PLUG	1	30-1096
*	SEAL APPLICATOR TOOL (not shown)	Avail	30-1048

**30-0536 - MOTOR ASSEMBLY**



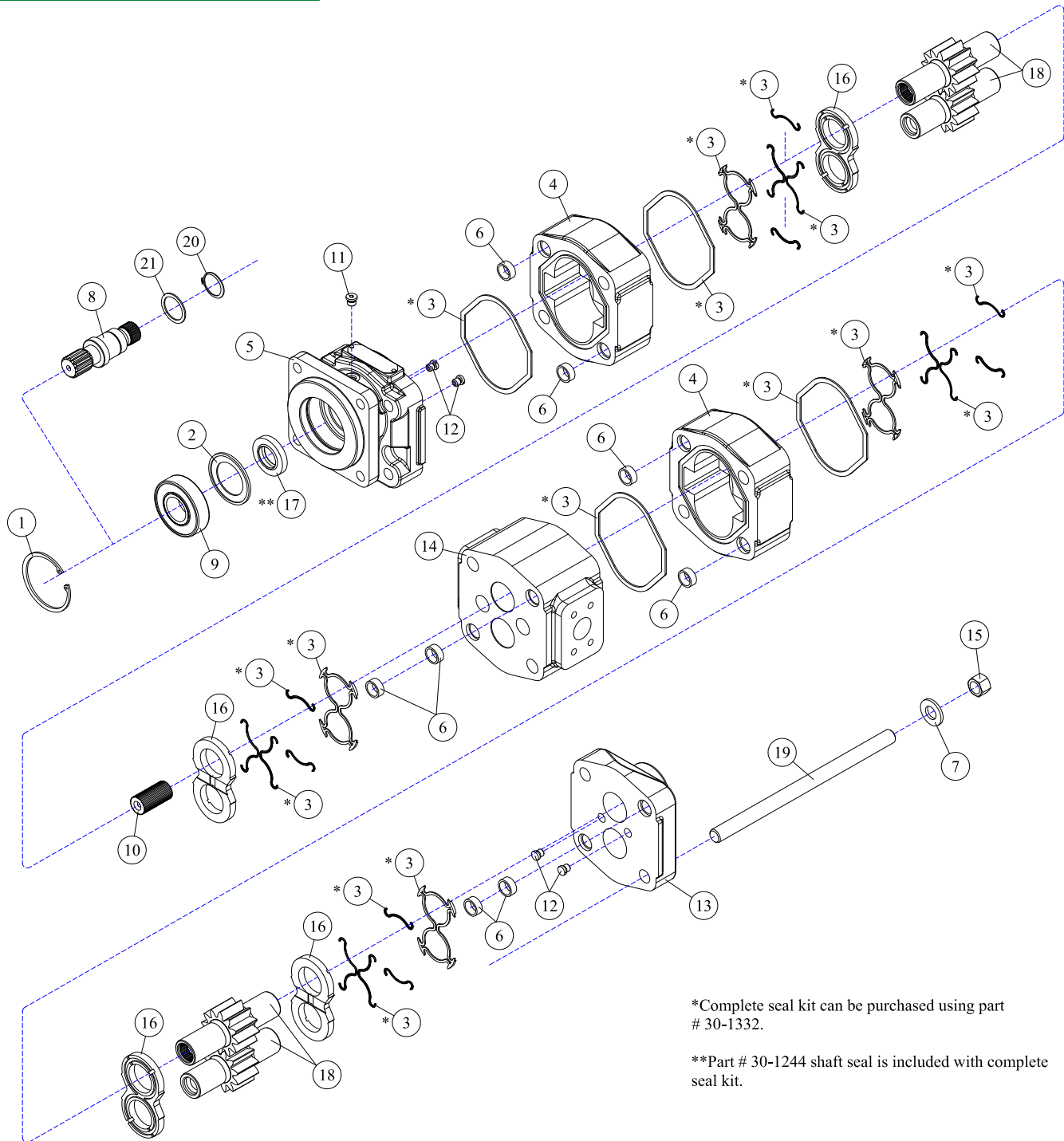
\*Complete seal kit can be purchased using part # 30-1332.

\*\*Part # 30-1244 shaft seal is included with complete seal kit.

REF#	PARTS DESCRIPTION	REQ	PART #
1	SNAP RING	1	30-1009
2	GEAR SET	1	30-1014
3	GEAR HOUSING	2	30-1016
4	SEAL RETAINER	1	30-1017
5	*SEAL KIT (also includes 30-1244)	Avail	30-1332
6	SHAFT END COVER HOUSING	1	30-1075
7	DOWEL PIN	8	30-1090
8	WASHER	4	30-1093
9	BALL BEARING	1	30-1173
10	CONNECTOR SHAFT	1	30-1176

REF#	PARTS DESCRIPTION	REQ	PART #
11	PLUG	1	30-1220
12	CHECK ASSEMBLY	4	30-1228
13	PORT END COVER HOUSING	1	30-1231
14	BEARING CARRIER HOUSING	1	30-1233
15	SET, GEAR SHAFT	1	30-1235
16	STUD	4	30-1238
17	HEX NUT	4	30-1239
18	THRUST PLATE	4	30-1241
19	**SHAFT SEAL	1	30-1244
***	SEAL APPLICATOR TOOL (not shown)	Avail	30-1048

**30-0538 - MOTOR ASSEMBLY**



\*Complete seal kit can be purchased using part # 30-1332.

\*\*Part # 30-1244 shaft seal is included with complete seal kit.

REF#	PARTS DESCRIPTION	REQ	PART #
1	SNAP RING	1	30-1009
2	SEAL RETAINER	1	30-1017
3	*SEAL KIT (also includes 30-1244)	Avail	30-1332
4	GEAR HOUSING	2	30-1023
5	SHAFT END COVER HOUSING	1	30-1075
6	DOWEL PIN	8	30-1090
7	WASHER	4	30-1093
8	CONTINENTAL SHAFT	1	30-1144
9	BALL BEARING	1	30-1173
10	CONNECTOR SHAFT	1	30-1176
11	PLUG	1	30-1220

REF#	PARTS DESCRIPTION	REQ	PART #
12	CHECK ASSEMBLY	4	30-1228
13	PORT END COVER HOUSING	1	30-1231
14	BEARING CARRIER HOUSING	1	30-1233
15	HEX NUT	4	30-1239
16	THRUST PLATE	4	30-1241
17	**SHAFT SEAL	1	30-1244
18	GEAR SET	2	30-1251
19	STUD	4	30-1253
20	RETAINING RING	1	30-1019
21	WASHER	1	30-1020



**35-0093 - DIRECT DRIVE SPINDLE**

REF#	PARTS DESCRIPTION	REQ	PART #
1	BEARING-CONE (TOP)	1	10-0094
2	BEARING-CUP (TOP)	1	10-0095
3	BEARING-CONE (BOTTOM)	1	10-0096
4	BEARING-CUP (BOTTOM)	1	10-0097
5	BOLT-HEX HEAD	24	11-1611
6	WASHER-FLAT	24	11-1612
7	RING-RETAINING	1	11-1613
8	NUT-LOCK	1	11-1614
9	WASHER-LOCK	1	11-1615
10	SCREW-SKT HD CAP	6	11-1616
11	PIPE PLUG (TO COVER) (MAGNETIC)	1	21-1609
12	PIPE PLUG (TO COVER) (NON-MAGNETIC)	1	21-1610
13	PIPE PLUG (TO HUB) (MAGNETIC)	2	21-1611
14	WASHER-THRUST (TOP)	1	35-0096
15	COUPLING	1	35-0097
16	PLATE-KEEPER	1	35-0098
17	WASHER-THRUST (BOTTOM)	1	35-0099
**18	HUB	1	35-0100
19	SEAL-OIL	1	35-0101
*20	GUARD	1	35-0102
**21	SHAFT-OUTPUT	1	35-0103
22	<b>COVER</b>		
	C BASE (STANDARD)	1	35-0094
	D BASE (OPTIONAL)	1	35-0095

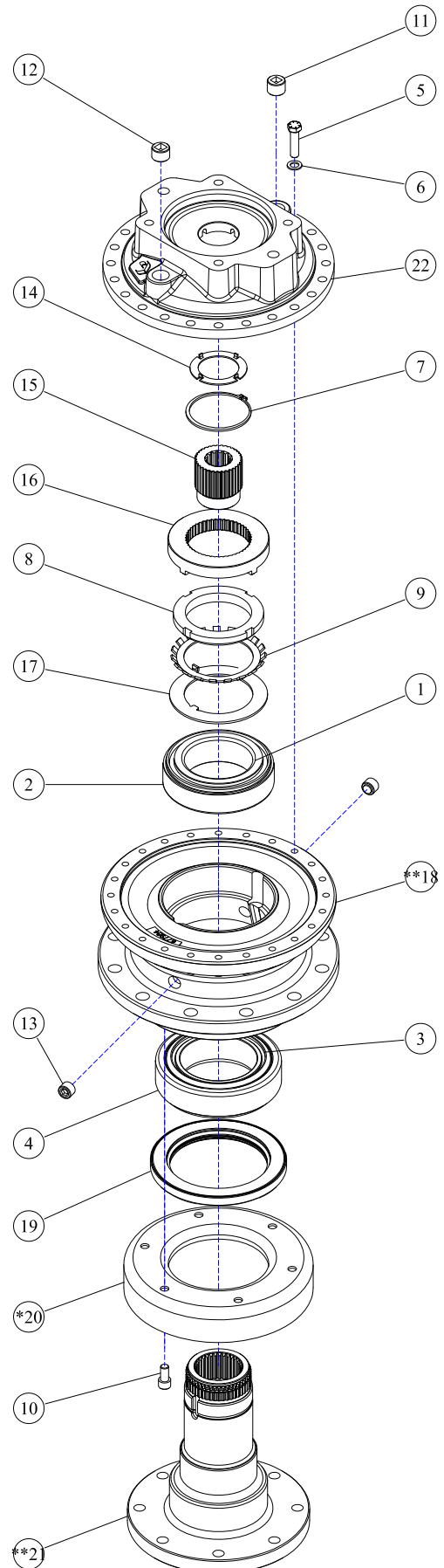
NOTE: WHEN ORDERING ANY ITEMS MARKED \* ABOVE, ALSO ORDER SERVICE KIT 33-0078

NOTE: WHEN ORDERING ANY ITEMS MARKED \*\* ABOVE, ALSO ORDER SERVICE KIT 33-0079

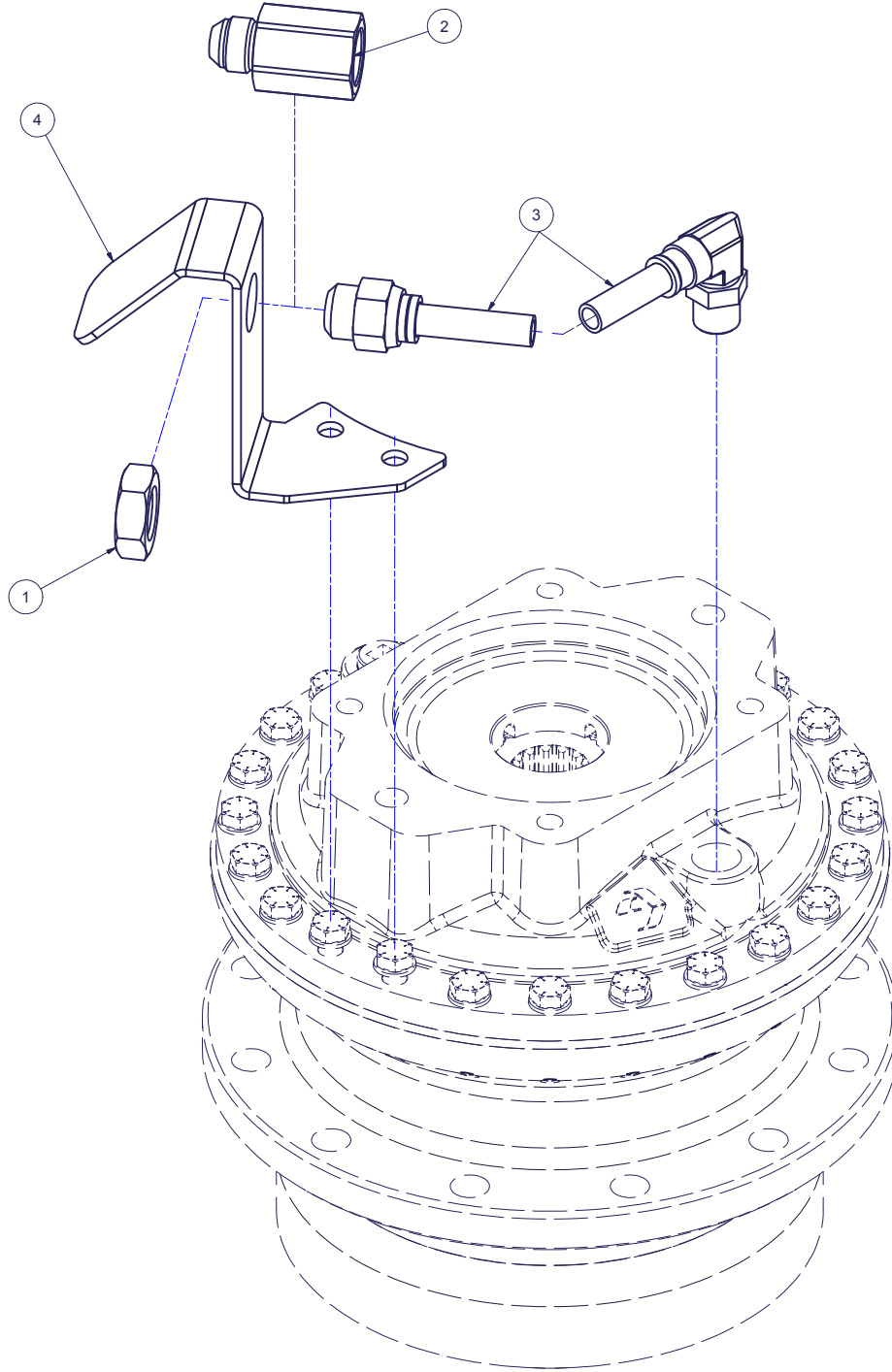
SERVICE KITS

PART #	DESCRIPTION	INCLUDED ITEMS
33-0078	SEAL KIT	9, 19
33-0079	BEARING & SEAL KIT	1, 2, 3, 4, 9, 19
33-0080	COUPLER KIT	14, 15

KITS ALSO INCLUDE A TUBE OF SEALANT PART NO. 35-0104



**PRESSURE RELIEF VALVE - 35-0093 DIRECT DRIVE SPINDLE**



REF#	PARTS DESCRIPTION	REQ	PART#	TORQUE (ft-lbs)	TORQUE (Nm)
1	7/8 UNF JAM NUT	1	11-1159		
2	JEMTEC D3 SPINDLE RELIEF VALVE	1	21-1653		
3	HOSE 1/2 X 8 (5/8 JIC - 1/2 MP 90 DEG SWIVEL)	1	21-2419		
4	D3 RELIEF VALVE MOUNT	1	31-0688		



**100% SATISFACTION  
GUARANTEE**  
★ GET IT, LOVE IT, *or* LEAVE IT! ★

**72-HOUR PARTS  
SHIPPING GUARANTEE**