



# PARTS BOOK

## SKID-STEER FORESTRY HEADS

• 1524mm CUT • SERIAL #24700+ •

DIAMOND MOWERS, LLC  
350 E 60<sup>th</sup> St. North  
Sioux Falls, SD 57104

FOR WARRANTY CALL DIAMOND MOWERS DIRECT:  
**888-960-0364**  
OUR TECHNICIANS WILL DIAGNOSE YOUR SITUATION  
OVER THE PHONE TO GET YOU UP AND RUNNING QUICKLY.

Phone: 605-977-3300  
Fax: 605-655-5870  
[www.diamondmowers.com](http://www.diamondmowers.com)

**DEMAND BRILLIANCE.**

© DIAMOND MOWERS, LLC



## Foreword

This manual contains the parts breakdown and identification of the various components and structures that make up your mower implement.

The illustrations, drawings, and diagrams in this manual are based on the latest information available at the time of publication. Your machine may have product improvements and features not yet contained in this parts manual.

Diamond Mowers, LLC reserves the right to make changes at any time without notice or obligation.

Diamond Mowers, LLC™ and Wetblade™ are trademarks of Diamond Mowers, LLC.

This manual should be consulted prior and while assembling the unit, and anytime parts or assembly clarification is needed.

### Copyright© 2016 Diamond Mowers, LLC

All rights reserved. While every precaution has been taken in the preparation of this manual, the publisher assumes no responsibility for errors or omissions. No part of this book covered by the copyrights heron may be reproduced or copied in any form or by any means – graphic, electronic, or mechanical, including photocopying, taping, or information storage and retrieval systems – without written permission of the publisher.



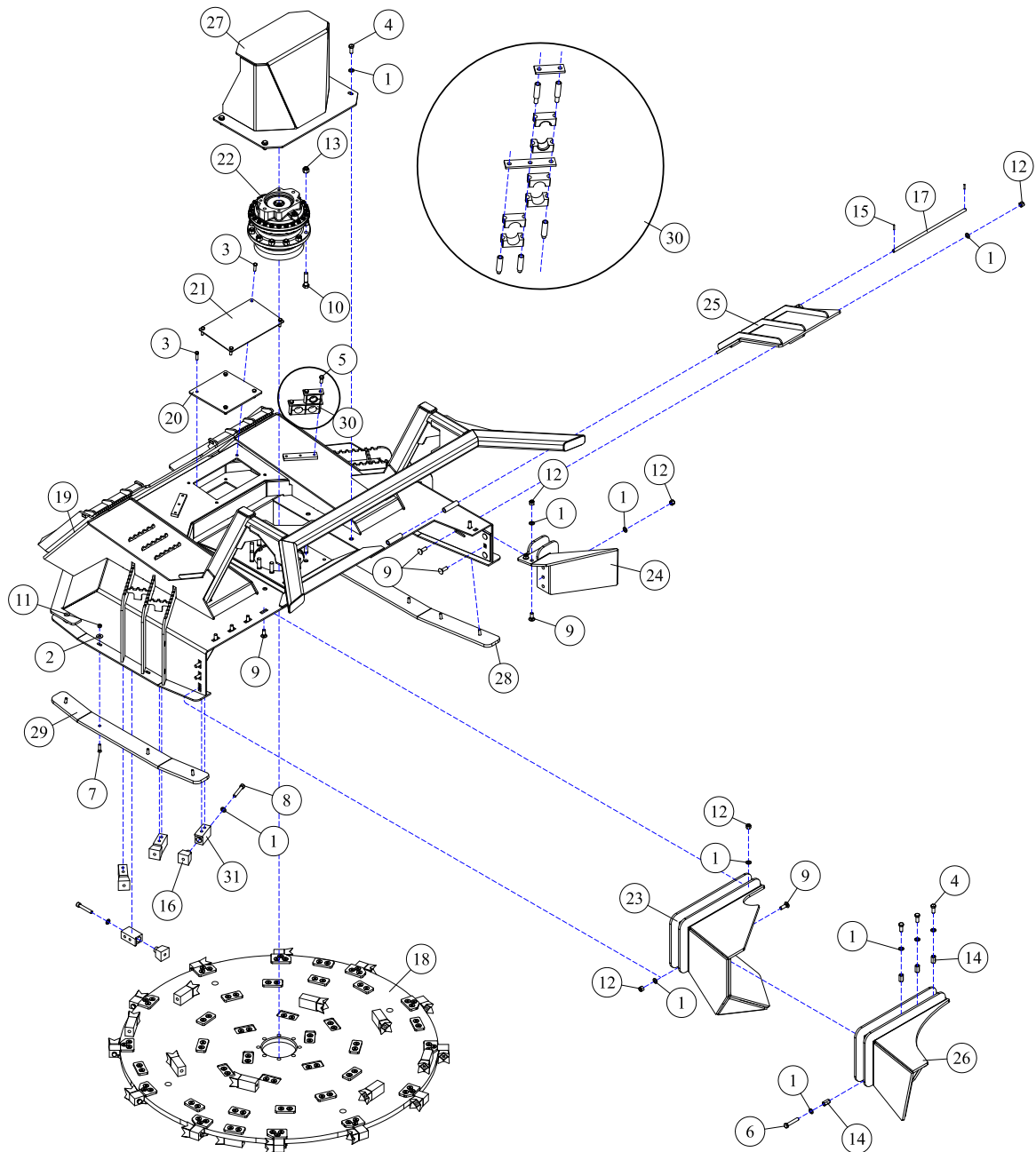
## Table of Contents

<b>FORESTRY HEADS</b> .....	4
FORESTRY HEADS - 60"(1524mm) DECK, DIRECT DRIVE.....	5
FORESTRY HEADS - DECAL IDENTIFICATION.....	7
<b>DRIVE ASSEMBLIES</b> .....	8
DRIVE ASSEMBLIES - 60"(1524mm), 32-45GPM(122-170LPM).....	9
<b>DECK ASSEMBLIES</b> .....	10
30-0524 - MOTOR ASSEMBLY.....	11
35-0093 - DIRECT DRIVE SPINDLE .....	12
PRESSURE RELIEF VALVE - 35-0093 DIRECT DRIVE SPINDLE .....	13
39-0123 - VALVE ASSEMBLY.....	14

# FORESTRY HEADS



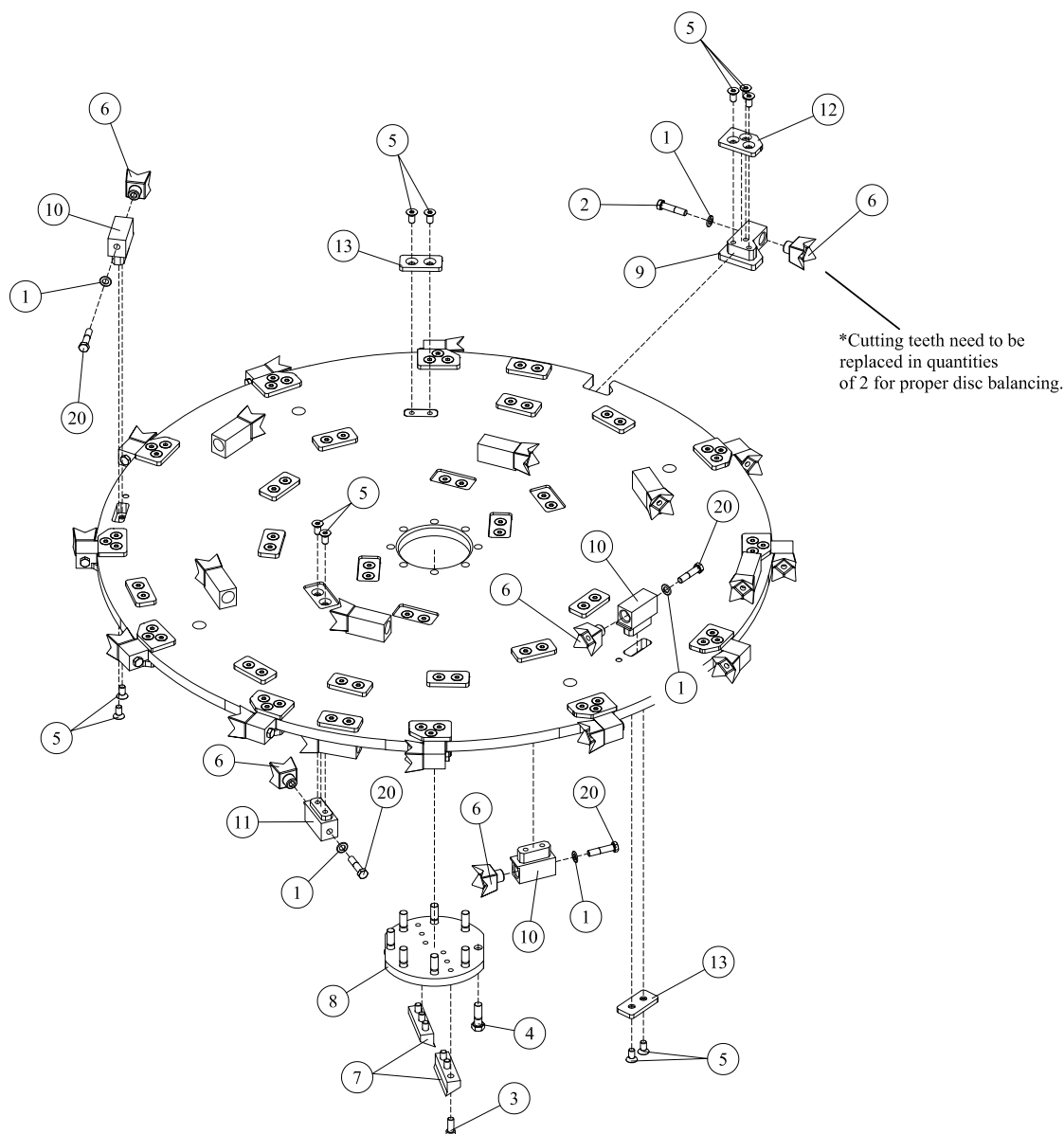
## FORESTRY HEADS - 60"(1524mm) DECK, DIRECT DRIVE



REF#	PARTS DESCRIPTION	REQ	PART #
1	1/2 SAE FLAT WASHER GR 8	25	11-0042
2	3/8 FLAT WASHER GR 8	9	11-0092
3	3/8 X 1 NC HEX CAPSCREW	8	11-0532
4	1/2 X 1-1/4 NC HEX CAP	7	11-0570
5	7/16 X 1 NC HEX CAPSCREW	3	11-0584
6	1/2 X 2-3/4 NC HEX CAP, GR 5	1	11-0636
7	3/8 X 1-1/4 NC PLOW BOLT	9	11-0804
8	1/2 X 3 NF SHCS	4	11-0929
9	1/2 X 1-3/4 NC CARRIAGE BOLT GR 8	13	11-0961
10	5/8 X 2-1/2 NC HEX CAPSCREW, GR 8	12	11-0971
11	3/8 NC HEX NUT	9	11-1001
12	1/2 NC NYLOCK NUT GR 8	13	11-1072
13	5/8 NC NYLOCK NUT GR 8	12	11-1073
14	1/2 X 1-1/4 NC COUPLING NUT	4	11-1077
15	ROLL PIN, 5/32 X 1	2	11-2054
16	FORESTRY TOOTH, STEEL	4	22-0019

REF#	PARTS DESCRIPTION	REQ	PART #
17	DEFLECTOR HINGE ROD	1	24-0213
18	WELD FREE D3 DISC COMPLETE	1	24-0283
19	SKID DECK	1	25-0204
20	LOWER ACCESS PORT COVER	1	31-0455
21	UPPER ACCESS PORT COVER	1	31-0537
22	SPINDLE ASSEMBLY	1	35-0093
23	NARROW CHUTE	1	41-1302
24	LEFT CHUTE	1	41-1303
25	DEBRIS DEFLECTOR	1	41-1305
26	WIDE CHUTE	1	41-1307
27	MOTOR GUARD	1	41-1461
28	LEFT SKID SHOE	1	42-0048
29	RIGHT SKID SHOE	1	42-0049
30	HOSE CLAMP	1	44-0351
31	FBC TOOTH HOLDER INSIDE	4	90-7035

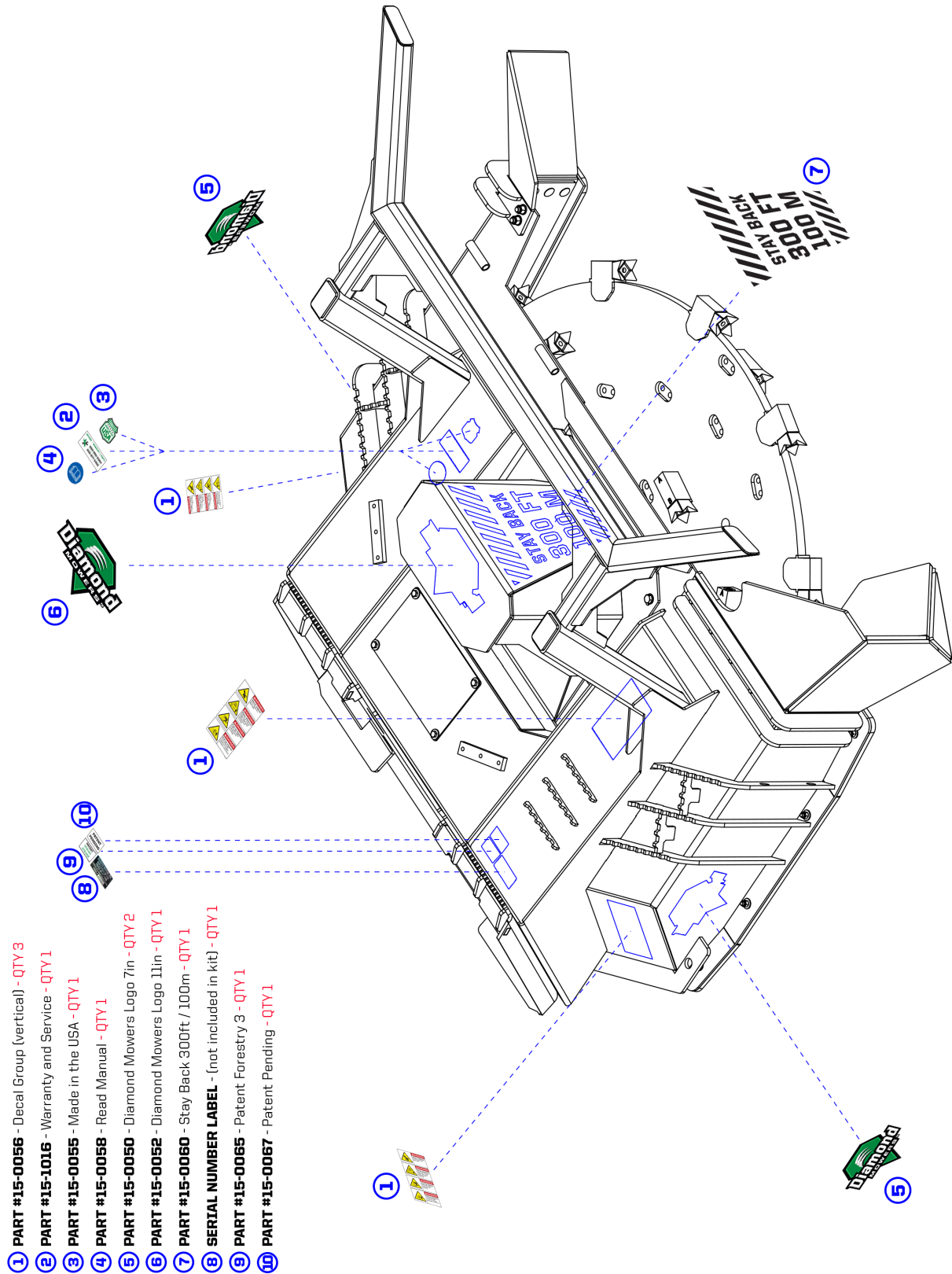
## FORESTRY HEADS - 60"(1524mm) DECK, DIRECT DRIVE



REF#	PARTS DESCRIPTION	REQ	PART #
1	1/2 SAE FLAT WASHER GR 8	44	11-0042
2	1/2 X 2-1/4 H.S. NF HEX CAP	12	11-0660
3	1/2 X 1-1/4 NC SHCS	6	11-0965
4	5/8 X 2 NC HEX CAPSCREW, GR 8	8	11-0970
5	1/2 X 1 FSHCS NC	100	11-1158
6	*FORESTRY TOOTH, STEEL	44	22-0019
7	FBC, CENTER PLANER	2	24-0192
8	FBS, BOLT PROTECTOR	1	24-0224
9	OUTER TOOTH HOLDER	12	90-7054
10	MIDDLE TOOTH HOLDER	24	90-7073
11	INNER TOOTH HOLDER	8	90-7074
12	OUTER TOOTH HOLDER COVER	12	P24-0270-12
13	COVER	32	P24-0270-13
14	<b>TOOTH KIT</b>		
	Includes 20 of part 6	1	44-0830
	Includes 50 of part 6	1	44-0831
15	<b>PLANER KIT</b>		
	Includes 6 of part 3	1	44-0853
	Includes 2 of part 7	1	44-0853

REF#	PARTS DESCRIPTION	REQ	PART #
16	LOCTITE 277, 10ML (NOT SHOWN)	1	24-0309
	To be used with parts 9, 10, & 11.		
17	<b>OUTER TOOTH HOLDER KIT</b>		
	Includes 3 of part 5	1	44-0835
	Includes 1 each of parts 9, 12, & 16	1	44-0835
18	<b>MIDDLE TOOTH HOLDER KIT</b>		
	Includes 2 of part 5	1	44-0862
	Includes 1 each of parts 10, 13, & 16	1	44-0862
19	<b>INNER TOOTH HOLDER KIT</b>		
	Includes 2 of part 5	1	44-0863
	Includes 1 each of parts 11, 13, & 16	1	44-0863
20	1/2 X 3-1/2 NF HEX CAP, GR 8	32	11-1628
21	<b>COMPLETE TOOTH KIT</b>		
	Includes 48 of part 1	1	44-0861
	Includes 12 of part 2	1	44-0861
	Includes 48 of part 6	1	44-0861
	Includes 36 of part 20	1	44-0861

## FORESTRY HEADS - DECAL IDENTIFICATION

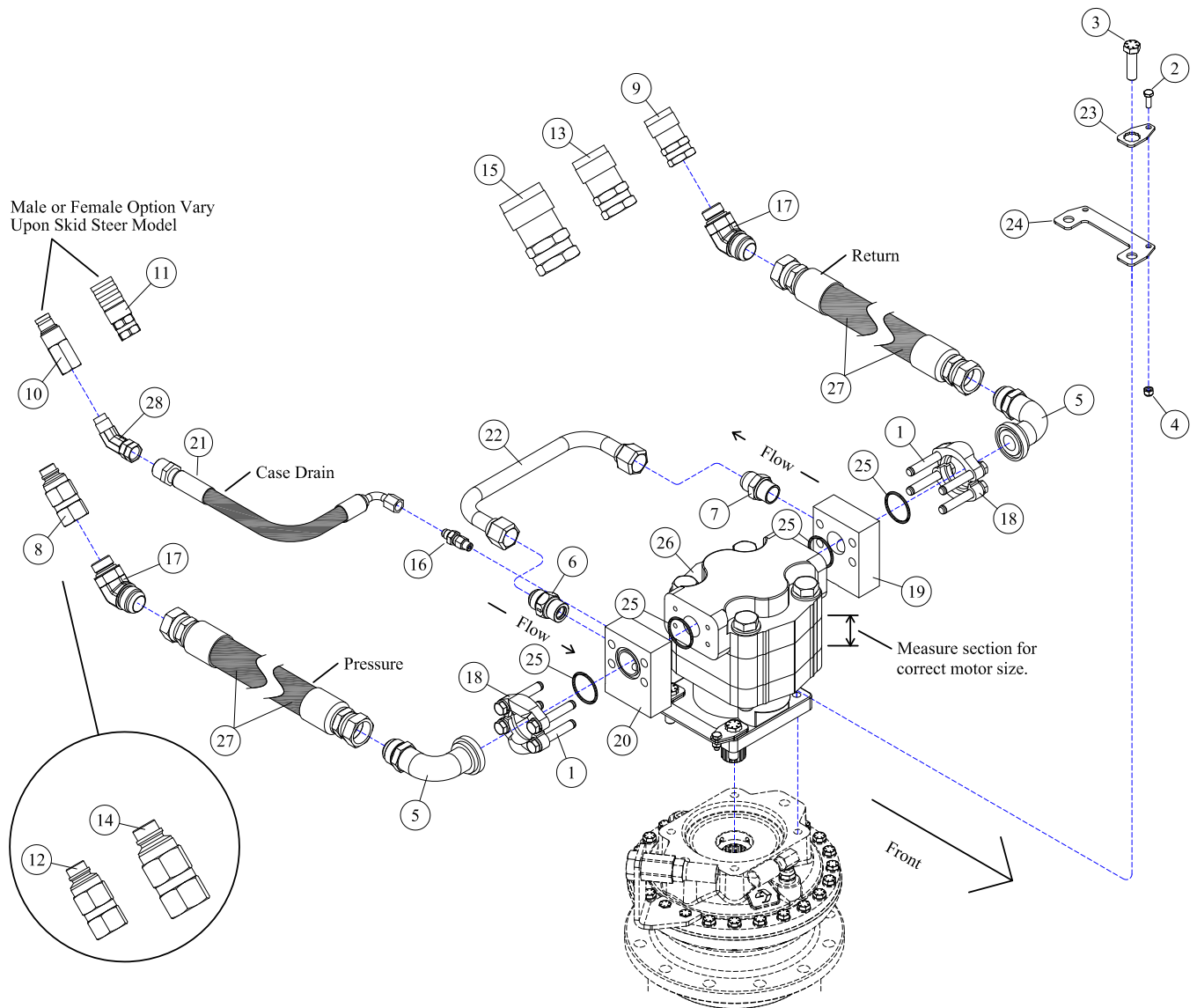




# DRIVE ASSEMBLIES





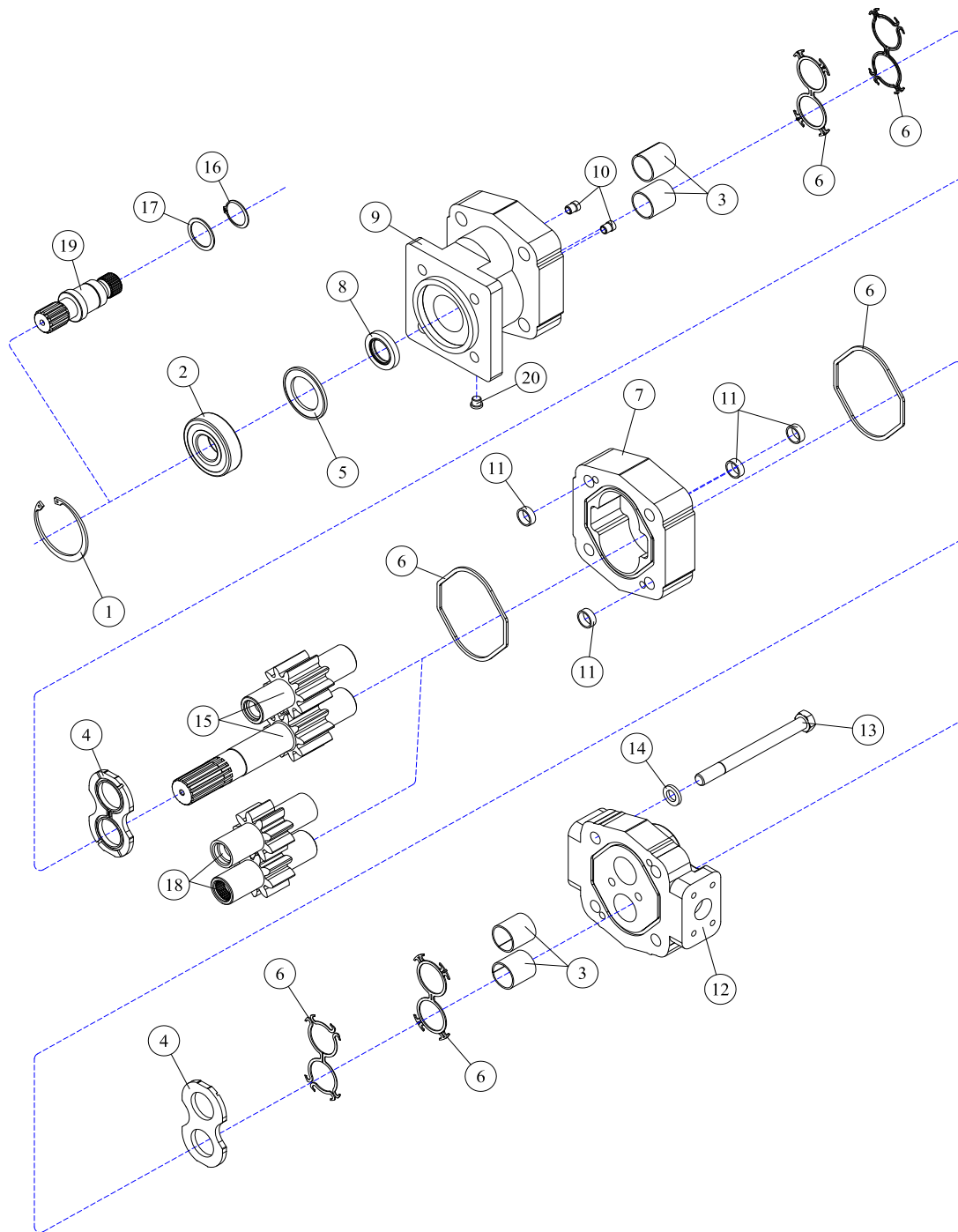
**DRIVE ASSEMBLIES - 60"(1524mm), 32-45GPM(122-170LPM)**

REF#	PARTS DESCRIPTION	REQ	PART #
1	7/16 X 3 NC HEX CAPSCREW (included with #19 & 20)	8	11-0587
2	1/4 X 3/4 NC HEX CAP	4	11-0588
3	1/2-20 X 1-3/4 H.S. NF HEX CAP GR 8	4	11-0664
4	1/4 NC NYLOCK NUT	4	11-1022
5	#20FLG X 1MJIC-90DEG ADAPTER	2	21-1267
6	CHECK VALVE	1	21-1474
7	3/4 MORB X 3/4 MJIC ADAPTER	1	21-1475
8	1/2 MALE QUICK COUPLER, FLAT FACE	1	21-1559
9	1/2 FEMALE QUICK COUPLER, FLAT FACE	1	21-1560
10	3/8 MALE QUICK COUPLER, FLAT FACE	1	21-1561
11	3/8 FEMALE QUICK COUPLER, FLAT FACE	1	21-1562
12	5/8 MALE QUICK COUPLER, FLAT FACE	1	21-1574
13	5/8 FEMALE QUICK COUPLER, FLAT FACE	1	21-1575
14	3/4 MALE QUICK COUPLER, FLAT FACE	1	21-1576
15	3/4 FEMALE QUICK COUPLER, FLAT FACE	1	21-1577
16	ADAPTER, 1/4MOR X 3/8MJIC	1	21-1597

REF#	PARTS DESCRIPTION	REQ	PART #
17	ADAPTER, 1MJIC-45DEG X 3/4MORB	2	21-1654
18	#20 FLANGE KIT (included with #19 & 20)	2	21-2105
19	CROSS OVER MANIFOLD KIT (includes #1, 18 & 25)	1	21-2180
20	TEE MANIFOLD KIT (includes #1, 18 & 25)	1	21-2181
21	HOSE 3/8 X 106 (3/8FJIC 90DEG X 1/2MP)	1	21-4290
22	RUN-AROUND TUBE	1	28-0051
23	MOTOR BOLT LOCK TAB	4	31-0503
24	MOTOR BOLT LOCK BASE	2	31-0504
25	O-RING (included with #18, 19 & 20)	4	33-0013
26	<b>MOTOR</b>		
	M365, 2-1/4" GEAR SET, 2-3/4" SECT, <b>32-45 GAL/MIN</b>	1	30-0524
27	<b>HOSE 1" (1FJIC X 1FJIC)</b>		
	"STANDARD", PRESSURE & RETURN 103"	2	21-4345
	"OPTIONAL UPGRADE" 4000 psi, PRESSURE 103"	1	21-4346
	"OPTIONAL UPGRADE" 4000 psi, RETURN 90"	1	21-4365
28	1/2MP X 1/2FP ADAPTER 45 DEG	1	21-1290

# DECK ASSEMBLIES



**30-0524 - MOTOR ASSEMBLY**

REF#	PARTS DESCRIPTION	REQ	PART #
1	SNAP RING	1	30-1009
2	OUTBOARD BEARING	1	30-1010
3	BUSHING	4	30-1011
4	THRUST PLATE	2	30-1012
5	SEAL RETAINER	1	30-1017
6	M365 SEAL KIT	Avail	30-1021
7	2-1/4" M365 GEAR HOUSING	1	30-1026
8	<b>SHAFT SEAL</b>		
	150 PSI (included in M365 seal kit)	1	30-1210
	500 PSI	1	30-1156
9	SHAFT END COVER	1	30-1086
10	CHECK ASSEMBLY	2	30-1087
11	ALIGNMENT BUSHING	4	30-1090

REF#	PARTS DESCRIPTION	REQ	PART #
12	PORT END COVER	1	30-1091
13	STUD	4	Call
14	WASHER	4	30-1092
	<b>GEAR SET OPTION A:</b>		
15	2-1/4" GEAR SET	1	30-1161
	<b>GEAR SET OPTION B:</b>		
16	RETAINING RING	1	30-1015
17	WASHER	1	30-1020
18	2-1/4" GEAR SET	1	30-1021
19	CONTINENTAL SHAFT, SPLINED	1	30-1141
20	PLUG	1	30-1093
*	SEAL APPLICATOR TOOL (not shown)	Avail	30-1041

**35-0093 - DIRECT DRIVE SPINDLE**

REF#	PARTS DESCRIPTION	REQ	PART #
1	BEARING-CONE (TOP)	1	10-0094
2	BEARING-CUP (TOP)	1	10-0095
3	BEARING-CONE (BOTTOM)	1	10-0096
4	BEARING-CUP (BOTTOM)	1	10-0097
5	BOLT-HEX HEAD	24	11-1611
6	WASHER-FLAT	24	11-1612
7	RING-RETAINING	1	11-1613
8	NUT-LOCK	1	11-1614
9	WASHER-LOCK	1	11-1615
10	SCREW-SKT HD CAP	6	11-1616
11	PIPE PLUG (TO COVER) (MAGNETIC)	1	21-1609
12	PIPE PLUG (TO COVER) (NON-MAGNETIC)	1	21-1610
13	PIPE PLUG (TO HUB) (MAGNETIC)	2	21-1611
14	WASHER-THRUST (TOP)	1	35-0096
15	COUPLING	1	35-0097
16	PLATE-KEEPER	1	35-0098
17	WASHER-THRUST (BOTTOM)	1	35-0099
**18	HUB	1	35-0100
19	SEAL-OIL	1	35-0101
*20	GUARD	1	35-0102
**21	SHAFT-OUTPUT	1	35-0103
22	<b>COVER</b>		
	C BASE (STANDARD)	1	35-0094
	D BASE (OPTIONAL)	1	35-0095

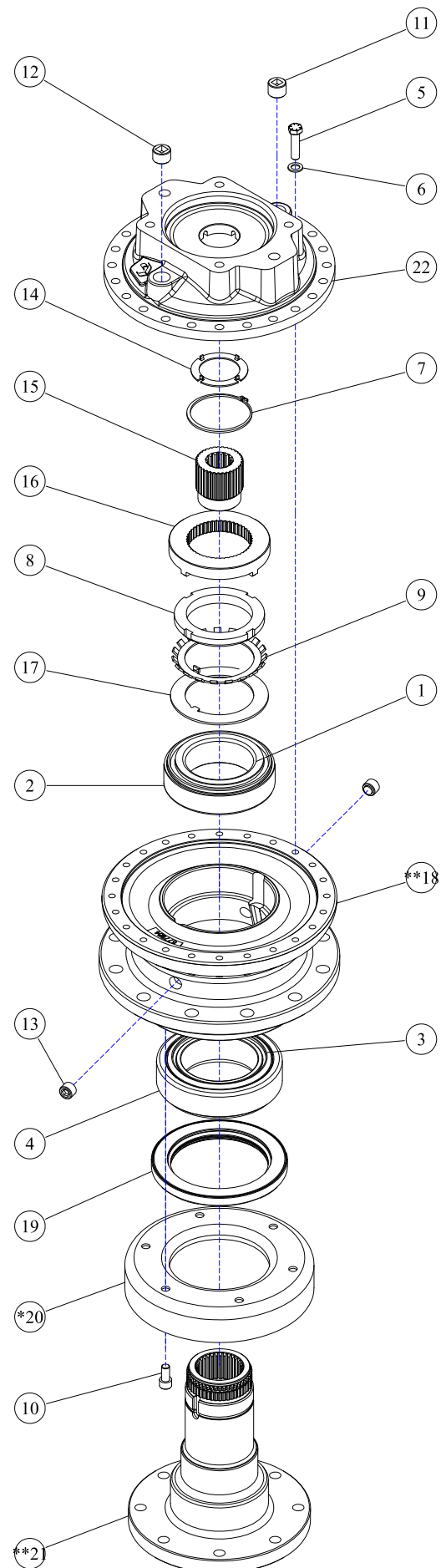
NOTE: WHEN ORDERING ANY ITEMS MARKED \* ABOVE,  
ALSO ORDER SERVICE KIT 33-0078

NOTE: WHEN ORDERING ANY ITEMS MARKED \*\* ABOVE,  
ALSO ORDER SERVICE KIT 33-0079

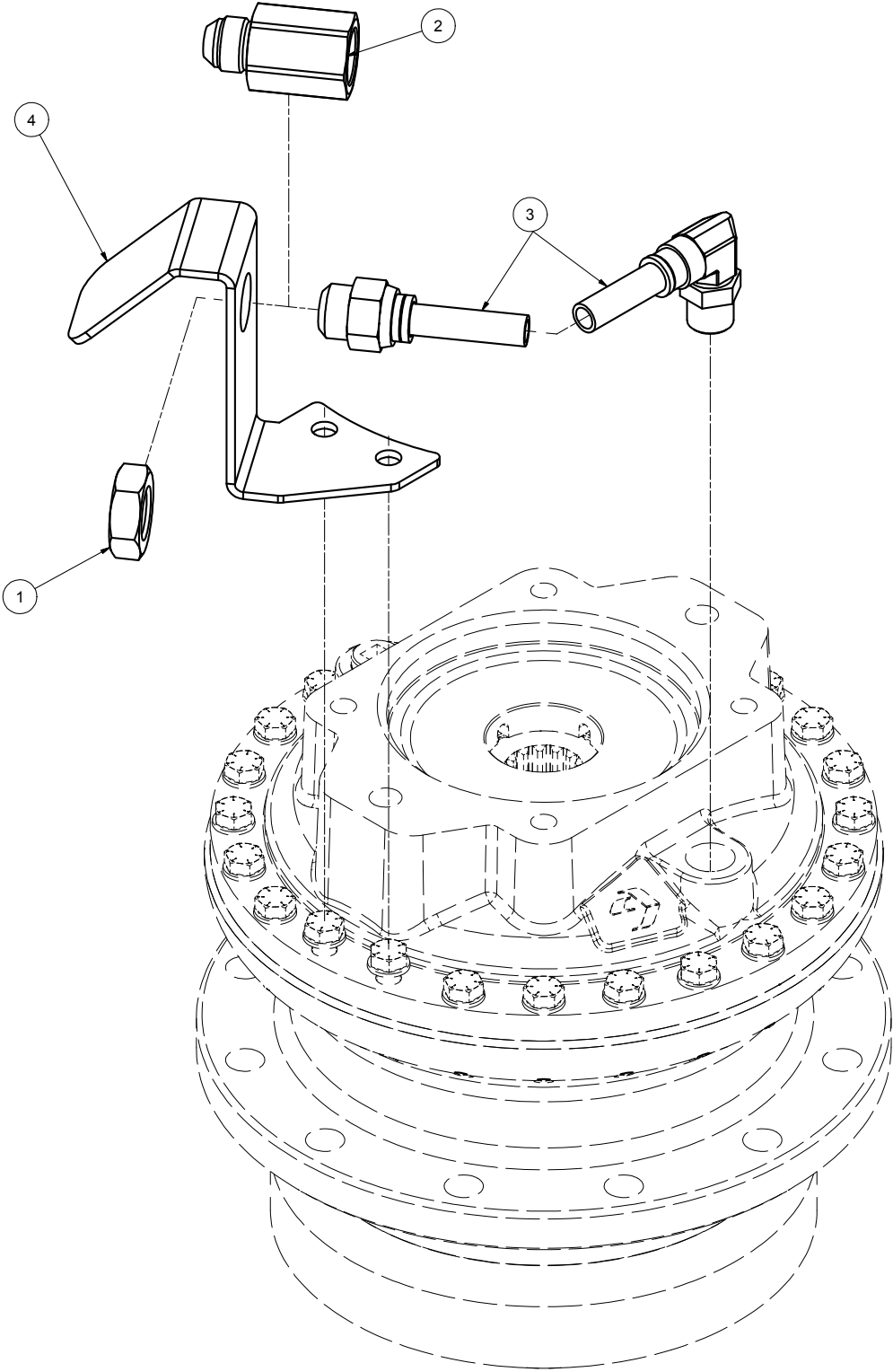
## SERVICE KITS

PART #	DESCRIPTION	INCLUDED ITEMS
33-0078	SEAL KIT	9, 19
33-0079	BEARING & SEAL KIT	1, 2, 3, 4, 9, 19
33-0080	COUPLER KIT	14, 15

KITS ALSO INCLUDE A TUBE OF SEALANT PART NO. 35-0104



PRESSURE RELIEF VALVE - 35-0093 DIRECT DRIVE SPINDLE



REF#	PARTS DESCRIPTION	REQ	PART#	TORQUE (ft-lbs)	TORQUE (Nm)
1	7/8 UNF JAM NUT	1	11-1159		
2	JEMTEC D3 SPINDLE RELIEF VALVE	1	21-1653		
3	HOSE 1/2 X 8 (5/8 JIC - 1/2 MP 90 DEG SWIVEL)	1	21-2419		
4	D3 RELIEF VALVE MOUNT	1	31-0688		

**39-0123 - VALVE ASSEMBLY**

**(PAGE INTENTIONALLY BLANK)**





**100% SATISFACTION  
GUARANTEE**  
★ GET IT, LOVE IT, *or* LEAVE IT! ★

**72-HOUR PARTS  
SHIPPING GUARANTEE**