



PARTS BOOK

SKID-STEER FORESTRY HEADS

• 60" CUT • SERIAL #23599+ •

DIAMOND MOWERS, LLC
350 E 60th St. North
Sioux Falls, SD 57104

FOR WARRANTY CALL DIAMOND MOWERS DIRECT:
888-960-0364

OUR TECHNICIANS WILL DIAGNOSE YOUR SITUATION
OVER THE PHONE TO GET YOU UP AND RUNNING QUICKLY.

Phone: 605-977-3300
Fax: 605-655-5870
www.diamondmowers.com

DEMAND BRILLIANCE.

© DIAMOND MOWERS, LLC



Foreword

This manual contains the parts breakdown and identification of the various components and structures that make up your mower implement.

The illustrations, drawings, and diagrams in this manual are based on the latest information available at the time of publication. Your machine may have product improvements and features not yet contained in this parts manual.

Diamond Mowers, LLC reserves the right to make changes at any time without notice or obligation.

Diamond Mowers, LLC™ and Wetblade™ are trademarks of Diamond Mowers, LLC.

This manual should be consulted prior and while assembling the unit, and anytime parts or assembly clarification is needed.

Copyright© 2016 Diamond Mowers, LLC

All rights reserved. While every precaution has been taken in the preparation of this manual, the publisher assumes no responsibility for errors or omissions. No part of this book covered by the copyrights heron may be reproduced or copied in any form or by any means - graphic, electronic, or mechanical, including photocopying, taping, or information storage and retrieval systems - without written permission of the publisher.



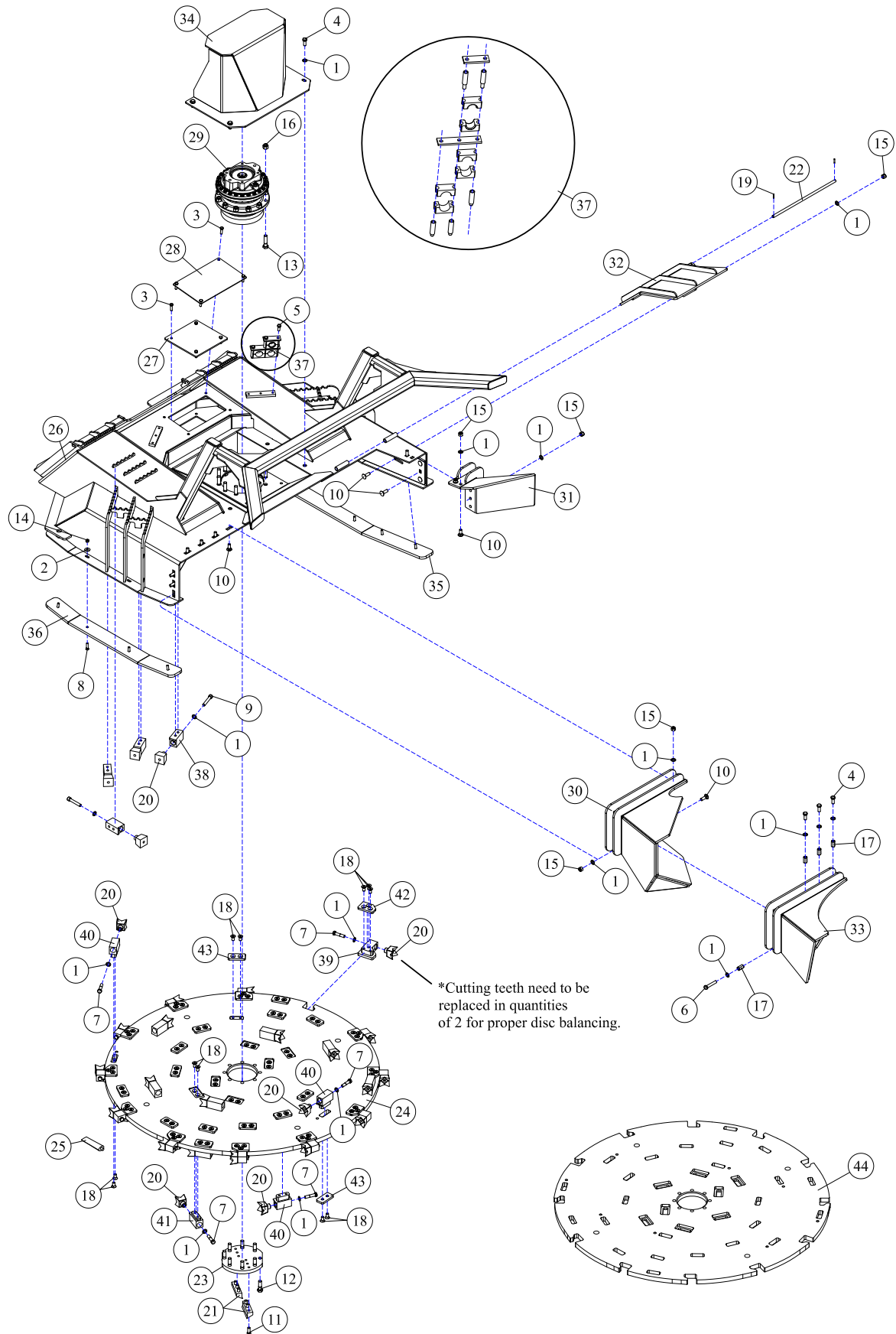
Table of Contents

FORESTRY HEADS	4
FORESTRY HEAD - 60" DECK, DIRECT DRIVE.....	5
FORESTRY HEAD - 60" DECK, DECAL IDENTIFICATION.....	7
FORESTRY HEAD - PRESSURE RELIEF VALVE.....	8
DRIVE ASSEMBLIES	9
DRIVE ASSEMBLY - 60", 32-45 GPM.....	10
DECK ASSEMBLIES	11
30-0524 - MOTOR ASSEMBLY.....	12
35-0093 - DIRECT DRIVE SPINDLE	13

FORESTRY HEADS



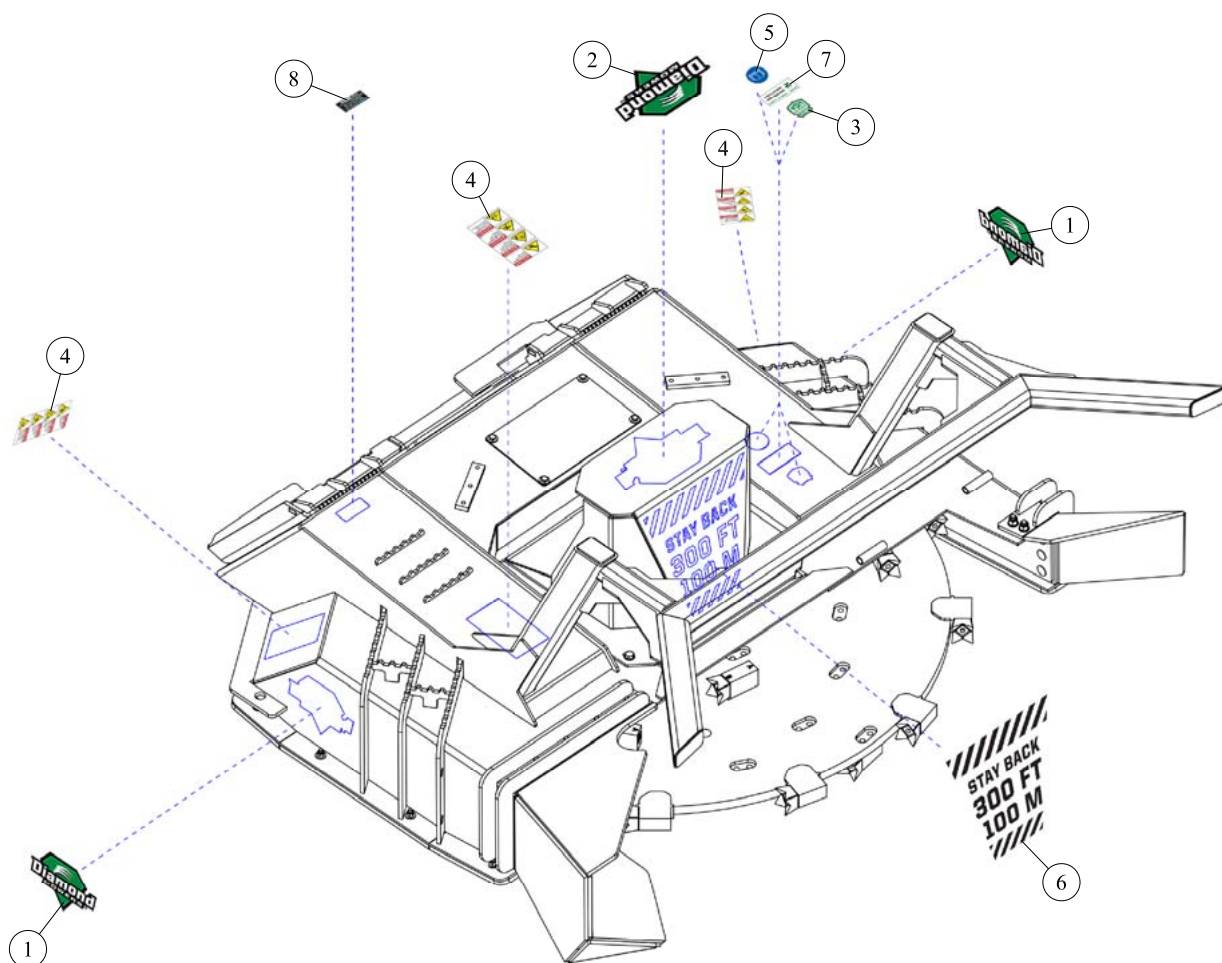
FORESTRY HEAD - 60" DECK, DIRECT DRIVE



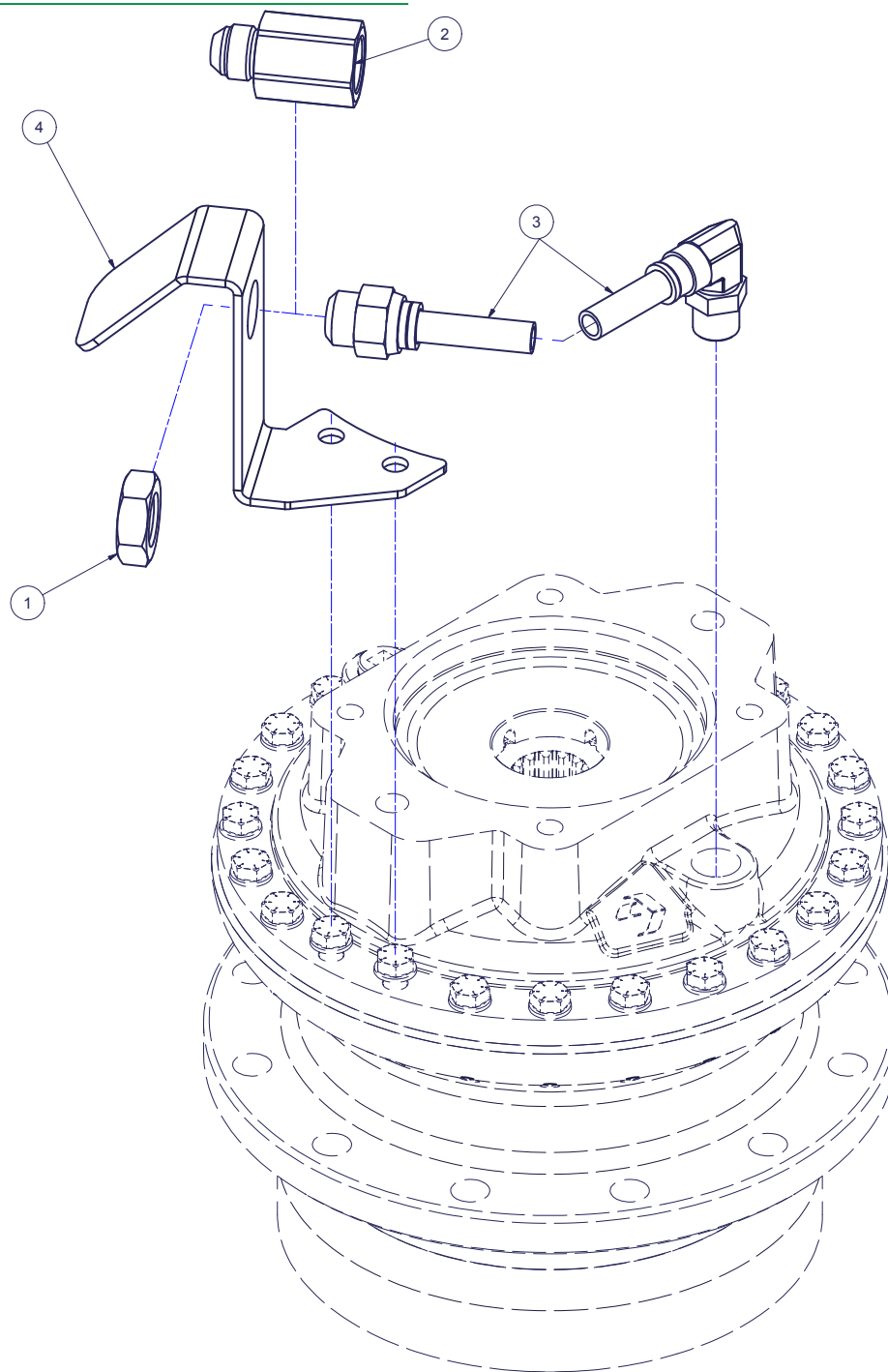
FORESTRY HEAD - 60" DECK, DIRECT DRIVE

REF#	PARTS DESCRIPTION	REQ	PART #
1	1/2 SAE FLAT WASHER GR 8	65	11-0042
2	3/8 FLAT WASHER GR 8	9	11-0092
3	3/8 X 1 NC HEX CAPSCREW	8	11-0532
4	1/2 X 1-1/4 NC HEX CAP	11	11-0570
5	7/16 X 1 NC HEX CAPSCREW	3	11-0584
6	1/2 X 2-3/4 NC HEX CAP, GR 5	1	11-0636
7	1/2 X 2-1/4 H.S. NF HEX CAP	44	11-0660
8	3/8 X 1-1/4 NC PLOW BOLT	9	11-0804
9	1/2 X 3 NF SHCS	4	11-0929
10	1/2 X 1-3/4 NC CARRIAGE BOLT GR 8	13	11-0961
11	1/2 X 1-1/4 NC SHCS	6	11-0965
12	5/8 X 2 NC HEX CAPSCREW, GR 8	8	11-0970
13	5/8 X 2-1/2 NC HEX CAPSCREW, GR 8	12	11-0971
14	3/8 NC HEX NUT	9	11-1001
15	1/2 NC NYLOCK NUT GR 8	14	11-1072
16	5/8 NC NYLOCK NUT GR 8	12	11-1073
17	1/2 X 1-1/4 NC COUPLING NUT	4	11-1077
18	1/2 X 1 FSHCS NC	100	11-1158
19	ROLL PIN, 5/32 X 1	2	11-2054
20	*FORESTRY TOOTH, STEEL	48	22-0019
21	FBC, CENTER PLANNER	2	24-0192
22	DEFLECTOR HINGE ROD	1	24-0213
23	FBS, BOLT PROTECTOR	1	24-0224
24	WELD FREE D3 DISC COMPLETE	1	24-0283
25	LIQUID METAL FILLER, 3.5 OZ/PK	1	24-0307
26	SKID DECK	1	25-0204
27	LOWER ACCESS PORT COVER	1	31-0455
28	UPPER ACCESS PORT COVER	1	31-0537
29	SPINDLE ASSEMBLY	1	35-0093
30	NARROW CHUTE	1	41-1302
31	LEFT CHUTE	1	41-1303

REF#	PARTS DESCRIPTION	REQ	PART #
32	DEBRIS DEFLECTOR	1	41-1305
33	WIDE CHUTE	1	41-1307
34	MOTOR GUARD	1	41-1461
35	LEFT SKID SHOE	1	42-0048
36	RIGHT SKID SHOE	1	42-0049
37	HOSE CLAMP	1	44-0351
38	FBC TOOTH HOLDER INSIDE	4	90-7035
39	OUTER TOOTH HOLDER	12	90-7054
40	MIDDLE TOOTH HOLDER	24	90-7055
41	INNER TOOTH HOLDER	8	90-7056
42	OUTER TOOTH HOLDER COVER	12	P24-0270-12
43	COVER	32	P24-0270-13
44	D3 WELD FREE DISC MACHINED BLANK	1	P24-0283-11
45	TOOTH KIT		
	Kit 44-0829 includes 2 each of parts 1, 7 & 20	1	
	Kit 44-0830 includes 20 each of parts 1, 7 & 20	1	
	Kit 44-0831 includes 50 each of parts 1, 7 & 20	1	
46	COMPLETE TOOTH KIT		
	Kit 44-0793 includes 4 of part 9	1	
	Kit 44-0793 includes 44 of part 7	1	
	Kit 44-0793 includes 48 each of parts 1 & 20	1	
	6 each of part 11, and 2 each of part 21		
47	OUTER TOOTH HOLDER KIT		
	Kit 44-0835 includes 3 of part 18	1	
	Kit 44-0835 includes 1 each of parts 39 & 42	1	
48	MIDDLE TOOTH HOLDER KIT		
	Kit 44-0836 includes 2 of part 18	1	
	Kit 44-0836 includes 1 each of parts 40 & 43	1	
49	INNER TOOTH HOLDER KIT		
	Kit 44-0837 includes 2 of part 18	1	
	Kit 44-0837 includes 1 each of parts 41 & 43	1	

FORESTRY HEAD - 60" DECK, DECAL IDENTIFICATION

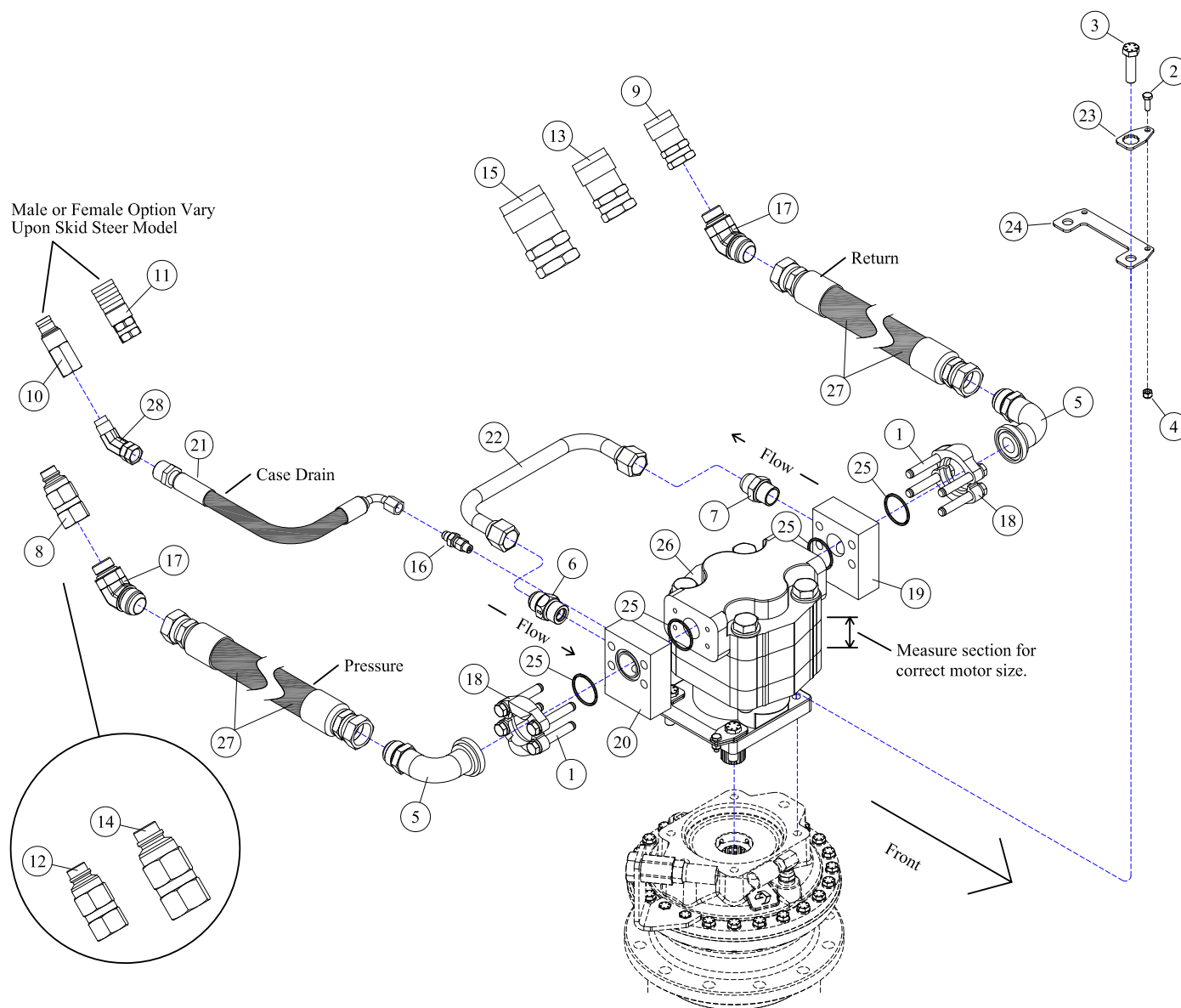
REF#	PARTS DESCRIPTION	REQ	PART #
1	"DIAMOND MOWERS" LOGO (7 inch)	2	15-0050
2	"DIAMOND MOWERS" LOGO (11 inch)	1	15-0052
3	"MADE IN THE USA"	1	15-0055
4	"DANGER" DECAL GROUP A (vertical)	3	15-0056
5	"READ MANUAL"	1	15-0058
6	"STAY BACK 300ft / 100m"	1	15-0060
7	"WARRANTY AND SERVICE"	1	15-1016
8	SERIAL NUMBER LABEL	1	

FORESTRY HEAD - PRESSURE RELIEF VALVE

REF#	PARTS DESCRIPTION	REQ	PART#	TORQUE (ft-lbs)	TORQUE (Nm)
1	7/8 UNF JAM NUT	1	11-1159		
2	JEMTEC D3 SPINDLE RELIEF VALVE	1	21-1653		
3	HOSE 1/2 X 8 (5/8 JIC - 1/2 MP 90 DEG SWIVEL)	1	21-2419		
4	D3 RELIEF VALVE MOUNT	1	31-0688		

DRIVE ASSEMBLIES



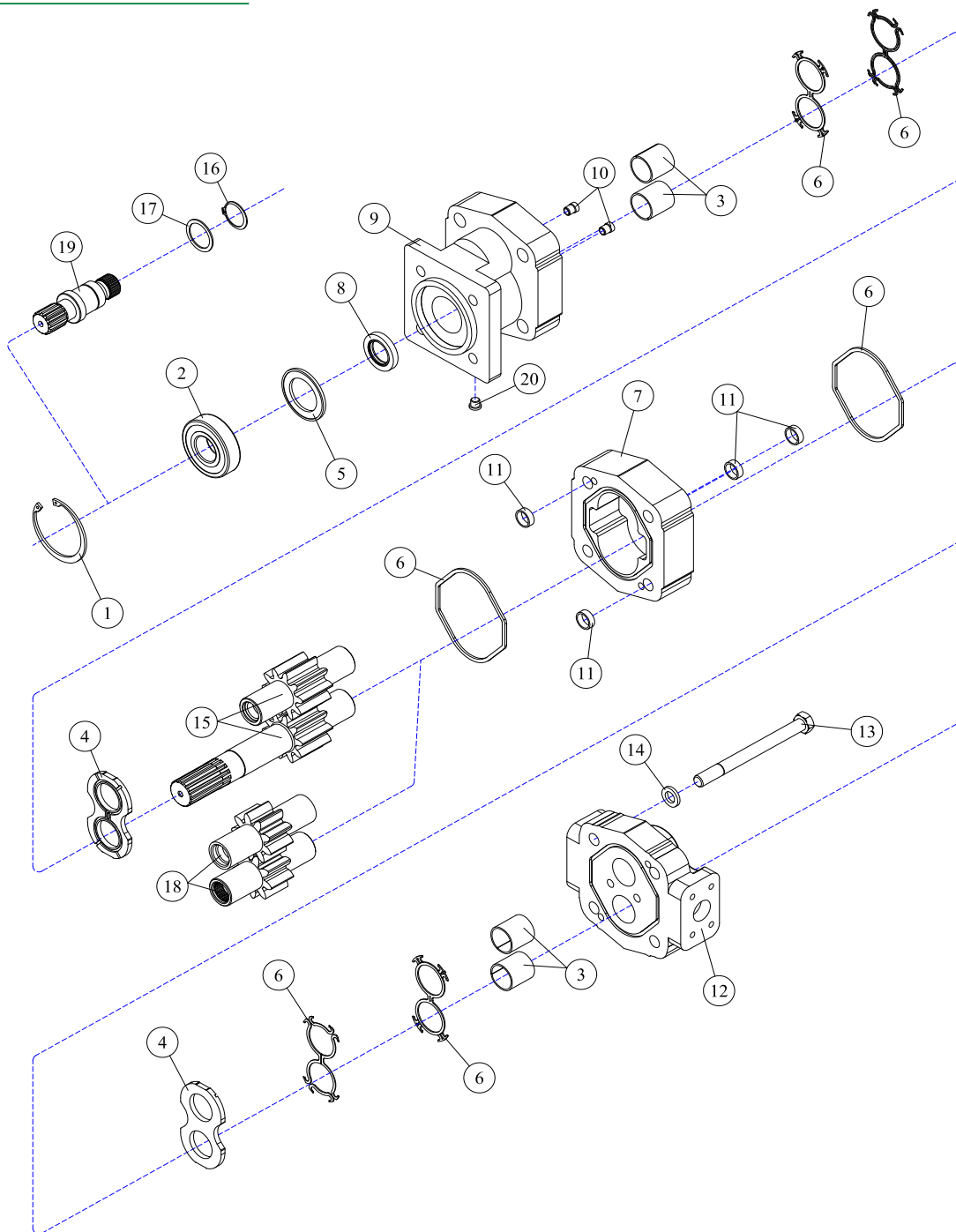
DRIVE ASSEMBLY - 60", 32-45 GPM

REF#	PARTS DESCRIPTION	REQ	PART #
1	7/16 X 3 NC HEX CAPSCREW (included with #19 & 20)	8	11-0587
2	1/4 X 3/4 NC HEX CAP	4	11-0588
3	1/2-20 X 1-3/4 H.S. NF HEX CAP GR 8	4	11-0664
4	1/4 NC NYLOCK NUT	4	11-1022
5	#20FLG X 1MJIC-90DEG ADAPTER	2	21-1267
6	CHECK VALVE	1	21-1474
7	3/4 MORB X 3/4 MJIC ADAPTER	1	21-1475
8	1/2 MALE QUICK COUPLER, FLAT FACE	1	21-1559
9	1/2 FEMALE QUICK COUPLER, FLAT FACE	1	21-1560
10	3/8 MALE QUICK COUPLER, FLAT FACE	1	21-1561
11	3/8 FEMALE QUICK COUPLER, FLAT FACE	1	21-1562
12	5/8 MALE QUICK COUPLER, FLAT FACE	1	21-1574
13	5/8 FEMALE QUICK COUPLER, FLAT FACE	1	21-1575
14	3/4 MALE QUICK COUPLER, FLAT FACE	1	21-1576
15	3/4 FEMALE QUICK COUPLER, FLAT FACE	1	21-1577
16	ADAPTER, 1/4MOR X 3/8MJIC	1	21-1597

REF#	PARTS DESCRIPTION	REQ	PART #
17	ADAPTER, 1MJIC-45DEG X 3/4MORB	2	21-1654
18	#20 FLANGE KIT (included with #19 & 20)	2	21-2105
19	CROSS OVER MANIFOLD KIT (includes #1, 18 & 25)	1	21-2180
20	TEE MANIFOLD KIT (includes #1, 18 & 25)	1	21-2181
21	HOSE 3/8 X 106 (3/8FJIC 90DEG X 1/2MP)	1	21-4290
22	RUN-AROUND TUBE	1	28-0051
23	MOTOR BOLT LOCK TAB	4	31-0503
24	MOTOR BOLT LOCK BASE	2	31-0504
25	O-RING (included with #18, 19 & 20)	4	33-0013
26	MOTOR		
	M365, 2-1/4" GEAR SET, 2-3/4" SECT, 32-45 GAL/MIN	1	30-0524
27	HOSE 1" (1FJIC X 1FJIC)		
	"STANDARD", PRESSURE & RETURN 103"	2	21-4345
	"OPTIONAL UPGRADE" 4000 psi, PRESSURE 103"	1	21-4346
	"OPTIONAL UPGRADE" 4000 psi, RETURN 90"	1	21-4365
28	1/2MP X 1/2FP ADAPTER 45 DEG	1	21-1290

DECK ASSEMBLIES



30-0524 - MOTOR ASSEMBLY

REF#	PARTS DESCRIPTION	REQ	PART #
1	SNAP RING	1	30-1009
2	OUTBOARD BEARING	1	30-1010
3	BUSHING	4	30-1011
4	THRUST PLATE	2	30-1012
5	SEAL RETAINER	1	30-1017
6	M365 SEAL KIT	Avail	30-1021
7	2-1/4" M365 GEAR HOUSING	1	30-1026
8	SHAFT SEAL		
	150 PSI (included in M365 seal kit)	1	30-1210
	500 PSI	1	30-1156
9	SHAFT END COVER	1	30-1086
10	CHECK ASSEMBLY	2	30-1087
11	ALIGNMENT BUSHING	4	30-1090

REF#	PARTS DESCRIPTION	REQ	PART #
12	PORT END COVER	1	30-1091
13	STUD	4	Call
14	WASHER	4	30-1093
	GEAR SET OPTION A:		
15	2-1/4" GEAR SET	1	30-1165
	GEAR SET OPTION B:		
16	RETAINING RING	1	30-1019
17	WASHER	1	30-1020
18	2-1/4" GEAR SET	1	30-1025
19	CONTINENTAL SHAFT, SPLINED	1	30-1144
20	PLUG	1	30-1096
*	SEAL APPLICATOR TOOL (not shown)	Avail	30-1048

35-0093 - DIRECT DRIVE SPINDLE

REF#	PARTS DESCRIPTION	REQ	PART #
1	BEARING-CONE (TOP)	1	10-0094
2	BEARING-CUP (TOP)	1	10-0095
3	BEARING-CONE (BOTTOM)	1	10-0096
4	BEARING-CUP (BOTTOM)	1	10-0097
5	BOLT-HEX HEAD	24	11-1611
6	WASHER-FLAT	24	11-1612
7	RING-RETAINING	1	11-1613
8	NUT-LOCK	1	11-1614
9	WASHER-LOCK	1	11-1615
10	SCREW-SKT HD CAP	6	11-1616
11	PIPE PLUG (TO COVER) (MAGNETIC)	1	21-1609
12	PIPE PLUG (TO COVER) (NON-MAGNETIC)	1	21-1610
13	PIPE PLUG (TO HUB) (MAGNETIC)	2	21-1611
14	WASHER-THRUST (TOP)	1	35-0096
15	COUPLING	1	35-0097
16	PLATE-KEEPER	1	35-0098
17	WASHER-THRUST (BOTTOM)	1	35-0099
**18	HUB	1	35-0100
19	SEAL-OIL	1	35-0101
*20	GUARD	1	35-0102
**21	SHAFT-OUTPUT	1	35-0103
22	COVER		
	C BASE (STANDARD)	1	35-0094
	D BASE (OPTIONAL)	1	35-0095

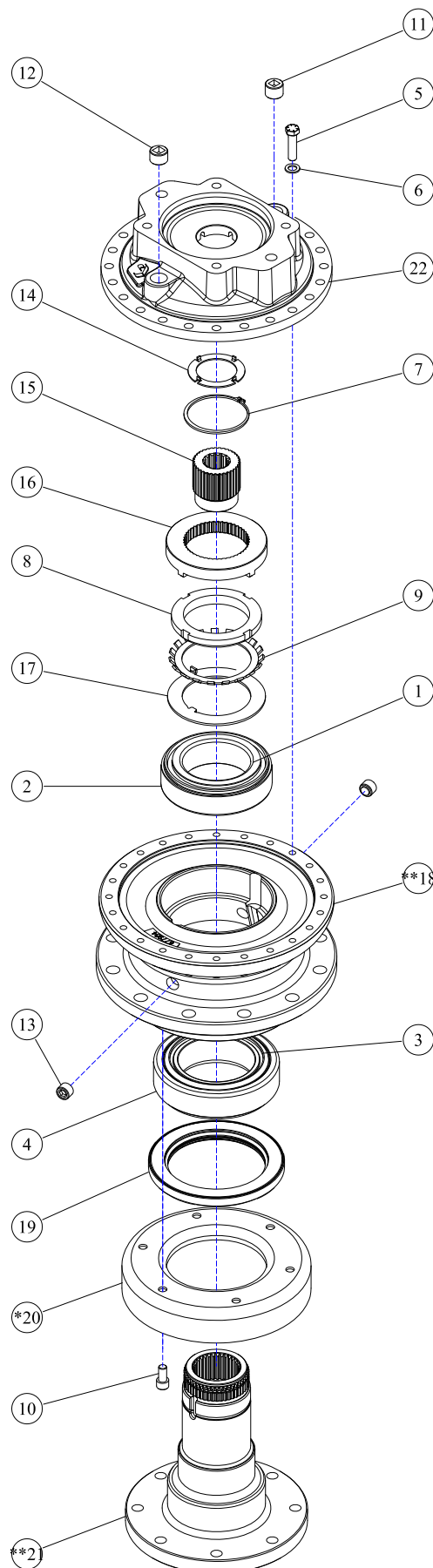
NOTE: WHEN ORDERING ANY ITEMS MARKED * ABOVE,
ALSO ORDER SERVICE KIT 33-0078

NOTE: WHEN ORDERING ANY ITEMS MARKED ** ABOVE,
ALSO ORDER SERVICE KIT 33-0079

SERVICE KITS

PART #	DESCRIPTION	INCLUDED ITEMS
33-0078	SEAL KIT	9, 19
33-0079	BEARING & SEAL KIT	1, 2, 3, 4, 9, 19
33-0080	COUPLER KIT	14, 15

KITS ALSO INCLUDE A TUBE OF SEALANT PART NO. 35-0104





**100% SATISFACTION
GUARANTEE**
★ GET IT, LOVE IT, *or* LEAVE IT! ★

**72-HOUR PARTS
SHIPPING GUARANTEE**