



PARTS BOOK

ROTARY HEADS

• 40" • BOOM MOUNT • SERIAL #XXXXX+ •

DIAMOND MOWERS, LLC
350 E 60th St. North
Sioux Falls, SD 57104

FOR WARRANTY CALL DIAMOND MOWERS DIRECT:
888-960-0364

OUR TECHNICIANS WILL DIAGNOSE YOUR SITUATION
OVER THE PHONE TO GET YOU UP AND RUNNING QUICKLY.

Phone: 605-977-3300
Fax: 605-655-5870
www.diamondmowers.com

DEMAND BRILLIANCE.

© DIAMOND MOWERS, LLC



Foreword

This manual contains the parts breakdown and identification of the various components and structures that make up your mower implement.

The illustrations, drawings, and diagrams in this manual are based on the latest information available at the time of publication. Your machine may have product improvements and features not yet contained in this parts manual.

Diamond Mowers, LLC reserves the right to make changes at any time without notice or obligation.

Diamond Mowers, LLC™ and Wetblade™ are trademarks of Diamond Mowers, LLC.

This manual should be consulted prior and while assembling the unit, and anytime parts or assembly clarification is needed.

Copyright© 2016 Diamond Mowers, LLC

All rights reserved. While every precaution has been taken in the preparation of this manual, the publisher assumes no responsibility for errors or omissions. No part of this book covered by the copyrights hereon may be reproduced or copied in any form or by any means - graphic, electronic, or mechanical, including photocopying, taping, or information storage and retrieval systems - without written permission of the publisher.



Table of Contents

ROTARY HEADS4

 BOOM ROTARY HEAD - 40" INDIRECT DRIVE.....5

 ROTARY HEAD - 40" DECK, DECAL IDENTIFICATION.....6

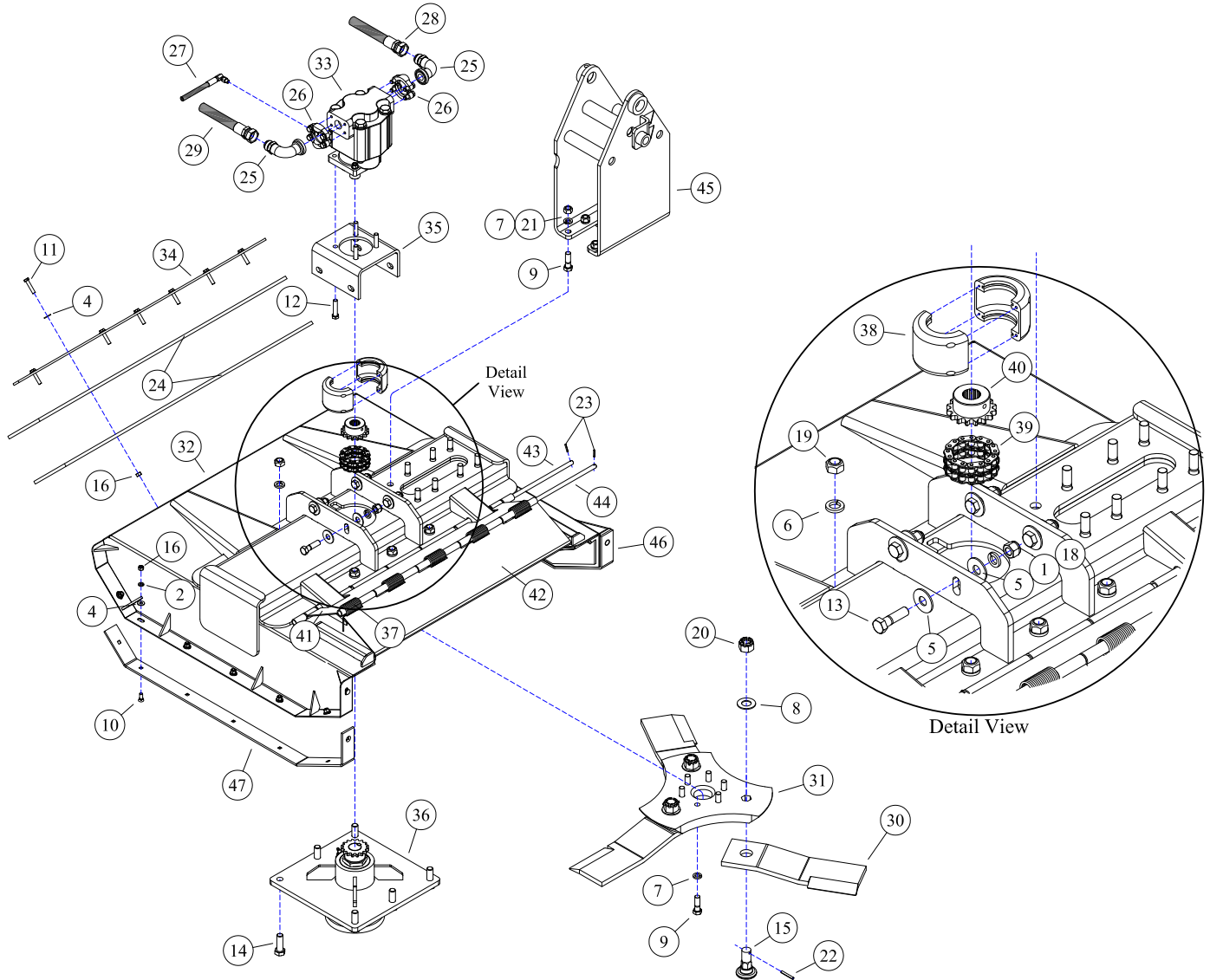
DECK ASSEMBLIES.....7

 30-0526 - MOTOR ASSEMBLY.....8

 35-0010 - INDIRECT DRIVE SPINDLE.....9

ROTARY HEADS



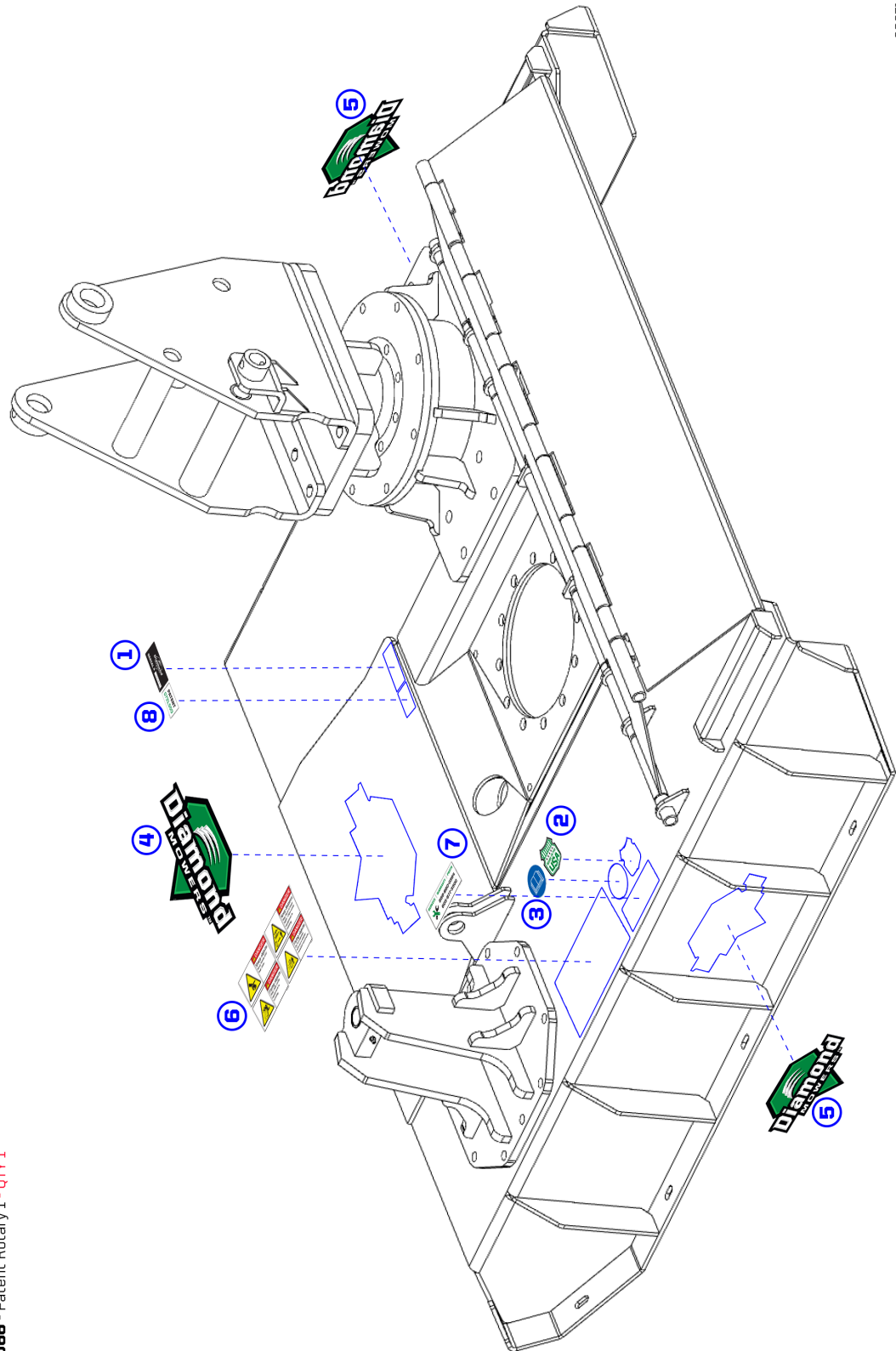
BOOM ROTARY HEAD - 40" INDIRECT DRIVE

REF#	PARTS DESCRIPTION	REQ	PART #
1	5/8 LOCK WASHER GR 5	4	11-0004
2	3/8 LOCK WASHER GR 5	14	11-0005
3	1/2 LOCK WASHER GR 5	4	11-0011
4	5/16 FLAT WASHER GR 5	21	11-0015
5	5/8 FLAT WASHER GR 5	8	11-0025
6	3/4 LOCK WASHER GR 8	6	11-0040
7	5/8 LOCK WASHER GR 8	14	11-0043
8	1-1/8 SAE FLAT WASHER GR 8	3	11-0057
9	5/8 X 2 H.S. NF HEX CAPSCREW	14	11-0508
10	3/8 X 1-1/4 PLOW BOLT	14	11-0804
11	3/8 X 1-3/4 NC HEX CAPSCREW	7	11-0521
12	1/2 X 2-1/4 NC HEX CAPSCREW	4	11-0531
13	5/8 X 2-1/4 NC HEX CAPSCREW	4	11-0631
14	3/4 X 2-1/4 NF H.S. HEX CAPSCREW	6	11-0658
15	BLADE BOLT - HEX BASE	3	11-0759
16	3/8 NC HEX NUT	21	11-1001
17	1/2 NC NYLOCK NUT	4	11-1018
18	5/8 NC NYLOCK NUT	4	11-1025
19	3/4 NF H.S. STOVER NUT	6	11-1032
20	1-1/8 NF CASTLE NUT	3	11-1050
21	5/8 H.S. NF STOVER NUT	8	11-1143
22	1/4 X 2 ROLLPIN	3	11-2005
23	5/32 X 1 ROLL PIN	4	11-2054
24	FLAP	2	18-0067

REF#	PARTS DESCRIPTION	REQ	PART #
25	#20FLG-90DEG X 1MJIC-90DEG, ADAPTER	2	21-1267
26	#20 FLANGE KIT	2	21-2105
27	HOSE 1/4 X 62 (1/4MORB-90DEG X 5/16MJIC)	1	21-2498
28	HOSE 3/4 X 54 (3/4MJIC X 1FJIC)	1	21-3626
29	HOSE 3/4 X 59 (3/4MJIC X 1FJIC)	1	21-3627
30	5/8" BRUSH KNIFE	3	22-0006
31	40" HEAVY TRI-HEX DISH	1	24-0154
32	40" BOOM DECK	1	25-0146
33	M330 1-1/2 GEAR SET, 2 SECTION	1	30-0526
34	FLAP RETAINING BAR	1	31-0205
35	MOTOR MOUNT	1	31-0242
36	SPINDLE ASSEMBLY	1	35-0010
37	TORSION SPRING	5	36-0003
38	COVER COUPLING	1	37-0004
39	CHAIN COUPLING	1	37-0006
40	1-1/4 SPROCKET	1	37-0031
41	REAR SHIELD	1	41-0816
42	FRONT SHIELD	1	41-0817
43	TRAP DOOR ROD - REAR	1	41-0818
44	TRAP DOOR ROD - FRONT	1	41-0819
45	MAST, STD 3-POINT BOOM ROTARY	1	41-0920
46	LEFT SKID SHOE	1	42-0034
47	RIGHT SKID SHOE	1	42-0035
48	BLADE KIT (Includes 8, 15, 20, 22, & 30)	1	44-0228

ROTARY HEAD - 40" DECK, DECAL IDENTIFICATION

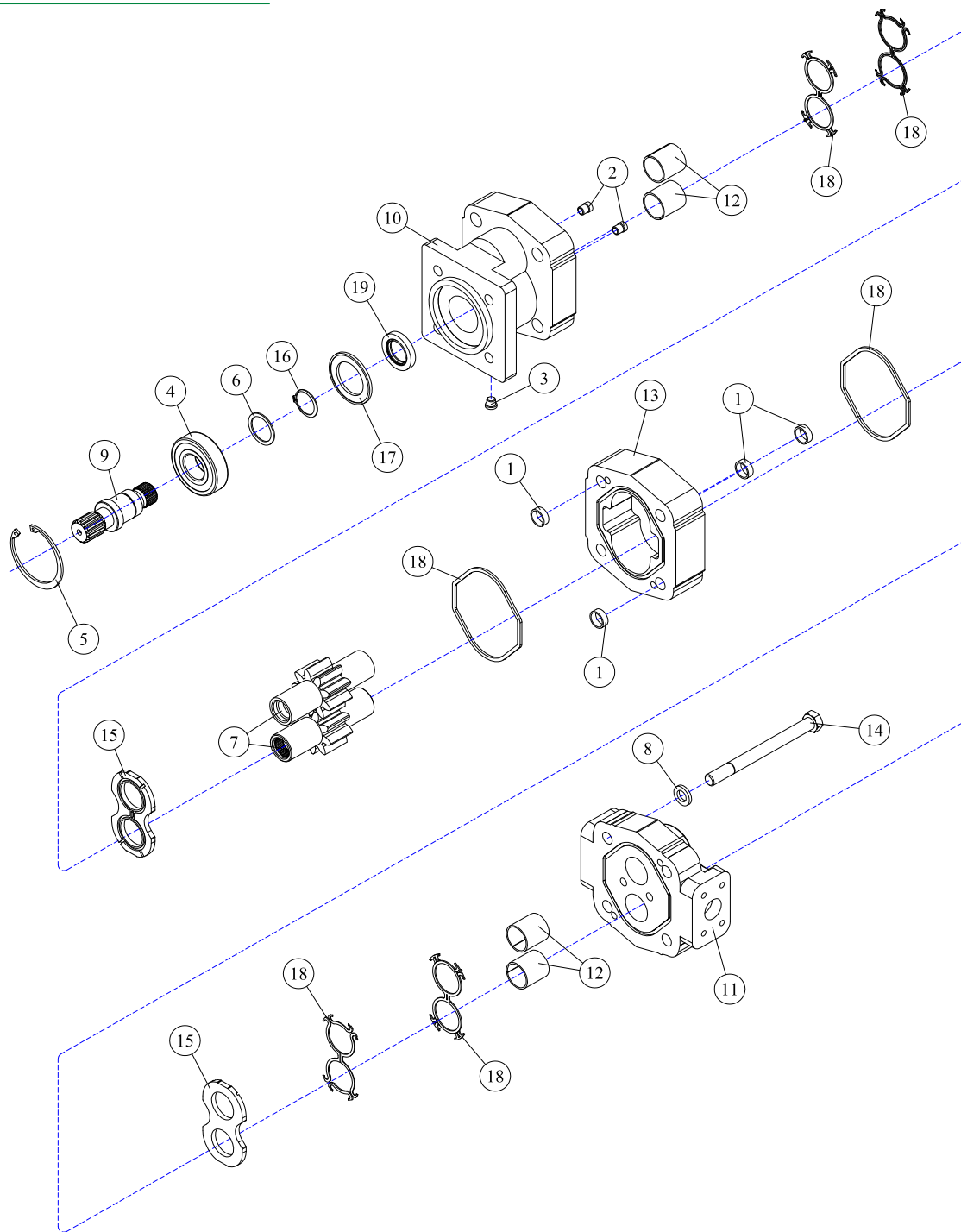
080718



- ① SERIAL NUMBER LABEL - (not included in kit) - QTY 1
- ② PART #15-0055 - Made In USA - QTY 1
- ③ PART #15-0058 - Read Manual - QTY 1
- ④ PART #15-0053 - Diamond Mowers Logo 13" - QTY 1
- ⑤ PART #15-0050 - Diamond Mowers Logo 7" - QTY 2
- ⑥ PART #15-0057 - Decal Group Horizontal - QTY 1
- ⑦ PART #15-1016 - Warranty - QTY 1
- ⑧ PART #15-0066 - Patent Rotary 1 - QTY 1

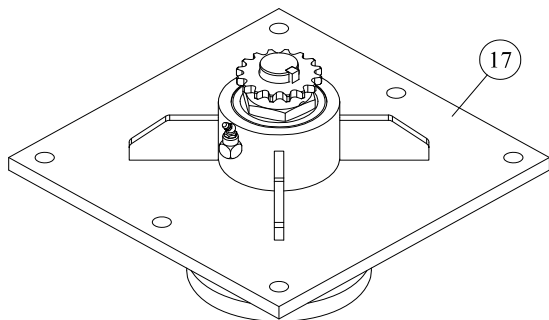
DECK ASSEMBLIES



30-0526 - MOTOR ASSEMBLY

REF#	PARTS DESCRIPTION	REQ	PART #
1	DOWEL PIN	4	30-1086
2	CHECK ASSEMBLY	2	30-1087
3	PLUG	1	30-1096
4	OUTBOARD BEARING	1	30-1109
5	SNAP RING	1	30-1110
6	BEARING SPACER	1	30-1112
7	GEAR SET, M330, 1-1/2"	1	30-1119
8	WASHER	4	30-1127
9	CONTINENTAL SHAFT	1	30-1130
10	SHAFT END COVER	1	30-1182

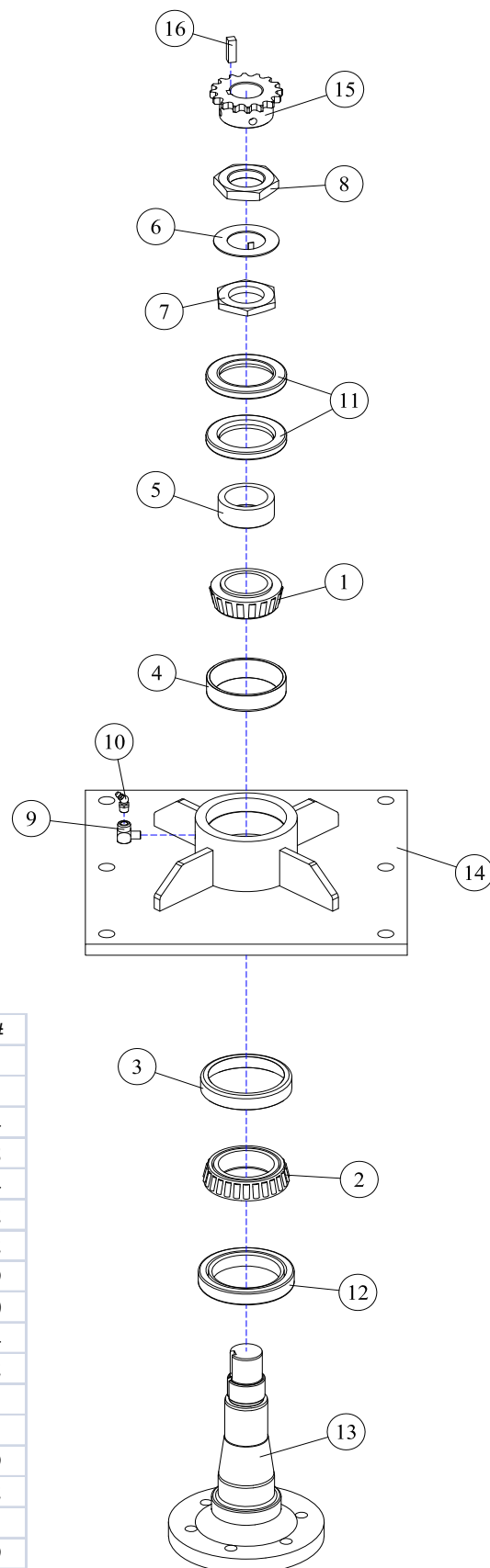
REF#	PARTS DESCRIPTION	REQ	PART #
11	PORT END COVER	1	30-1183
12	BUSHING (included in shaft & port covers)	4	Call
13	GEAR HOUSING, M330, 1-1/2"	1	30-1184
14	STUD	4	30-1185
15	THRUST PLATE	2	30-1186
16	RETAINING RING	1	30-1187
17	SEAL RETAINER	1	30-1188
18	M330 SEAL KIT	Avail	30-1189
19	SHAFT SEAL 100 PSI (included in M330 seal kit)	1	30-1190
*	SEAL APPLICATOR TOOL (not shown)	Avail	30-1048

35-0010 - INDIRECT DRIVE SPINDLE

* Complete spindle assemblies also available.
Diamond Part #35-0010

**Do not use #2 heavy-duty grease on spindle assembly. Use Diamond spindle grease parts #23-0001

***Complete spindle repair kits available.
These kits include 10-0003, 10-0004, 10-0008, 10-0014, 10-1002, 11-0002, 11-1009, 11-1010, 33-0001, 33-0003 & 37-0009. These can be purchased using part #44-0001



REF#	PARTS DESCRIPTION	REQ	PART #
1	BEARING CONE	1	10-0003
2	BEARING CONE	1	10-0004
3	BEARING CUP	1	10-0008
4	BEARING CUP	1	10-0014
5	BEARING ADJUSTMENT SLEEVE	1	10-1002
6	JAM WASHER	1	11-0002
7	ADJUSTMENT BEARING NUT	1	11-1009
8	ADJUSTMENT BEARING NUT	1	11-1010
9	1/8 X 90DEG ELBOW	1	21-1104
10	1/8" X 45 GREASE ZERK	1	23-0002
11	UPPER SEAL SET	1	33-0001
12	LOWER SEAL	1	33-0003
13	SPINDLE	1	35-0009
14	SPINDLE HOUSING	1	35-0012
15	SPROCKET	1	37-0003
16	SPINDLE KEY	1	37-0009
17*	SPINDLE ASSY COMPLETE	Avail	35-0010
18**	DIAMOND SPINDLE GREASE	Avail	23-0001
19***	SPINDLE REPAIR KIT	Avail	44-0001



**100% SATISFACTION
GUARANTEE**
★ GET IT, LOVE IT, *or* LEAVE IT! ★

**72-HOUR PARTS
SHIPPING GUARANTEE**