



PARTS BOOK

ROTARY HEADS

• 50" • BOOM MOUNT • SERIAL #XXXXX+ •

DIAMOND MOWERS, LLC
350 E 60th St. North
Sioux Falls, SD 57104

FOR WARRANTY CALL DIAMOND MOWERS DIRECT:
888-960-0364
OUR TECHNICIANS WILL DIAGNOSE YOUR SITUATION
OVER THE PHONE TO GET YOU UP AND RUNNING QUICKLY.

Phone: 605-977-3300
Fax: 605-655-5870
www.diamondmowers.com

DEMAND BRILLIANCE.

© DIAMOND MOWERS, LLC



Foreword

This manual contains the parts breakdown and identification of the various components and structures that make up your mower implement.

The illustrations, drawings, and diagrams in this manual are based on the latest information available at the time of publication. Your machine may have product improvements and features not yet contained in this parts manual.

Diamond Mowers, LLC reserves the right to make changes at any time without notice or obligation.

Diamond Mowers, LLC™ and Wetblade™ are trademarks of Diamond Mowers, LLC.

This manual should be consulted prior and while assembling the unit, and anytime parts or assembly clarification is needed.

Copyright© 2016 Diamond Mowers, LLC

All rights reserved. While every precaution has been taken in the preparation of this manual, the publisher assumes no responsibility for errors or omissions. No part of this book covered by the copyrights hereon may be reproduced or copied in any form or by any means - graphic, electronic, or mechanical, including photocopying, taping, or information storage and retrieval systems - without written permission of the publisher.



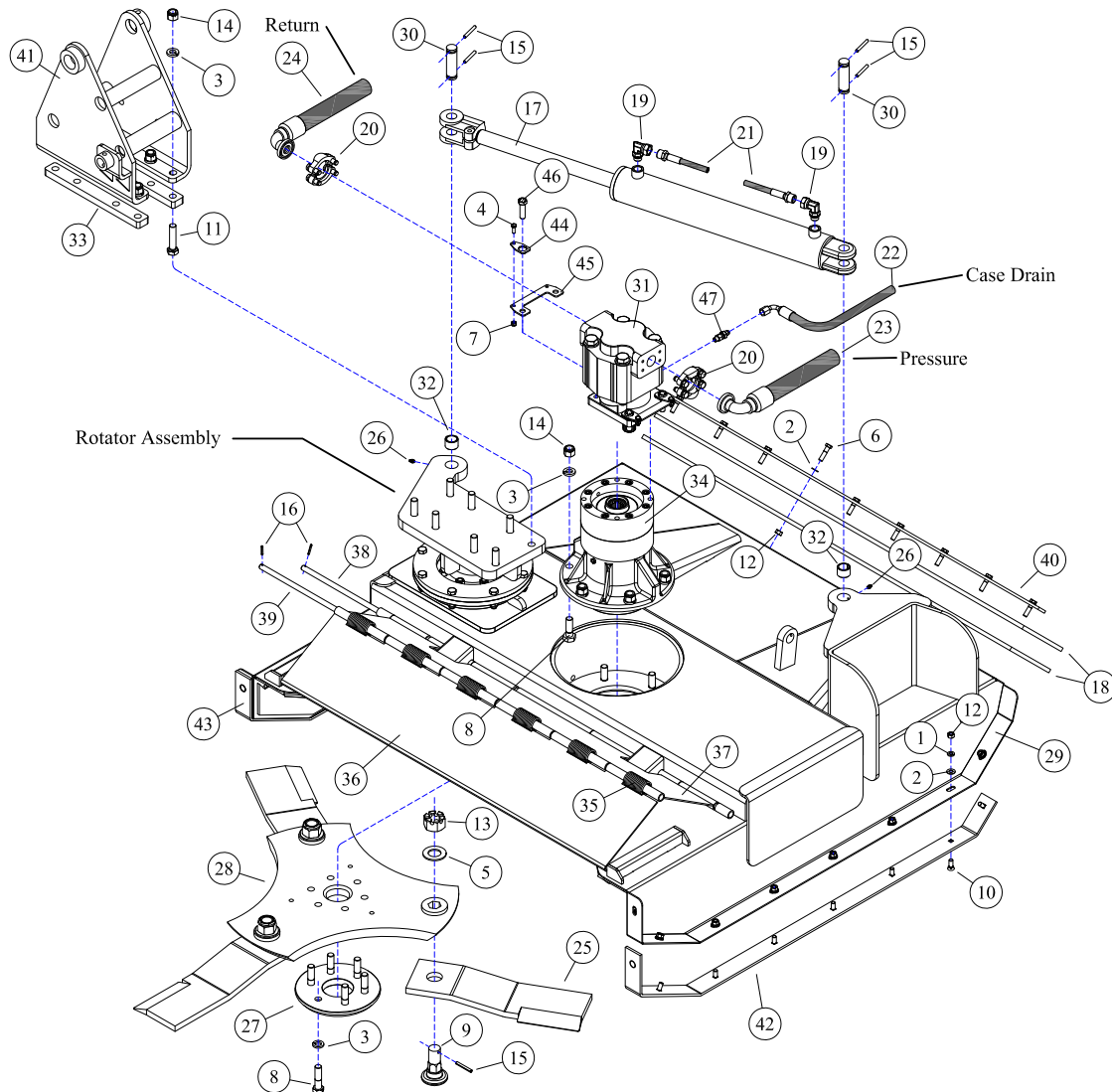
Table of Contents

| | |
|---|----|
| ROTARY HEADS | 4 |
| BOOM ROTARY HEAD - 50" DIRECT DRIVE, ROTATING DECK, RIGHT MOUNT..... | 5 |
| ROTARY HEAD - 50" DECK, DECAL IDENTIFICATION..... | 6 |
| BOOM ROTARY HEAD - 50" BLADE CONFIGURATIONS..... | 7 |
| SAW BLADE ATTACHMENT (OPTIONAL) - BOOM ROTARY HEADS 50"..... | 9 |
| HYDRAULIC TRAPDOOR (OPTIONAL) - BOOM ROTARY HEADS 50"..... | 10 |
| DECK ROTATOR (OPTIONAL) - BOOM ROTARY HEADS 50"..... | 11 |
| DRIVE ASSEMBLIES | 12 |
| DRIVE ASSEMBLY - 50" ROTARY MOWER (WHEEL LOADER POWERED BOOM ONLY)..... | 13 |
| DECK ASSEMBLIES | 14 |
| 30-0515 - MOTOR ASSEMBLY..... | 15 |
| 30-0532 - MOTOR ASSEMBLY..... | 16 |
| 35-0088 - DIRECT DRIVE SPINDLE..... | 17 |
| LIFT ASSEMBLIES | 18 |
| 14-0002 - 3X18 WELDED CYLINDER..... | 19 |
| 14-0010 - 2X8 TIE-ROD CYLINDER..... | 20 |

ROTARY HEADS



BOOM ROTARY HEAD - 50" DIRECT DRIVE, ROTATING DECK, RIGHT MOUNT

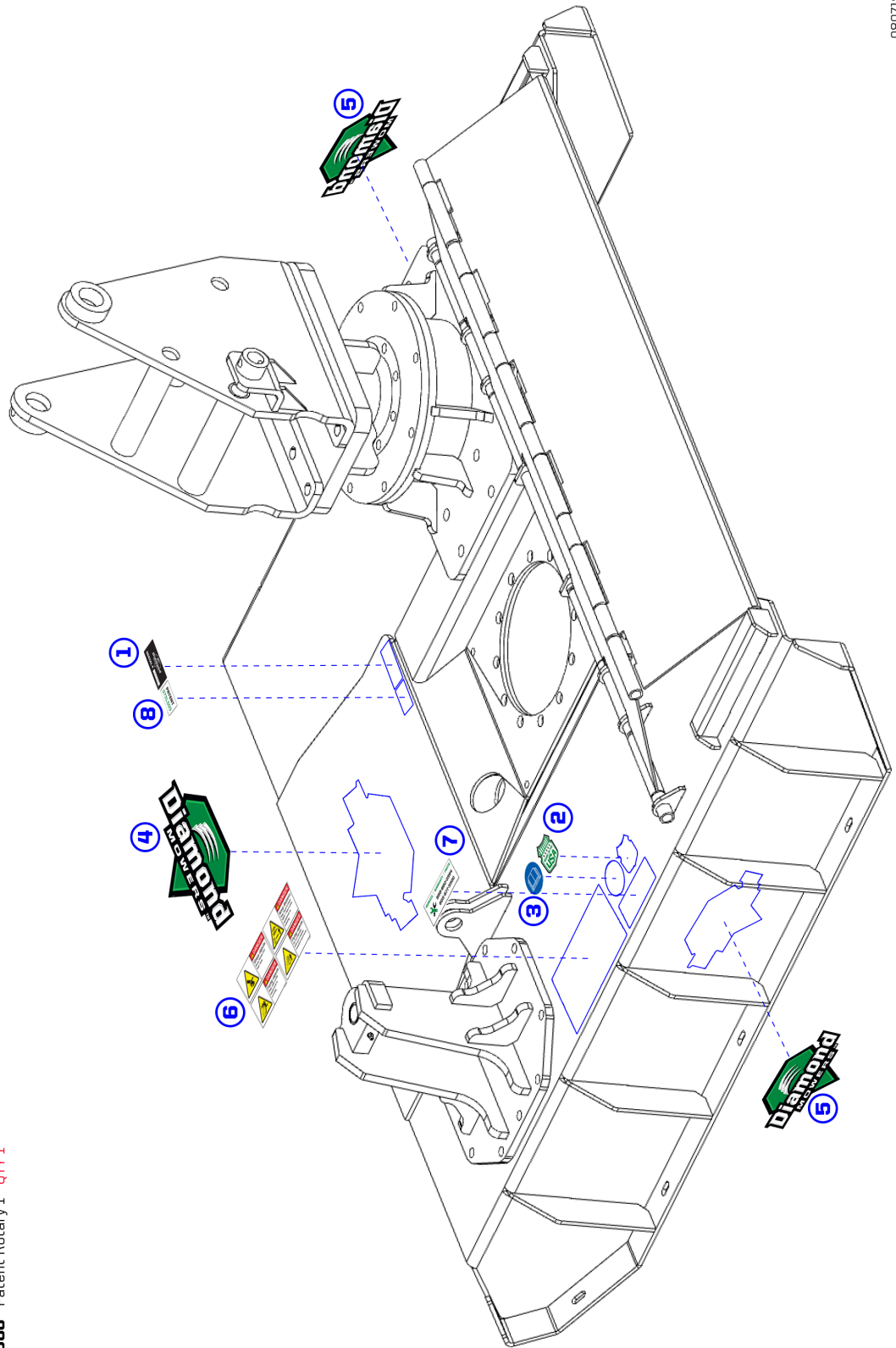


| REF# | PARTS DESCRIPTION | REQ | PART # |
|------|---|-----|---------|
| 1 | 3/8 LOCK WASHER | 16 | 11-0005 |
| 2 | 5/16 FLAT WASHER | 25 | 11-0015 |
| 3 | 5/8 H.S. LOCK WASHER | 20 | 11-0043 |
| 4 | 1/4 X 3/4 NC HEX CAP | 4 | 11-0588 |
| 5 | 1-1/8 SAE H.S. FLAT WASHER | 3 | 11-0057 |
| 6 | 3/8 X 1-3/4 NC HEX CAPSCREW | 9 | 11-0521 |
| 7 | 1/4 NC NYLOCK NUT | 4 | 11-1022 |
| 8 | 5/8 X 2-1/4 NF H.S. HEX CAPSCREW | 12 | 11-0691 |
| 9 | BLADE BOLT - HEX BASE | 3 | 11-0759 |
| 10 | PLOW BOLT | 16 | 11-0804 |
| 11 | 5/8 X 4 NF H.S. HEX CAPSCREW | 8 | 11-0908 |
| 12 | 3/8 NC HEX NUT | 25 | 11-1001 |
| 13 | 1-1/8 H.S. NF SLOTTED HEX NUT | 3 | 11-1050 |
| 14 | 5/8 H.S. NF STOVER NUT | 14 | 11-1143 |
| 15 | 1/4 X 2 ROLL PIN | 7 | 11-2005 |
| 16 | 5/32 X 1 ROLL PIN | 4 | 11-2054 |
| 17 | 3 X 18 CYLINDER | 1 | 14-0002 |
| 18 | FLAP | 2 | 18-0015 |
| 19 | 1/2ADJ-OR X 1/2FPPX-90DEG, ADAPTER | 2 | 21-1119 |
| 20 | #20 FLANGE KIT | 2 | 21-2105 |
| 21 | HOSE 1/4 X 77 (1/2MP X 5/16MJIC) | 2 | 21-2307 |
| 22 | HOSE 3/8 X 62 (3/8FJIC-90DEG X 1/2MJIC) | 1 | 21-4304 |
| 23 | HOSE 1 X 65 (1FJIC X #20FLG-90DEG) | 1 | 21-2516 |
| 24 | HOSE 1 X 57 (1FJIC X #20FLG-90DEG) | 1 | 21-2517 |
| 25 | 5/8" BRUSH BLADE | 3 | 22-0006 |

| REF# | PARTS DESCRIPTION | REQ | PART # |
|------|---|-----|---------|
| 26 | 1/4-28 GREASE ZERK | 2 | 23-0004 |
| 27 | BOLT PROTECTOR | 1 | 24-0004 |
| 28 | 50" TRI-HEX DISH | 1 | 24-0085 |
| 29 | 50" DECK SHELL | 1 | 25-0063 |
| 30 | CLEVIS PIN, 1 X 3-1/2 | 2 | 27-0004 |
| 31 | MOTOR 365" 1-1/2" GEARS, SPLINE SHAFT (Excluding wheelloader-powered booms.) | 1 | 30-0515 |
| 32 | BUSHING, 1-1/4 X 1 X 1 | 2 | 34-0005 |
| 33 | MAST SPACER, 3/4" | 2 | 34-0062 |
| 34 | SPINDLE ASSEMBLY | 1 | 35-0088 |
| 35 | TORSION SPRING | 6 | 36-0003 |
| 36 | FRONT SHIELD | 1 | 41-0007 |
| 37 | REAR SHIELD | 1 | 41-0008 |
| 38 | TRAP DOOR ROD, REAR | 1 | 41-0009 |
| 39 | TRAP DOOR ROD, FRONT | 1 | 41-0010 |
| 40 | FLAP RETAINING BAR | 1 | 41-0030 |
| 41 | MAST | 1 | 41-0195 |
| 42 | RIGHT SKID SHOE | 1 | 42-0007 |
| 43 | LEFT SKID SHOE | 1 | 42-0008 |
| 44 | MOTOR BOLT LOCK TAB | 4 | 31-0503 |
| 45 | MOTOR BOLT LOCK BASE | 2 | 31-0504 |
| 46 | 1/2-20 X 1-3/4 H.S. NF HEX CAP GR.8 | 4 | 11-0664 |
| 47 | ADAPTER, 1/4MOR X 3/8MJIC | 1 | 21-1597 |
| 48 | BLADE KIT (Includes 5, 9, 13, 15, & 25) | 1 | 44-0228 |

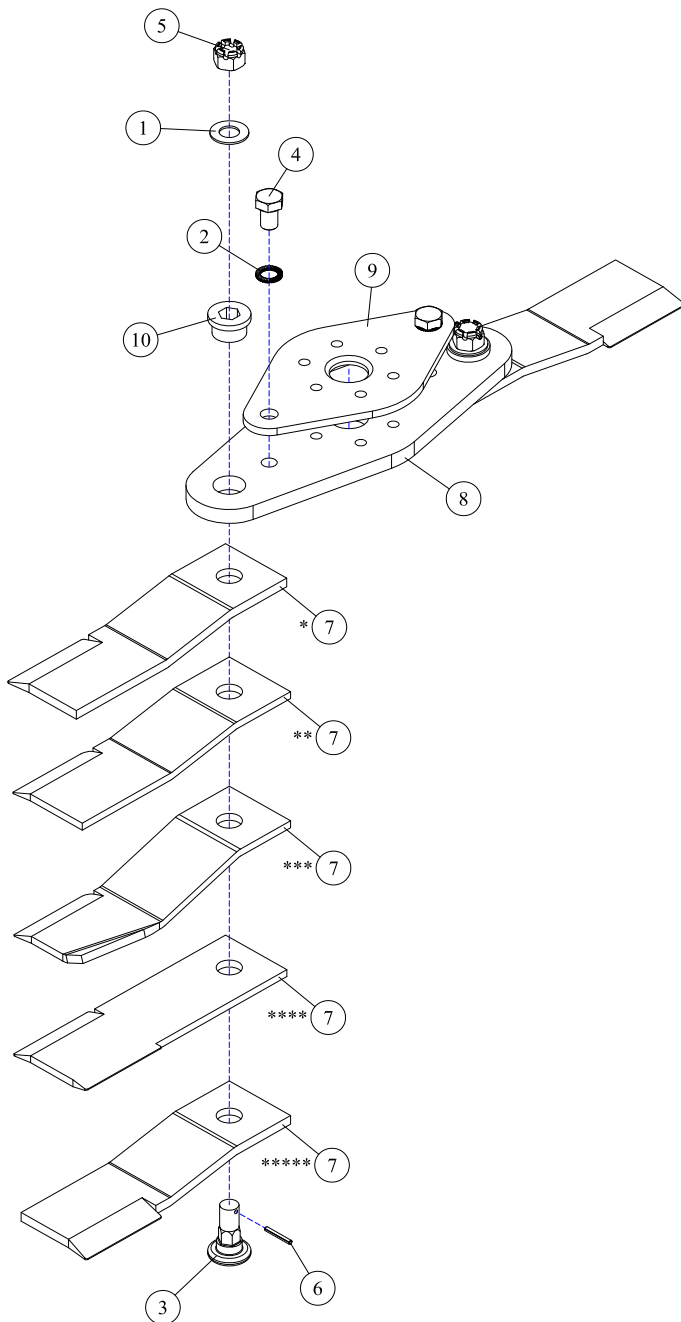
ROTARY HEAD - 50" DECK, DECAL IDENTIFICATION

080718

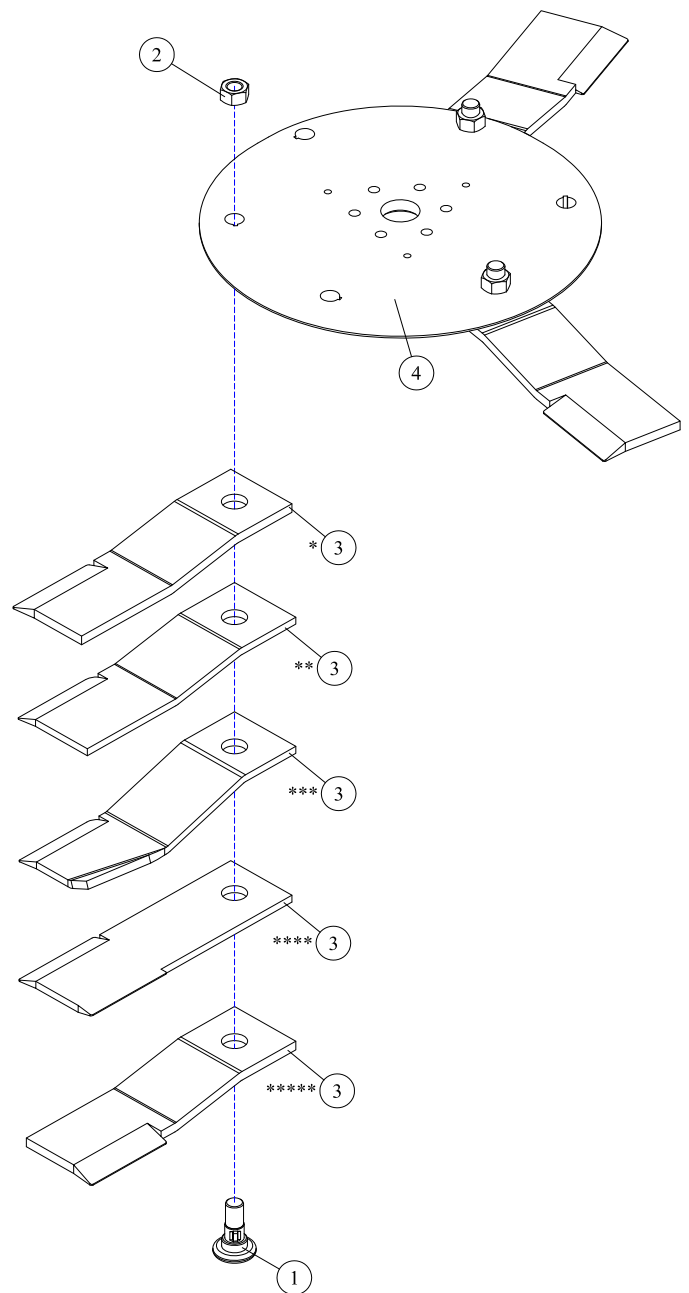


- ① SERIAL NUMBER LABEL - (not included in kit) - QTY 1
- ② PART #15-0055 - Made In USA - QTY 1
- ③ PART #15-0058 - Read Manual - QTY 1
- ④ PART #15-0053 - Diamond Mowers Logo 13" - QTY 1
- ⑤ PART #15-0050 - Diamond Mowers Logo 7" - QTY 2
- ⑥ PART #15-0057 - Decal Group Horizontal - QTY 1
- ⑦ PART #15-1016 - Warranty - QTY 1
- ⑧ PART #15-0066 - Patent Rotary 1 - QTY 1

BOOM ROTARY HEAD - 50" BLADE CONFIGURATIONS

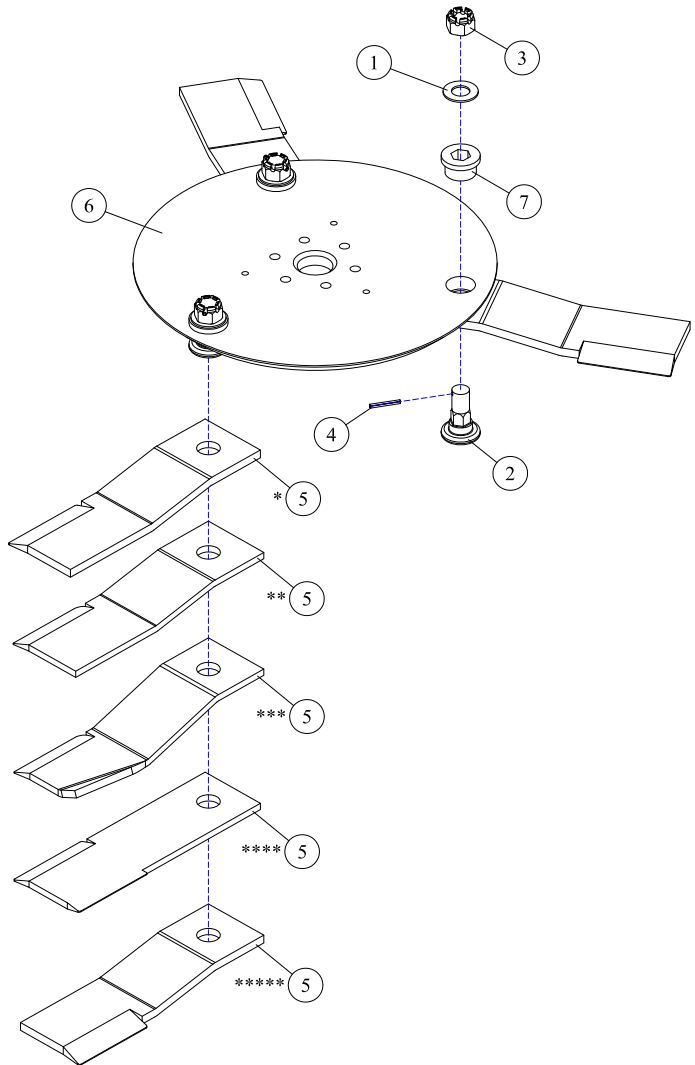
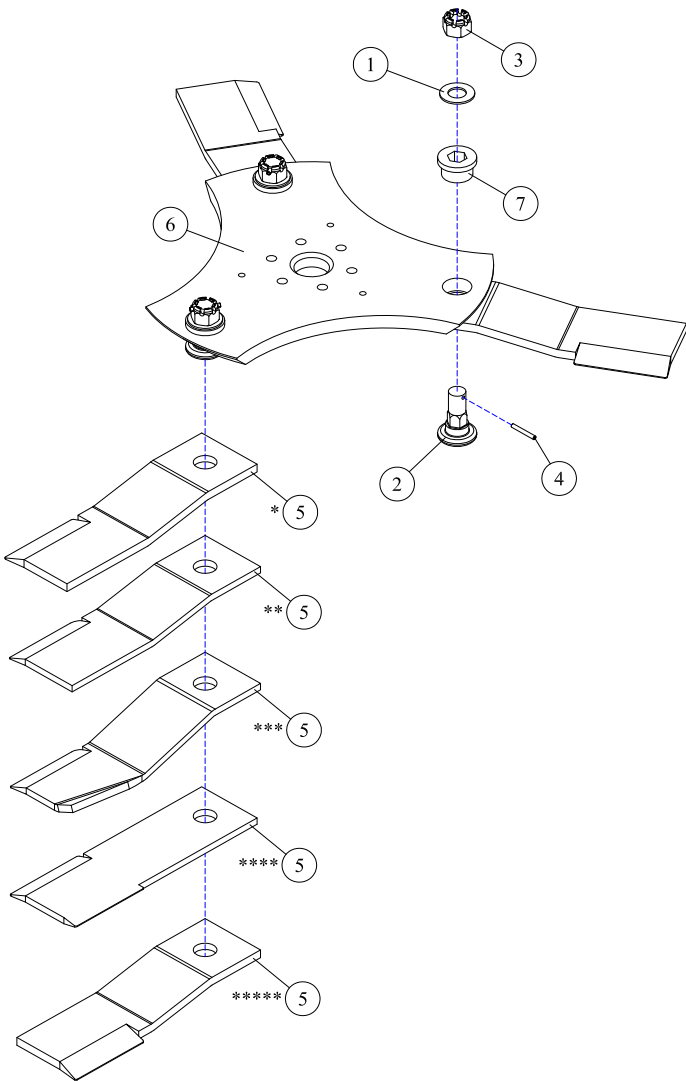


| REF# | PARTS DESCRIPTION | REQ | PART # |
|-------|---|-------|---------|
| 1 | 1-1/8 H.S. FLAT WASHER | 2 | 11-0057 |
| 2 | 1" NORDLOCK WASHER | 2 | 11-0059 |
| 3 | BLADE MOUNTING BOLT | 2 | 11-0759 |
| 4 | 1 X 1-1/2 NF H.S. HEX CAP | 2 | 11-0772 |
| 5 | BLADE MOUNTING NUT | 2 | 11-1050 |
| 6 | 1/4 X 2 ROLLPIN | 2 | 11-2005 |
| 7 | KNIFE | | |
| * | 50" BRUSH BLADE - 5/8" | 3 | 22-0006 |
| ** | 50" BRUSH KNIFE - 1/2" | 3 | 22-0003 |
| *** | 50" GRASS KNIFE, HIGH SUCTION - 1/2" | 3 | 22-0005 |
| **** | 50" BI-DIRECTIONAL BLADE - 1/2" | 3 | 22-0012 |
| ***** | 50" BRUSH KNIFE - REVERSE ROTATION - 5/8" | 3 | 22-0017 |
| 8 | BLADE BAR, BOTTOM | 1 | 24-0097 |
| 9 | BLADE BAR, TOP | 1 | 31-0097 |
| 10 | REPLACEABLE HEX INSERT | Avail | 90-7010 |



| REF# | PARTS DESCRIPTION | REQ | PART # |
|-------|---|-----|---------|
| 1 | BLADE BOLT - 1-1/8 KEYED | 3 | 11-0503 |
| 2 | 1-1/8 NF NYLOCK NUT | 3 | 11-1008 |
| 3 | KNIFE | | |
| * | 50" BRUSH BLADE - 5/8" | 3 | 22-0006 |
| ** | 50" BRUSH KNIFE - 1/2" | 3 | 22-0003 |
| *** | 50" GRASS KNIFE, HIGH SUCTION - 1/2" | 3 | 22-0005 |
| **** | 50" BI-DIRECTIONAL BLADE - 1/2" | 3 | 22-0012 |
| ***** | 50" BRUSH KNIFE - REVERSE ROTATION - 5/8" | 3 | 22-0017 |
| 4 | BLADE DISH | 1 | 24-0002 |

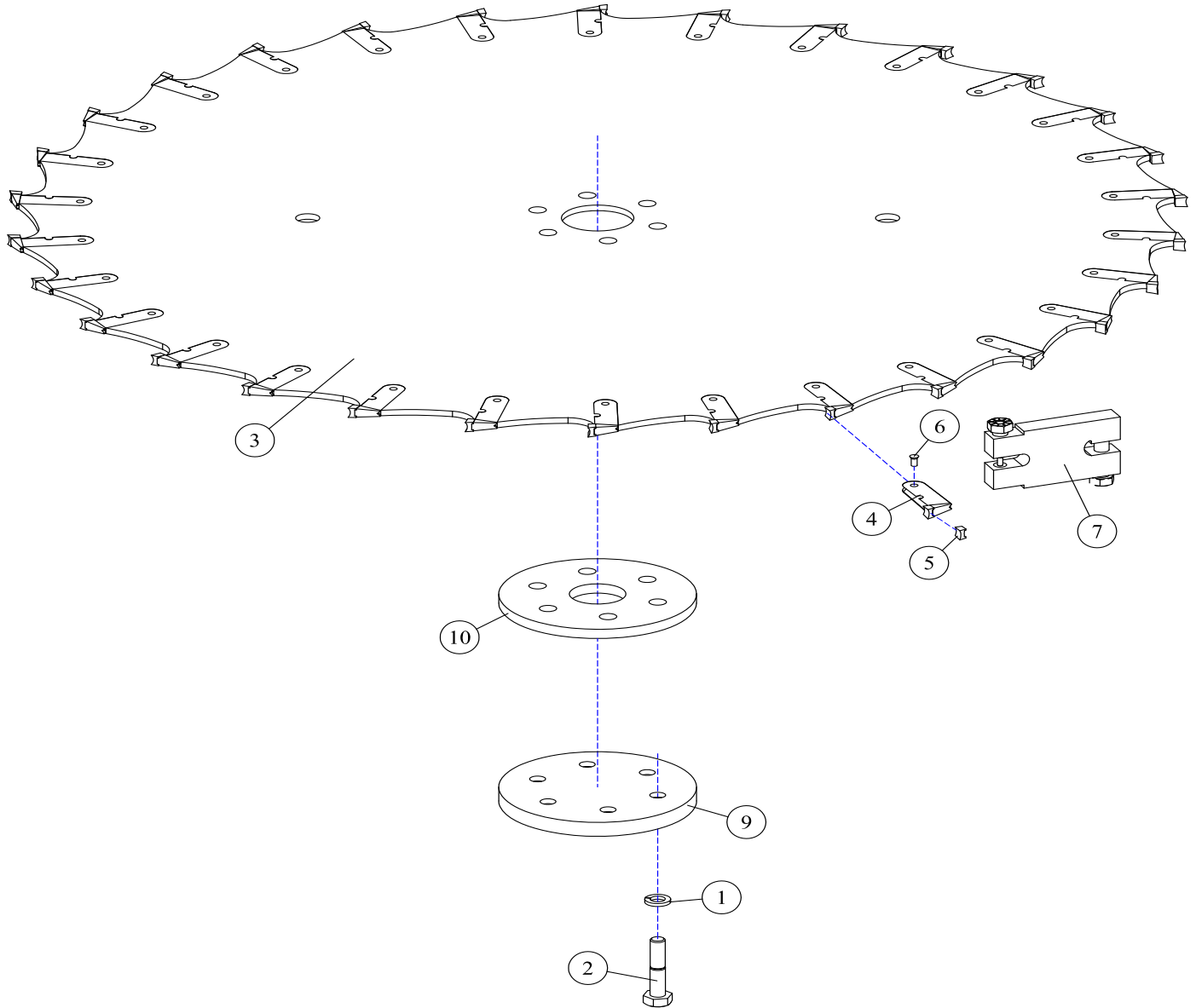
BOOM ROTARY HEAD - 50" BLADE CONFIGURATIONS



| REF# | PARTS DESCRIPTION | REQ | PART # |
|-------|---|-------|---------|
| 1 | 1-1/8 H.S FLAT WASHER | 3 | 11-0057 |
| 2 | BLADE MOUNTING BOLT | 3 | 11-0759 |
| 3 | BLADE MOUNTING NUT | 3 | 11-1050 |
| 4 | ROLLPIN | 3 | 11-2005 |
| 5 | KNIFE | | |
| * | 50" BRUSH BLADE - 5/8" | 3 | 22-0006 |
| ** | 50" BRUSH KNIFE - 1/2" | 3 | 22-0003 |
| *** | 50" GRASS KNIFE, HIGH SUCTION - 1/2" | 3 | 22-0005 |
| **** | 50" BI-DIRECTIONAL BLADE - 1/2" | 3 | 22-0012 |
| ***** | 50" BRUSH KNIFE - REVERSE ROTATION - 5/8" | 3 | 22-0017 |
| 6 | D3 50" TRI-HEX DISH | 1 | 24-0085 |
| 7 | REPLACEABLE HEX INSERT | Avail | 90-7010 |

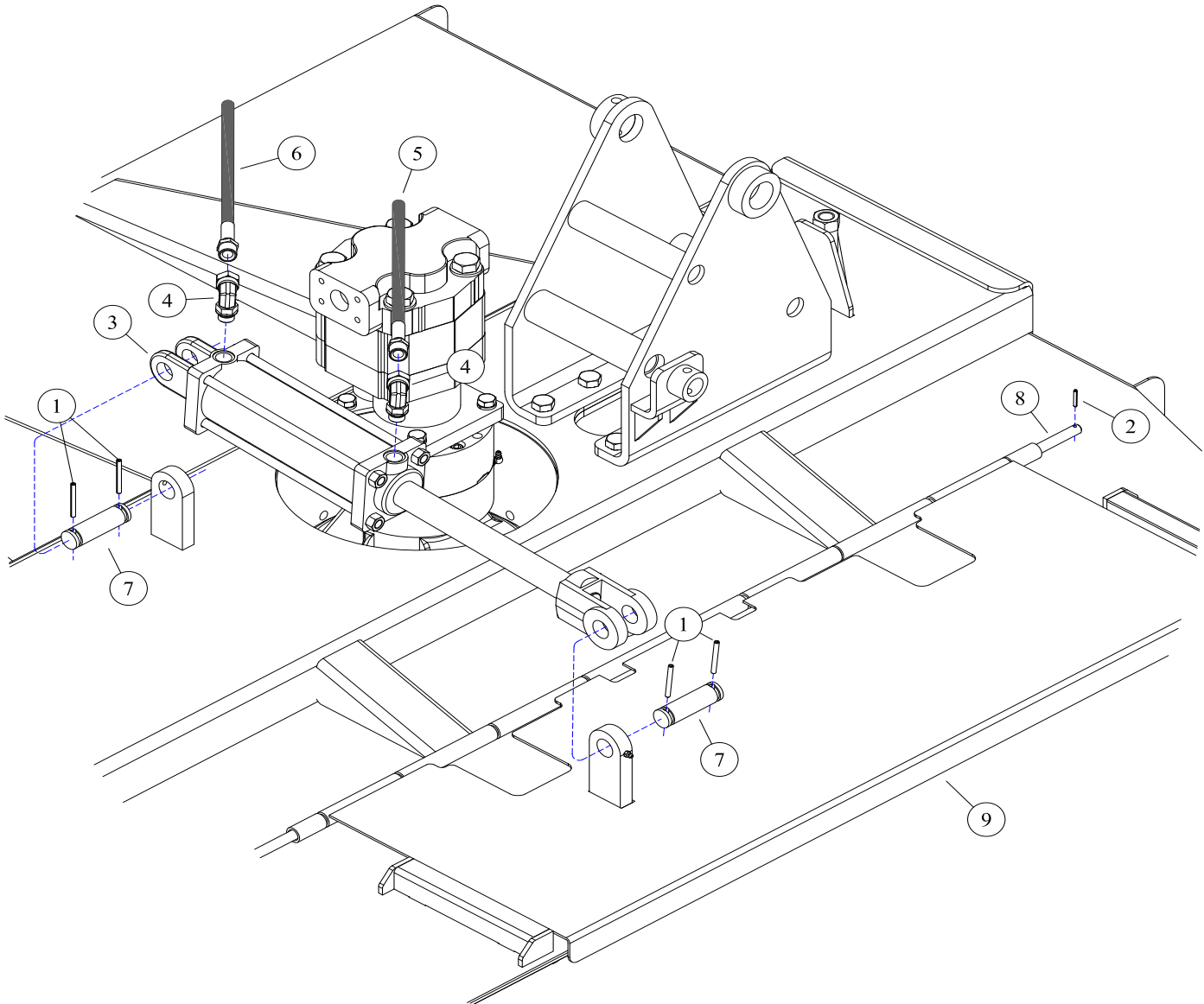
| REF# | PARTS DESCRIPTION | REQ | PART # |
|-------|---|-------|---------|
| 1 | 1-1/8 H.S FLAT WASHER | 3 | 11-0057 |
| 2 | BLADE MOUNTING BOLT | 3 | 11-0759 |
| 3 | BLADE MOUNTING NUT | 3 | 11-1050 |
| 4 | ROLLPIN | 3 | 11-2005 |
| 5 | KNIFE | | |
| * | 50" BRUSH BLADE - 5/8" | 3 | 22-0006 |
| ** | 50" BRUSH KNIFE - 1/2" | 3 | 22-0003 |
| *** | 50" GRASS KNIFE, HIGH SUCTION - 1/2" | 3 | 22-0005 |
| **** | 50" BI-DIRECTIONAL BLADE - 1/2" | 3 | 22-0012 |
| ***** | 50" BRUSH KNIFE - REVERSE ROTATION - 5/8" | 3 | 22-0017 |
| 6 | D3 50" ROUND DISH | 1 | 24-0100 |
| 7 | REPLACEABLE HEX INSERT | Avail | 90-7010 |

SAW BLADE ATTACHMENT (OPTIONAL) - BOOM ROTARY HEADS 50"



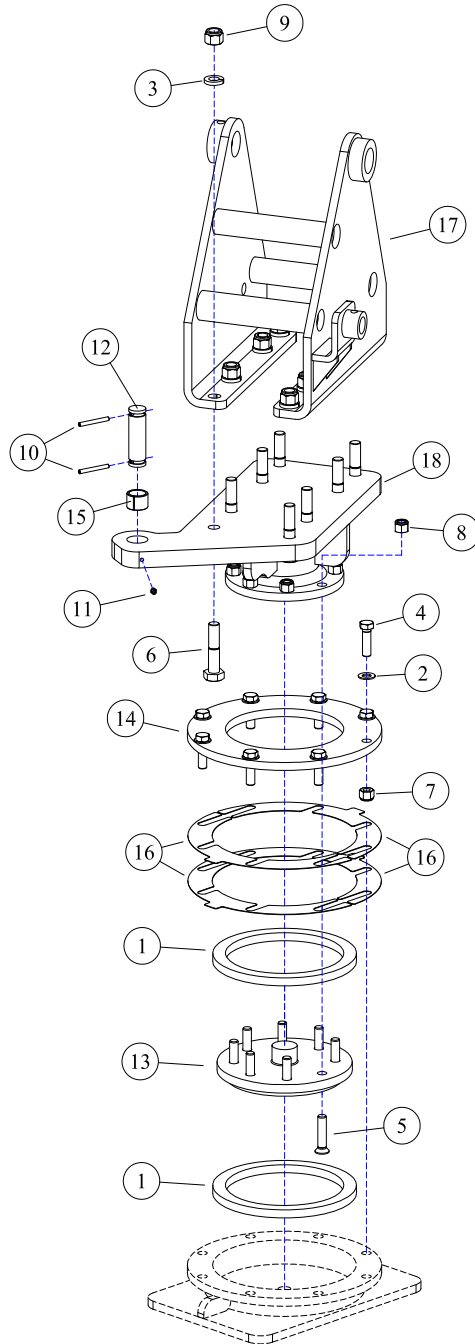
| REF# | PARTS DESCRIPTION | REQ | PART # |
|------|-----------------------------|-------|---------|
| 1 | 5/8 H.S. LOCK WASHER | 6 | 11-0043 |
| 2 | 5/8 X 2 NF H.S. CAPSCREW | 6 | 11-0508 |
| 3 | 48" SAW BLADE | 1 | 22-3001 |
| 4 | CARBIDE TIP HOLDER | 30 | 22-3002 |
| 5 | CARBIDE REPLACEMENT TIP | 30 | 22-3004 |
| 6 | RIVET | 30 | 22-3005 |
| 7 | RIVET REMOVAL TOOL | Avail | 22-3006 |
| 8 | SHARPENING TOOL (NOT SHOWN) | Avail | 22-3007 |
| 9 | BOLT PROTECTOR | 1 | 24-0004 |
| 10 | BOLT PROTECTOR SPACER | 1 | 24-0215 |

HYDRAULIC TRAPDOOR (OPTIONAL) - BOOM ROTARY HEADS 50"



| REF# | PARTS DESCRIPTION | REQ | PART # |
|------|-----------------------------------|-----|---------|
| 1 | 1/4 X 2 ROLL PIN | 4 | 11-2005 |
| 2 | 5/32 X 1 ROLL PIN | 2 | 11-2054 |
| 3 | 2 X 8 CYLINDER | 1 | 14-0010 |
| 4 | 1/2ADJ-OR X 1/2FPX-90DEG, FITTING | 2 | 21-1119 |
| 5 | HOSE 1/4 X 77 (1/2MP X 5/16MJIC) | 1 | 21-2307 |
| 6 | HOSE 1/4 X 66 (1/2MP X 5/16MJIC) | 1 | 21-2405 |
| 7 | CLEVIS PIN, 1 X 3-1/2 | 2 | 27-0004 |
| 8 | TRAP DOOR ROD, REAR | 1 | 41-0009 |
| 9 | HYDRAULIC SHIELD | 1 | 41-0222 |

DECK ROTATOR (OPTIONAL) - BOOM ROTARY HEADS 50"



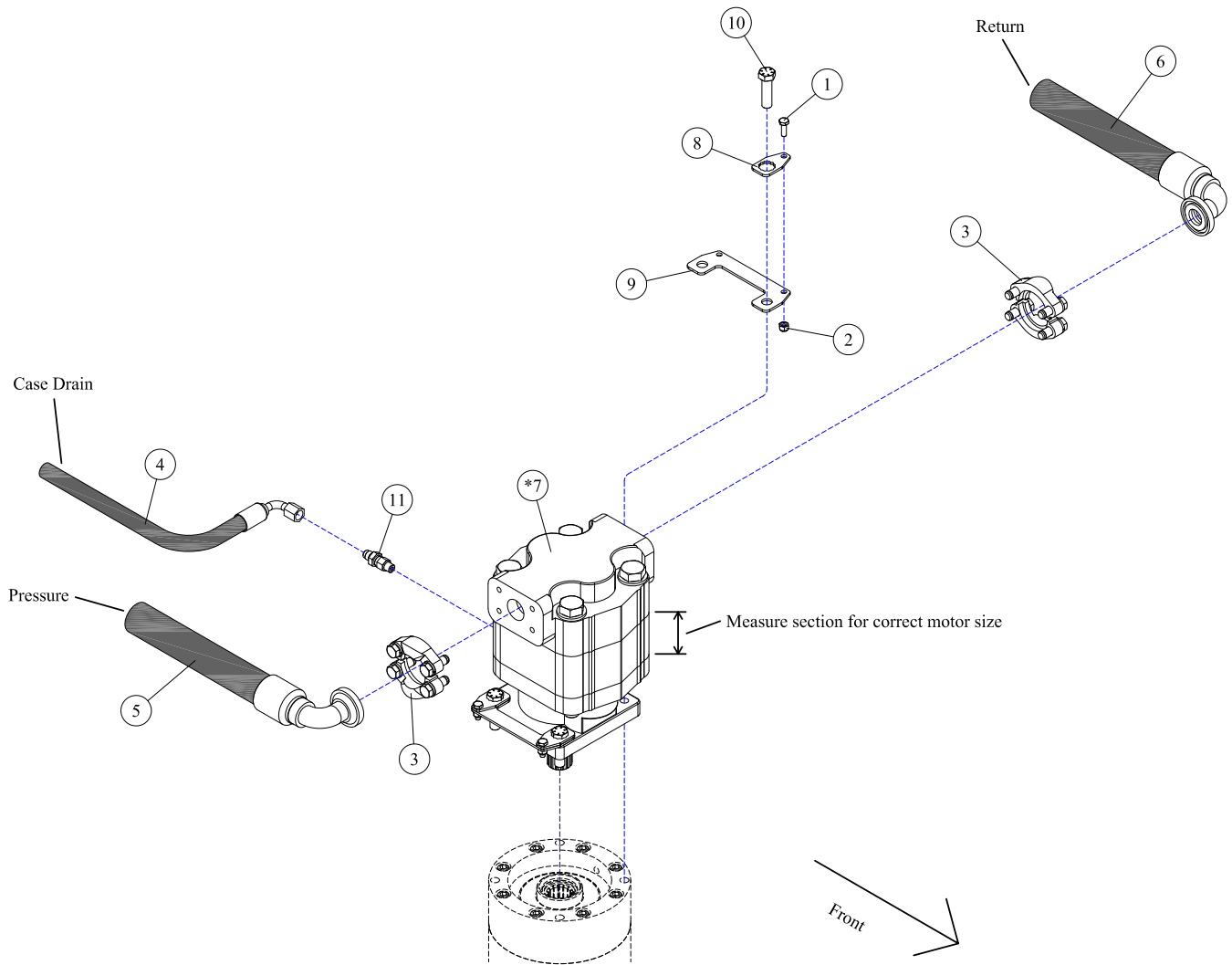
| REF# | PARTS DESCRIPTION | REQ | PART # |
|------|-------------------------------------|-----|---------|
| 1 | NYLON BUSHING | 2 | 10-0044 |
| 2 | 1/2 H.S. FLAT WASHER | 8 | 11-0042 |
| 3 | 5/8 H.S. LOCK WASHER | 8 | 11-0043 |
| 4 | 1/2 X 1-3/4 H.S. NC HEX CAPSCREW | 8 | 11-0747 |
| 5 | 1/2 X 2-1/4 NF FLAT HEAD SKT HD CAP | 8 | 11-0766 |
| 6 | 5/8 X 3 H.S. NF HEX CAPSCREW | 8 | 11-0768 |
| 7 | 1/2 NC NYLOCK NUT | 8 | 11-1018 |
| 8 | 1/2 NF NYLOCK NUT | 8 | 11-1028 |
| 9 | 5/8 H.S. NF STOVER NUT | 8 | 11-1143 |
| 10 | 1/4 X 2 ROLL PIN | 2 | 11-2005 |

| REF# | PARTS DESCRIPTION | REQ | PART # |
|------|---------------------------|-----|---------|
| 11 | GREASE ZERK | 1 | 23-0004 |
| 12 | CLEVIS PIN | 1 | 27-0004 |
| 13 | PIVOT DECK BOLT-ON PLATE | 1 | 31-0073 |
| 14 | PIVOT DECK COVER PLATE | 1 | 31-0074 |
| 15 | BUSHING | 1 | 34-0005 |
| 16 | SHIM | 4 | 34-0078 |
| 17 | MAST | 1 | 41-0195 |
| 18 | PIVOT ARM | | |
| | PIVOT ARM - RIGHT (SHOWN) | 1 | 41-0475 |
| | PIVOT ARM - LEFT | 1 | 41-0505 |

DRIVE ASSEMBLIES



DRIVE ASSEMBLY - 50" ROTARY MOWER (WHEEL LOADER POWERED BOOM ONLY)



* Note: These are the flow rates AFTER the oil has passed through the 4:1 divider.

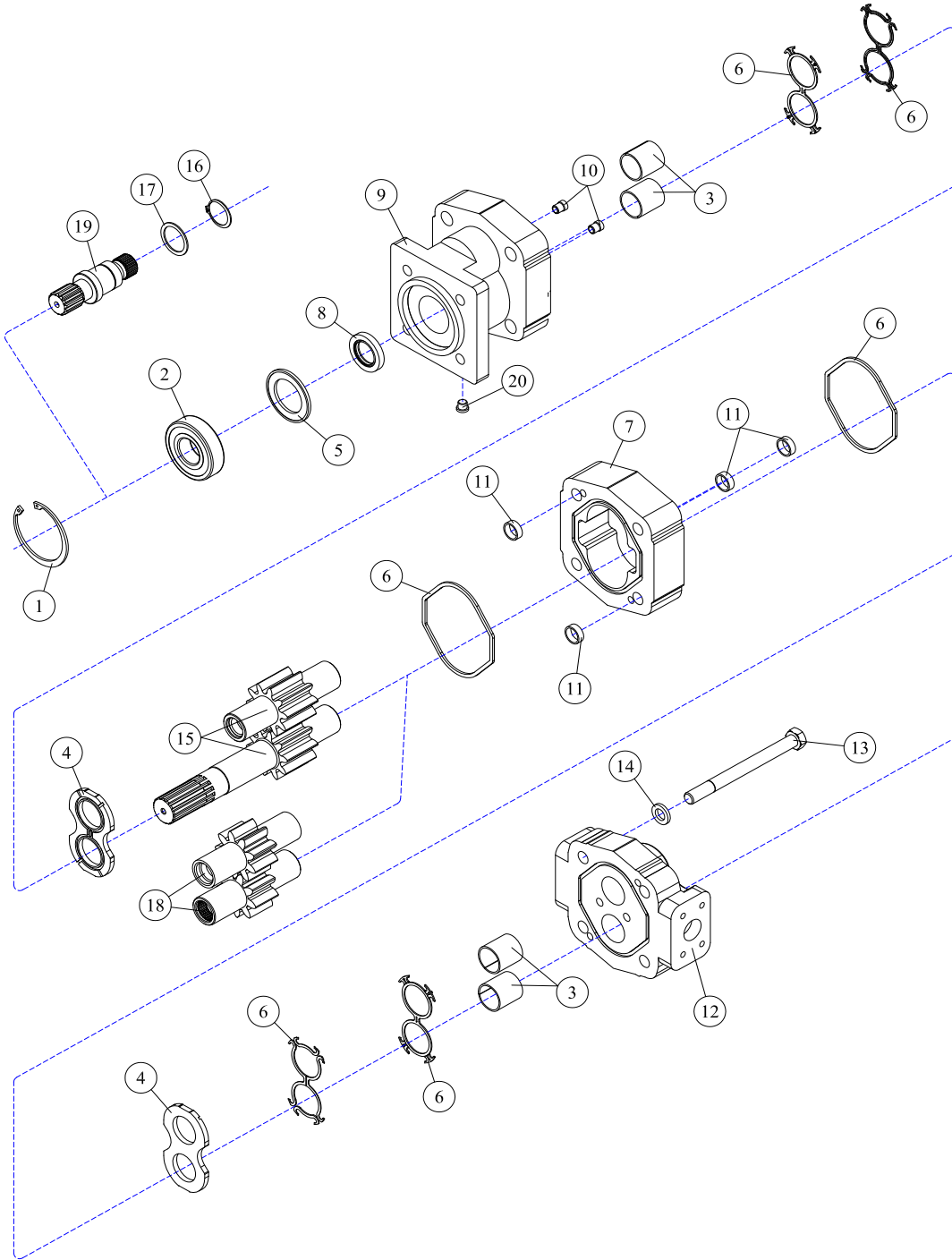
| REF# | PARTS DESCRIPTION | REQ | PART # |
|------|---|-----|---------|
| 1 | 1/4 X 3/4 NC HEX CAP | 4 | 11-0588 |
| 2 | 1/4 NC NYLOCK NUT | 4 | 11-1022 |
| 3 | #20 FLANGE KIT | 2 | 21-2105 |
| 4 | HOSE 3/8 X 62 (3/8FJIC-90DEG X 1/2MJIC) | 1 | 21-4304 |
| 5 | HOSE 1 X 65 (1FJIC X #20FLG-90DEG) | 1 | 21-2516 |
| 6 | HOSE 1 X 57 (1FJIC X #20FLG-90DEG) | 1 | 21-2517 |

| REF# | PARTS DESCRIPTION | REQ | PART # |
|------|--|-----|---------|
| * 7 | MOTOR | | |
| | M365, 1-1/4" GEAR SET, 1-3/4" SECT, 30-39 GAL/MIN | 1 | 30-0532 |
| | M365, 1-1/2" GEAR SET, 2" SECT, 40-45 GAL/MIN | 1 | 30-0515 |
| 8 | MOTOR BOLT LOCK TAB | 4 | 31-0503 |
| 9 | MOTOR BOLT LOCK BASE | 2 | 31-0504 |
| 10 | 1/2-20 X 1-3/4 H.S. NF HEX CAP GR.8 | 4 | 11-0664 |
| 11 | ADAPTER, 1/4MOR X 3/8MJIC | 1 | 21-1597 |

DECK ASSEMBLIES



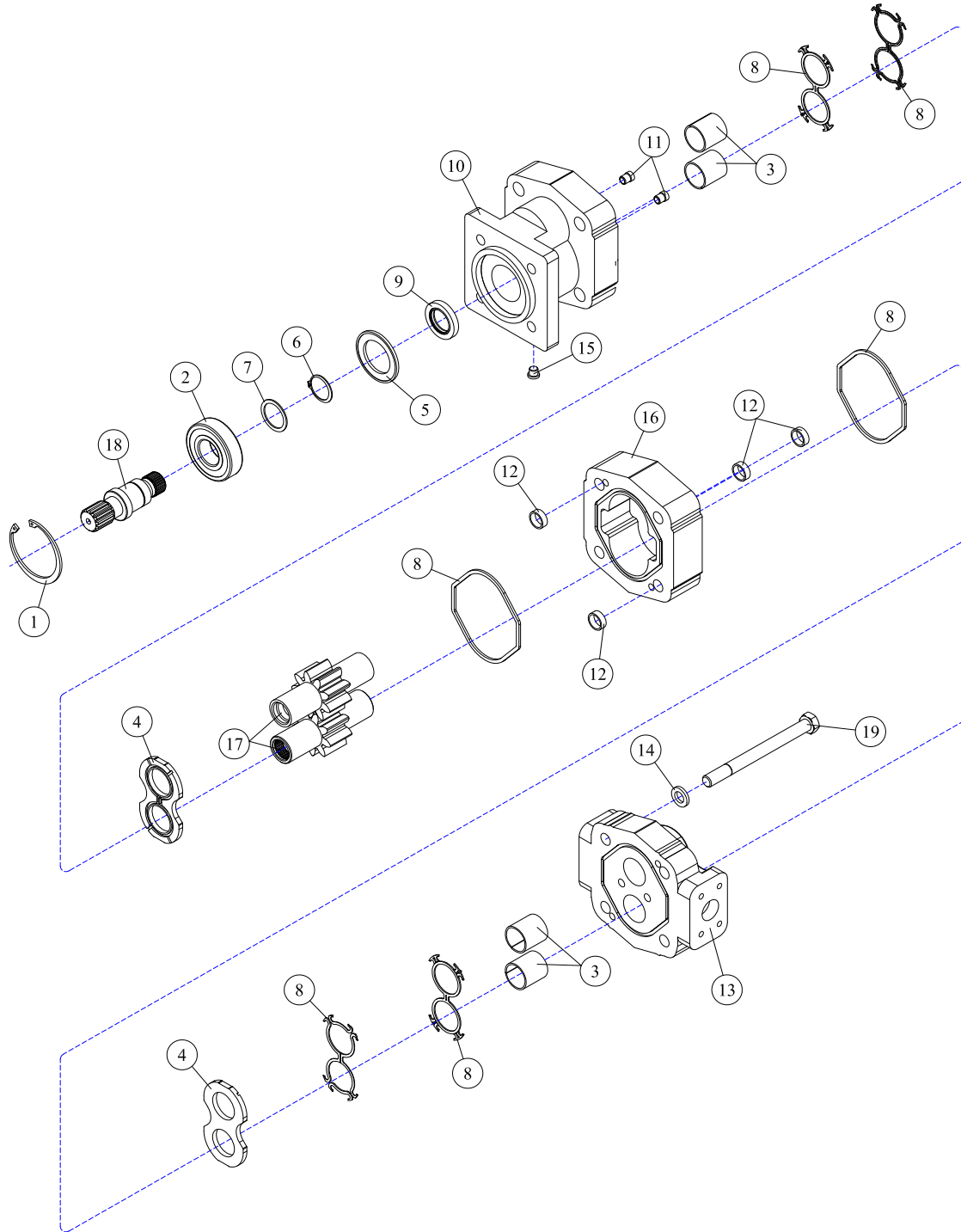
30-0515 - MOTOR ASSEMBLY



| REF# | PARTS DESCRIPTION | REQ | PART # |
|------|-------------------------------------|-------|---------|
| 1 | SNAP RING | 1 | 30-1009 |
| 2 | OUTBOARD BEARING | 1 | 30-1010 |
| 3 | BUSHING | 4 | 30-1011 |
| 4 | THRUST PLATE | 2 | 30-1012 |
| 5 | SEAL RETAINER | 1 | 30-1017 |
| 6 | M365 SEAL KIT | Avail | 30-1021 |
| 7 | GEAR HOUSING | 1 | 30-1023 |
| 8 | SHAFT SEAL | | |
| | 150 PSI (included in M365 seal kit) | 1 | 30-1210 |
| | 500 PSI | 1 | 30-1156 |
| 9 | SHAFT END COVER | 1 | 30-1086 |
| 10 | CHECK ASSEMBLY | 2 | 30-1087 |
| 11 | ALIGNMENT BUSHING | 4 | 30-1090 |

| REF# | PARTS DESCRIPTION | REQ | PART # |
|------|----------------------------------|-------|---------|
| 12 | PORT END COVER | 1 | 30-1091 |
| 13 | STUD | 4 | 30-1092 |
| 14 | WASHER | 4 | 30-1093 |
| | GEAR SET OPTION A: | | |
| 15 | 1-1/2" GEAR SET | 1 | 30-1159 |
| | GEAR SET OPTION B: | | |
| 16 | RETAINING RING | 1 | 30-1019 |
| 17 | WASHER | 1 | 30-1020 |
| 18 | 1-1/2" GEAR SET | 1 | 30-1022 |
| 19 | CONTINENTAL SHAFT, SPLINED | 1 | 30-1144 |
| 20 | PLUG | 1 | 30-1096 |
| * | SEAL APPLICATOR TOOL (not shown) | Avail | 30-1048 |

30-0532 - MOTOR ASSEMBLY



| REF# | PARTS DESCRIPTION | REQ | PART # |
|------|-------------------------------------|-------|---------|
| 1 | SNAP RING | 1 | 30-1009 |
| 2 | OUTBOARD BEARING | 1 | 30-1010 |
| 3 | BUSHING | 4 | 30-1011 |
| 4 | THRUST PLATE | 2 | 30-1012 |
| 5 | SEAL RETAINER | 1 | 30-1017 |
| 6 | RETAINING RING | 1 | 30-1019 |
| 7 | WASHER | 1 | 30-1020 |
| 8 | M365 SEAL KIT | Avail | 30-1021 |
| 9 | 150 PSI (included in M365 seal kit) | 1 | 30-1210 |
| 10 | SHAFT END COVER | 1 | 30-1086 |

| REF# | PARTS DESCRIPTION | REQ | PART # |
|------|----------------------------|-----|---------|
| 11 | CHECK ASSEMBLY | 2 | 30-1087 |
| 12 | ALIGNMENT BUSHING | 4 | 30-1090 |
| 13 | PORT END COVER | 1 | 30-1091 |
| 14 | WASHER | 4 | 30-1093 |
| 15 | PLUG | 1 | 30-1096 |
| 16 | GEAR HOUSING | 1 | 30-1195 |
| 17 | 1-1/4" GEAR SET | 1 | 30-1194 |
| 18 | CONTINENTAL SHAFT, SPLINED | 1 | 30-1144 |
| 19 | STUD | 4 | Call |

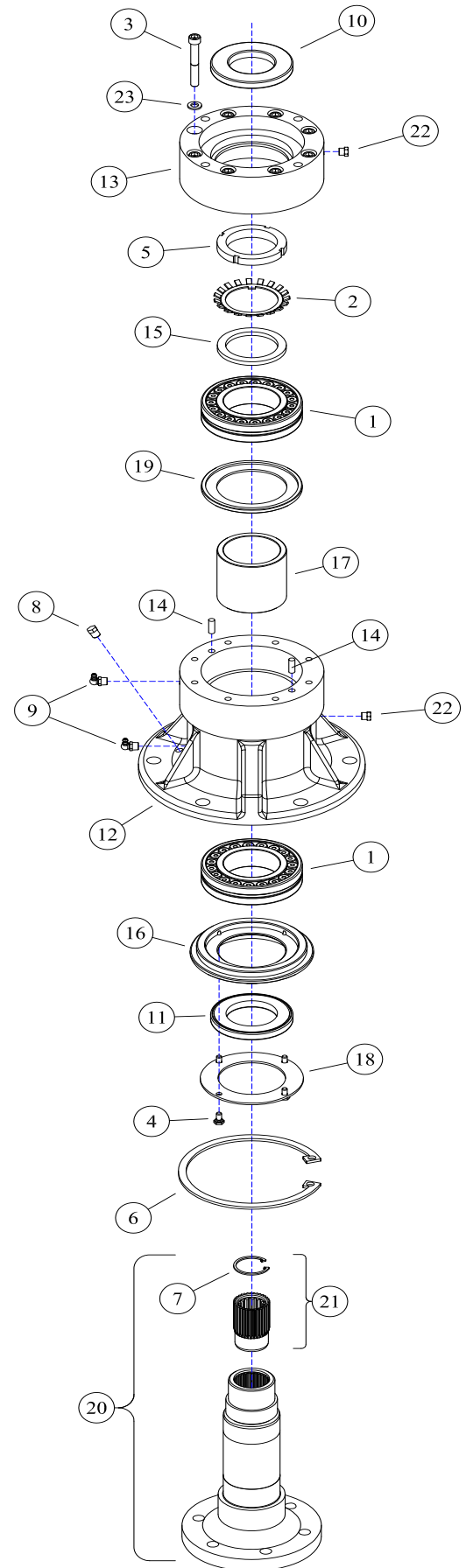
35-0088 - DIRECT DRIVE SPINDLE

Grease with #2 lithium based grease every 500hrs.
Use 10 pumps (.44oz) into each of the two grease zerk.

Warning: Do not overgrease
Overgreasing will cause damage or premature failure of the bearings, housing & seals.

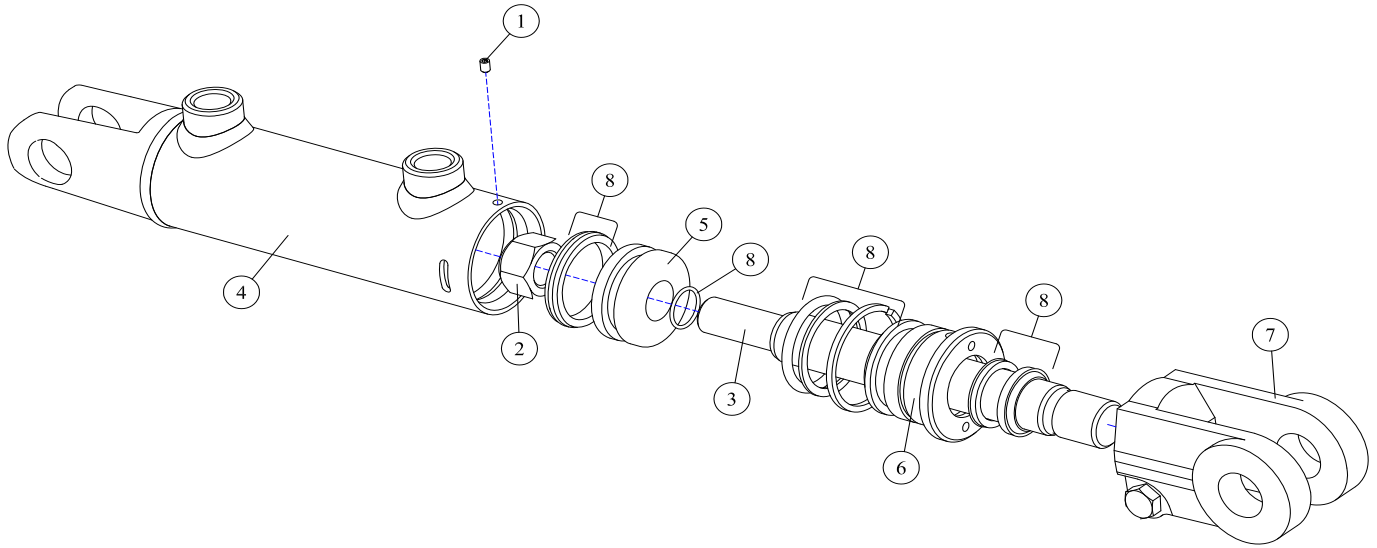
| REF# | PARTS DESCRIPTION | REQ | PART # |
|------|----------------------------------|-----|---------|
| 1 | BEARING | 2 | 10-0055 |
| 2 | LOCKING WASHER | 1 | 11-0048 |
| 3 | 3/8 X 2-3/4 NC SKT HEAD CAPSCREW | 8 | 11-0703 |
| 4 | 1/4 X 1/2 NC CAPSCREW | 4 | 11-0741 |
| 5 | 2-1/2 SPANNER NUT | 1 | 11-1037 |
| 6 | LARGE SNAP RING | 1 | 11-2021 |
| 7 | SMALL SNAP RING | 1 | 11-2022 |
| 8 | PIPE PLUG | 1 | 21-1136 |
| 9 | 1/8 X 90 GREASE ZERK | 2 | 23-0005 |
| 10 | UPPER SEAL | 1 | 33-0035 |
| 11 | LOWER SEAL | 1 | 33-0057 |
| 12 | SPINDLE HOUSING | 1 | 35-0021 |
| 13 | SEAL/MOTOR MOUNT | 1 | 35-0022 |
| 14 | ALIGNMENT PIN | 2 | 35-0032 |
| 15 | SPACER | 1 | 35-0050 |
| 16 | BOTTOM SEAL PLATE | 1 | 35-0063 |
| 17 | SPACER | 1 | 35-0064 |
| 18 | BOTTOM PLATE | 1 | 35-0065 |
| 19 | GREASE CATCH | 1 | 35-0066 |
| 20 | SPINDLE SHAFT COMPLETE | 1 | 35-0090 |
| *21 | SPLINED INSERT KIT | 1 | 35-0091 |
| 22 | BREATHER | 2 | 80-1016 |
| 23 | 3/8 LOCK WASHER GR 5 | 8 | 11-0005 |

* The splined insert kit includes the insert removal tool 11-0913.



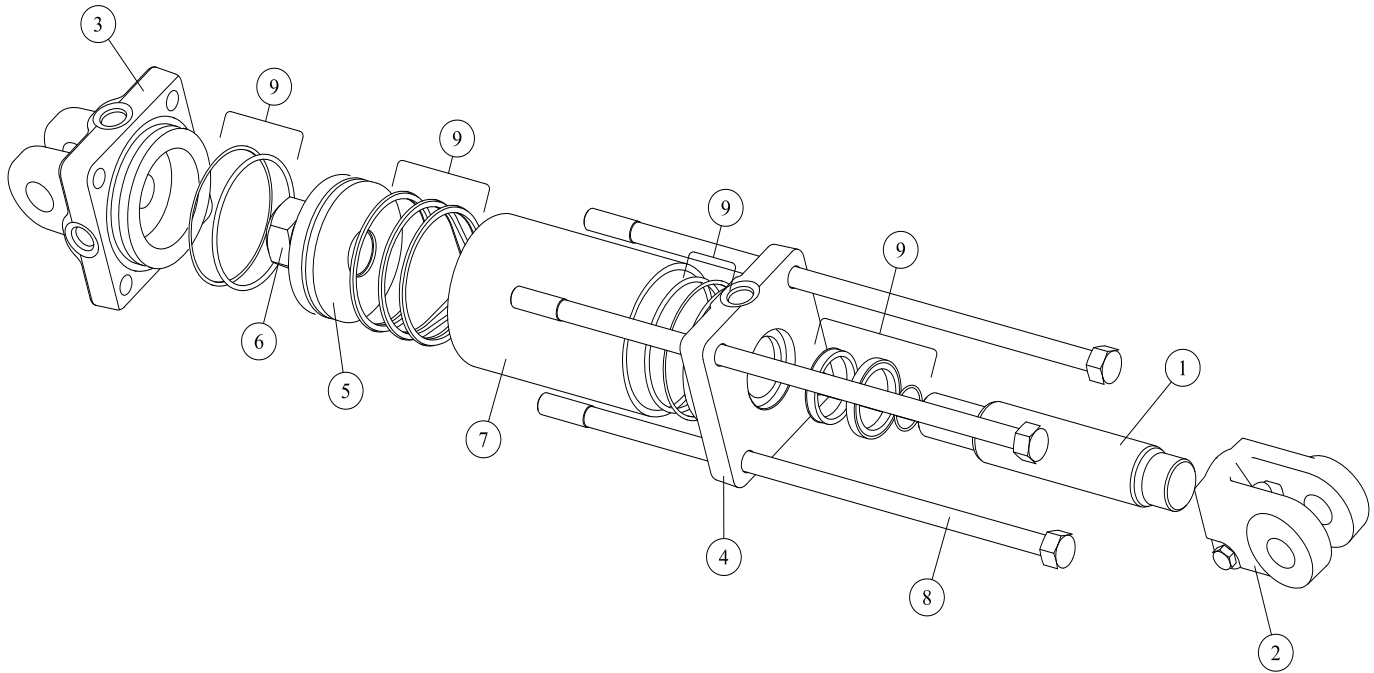
LIFT ASSEMBLIES



14-0002 - 3X18 WELDED CYLINDER

| REF# | PARTS DESCRIPTION | REQ | PART # |
|------|-------------------------|-----|---------|
| 1 | 1/4-20 UNC-3/8 SETSCREW | 1 | 11-2014 |
| 2 | LOCKNUT | 1 | 14-1120 |
| 3 | PISTON ROD | 1 | 14-1132 |
| 4 | BUTT & TUBE ASSEMBLY | 1 | 14-1142 |
| 5 | PISTON | 1 | 14-1150 |
| 6 | GLAND | 1 | 14-1155 |
| 7 | CLEVIS ASSEMBLY | 1 | 14-1160 |
| 8 | SEAL KIT | 1 | 33-0038 |

14-0010 - 2X8 TIE-ROD CYLINDER



| REF# | PARTS DESCRIPTION | REQ | PART # |
|------|-------------------|-----|---------|
| 1 | PISTON ROD | 1 | 14-1066 |
| 2 | CLEVIS ASSEMBLY | 1 | 14-1064 |
| 3 | BUTT | 1 | 14-1062 |
| 4 | GLAND | 1 | 14-1063 |
| 5 | PISTON | 1 | 14-1067 |
| 6 | LOCKNUT | 1 | 14-1068 |
| 7 | TUBE | 1 | 14-1172 |
| 8 | TIE-ROD ASSEMBLY | 4 | 14-1069 |
| 9 | SEAL KIT | 1 | 33-0025 |

(PAGE INTENTIONALLY BLANK)



**100% SATISFACTION
GUARANTEE**
★ GET IT, LOVE IT, *or* LEAVE IT! ★

**72-HOUR PARTS
SHIPPING GUARANTEE**