



# PARTS BOOK

## ROTARY HEADS

• 40" CUT • EXCAVATOR MOUNT • 5.10.18 •

DIAMOND MOWERS, LLC  
350 E 60<sup>th</sup> St. North  
Sioux Falls, SD 57104

FOR WARRANTY CALL DIAMOND MOWERS DIRECT:  
**888-960-0364**

OUR TECHNICIANS WILL DIAGNOSE YOUR SITUATION  
OVER THE PHONE TO GET YOU UP AND RUNNING QUICKLY.

Phone: 605-977-3300  
Fax: 605-655-5870  
[www.diamondmowers.com](http://www.diamondmowers.com)

**DEMAND BRILLIANCE.**

© DIAMOND MOWERS, LLC



## Foreword

This manual contains the parts breakdown and identification of the various components and structures that make up your mower implement.

The illustrations, drawings, and diagrams in this manual are based on the latest information available at the time of publication. Your machine may have product improvements and features not yet contained in this parts manual.

Diamond Mowers, LLC reserves the right to make changes at any time without notice or obligation.

Diamond Mowers, LLC™ and Wetblade™ are trademarks of Diamond Mowers, LLC.

This manual should be consulted prior and while assembling the unit, and anytime parts or assembly clarification is needed.

### Copyright© 2016 Diamond Mowers, LLC

All rights reserved. While every precaution has been taken in the preparation of this manual, the publisher assumes no responsibility for errors or omissions. No part of this book covered by the copyrights hereon may be reproduced or copied in any form or by any means - graphic, electronic, or mechanical, including photocopying, taping, or information storage and retrieval systems - without written permission of the publisher.



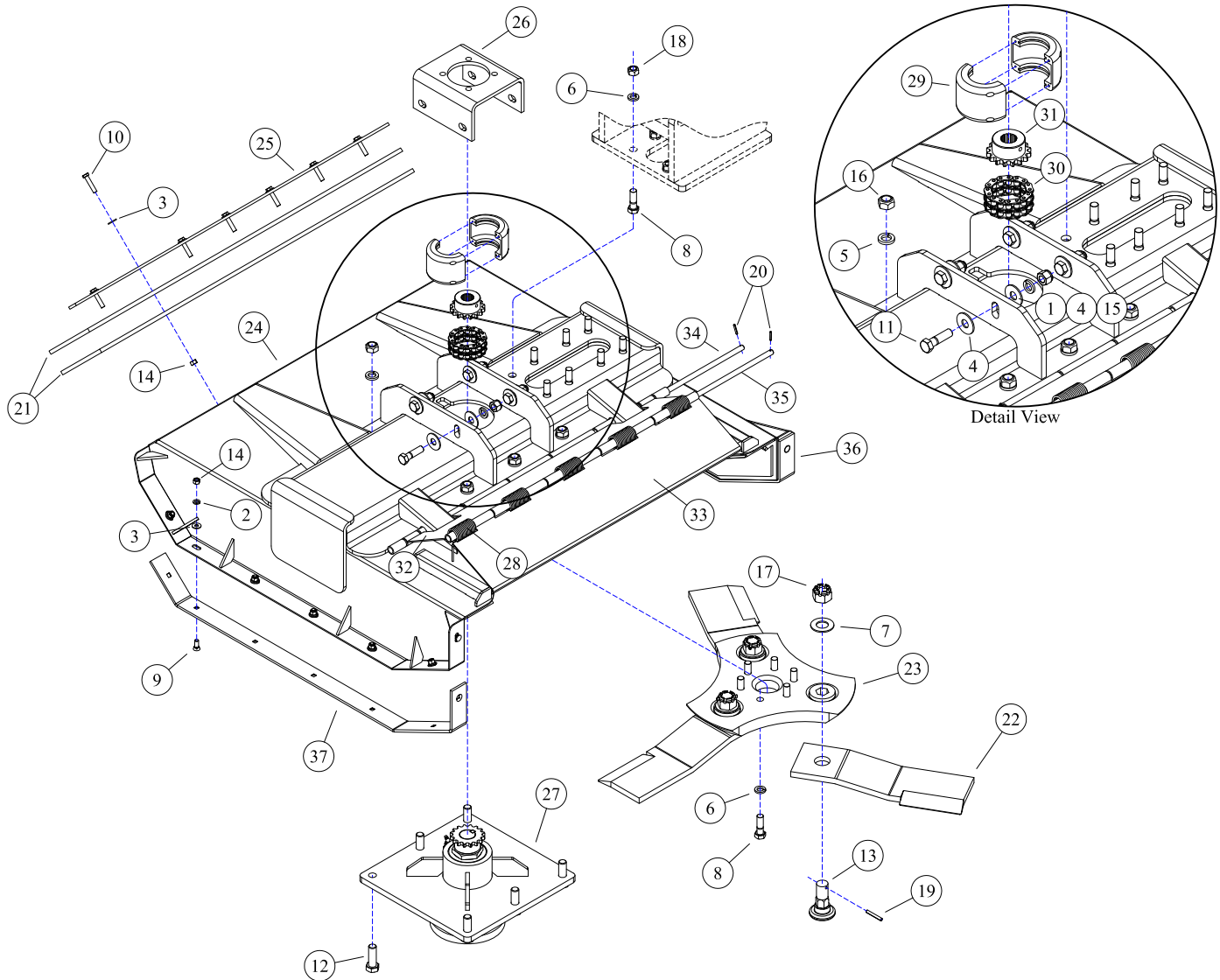
## Table of Contents

<b>ROTARY HEADS</b> .....	4
EXCAVATOR ROTARY HEAD - 40" INDIRECT DRIVE.....	5
<b>DRIVE ASSEMBLIES</b> .....	6
HOW TO DETERMINE YOUR MOTOR PART NUMBER.....	7
DRIVE ASSEMBLY - 40".....	8
<b>DECK ASSEMBLIES</b> .....	9
30-0520 - MOTOR ASSEMBLY.....	10
30-0526 - MOTOR ASSEMBLY.....	11
30-0530 - MOTOR ASSEMBLY.....	12
30-0531 - MOTOR ASSEMBLY.....	13
35-0010 - INDIRECT DRIVE SPINDLE.....	14

# ROTARY HEADS



## EXCAVATOR ROTARY HEAD - 40" INDIRECT DRIVE



REF#	PARTS DESCRIPTION	REQ	PART #
1	5/8 LOCK WASHER GR 5	4	11-0004
2	3/8 LOCK WASHER GR 5	14	11-0005
3	5/16 FLAT WASHER GR 5	21	11-0015
4	5/8 FLAT WASHER GR 5	8	11-0025
5	3/4 LOCK WASHER GR 8	6	11-0040
6	5/8 LOCK WASHER GR 8	14	11-0043
7	1-1/8 SAE FLAT WASHER GR 8	3	11-0057
8	5/8 X 2 H.S. NF HEX CAPSCREW	14	11-0508
9	3/8 X 1 NC PLOW BOLT H.S.	14	11-0511
10	3/8 X 1-3/4 NC HEX CAPSCREW	7	11-0521
11	5/8 X 2-1/4 NC HEX CAPSCREW	4	11-0631
12	3/4 X 2-1/4 NF H.S. HEX CAPSCREW	6	11-0658
13	BLADE BOLT - HEX BASE	3	11-0759
14	3/8 NC HEX NUT	21	11-1001
15	5/8 NC NYLOCK NUT	4	11-1025
16	3/4 NF H.S. STOVER NUT	6	11-1032
17	1-1/8 NF CASTLE NUT	3	11-1050
18	5/8 H.S. NF STOVER NUT	8	11-1143
19	1/4 X 2 ROLL PIN	3	11-2005

REF#	PARTS DESCRIPTION	REQ	PART #
20	5/32 X 1 ROLL PIN	4	11-2054
21	FLAP	2	18-0067
22	5/8" BRUSH KNIFE	3	22-0006
23	40" HEAVY TRI-HEX DISH	1	24-0154
24	40" EXCAVATOR DECK	1	25-0146
25	FLAP RETAINING BAR	1	31-0205
26	MOTOR MOUNT	1	31-0242
27	SPINDLE ASSEMBLY	1	35-0010
28	TORSION SPRING	5	36-0003
29	COVER COUPLING	1	37-0004
30	CHAIN COUPLING	1	37-0006
31	1-1/4 SPROCKET	1	37-0031
32	REAR SHIELD	1	41-0816
33	FRONT SHIELD	1	41-0817
34	TRAP DOOR ROD - REAR	1	41-0818
35	TRAP DOOR ROD - FRONT	1	41-0819
36	LEFT SKID SHOE	1	42-0034
37	RIGHT SKID SHOE	1	42-0035
38	BLADE KIT (Includes 7, 13, 17, 19, & 22)	1	44-0228

# DRIVE ASSEMBLIES

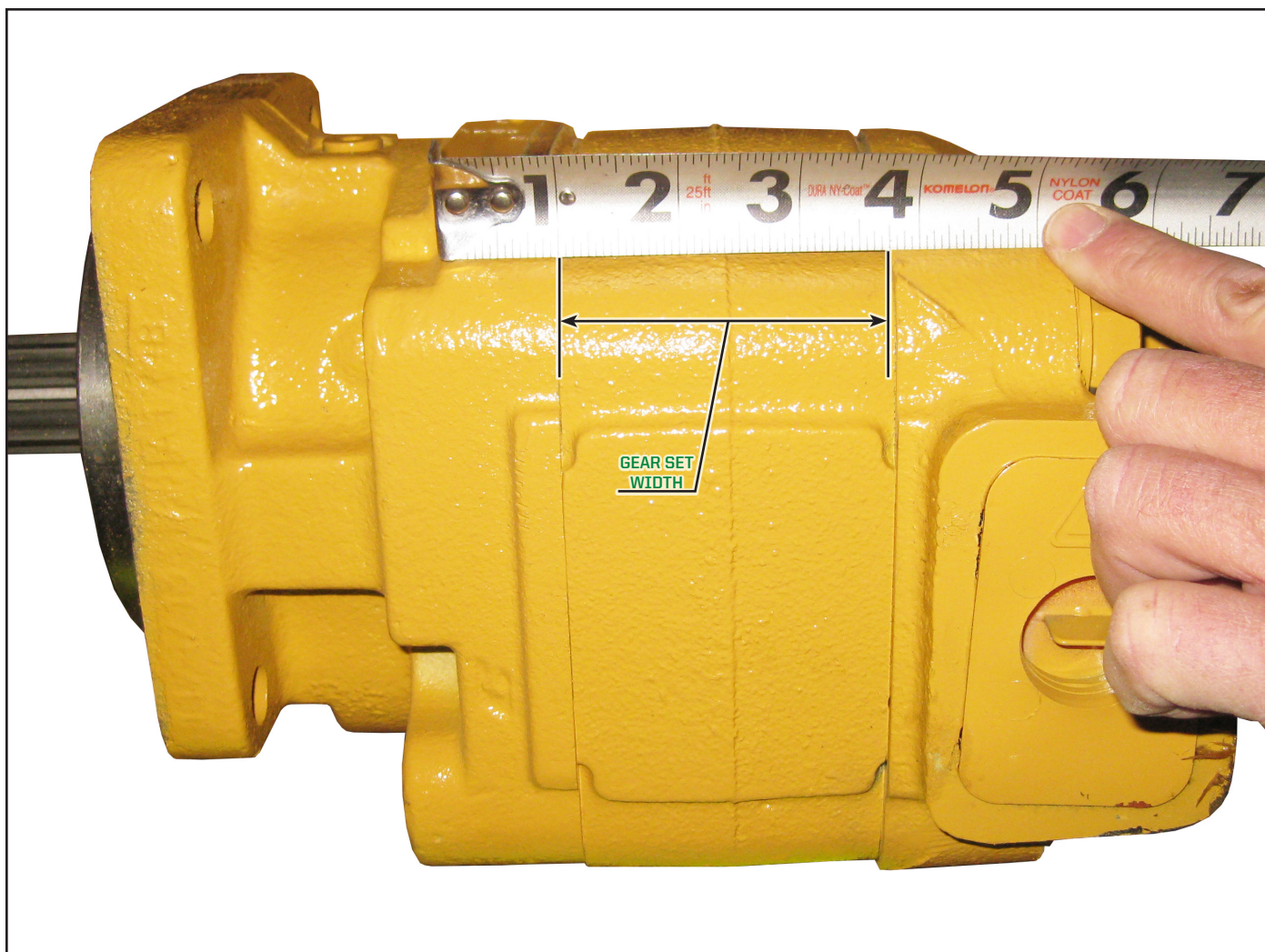




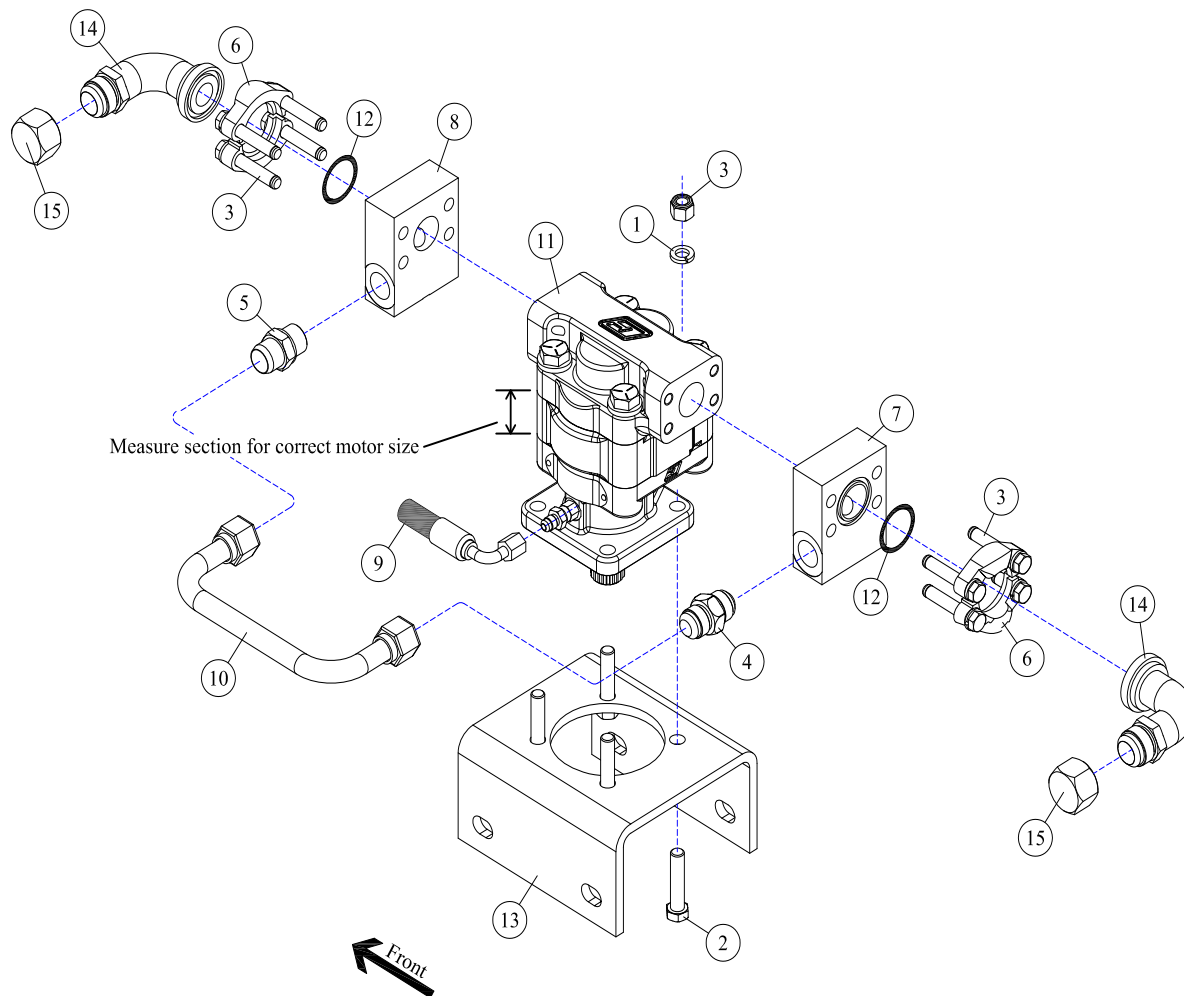
## HOW TO DETERMINE YOUR MOTOR PART NUMBER

**Note:** The following parts pages in the **DRIVE ASSEMBLIES** section have multiple motor options; to identify which motor you have, follow the instructions below: you will have to first determine your vehicles hydraulic oil GPM requirements (i.e. 16-41gpm).

- ▷ Determine what your hydraulic oil flow requirements are for your vehicle in gallons per minute (GPM).
- ▷ Locate the **Drive Assemblies** page in the table of contents in the front of this manual that has a GPM range consistent with your vehicle's GPM requirements, and go to that page. Locate your motor part number.
- ▷ If multiple motor options and part numbers are available on your parts page, measure the width of the gear section of your motor to determine which part number is correct for your motor. Measure the gear section shown in the illustration below *[see Figure 1]*.



*Motor - (Figure 1)*

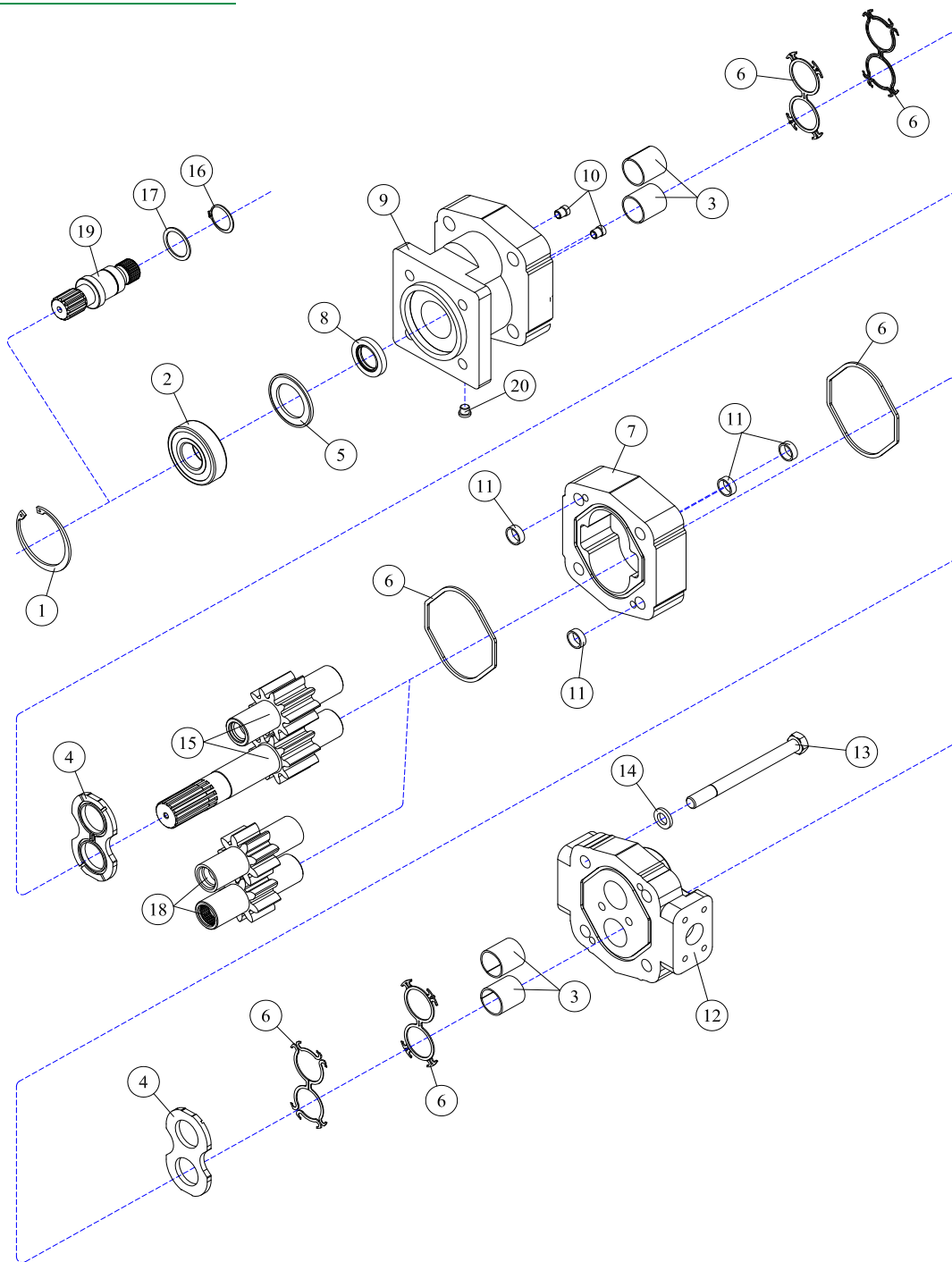
**DRIVE ASSEMBLY - 40"**

REF#	PARTS DESCRIPTION	REQ	PART #
1	1/2 LOCK WASHERS	4	11-0011
2	1/2 X 2-1/4 NC HEX CAPSCREW	4	11-0531
3	7/16 X 3 NC HEX CAPSCREW (included with #7 & 8)	4	11-0587
4	CHECK VALVE	1	21-1474
5	3/4 MORB X 3/4 MJIC ADAPTER	1	21-1475
6	#20 FLANGE KIT (included with #7 & 8)	2	21-2105
7	CROSS OVER MANIFOLD KIT (includes #3,6 & 12)	1	21-2180
8	TEE MANIFOLD KIT (includes #3,6 & 12)	1	21-2181
9	HOSE 3/8 X 24 (3/8FJIC 90DEG X 3/8MJIC)	1	21-4291
10	RUN-AROUND TUBE	1	28-0061
11	<b>MOTOR</b>		
	M330, 1" GEAR SET, 1-1/2" SECT, <b>16-21 GAL/MIN</b>	1	30-0530
	M330, 1-1/4" GEAR SET, 1-3/4" SECT, <b>22-25 GAL/MIN</b>	1	30-0525
	M330, 1-1/2" GEAR SET, 2" SECT, <b>26-29 GAL/MIN</b>	1	30-0526
	M330, 1-3/4" GEAR SET, 2-1/4" SECT, <b>30-34 GAL/MIN</b>	1	30-0531
12	O-RING (included with #6, 7 & 8)	2	33-0013
13	MOTOR MOUNT	1	31-0242
14	ADAPTER, #20FLG X 1MJIC 90DEG	2	21-1267
15	1FJIC CAP NUT	2	21-1454



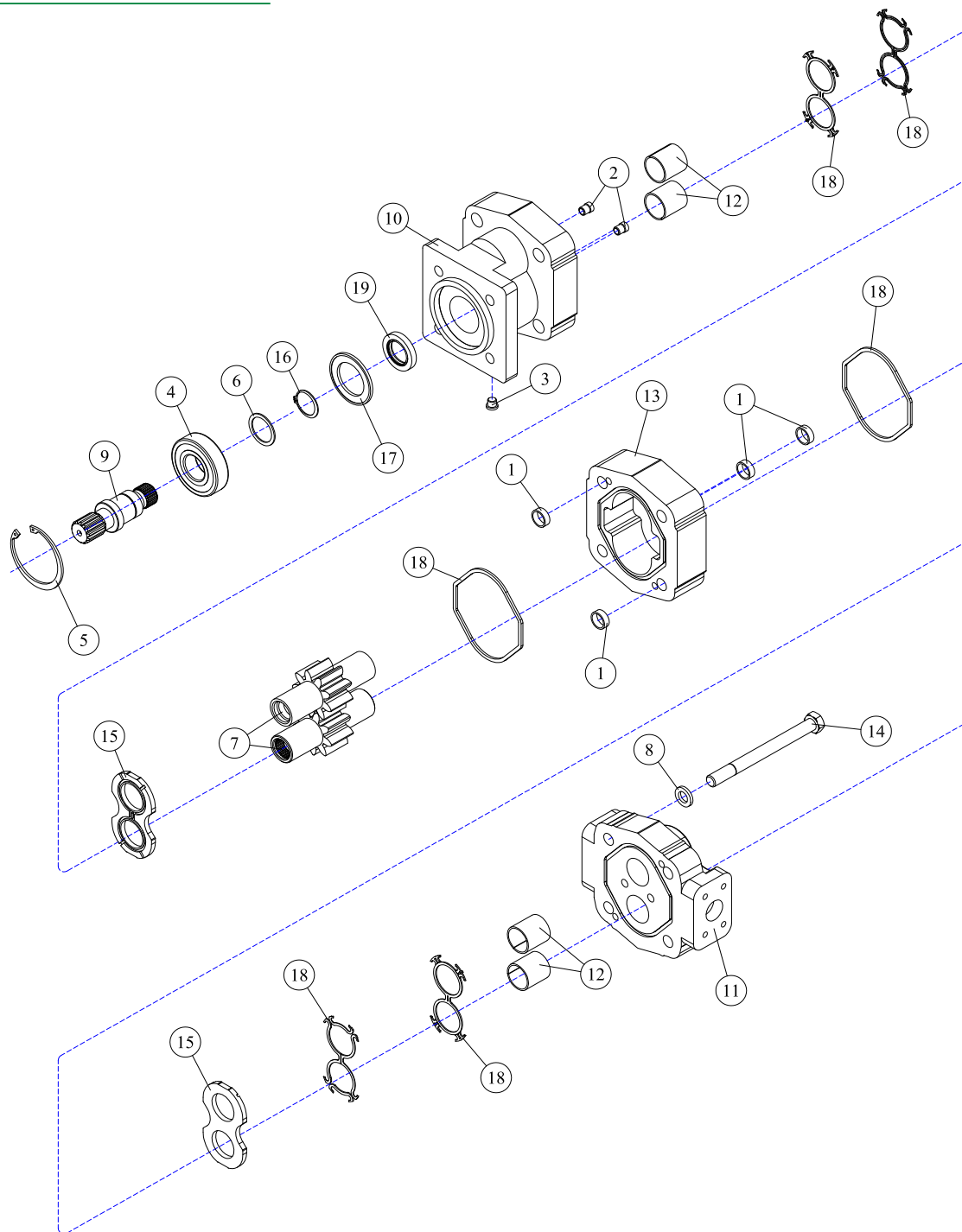
# DECK ASSEMBLIES



**30-0520 - MOTOR ASSEMBLY**

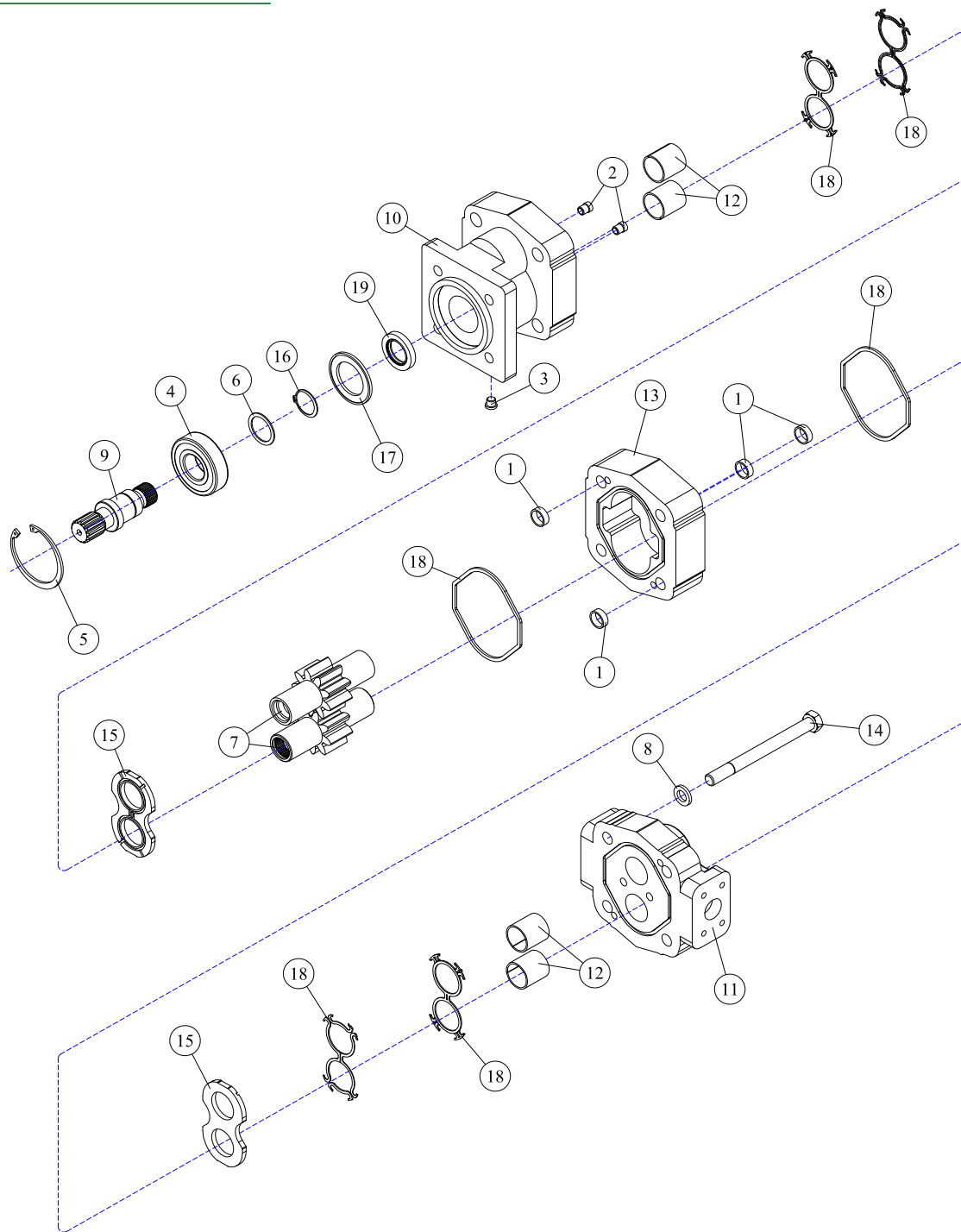
REF#	PARTS DESCRIPTION	REQ	PART #
1	SNAP RING	1	30-1009
2	OUTBOARD BEARING	1	30-1010
3	BUSHING	4	30-1011
4	THRUST PLATE	2	30-1012
5	SEAL RETAINER	1	30-1017
6	M365 SEAL KIT	Avail	30-1021
7	GEAR HOUSING	1	30-1015
8	<b>SHAFT SEAL</b>		
	150 PSI (included in M365 seal kit)	1	30-1210
	500 PSI	1	30-1156
9	SHAFT END COVER	1	30-1086
10	CHECK ASSEMBLY	2	30-1087
11	ALIGNMENT BUSHING	4	30-1090

REF#	PARTS DESCRIPTION	REQ	PART #
12	PORT END COVER	1	30-1091
13	STUD	4	30-1092
14	WASHER	4	30-1093
	<b>GEAR SET OPTION A:</b>		
15	1-3/4" GEAR SET	1	30-1166
	<b>GEAR SET OPTION B:</b>		
16	RETAINING RING	1	30-1019
17	WASHER	1	30-1020
18	1-3/4" GEAR SET	1	30-1013
19	CONTINENTAL SHAFT, SPLINED	1	30-1144
20	PLUG	1	30-1096
*	SEAL APPLICATOR TOOL (not shown)	Avail	30-1048

**30-0526 - MOTOR ASSEMBLY**

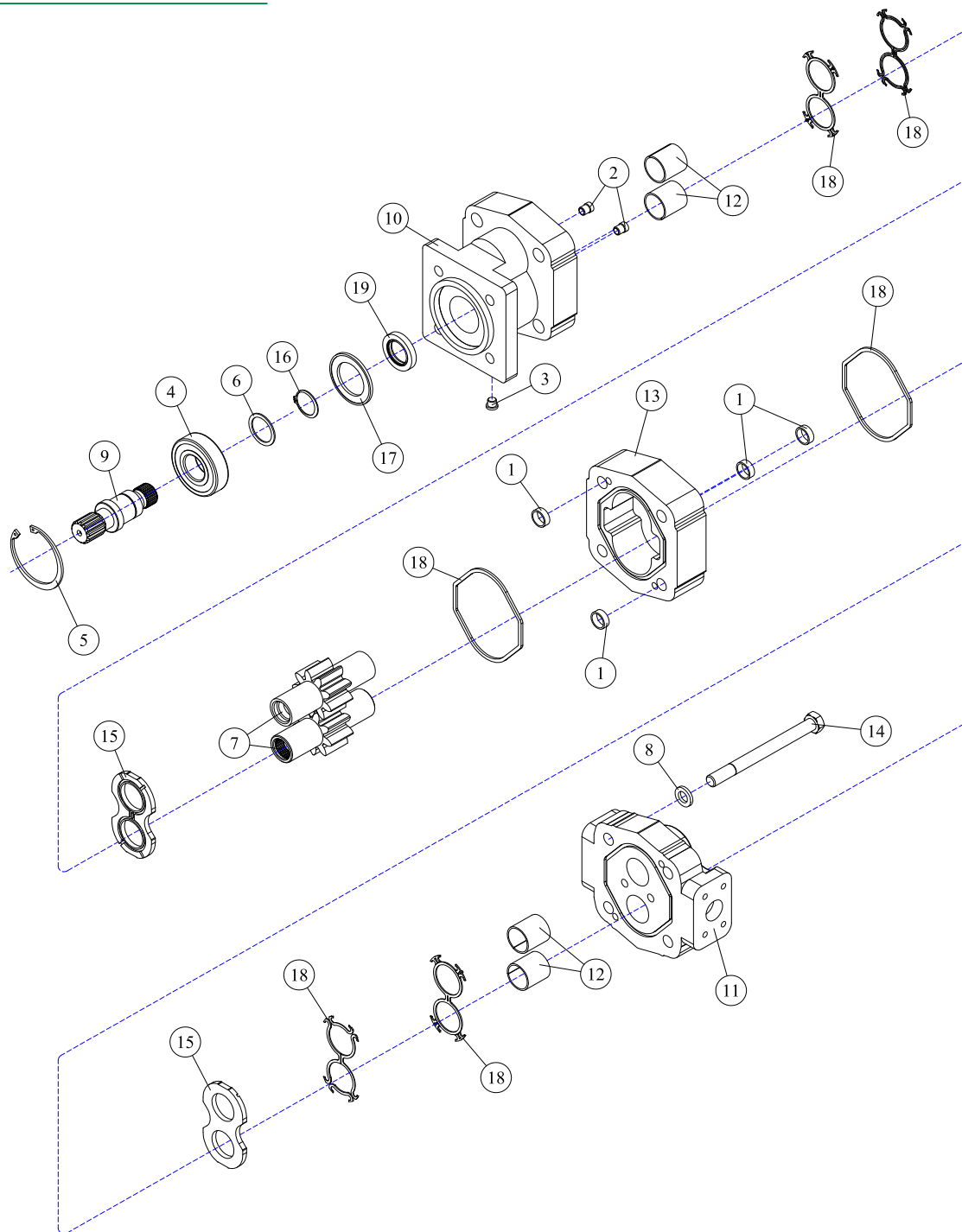
REF#	PARTS DESCRIPTION	REQ	PART #
1	DOWEL PIN	4	30-1086
2	CHECK ASSEMBLY	2	30-1087
3	PLUG	1	30-1096
4	OUTBOARD BEARING	1	30-1109
5	SNAP RING	1	30-1110
6	BEARING SPACER	1	30-1112
7	GEAR SET, M330, 1-1/2"	1	30-1119
8	WASHER	4	30-1127
9	CONTINENTAL SHAFT	1	30-1130
10	SHAFT END COVER	1	30-1182

REF#	PARTS DESCRIPTION	REQ	PART #
11	PORT END COVER	1	30-1183
12	BUSHING (included in shaft & port covers)	4	Call
13	GEAR HOUSING, M330, 1-1/2"	1	30-1184
14	STUD	4	30-1185
15	THRUST PLATE	2	30-1186
16	RETAINING RING	1	30-1187
17	SEAL RETAINER	1	30-1188
18	M330 SEAL KIT	Avail	30-1189
19	SHAFT SEAL 100 PSI (included in M330 seal kit)	1	30-1190
*	SEAL APPLICATOR TOOL (not shown)	Avail	30-1048

**30-0530 - MOTOR ASSEMBLY**

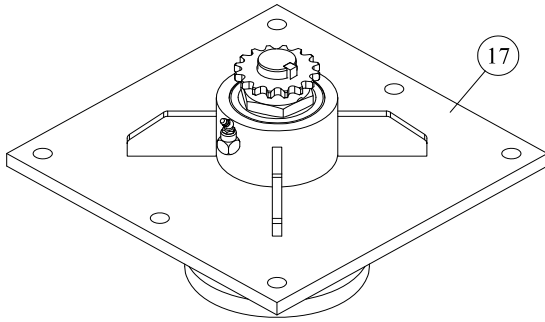
REF#	PARTS DESCRIPTION	REQ	PART #
1	DOWEL PIN	4	30-1086
2	CHECK ASSEMBLY	2	30-1087
3	PLUG	1	30-1096
4	OUTBOARD BEARING	1	30-1109
5	SNAP RING	1	30-1110
6	BEARING SPACER	1	30-1112
7	GEAR SET, M330, 1"	1	30-1196
8	WASHER	4	30-1127
9	CONTINENTAL SHAFT	1	30-1130
10	SHAFT END COVER	1	30-1182

REF#	PARTS DESCRIPTION	REQ	PART #
11	PORT END COVER	1	30-1183
12	BUSHING (included in shaft & port covers)	4	Call
13	GEAR HOUSING, M330, 1"	1	30-1197
14	STUD	4	30-1198
15	THRUST PLATE	2	30-1186
16	RETAINING RING	1	30-1187
17	SEAL RETAINER	1	30-1188
18	M330 SEAL KIT	Avail	30-1189
19	SHAFT SEAL 150 PSI (included in M330 seal kit)	1	30-1190
*	SEAL APPLICATOR TOOL (not shown)	Avail	30-1048

**30-0531 - MOTOR ASSEMBLY**

REF#	PARTS DESCRIPTION	REQ	PART #
1	DOWEL PIN	4	30-1086
2	CHECK ASSEMBLY	2	30-1087
3	PLUG	1	30-1096
4	OUTBOARD BEARING	1	30-1109
5	SNAP RING	1	30-1110
6	BEARING SPACER	1	30-1112
7	GEAR SET, M330, 1-3/4"	1	30-1202
8	WASHER	4	30-1127
9	CONTINENTAL SHAFT	1	30-1130
10	SHAFT END COVER	1	30-1182

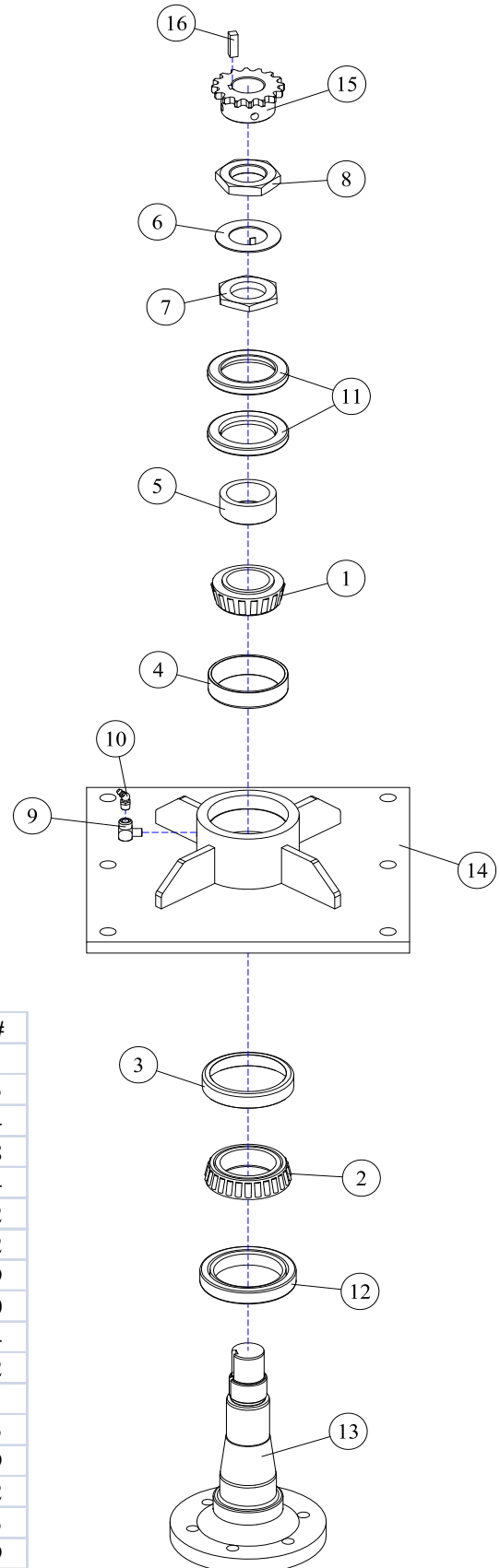
REF#	PARTS DESCRIPTION	REQ	PART #
11	PORT END COVER	1	30-1183
12	BUSHING (included in shaft & port covers)	4	Call
13	GEAR HOUSING, M330, 1-3/4"	1	30-1203
14	STUD	4	30-1204
15	THRUST PLATE	2	30-1186
16	RETAINING RING	1	30-1187
17	SEAL RETAINER	1	30-1188
18	M330 SEAL KIT	Avail	30-1189
19	SHAFT SEAL 100 PSI (included in M330 seal kit)	1	30-1190
*	SEAL APPLICATOR TOOL (not shown)	Avail	30-1048

**35-0010 - INDIRECT DRIVE SPINDLE**

\* Complete spindle assemblies also available.  
Diamond Part #35-0010

\*\*Do not use #2 heavy-duty grease on spindle assembly. Use Diamond spindle grease parts #23-0001

\*\*\*Complete spindle repair kits available.  
These kits include 10-0003, 10-0004, 10-0008, 10-0014, 10-1002, 11-0002, 11-1009, 11-1010, 33-0001, 33-0003 & 37-0009. These can be purchased using part #44-0001



REF#	PARTS DESCRIPTION	REQ	PART #
1	BEARING CONE	1	10-0003
2	BEARING CONE	1	10-0004
3	BEARING CUP	1	10-0008
4	BEARING CUP	1	10-0014
5	BEARING ADJUSTMENT SLEEVE	1	10-1002
6	JAM WASHER	1	11-0002
7	ADJUSTMENT BEARING NUT	1	11-1009
8	ADJUSTMENT BEARING NUT	1	11-1010
9	1/8 X 90DEG ELBOW	1	21-1104
10	1/8" X 45 GREASE ZERK	1	23-0002
11	UPPER SEAL SET	1	33-0001
12	LOWER SEAL	1	33-0003
13	SPINDLE	1	35-0009
14	SPINDLE HOUSING	1	35-0012
15	SPROCKET	1	37-0003
16	SPINDLE KEY	1	37-0009
17*	SPINDLE ASSY COMPLETE	Avail	35-0010
18**	DIAMOND SPINDLE GREASE	Avail	23-0001
19***	SPINDLE REPAIR KIT	Avail	44-0001



**(PAGE INTENTIONALLY BLANK)**



**100% SATISFACTION  
GUARANTEE**  
★ GET IT, LOVE IT, *or* LEAVE IT! ★

**72-HOUR PARTS  
SHIPPING GUARANTEE**