



SKID-STEER ROTARY MOWER

OPERATOR'S MANUAL



350 EAST 60TH ST. N. • SIOUX FALLS, SD 57104

800.658.5561 • 605.977.3300

WWW.DIAMONDMOWERS.COM

PARTS 888.960.0361

WARRANTY + SERVICE 888.960.0364



PRODUCT INFORMATION

Record the model and serial number of your unit here. When calling for warranty, service or parts, you may be asked to provide this information, in order to ensure fast, accurate service.

MODEL: Skid-Steer Rotary Mower **SIZE:** 60"(153cm) 72"(183cm) 84"(214cm)
(circle one)

SERIAL NUMBER: _____

Any failure to read, understand and follow the instructions found in this operator's manual could lead to serious injury. Operators who choose to operate this equipment without following instructions, or who choose to operate this equipment in a manner inconsistent with the recommendations set forth in this manual, do so at their own risk and assume the risk of injury. Diamond Mowers will not be liable for an owner or operator's loss, damage, or injury due to the misuse of the equipment, failure to understand the inherent risks, or inability to properly operate the equipment.

© Diamond Mowers.
All rights reserved.

WELCOME!

Thank you for choosing Diamond Mowers, and welcome to your skid-steer rotary mower. Before you begin operating, we encourage you to look through this manual to review the proper maintenance and operating techniques that will keep you, and your equipment, safe – while ensuring you the most productive skid-steer rotary mower in the market.

We have nothing but respect and admiration for you. Our job at Diamond is to provide you with the toughest, most reliable and safest equipment that will allow you to do your job better. That also means being there when you need us.

CONTACT US:

Parts: 888.960.0361 | parts@diamondmowers.com

Warranty / Service: 888.960.0364 | warranty@diamondmowers.com

Main Office: 800.658.5561 | 605.977.3300

Website: www.diamondmowers.com | **Email:** info@diamondmowers.com

Your time is important to us.

We guarantee that Genuine Diamond Parts will ship within 72-hours of the order being placed or the parts and shipping are free.

Your satisfaction is guaranteed.

If you are not completely satisfied with your new Diamond in the first 30-days, we will buy it back. No questions asked.

Thanks again for choosing Diamond.

If at any time your needs are not being met by our team, please feel free to call me direct.



Tim Kubista
VP Sales & Marketing
651.955.6665

In your welcome packet you should have received a warranty registration form. Complete and return this form to our main office. It's a self-mailer, so no postage is required.

If you'd rather complete this info online, you can go to:
<http://info.diamondmowers.com/register-my-product>

Returning your registration information to Diamond will help us process any warranty claims quickly and efficiently – so you can get back to work, fast.

TRANSFERRED OWNERSHIP

If you have acquired this unit from a previous owner, we encourage you to register your equipment online. By registering your Diamond Mowers unit, you'll stay informed on product advancements, offers and service alerts.

Register by going to: <http://info.diamondmowers.com/register-my-product>

We honor our equipment's warranty from the date it was put into service, no matter who's in charge of running it.

For any questions, contact our Warranty / Service team at:
888.960.0364 or 605.977.3300
warranty@diamondmowers.com



TABLE OF CONTENTS

| | |
|---|----|
| INTENDED USE | 6 |
| TAKE A LOOK AROUND | 7 |
| GETTING STARTED | 8 |
| OPERATING YOUR SKID-STEER ROTARY MOWER..... | 10 |
| MAINTENANCE INTERVALS | 15 |
| TROUBLESHOOTING | 21 |
| PARTS BOOKS | 24 |
| INDEX | 42 |

INTENDED USE

This attachment is designed to be used for mowing and brush management applications.

This includes:

- Cutting grass
- Mulching brush
- Cutting 4" (10.2cm) material continuously and 10" (25.4cm) material intermittently

This attachment should only be used in an area free of obstructions and bystanders. Any use on non-vegetative material, or in an area that is not clear of persons and property, is strictly prohibited. Any use outside of the aforementioned application is considered contrary to its intended use. Any damage that may occur as a result of misuse will void warranty as stated in Diamond Mowers' warranty policy.

WARNING

Do not operate this unit without first reading the safety precautions and operating instructions in this manual.

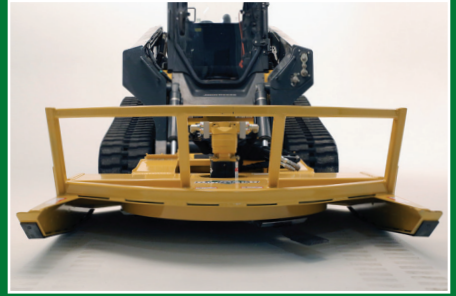
TAKE A LOOK AROUND

Let's get started by doing a quick walk around of the skid-steer rotary mower.



BLADES

Three, hardened steel knives $\frac{5}{8}$ " (16mm) thick, the blades are built to swing allowing it to break away when in contact with rocks.



PUSH BAR

Guides material away from the loader.



DISC

It is important to build momentum in the cutting disc and allow for recovery time. This disc acts like a flywheel and stores energy. It will take some time for the disc to come up to full speed. If the disc begins to slow down in heavy brush or while cutting large trees, slow your movements to allow the disc to return to full speed.



HOSES

Shipped with $\frac{1}{2}$ " (13mm) quick couplers and a case drain line with both male and female ends. High flow motors are equipped with a case drain line while standard flow motors are not. If your mower is equipped with a case drain line, ensure that it is properly connected and unrestricted to tank.

GETTING STARTED



MACHINE FLOW

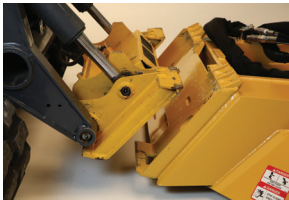
Diamond's skid-steer rotary mowers can be used on either a low flow or high flow machine capable of 16-46 GPM (61-175 LPM). Make certain the skid-steer rotary mower you purchased is sized right for your machine.

| DECK SIZE | GPM | LPM | CASE DRAIN |
|-----------------|-------|---------|------------|
| 60"(153cm) Deck | 16-28 | 61-106 | No |
| | 20-46 | 76-174 | Yes |
| 72"(183cm) Deck | 17-41 | 65-155 | Yes |
| | 17-28 | 65-106 | No |
| | 26-32 | 99-121 | No |
| 84"(214cm) Deck | 32-40 | 122-152 | Yes |



INSTALL SHATTER RESISTANT ENCLOSURE

This product must not be used without a shatter resistant cab enclosure. Debris can fly back at the cab and cause damage.



HOOK UP

The skid-steer rotary mower will mount onto the front of the skid loader's quick detach arms in place of a bucket or other implements.



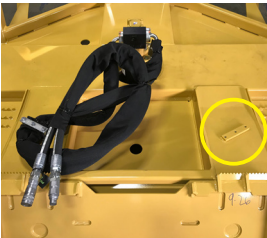
CONNECT QUICK COUPLERS

- Install the coupler that matches skid loader.
- To prevent contamination, clean connections before attaching.
- If your deck includes a case drain line, ensure it is connected prior to operation. The case drain line must be properly connected or you will damage your hydraulic motor. The case drain line will come with both male and female quick coupler connects. Install the one that matches your machine.

ATTACH HOSES

Make sure the hose length outside of the bracket is long enough for the head to make a full range of motion, but not so long that they pinch.

- If the pressure and return hoses are reversed, the disc will spin backwards resulting in damage. If this reversal occurs, either inverse the flow from your loader or switch the couplers on the pressure and return hose.
- An additional hose bracket location is provided on the rotary mower. If you need to move your hoses, unbolt the hoses and hose bracket from the current position and secure them to the alternate position.




OPERATING YOUR SKID-STEER ROTARY MOWER


Before you operate, note that the primary responsibility for safety on this equipment falls to the operator. Only trained individuals who have read and understood this manual should operate this unit.


If any portion of this manual is not understood, contact Diamond Mowers Service/Warranty at 800.658.5561 or 605.977.3300.

SAFETY TIPS:

Be sure to read all warnings carefully. They are included for your safety, and for the safety of others working with you.

 This signal is used where **serious** injury or death will result if instructions are not followed properly.

 This signal is used where **serious** injury or death could result if instructions are not followed properly.

 This signal is used where **minor** injury could result if instructions are not followed properly.

- Always wear proper safety glasses, goggles, or a face shield when operating.
- This unit will cause dust, flying debris or other hazardous material.
- Block off work area from bystanders, livestock, etc.
- Bystanders must keep a distance of 300'/91.5m from the unit when it's operating.
- Do not use extremities to dislodge debris from blades or disc.
- Route hoses correctly to ensure a full range in motion.
- Make certain hoses are out of the way of tires, tracks or the ground.
- Operate only from the operator's station.

- Hydraulic fluid is hot and will heat any exposed steel, hoses, motor, or spindle in its proximity.
- Make sure the cutting disc has come to a complete stop before exiting the skid loader and place the loader into park.

⚠ WARNING

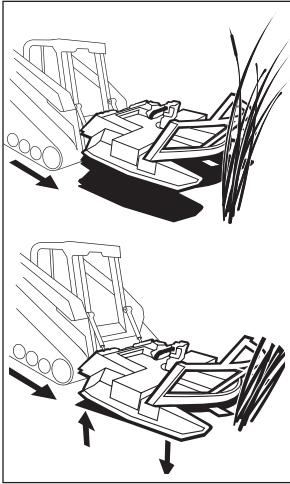
Contact with the disc or blades while the disc is in motion can cause serious injury or death. The disc spins at a very high speed and can take several minutes to stop. Be sure all personnel are clear of the machine before engaging the mower. Be certain the disc has come to a complete stop before exiting the cab.



STOWED POSITION

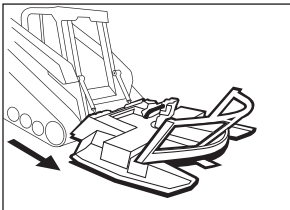
When transporting Diamond's rotary mower between operations, make sure to protect it from collisions and accidental damages by placing it in the stowed position. Failure to place the head in its stowed position could result in structural damage.

OPERATING TECHNIQUES



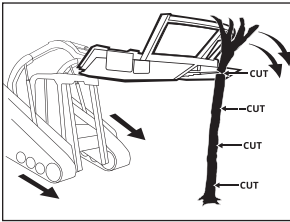
GRASS & BRUSH CUT

- This technique is most common and uses the center of deck to cut grass or brush.
- Lower the front of the deck slightly to ensure that material is being cut and that there is ample room for exhausted material to be dispersed.
- If you hear the blades slow, or the engine bog down, lift up the head and/or slow your ground speed.
- A second pass may need to be made for heavy brush or grass.
- Complete the initial pass at 12" (30.5cm) into the material.
- Complete a second pass at ground level to thoroughly mulch the remaining material.



FINISHED MOW

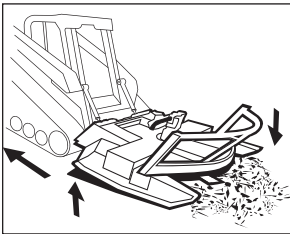
- This technique is used to create a clean and finished look.
- Drive straight into the material keeping the deck low and level, or slightly pitched forward.
- Maintain speed of the disc and ground speed.



TREE CUT

- This technique uses the center of deck to eliminate trees.

- On large trees, start working at the top and cut the tree in 12" (30.5cm) increments.
- With the rotary mower lifted slightly, drive straight into the material.
- Use push bar to push tree over while cutting.
- Use a smooth, quick action to cut the material completely.

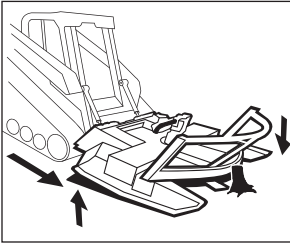


CLEANING AND RE-PROCESSING

- After cutting a tree for the first time, there will likely be branches and large debris around the work site. Re-processing the debris will provide a more groomed look.

- Raise lift arms about 6" (15.2mm) and drop front of head toward the ground for the leading edge to skim the ground.
- Back over the remaining debris for a more finished look.

CONTINUED ON NEXT PAGE



STUMP CUT

- Many users will want to cut stumps at or below ground level.
 - Keeping the deck level, cut the stump low to the ground.
 - Wait to rebuild speed before proceeding with a stump cut.
 - Lift up the deck and point the nose down to the ground to allow the blades to be closer to the ground.
 - Drive over the stump again, cutting at or below ground level



No Pancaking

This machine is not built to drop on top of material for cutting or mulching. Damage will incur to the blades and spindle as a result of pancaking material.

For more tips, visit us online at www.diamondmowers.com

MAINTENANCE INTERVALS

Regular maintenance will make certain your unit stays productive and retains a long operating life.

The following chart represents the minimum intervals recommended for inspection and maintenance.

| PROCEDURE | 10 HOURS | 50 HOURS | AS NECESSARY |
|------------------------------|----------|----------|-----------------------|
| Blades | X | | |
| Castle Nuts and Roll Pin | X | | |
| Disc | X | | |
| Hydraulic Hoses and Fittings | X | | |
| Motor Bolts | X | | |
| Push Bar | | | X |
| Shatter Resistant Enclosure | | | X |
| Skid Shoes | | X | |
| Spindle Insert | | | Annually or 500 hours |
| Spindle Bolt | X | | |
| Spindle | | | Annually |

When replacing parts, use Genuine Diamond Parts. Guaranteed to ship within 72-hours of your order being placed, or the parts and shipping are free.

Call: 888-960-0361 or 605.977.3300 | **Email:** parts@diamondmowers.com

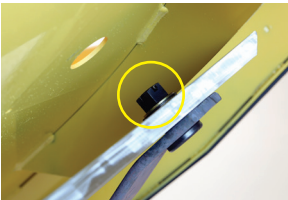
Order online: www.diamondmowers.com

CONTINUED ON NEXT PAGE



BLADES

- Blades should be inspected every 10 hours, depending on usage.
- Inspect the blades for any cracks or damage.
- Blades that show 50% wear from original width should be replaced.
 - Blades should be replaced as a set of three to maintain balance.
 - To replace a blade:
 - Remove the blade bolt.
 - Replace the blade.
 - Using new hardware, torque castle nuts to 400ft-lbs (543Nm).
 - **DO NOT** use Loctite
 - Refer to Castle Nuts & Roll Pin for installation specifications.



CASTLE NUTS AND ROLL PIN

- Castle nuts and roll pin should be inspected every 10 hours, or daily.
- Access to castle nuts can be reached through the deck's access hole.
 - If a roll pin is missing:
 - Torque castle nut to 400ft-lbs (543Nm).
 - Replace the roll pin.
 - If the roll pin cannot be inserted after the castle nut has been torqued, continue to torque the castle nut until the roll pin will fit.



DISC

- Disc should be inspected every 10 hours, or daily.
- Raise and secure the deck to inspect the disc for any cracks or other damage.
 - If damage is found, disc should be replaced.
 - If disc bolts are loose:
 - Remove the bolts.
 - Apply Loctite 262 (red) to the threads.
 - Replace the bolts and torque to 240ft-lbs (325Nm).



HYDRAULIC HOSES & FITTINGS

- Hydraulic hoses and fittings should be inspected every 10 hours, or daily.
- **What to look for:**
 - Hydraulic fitting clamps and threaded connections for any hydraulic fluid.
 - If any leaks are observed, stop immediately to prevent damage to your loader.
 - Hoses for any abrasions or cuts.
- Replace damaged or worn hoses.
 - Attach wear pads around critical points where hoses are likely pinched or rubbed.

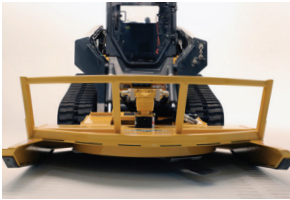
⚠ CAUTION

DO NOT check for hydraulic leaks with your hands or any part of your body. Use a heavy piece of paper or cardboard to check areas that are not readily visible. Pressurized hydraulic fluid can penetrate the skin and lead to serious health risks or death.



MOTOR BOLTS

- Motor bolts should be inspected every 10 hours, or daily.
- If motor bolts are loose or locking tabs are missing, torque bolts to 120ft-lbs (163Nm)
- Verify that locking tabs are in place.
 - Assemble locking tabs to the u-shaped tab over the motor bolts with their hardware.
 - Torque hardware to 75in-lbs (8.5Nm).



PUSH BAR

- Check for cracks.
- Repair as necessary.



SHATTER RESISTANT ENCLOSURE

- **REQUIRED!** Debris can be thrown unexpectedly in any direction. Do not attempt to use this unit without proper protection.
- Clean only with mild soap and water using a sponge or soft cloth.
- Replace as necessary.



SKID SHOES

- Skid shoes should be inspected every 50 hours, or weekly.
- Replace as necessary.



SPINDLE

- Spindle should be greased every 500 hours.
 - DO NOT grease spindle prior to the first 500 hours of use. If greased too soon the spindle could prematurely fail.
 - DO NOT grease spindle more frequently than recommended.

- Greasing spindle
 - Inject 10 pumps per grease fitting with a lithium-based #2 grease.
 - Grease only at the recommended 500-hour interval.
 - Do NOT over grease.
 - Inspect topside of cutting disc for grease.
 - If grease is present, the spindle's lower bearing seal may be damaged and will require replacement.
 - The disc should rotate smoothly.
 - If excessive axial or radial play is found, the spindle bearings are likely worn and will require replacement.

CONTINUED ON NEXT PAGE



SPINDLE INSERT

- Spindle insert should be greased every 500 hours.
- If wear is noted between the spindle and insert or between insert and motor, replace the spindle insert.
- To grease the spindle insert:
 - Unbolt the motor from the spindle.
 - Inject 12 pumps of Chevron Delo HD EP2 or equivalent high temp #2 lithium grease into the spindle splined insert.
- To remove the replaceable insert:
 - Remove snap ring.
 - Thread a $\frac{3}{4}$ -16 SAE 5" long bolt into the base and pull the insert out of the spindle.
 - Replace the insert and the snap ring.
 - Reassemble the motor and spindle with motor bolts and U-shaped tabs.
 - Torque motor hardware to 120ft-lbs (163Nm).
 - Assemble lock tabs to the U-Shaped tab over the motor bolts with their hardware.
 - Tighten cap bolts slightly as needed to allow the U-tab and lock tabs to be fastened together.
 - Torque hardware to 75in-lbs (8.5Nm).



SPINDLE BOLTS

- Spindle bolts and nuts should be inspected every 10 hours, or daily.
- If bolts come loose, remove, apply Loctite 262 (red) to threads and reinstall.
- Torque hardware to 240ft-lbs (325Nm).

WARNING

Failure to inspect and replace hardware at recommended intervals may cause damage to the unit and skid loader.

TROUBLESHOOTING

| Problem | Potential Cause | Solutions |
|--------------------|------------------------------------|---|
| Disc Will Not Spin | No hydraulic flow from skid loader | Verify hydraulic flow from power unit. |
| | Failed splined insert | <p>Replace splined insert.</p> <ul style="list-style-type: none"> • Remove motor and snap ring from spindle • Thread a 3/4-16 by 5" bolt into the insert base, forcing it out of the shaft. • Replace spindle insert. • Replace snap ring, motor and hardware. • Torque hardware to 120ft-lbs (163Nm). |
| | Reversed flow from skid loader | After connecting the hoses to the machine, start machine at low idle and verify that the blades are spinning clockwise. As you sit in the cab it should spin left to right. |
| | Hydraulic motor shaft failure | <p>Will require replacement.</p> <p>Contact Diamond Parts at 888.960.0361 or 605.977.3300.</p> |
| | Material jammed | <p>Dislodge material from disc by first disengaging the implement and backing up. This will typically clear the cutting head.</p> <p>If the cutting head does not clear, shut down the implement and rest the head on the ground. After the disc has come to a complete stop, clear the head manually.</p> <p>DO NOT use extremities to dislodge debris from blades or disc.</p> |

CONTINUED ON NEXT PAGE

| Problem | Potential Cause | Solutions |
|---------------------|---|---|
| Excessive Vibration | Disc to spindle hardware is loose | Tighten hardware. <ul style="list-style-type: none"> • Apply Loctite 262 (red) to threads. • Torque hardware to 240ft-lbs (325Nm). |
| | Vegetation build up on disc | Clean disc to remove debris by first disengaging the implement and backing up. This will typically clear the cutting head. If the cutting head does not clear, shut down the implement and rest the head on the ground. After the disc has come to a complete stop, clear the head manually. DO NOT use extremities to dislodge debris from blades or disc. |
| | Missing or broken blade | Replace blade. <ul style="list-style-type: none"> • Remove the blade bolt. • DO NOT use Loctite. • Use a torque wrench set to torque to 400ft-lbs (543Nm). <ul style="list-style-type: none"> - If the roll pin cannot be inserted after the castle nut has been torqued, continue to torque the castle nut until the roll pin will fit. |
| | Excessive play in spindle | The disc should rotate smoothly. <ul style="list-style-type: none"> • If excessive play is found, the spindle bearings are likely worn and will require replacement. Contact Diamond Parts at 888.960.0361 or 605.977.3300. |
| Problem | Potential Cause | Solutions |
| Disc Slows Quickly | Skid loader is operating on standard flow vs. high flow | Ensure skid loader on high flow. |
| | Need to replace blades | Replace blade. <ul style="list-style-type: none"> • Remove the blade bolt. • DO NOT use Loctite. • Use a torque wrench set to torque to 400ft-lbs (543Nm). <ul style="list-style-type: none"> - If the roll pin cannot be inserted after the castle nut has been torqued, continue to torque the castle nut until the roll pin will fit. |

**For any questions, contact our Warranty / Service team at
 888.960.0364 or 605.977.3300**

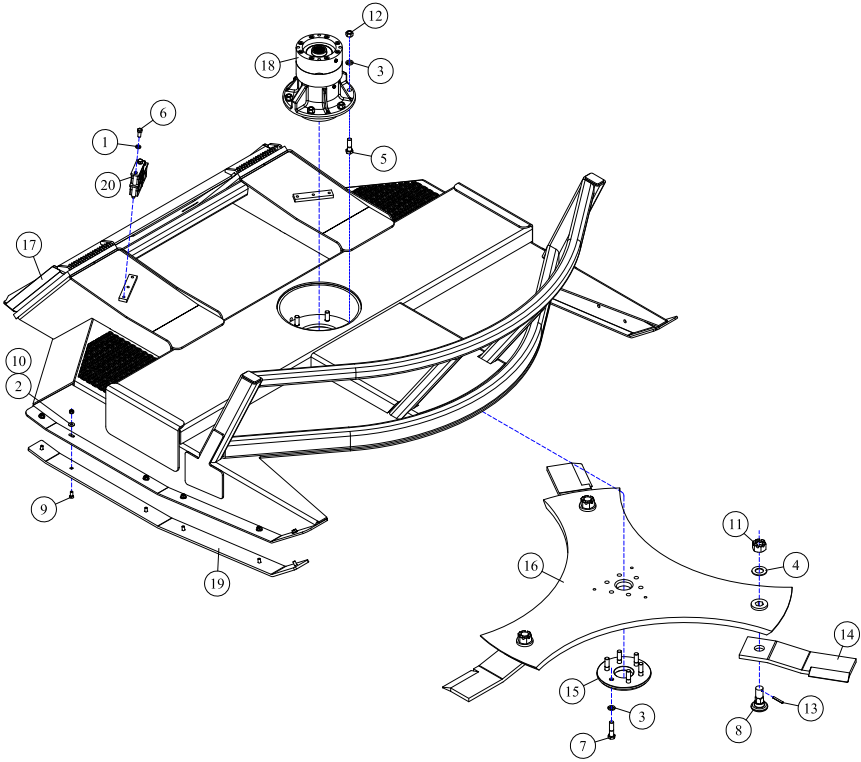
THIS PAGE INTENTIONALLY LEFT BLANK



SKID STEER ROTARY MOWER
PARTS BOOKS

60"(153cm) DECK

25-1327

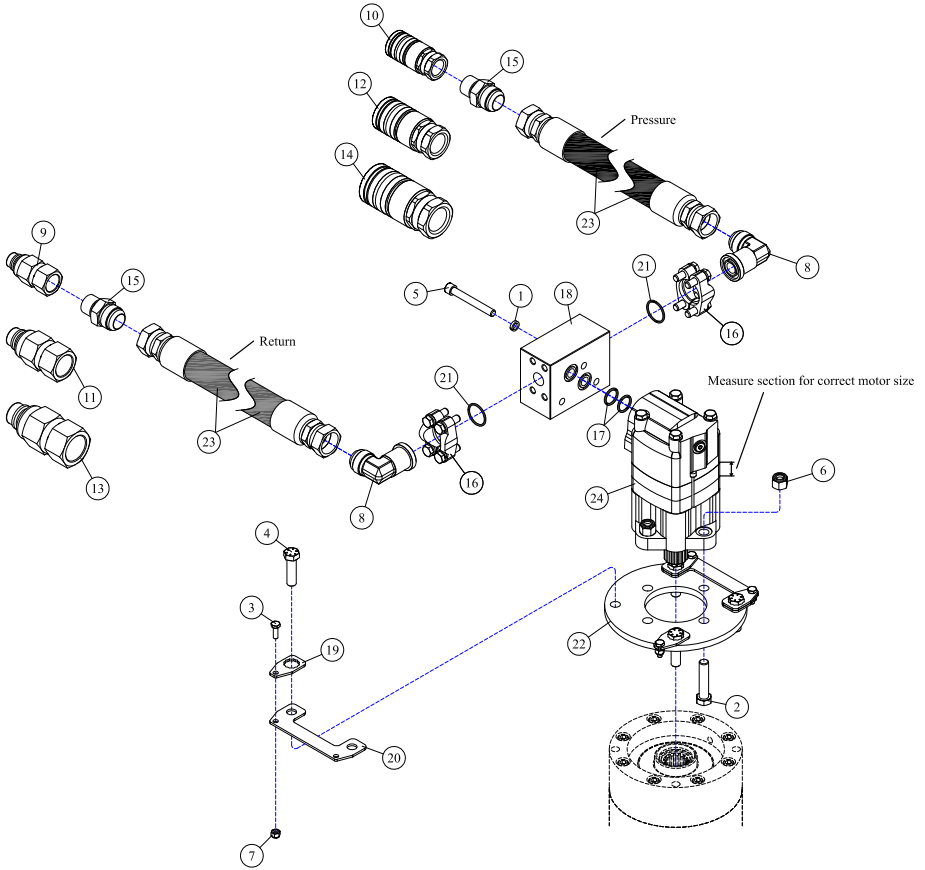


| REF# | PARTS DESCRIPTION | REQ | PART # |
|------|----------------------------------|-----|---------|
| 1 | 7/16 LOCK WASHER GR 5 | 3 | 11-0003 |
| 2 | 5/16 FLAT WASHER | 12 | 11-0015 |
| 3 | 5/8 H.S. LOCK WASHER | 12 | 11-0043 |
| 4 | 1-1/8 H.S. SAE FLAT WASHER | 3 | 11-0057 |
| 5 | 5/8 X 2 H.S. NF HEX CAPSCREW | 6 | 11-0508 |
| 6 | 7/16 X 1 NC HEX CAP | 3 | 11-0584 |
| 7 | 5/8 X 2-1/4 H.S. NF HEX CAPSCREW | 6 | 11-0691 |
| 8 | BLADE BOLT - HEX BASE | 3 | 11-0759 |
| 9 | 3/8 X 1-1/4 PLOW BOLT | 12 | 11-0804 |
| 10 | 3/8 NC NYLOCK NUT | 12 | 11-1024 |

| REF# | PARTS DESCRIPTION | REQ | PART # |
|------|-------------------------------|-----|---------|
| 11 | 1-1/8 H.S. NF SLOTTED HEX NUT | 3 | 11-1050 |
| 12 | 5/8 H.S. NF STOVER NUT | 6 | 11-1143 |
| 13 | ROLL PIN, 1/4 X 2 | 3 | 11-2005 |
| 14 | 5/8" BRUSH BLADE | 3 | 22-0006 |
| 15 | BOLT PROTECTOR | 1 | 24-0004 |
| 16 | DISH | 1 | 24-0145 |
| 17 | 60" DECK SHELL | 1 | 25-0116 |
| 18 | SPINDLE ASSEMBLY | 1 | 35-0088 |
| 19 | SKID SHOE | 2 | 42-0033 |
| 20 | HOSE CLAMP | 1 | 44-0351 |

60"(153cm) DECK

Drive Assembly: 16-28 GPM (61-106 LPM)

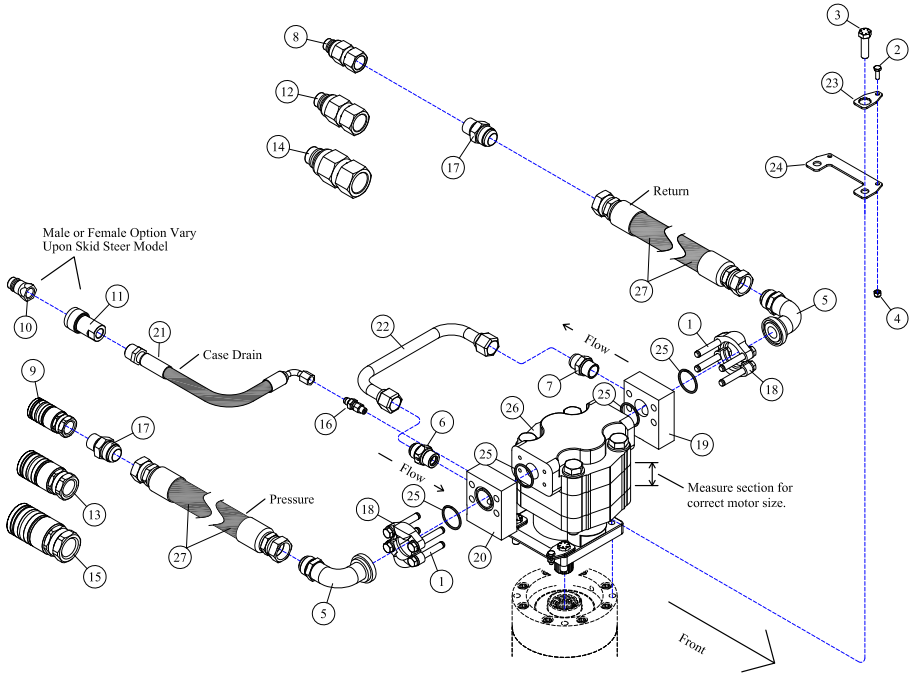


| REF# | PARTS DESCRIPTION | REQ | PART # |
|------|-------------------------------------|-----|---------|
| 1 | 3/8 HI-COLLAR LOCK WASHER | 3 | 11-0054 |
| 2 | 1/2 X 2-1/4 NC HEX CAPSCREW | 4 | 11-0531 |
| 3 | 1/4 X 3/4 NC HEX CAP | 4 | 11-0588 |
| 4 | 1/2-20 X 1-3/4 H.S. NF HEX CAP GR 8 | 4 | 11-0664 |
| 5 | 3/8 X 2-1/2 NC SOCKET HEAD CAPSCREW | 3 | 11-0701 |
| 6 | 1/2 NC NYLOCK NUT | 4 | 11-1018 |
| 7 | 1/4 NC NYLOCK NUT | 4 | 11-1022 |
| 8 | #12 FLGX IMJIC-90DEG ADAPTER | 2 | 21-1302 |
| 9 | 1/2 MALE QUICK COUPLER, FLAT FACE | 1 | 21-1559 |
| 10 | 1/2 FEMALE QUICK COUPLER, FLAT FACE | 1 | 21-1560 |
| 11 | 5/8 MALE QUICK COUPLER, FLAT FACE | 1 | 21-1574 |
| 12 | 5/8 FEMALE QUICK COUPLER, FLAT FACE | 1 | 21-1575 |
| 13 | 3/4 MALE QUICK COUPLER, FLAT FACE | 1 | 21-1576 |
| 14 | 3/4 FEMALE QUICK COUPLER, FLAT FACE | 1 | 21-1577 |
| 15 | ADAPTER, IMJIC X 3/4MORB | 2 | 21-1602 |

| REF# | PARTS DESCRIPTION | REQ | PART # |
|------|--|-----|---------|
| 16 | #12 FLANGE KIT | 2 | 21-2186 |
| 17 | O-RING(SMALL) (included with #30-1206) | 2 | 30-1205 |
| 18 | PRESSURE AND RETURN BLOCK (included with motors) | 1 | 30-1206 |
| 19 | MOTOR BOLT LOCK TAB | 4 | 31-0503 |
| 20 | MOTOR BOLT LOCK BASE | 2 | 31-0504 |
| 21 | O-RING(LARGE) (included with #21-2186) | 2 | 33-0062 |
| 22 | MOTOR SPACER | 1 | 35-0075 |
| 23 | HOSE 1" (1EHC X 1EHC) | | |
| | "STANDARD", PRESSURE & RETURN 103" | 2 | 21-4345 |
| | "OPTIONAL UPGRADE" 4000 psi, PRESSURE 103" | 1 | 21-4346 |
| | "OPTIONAL UPGRADE" 4000 psi, RETURN 90" | 1 | 21-4365 |
| 24 | MOTOR (includes #30-1206) | | |
| | 2000 SERIES, 11/16" SECT, 16-23 GAL/MIN | 1 | 30-0528 |
| | 2000 SERIES, 7/8" SECT, 24-28 GAL/MIN | 1 | 30-0529 |

60"(153cm) DECK

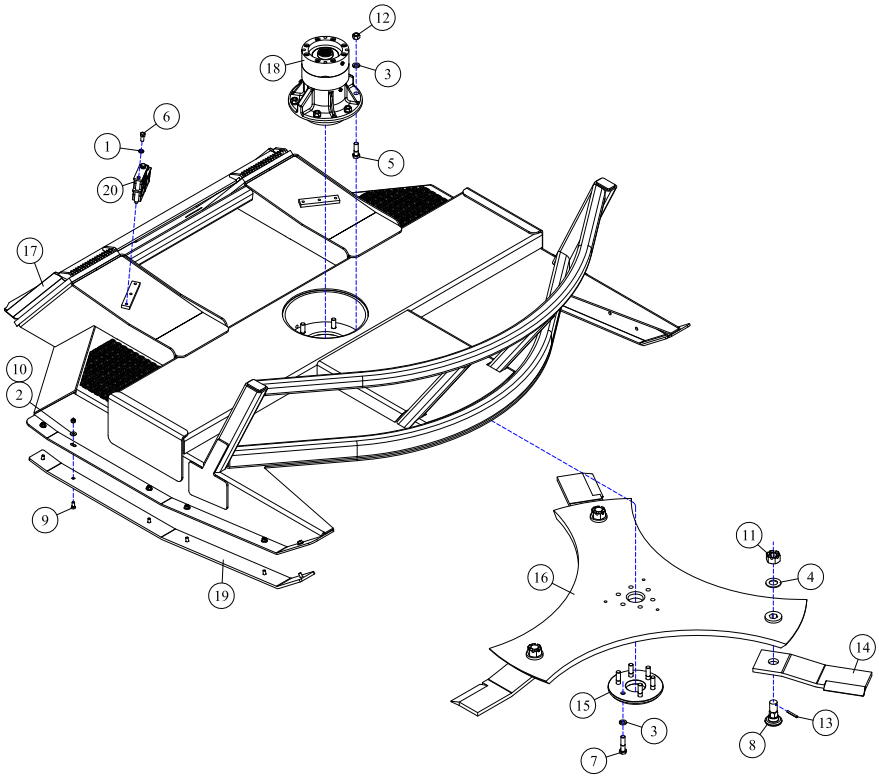
Drive Assembly: 20-46 GPM (76-141 LPM)



| REF# | PARTS DESCRIPTION | REQ | PART # |
|------|---|-----|---------|
| 1 | 7/16 X 3 NC HEX CAPSCREW (included with #19 & 20) | 8 | 11-0587 |
| 2 | 1/4 X 3/4 NC HEX CAP | 4 | 11-0588 |
| 3 | 1/2-20 X 1-3/4 H.S. NF HEX CAP GR 8 | 4 | 11-0664 |
| 4 | 1/4 NC NYLOCK NUT | 4 | 11-1022 |
| 5 | #20FLG X 1MJC-90DEG ADAPTER | 2 | 21-1267 |
| 6 | CHECK VALVE | 1 | 21-1474 |
| 7 | 3/4 MORBX 3/4 MJC ADAPTER | 1 | 21-1475 |
| 8 | 1/2 MALE QUICK COUPLER, FLAT FACE | 1 | 21-1559 |
| 9 | 1/2 FEMALE QUICK COUPLER, FLAT FACE | 1 | 21-1560 |
| 10 | 3/8 MALE QUICK COUPLER, FLAT FACE | 1 | 21-1561 |
| 11 | 3/8 FEMALE QUICK COUPLER, FLAT FACE | 1 | 21-1562 |
| 12 | 5/8 MALE QUICK COUPLER, FLAT FACE | 1 | 21-1574 |
| 13 | 5/8 FEMALE QUICK COUPLER, FLAT FACE | 1 | 21-1575 |
| 14 | 3/4 MALE QUICK COUPLER, FLAT FACE | 1 | 21-1576 |
| 15 | 3/4 FEMALE QUICK COUPLER, FLAT FACE | 1 | 21-1577 |
| 16 | ADAPTER, 1/4MOR X 3/8MJC | 1 | 21-1597 |

| REF# | PARTS DESCRIPTION | REQ | PART # |
|------|---|-------------|-------------------------------|
| 17 | ADAPTER, 1MJC X 3/4MORB | 2 | 21-1602 |
| 18 | #20 FLANGE KIT (included with #19 & 20) | 2 | 21-2105 |
| 19 | CROSS OVER MANIFOLD KIT (includes #1, 18 & 25) | 1 | 21-2180 |
| 20 | TEE MANIFOLD KIT (includes #1, 18 & 25) | 1 | 21-2181 |
| 21 | HOSE 3/8 X 106 (3/8FJIC 90DEG X 1/2MP) | 1 | 21-4290 |
| 22 | RUN-AROUND TUBE | 1 | 28-4051 |
| 23 | MOTOR BOLT LOCK TAB | 4 | 31-0503 |
| 24 | MOTOR BOLT LOCK BASE | 2 | 31-0504 |
| 25 | O-RING (included with #18, 19 & 20) | 4 | 33-0013 |
| 26 | MOTOR M365, 2-1/4" GEAR SET, 2-3/4" SECT, 32-45 GAL/MIN | 1 | 30-0524 |
| 27 | HOSE 1" (1EJC X 1EJC) "STANDARD", PRESSURE & RETURN 103" "OPTIONAL UPGRADE" 4000 psi, PRESSURE 103" "OPTIONAL UPGRADE" 4000 psi, RETURN 90" | 2 1 1 | 21-4345 21-4346 21-4365 |

72"(183cm) DECK
25-1323

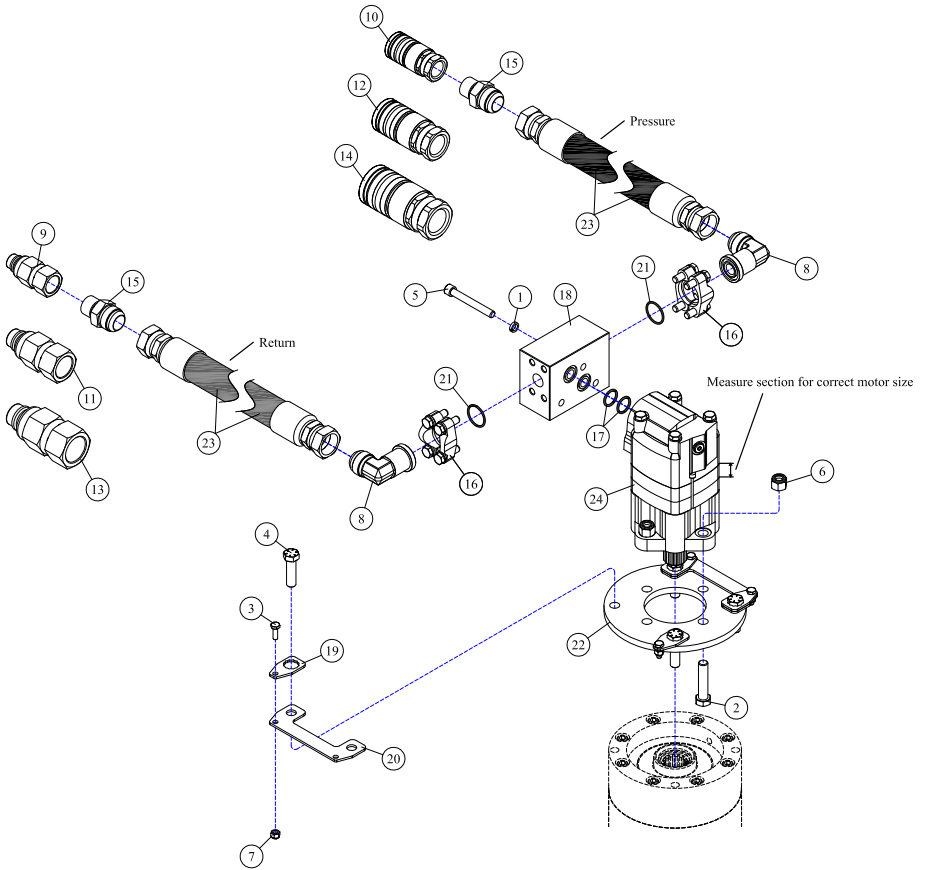


| REF# | PARTS DESCRIPTION | REQ | PART # |
|------|----------------------------------|-----|---------|
| 1 | 7/16 LOCK WASHER GR 5 | 3 | 11-0003 |
| 2 | 5/16 FLAT WASHER | 12 | 11-0015 |
| 3 | 5/8 H.S. LOCK WASHER | 12 | 11-0043 |
| 4 | 1-1/8 H.S. SAE FLAT WASHER | 3 | 11-0057 |
| 5 | 5/8 X 2 H.S. NF HEX CAPSCREW | 6 | 11-0508 |
| 6 | 7/16 X 1 NC HEX CAP | 3 | 11-0584 |
| 7 | 5/8 X 2-1/4 H.S. NF HEX CAPSCREW | 6 | 11-0691 |
| 8 | BLADE BOLT - HEX BASE | 3 | 11-0759 |
| 9 | 3/8 X 1-1/4 PLOW BOLT | 12 | 11-0804 |
| 10 | 3/8 NC NYLOCK NUT | 12 | 11-1024 |

| REF# | PARTS DESCRIPTION | REQ | PART # |
|------|-------------------------------|-----|---------|
| 11 | 1-1/8 H.S. NF SLOTTED HEX NUT | 3 | 11-1050 |
| 12 | 5/8 H.S. NF STOVER NUT | 6 | 11-1143 |
| 13 | ROLL PIN, 1/4 X 2 | 3 | 11-2005 |
| 14 | 5/8" BRUSH BLADE | 3 | 22-0006 |
| 15 | BOLT PROTECTOR | 1 | 24-0004 |
| 16 | DISH | 1 | 24-0151 |
| 17 | 72" DECK SHELL | 1 | 25-0112 |
| 18 | SPINDLE ASSEMBLY | 1 | 35-0088 |
| 19 | SKID SHOE | 2 | 42-0032 |
| 20 | HOSE CLAMP | 1 | 44-0351 |

72"(183cm) DECK

Drive Assembly: 17-41 GPM (65-155 LPM)

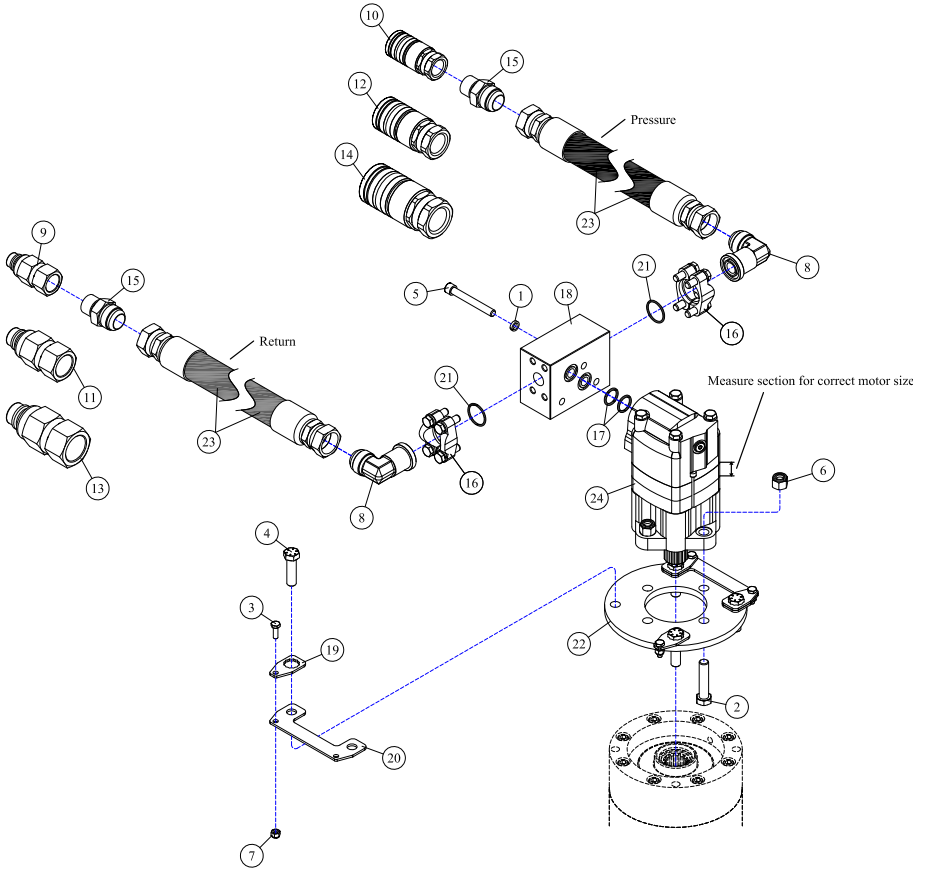


| REF# | PARTS DESCRIPTION | REQ | PART # |
|------|-------------------------------------|-----|---------|
| 1 | 3/8 HI-COLLAR LOCK WASHER | 3 | 11-0054 |
| 2 | 1/2 X 2-1/4 NC HEX CAPSCREW | 4 | 11-0531 |
| 3 | 1/4 X 3/4 NC HEX CAP | 4 | 11-0588 |
| 4 | 1/2-20 X 1-3/4 H.S. NF HEX CAP GR.8 | 4 | 11-0664 |
| 5 | 3/8 X 2-1/2 NC SOCKET HEAD CAPSCREW | 3 | 11-0701 |
| 6 | 1/2 NC NYLOCK NUT | 4 | 11-1018 |
| 7 | 1/4 NC NYLOCK NUT | 4 | 11-1022 |
| 8 | #12FLGX 1MJIC-90DEG ADAPTER | 2 | 21-1302 |
| 9 | 1/2 MALE QUICK COUPLER, FLAT FACE | 1 | 21-1559 |
| 10 | 1/2 FEMALE QUICK COUPLER, FLAT FACE | 1 | 21-1560 |
| 11 | 5/8 MALE QUICK COUPLER, FLAT FACE | 1 | 21-1574 |
| 12 | 5/8 FEMALE QUICK COUPLER, FLAT FACE | 1 | 21-1575 |
| 13 | 3/4 MALE QUICK COUPLER, FLAT FACE | 1 | 21-1576 |
| 14 | 3/4 FEMALE QUICK COUPLER, FLAT FACE | 1 | 21-1577 |
| 15 | ADAPTER, IMJIC 3/4MORB | 2 | 21-1602 |

| REF# | PARTS DESCRIPTION | REQ | PART # |
|------|---|-----|---------|
| 16 | #12 FLANGE KIT | 2 | 21-2186 |
| 17 | O-RING (SMALL) (included with #30-1206) | 2 | 30-1205 |
| 18 | PRESSURE AND RETURN BLOCK (2" fluded with motors) | 1 | 30-1206 |
| 19 | MOTOR BOLT LOCK TAB | 4 | 31-0503 |
| 20 | MOTOR BOLT LOCK BASE | 2 | 31-0504 |
| 21 | O-RING (LARGE) (included with #21-2186) | 2 | 33-0062 |
| 22 | MOTOR SPACER | 1 | 35-0075 |
| 23 | HOSE 1 X 103 (1EJIC X 1EJIC) | | |
| | "STANDARD" | 2 | 21-4345 |
| | "OPTIONAL UPGRADE" 4000 psi | 2 | 21-4346 |
| 24 | MOTOR (includes #30-1206) | | |
| | 2000 SERIES, 11/16" SECT, 17-20 GAL/MIN | 1 | 30-0528 |
| | 2000 SERIES, 7/8" SECT, 21-28 GAL/MIN | 1 | 30-0529 |

72"(183cm) DECK

Drive Assembly: 17-28 GPM (65-106 LPM)

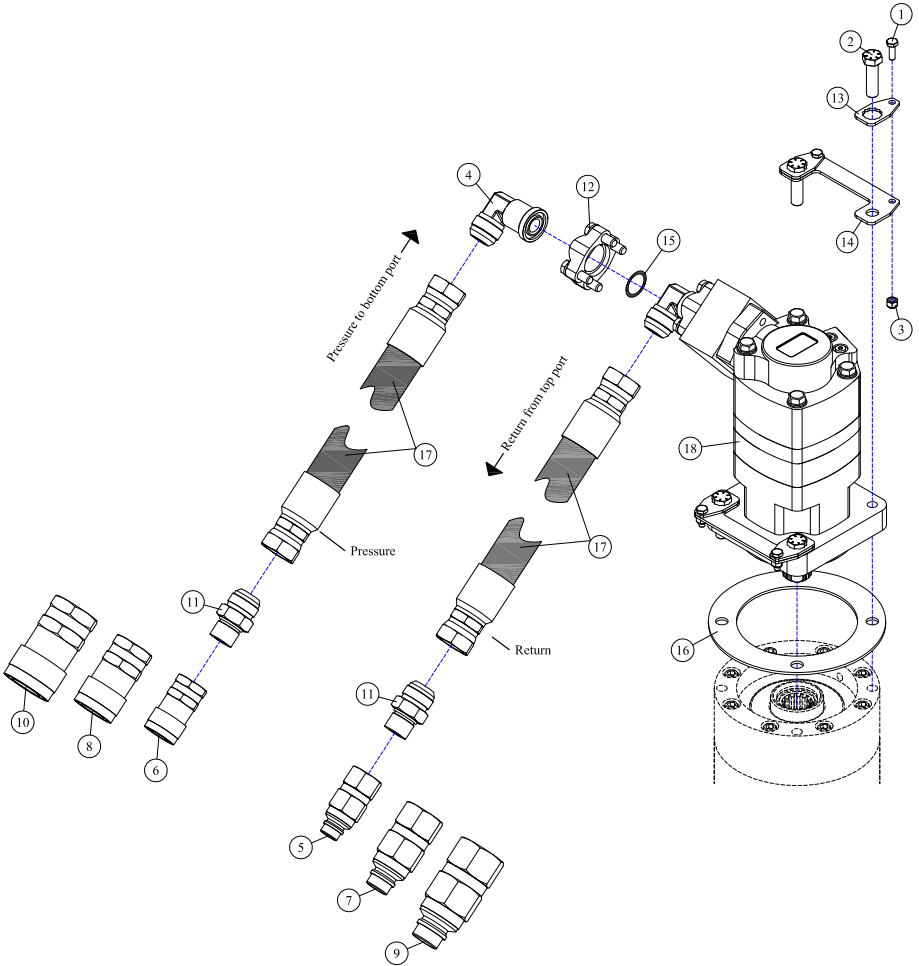


| REF# | PARTS DESCRIPTION | REQ | PART # |
|------|-------------------------------------|-----|---------|
| 1 | 3/8 HI-COLLAR LOCK WASHER | 3 | 11-0054 |
| 2 | 1/2 X 2-1/4 NC HEX CAPSCREW | 4 | 11-0531 |
| 3 | 1/4 X 3/4 NC HEX CAP | 4 | 11-0588 |
| 4 | 1/2-20 X 1-3/4 H.S. NF HEX CAP GR.8 | 4 | 11-0664 |
| 5 | 3/8 X 2-1/2 NC SOCKET HEAD CAPSCREW | 3 | 11-0701 |
| 6 | 1/2 NC NYLOCK NUT | 4 | 11-1018 |
| 7 | 1/4 NC NYLOCK NUT | 4 | 11-1022 |
| 8 | #12FLGX IMJIC-90DEG ADAPTER | 2 | 21-1302 |
| 9 | 1/2 MALE QUICK COUPLER, FLAT FACE | 1 | 21-1559 |
| 10 | 1/2 FEMALE QUICK COUPLER, FLAT FACE | 1 | 21-1560 |
| 11 | 5/8 MALE QUICK COUPLER, FLAT FACE | 1 | 21-1574 |
| 12 | 5/8 FEMALE QUICK COUPLER, FLAT FACE | 1 | 21-1575 |
| 13 | 3/4 MALE QUICK COUPLER, FLAT FACE | 1 | 21-1576 |
| 14 | 3/4 FEMALE QUICK COUPLER, FLAT FACE | 1 | 21-1577 |
| 15 | ADAPTER, IMJIC X 3/4MORB | 2 | 21-1602 |

| REF# | PARTS DESCRIPTION | REQ | PART # |
|------|--|-----|---------|
| 16 | #12 FLANGE KIT | 2 | 21-2186 |
| 17 | O-RING(SMALL) (included with #30-1206) | 2 | 30-1205 |
| 18 | PRESSURE AND RETURN BLOCK (included with motors) | 1 | 30-1206 |
| 19 | MOTOR BOLT LOCK TAB | 4 | 31-0503 |
| 20 | MOTOR BOLT LOCK BASE | 2 | 31-0504 |
| 21 | O-RING(LARGE) (included with #21-2186) | 2 | 33-0062 |
| 22 | MOTOR SPACER | 1 | 35-0075 |
| 23 | HOSE 1 X 103 (1EJIC X 1EJIC) | | |
| | "STANDARD" | 2 | 21-4345 |
| | "OPTIONAL UPGRADE" 4000 psi | 2 | 21-4346 |
| 24 | MOTOR (includes #30-1206) | | |
| | 2000 SERIES, 11/16" SECT, 17-20 GAL/MIN | 1 | 30-0528 |
| | 2000 SERIES, 7/8" SECT, 21-28 GAL/MIN | 1 | 30-0529 |

72"(183cm) DECK

Drive Assembly: 26-32 GPM (99-121 LPM)

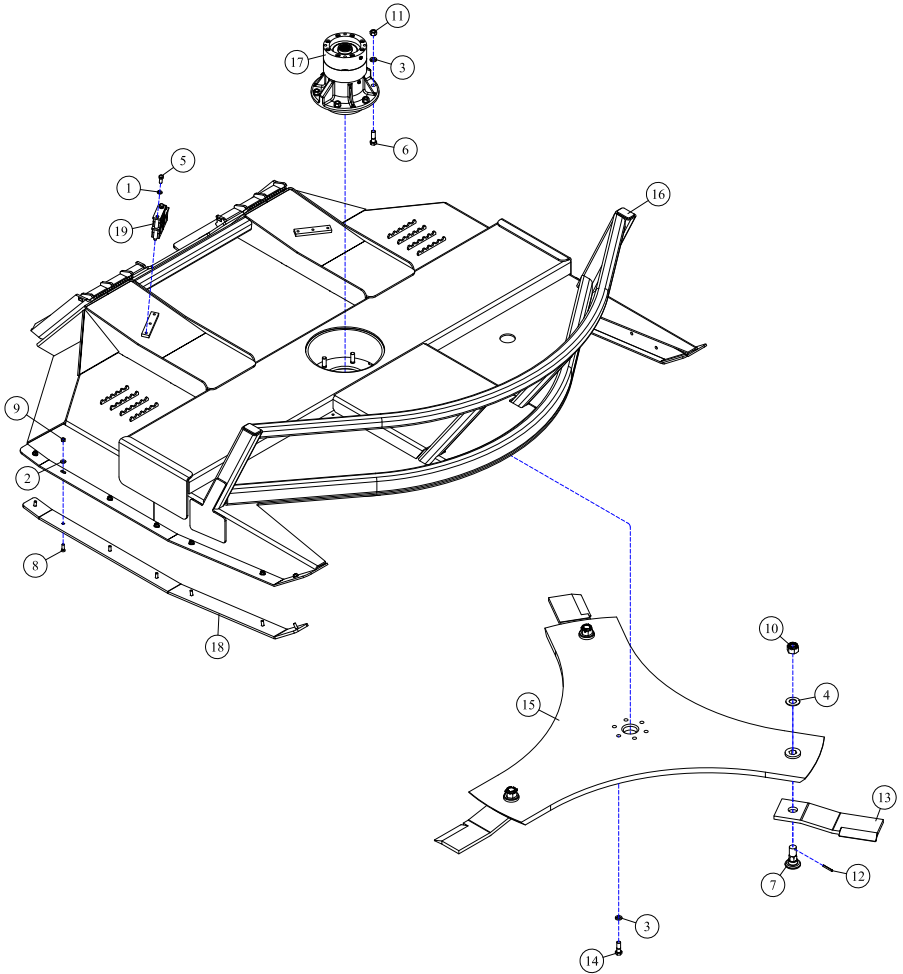


| REF# | PARTS DESCRIPTION | REQ | PART # |
|------|-------------------------------------|-----|---------|
| 1 | 1/4 X 3/4 NC HEX CAP | 4 | 11-0588 |
| 2 | 1/2-20 X 1-3/4 H.S. NF HEX CAP GR.8 | 4 | 11-0664 |
| 3 | 1/4 NC NYLOCK NUT | 4 | 11-1022 |
| 4 | #12FLG X 1MJIC-90DEG ADAPTER | 2 | 21-1302 |
| 5 | 1/2 MALE-QUICK COUPLER, FLAT FACE | 1 | 21-1559 |
| 6 | 1/2 FEMALE-QUICK COUPLER, FLAT FACE | 1 | 21-1560 |
| 7 | 5/8 MALE-QUICK COUPLER, FLAT FACE | 1 | 21-1574 |
| 8 | 5/8 FEMALE-QUICK COUPLER, FLAT FACE | 1 | 21-1575 |
| 9 | 3/4 MALE-QUICK COUPLER, FLAT FACE | 1 | 21-1576 |
| 10 | 3/4 FEMALE-QUICK COUPLER, FLAT FACE | 1 | 21-1577 |
| 11 | ADAPTER, IMJIC X 3/4MORB | 2 | 21-1602 |

| REF# | PARTS DESCRIPTION | REQ | PART # |
|------|-------------------------------------|-----|---------|
| 12 | #12 FLANGE KIT | 2 | 21-2186 |
| 13 | MOTOR BOLT LOCK TAB | 4 | 31-0503 |
| 14 | MOTOR BOLT LOCK BASE | 2 | 31-0504 |
| 15 | O-RING (included with #21-2186) | 2 | 33-0062 |
| 16 | MOTOR SPACER | 1 | 35-0076 |
| 17 | HOSE 1 X 103 (1EJIC X 1EJIC) | | |
| | "STANDARD" | 2 | 21-4345 |
| | "OPTIONAL UPGRADE" 4000 psi | 2 | 21-4346 |
| 18 | MOTOR | | |
| | 4000 SERIES, 25-32 GAL/MIN | 1 | 30-0527 |

84"(214cm) DECK

25-1442

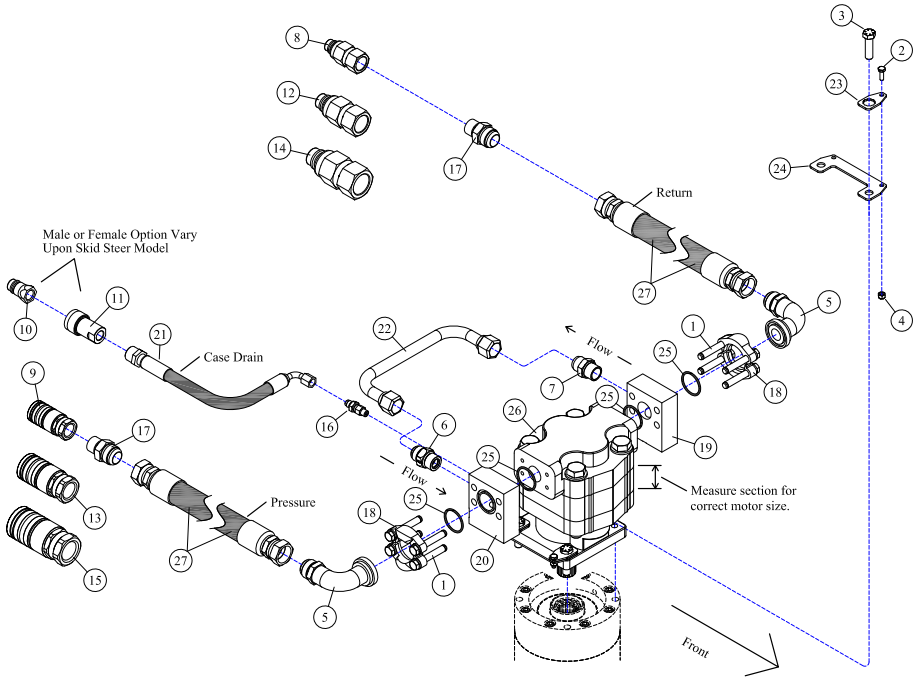


| REF# | PARTS DESCRIPTION | REQ | PART # |
|------|----------------------------------|-----|---------|
| 1 | 7/16 LOCK WASHER GR 5 | 3 | 11-0003 |
| 2 | 5/16 FLAT WASHER | 14 | 11-0015 |
| 3 | 5/8 H.S. LOCK WASHER | 12 | 11-0043 |
| 4 | 1-1/8 H.S. SAE FLAT WASHER | 3 | 11-0057 |
| 5 | 7/16 X 1 NC HEX CAP | 3 | 11-0584 |
| 6 | 5/8 X 2-1/4 H.S. NF HEX CAPSCREW | 6 | 11-0691 |
| 7 | BLADE BOLT - HEX BASE | 3 | 11-0759 |
| 8 | 3/8 X 1-1/4 PLOW BOLT | 14 | 11-0804 |
| 9 | 3/8 NC NYLOCK NUT | 14 | 11-1024 |
| 10 | 1-1/8 H.S. NF SLOTTED HEX NUT | 3 | 11-1050 |

| REF# | PARTS DESCRIPTION | REQ | PART # |
|------|----------------------------------|-----|---------|
| 11 | 5/8 H.S. NF STOVER NUT | 6 | 11-1143 |
| 12 | ROLL PIN, 1/4 X 2 | 3 | 11-2005 |
| 13 | 5/8" BRUSH BLADE | 3 | 22-0006 |
| 14 | 5/8 X 1-3/4 H.S. NF HEX CAPSCREW | 6 | 11-2107 |
| 15 | 84" DISH (serial # 21826 and up) | 1 | 24-0290 |
| 16 | 84" DECK SHELL | 1 | 25-0182 |
| 17 | SPINDLE ASSEMBLY | 1 | 35-0088 |
| 18 | 84" SKID SHOE | 2 | 42-0043 |
| 19 | HOSE CLAMP | 1 | 44-0351 |

84"(214cm) DECK

Drive Assembly: 32-40 GPM (122-152 LPM)



| REF# | PARTS DESCRIPTION | REQ | PART # |
|------|---|-----|---------|
| 1 | 7/16 X 3 NC HEX CAPSCREW (included with #19 & 20) | 8 | 11-0587 |
| 2 | 1/4 X 3/4 NC HEX CAP | 4 | 11-0588 |
| 3 | 1/2-20 X 1-3/4 H.S. NF HEX CAP GR 8 | 4 | 11-0664 |
| 4 | 1/4 NC NYLOCK NUT | 4 | 11-1022 |
| 5 | #20FLGX 1MJIC-90DEG ADAPTER | 2 | 21-1267 |
| 6 | CHECK VALVE | 1 | 21-1474 |
| 7 | 3/4 MORBX 3/4 MJIC ADAPTER | 1 | 21-1475 |
| 8 | 1/2 MALE QUICK COUPLER, FLAT FACE | 1 | 21-1559 |
| 9 | 1/2 FEMALE QUICK COUPLER, FLAT FACE | 1 | 21-1560 |
| 10 | 3/8 MALE QUICK COUPLER, FLAT FACE | 1 | 21-1561 |
| 11 | 3/8 FEMALE QUICK COUPLER, FLAT FACE | 1 | 21-1562 |
| 12 | 5/8 MALE QUICK COUPLER, FLAT FACE | 1 | 21-1574 |
| 13 | 5/8 FEMALE QUICK COUPLER, FLAT FACE | 1 | 21-1575 |
| 14 | 3/4 MALE QUICK COUPLER, FLAT FACE | 1 | 21-1576 |
| 15 | 3/4 FEMALE QUICK COUPLER, FLAT FACE | 1 | 21-1577 |
| 16 | ADAPTER, 1/4MOR X 3/8MJIC | 1 | 21-1597 |

| REF# | PARTS DESCRIPTION | REQ | PART # |
|------|--|-----|---------|
| 17 | ADAPTER, 1MJIC X 3/4MORB | 2 | 21-1602 |
| 18 | #20 FLANGE KIT (included with #19 & 20) | 2 | 21-2105 |
| 19 | CROSS OVER MANIFOLD KIT (includes #1, 18 & 25) | 1 | 21-2180 |
| 20 | TEE MANIFOLD KIT (includes #1, 18 & 25) | 1 | 21-2181 |
| 21 | HOSE 3/8 X 106 (3/8FJIC 90DEG X 1/2MP) | 1 | 21-4290 |
| 22 | RUN-AROUND TUBE | 1 | 28-0051 |
| 23 | MOTOR BOLT LOCK TAB | 4 | 31-0503 |
| 24 | MOTOR BOLT LOCK BASE | 2 | 31-0504 |
| 25 | O-RING (included with #18, 19 & 20) | 4 | 33-0013 |
| | MOTOR | | |
| | M365, 2-1/2" GEAR SET, 3" SECT, 32-40 GAL/MIN | 1 | 30-0518 |
| 27 | HOSE 1 X 103 (1FJIC X 1FJIC) | | |
| | "STANDARD" | 2 | 21-4345 |
| | "OPTIONAL UPGRADE" 4000 psi | 2 | 21-4346 |

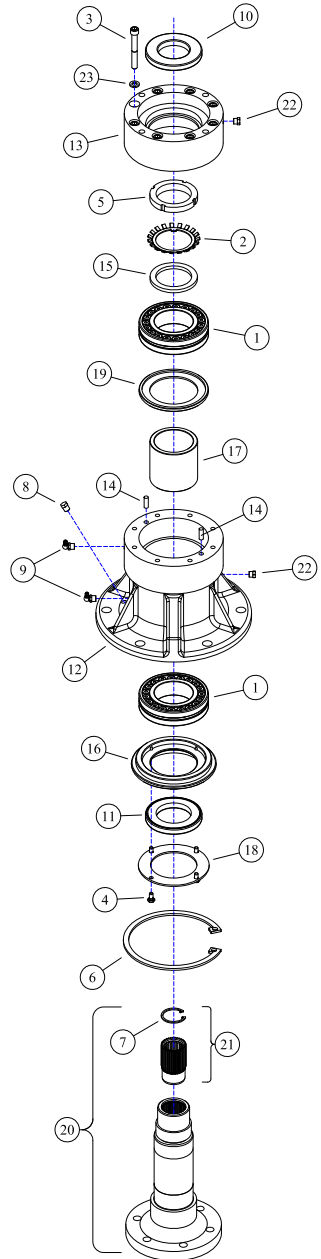
DIRECT DRIVE SPINDLE 35-0088

Grease with #2 lithium based grease every 500hrs.
Use 10 pumps (.44oz) into each of the two grease
zerks.

Warning: Do not overgrease
Overgreasing will cause damage or premature failure
of the bearings, housing & seals.

| REF# | PARTS DESCRIPTION | REQ | PART # |
|------|----------------------------------|-----|---------|
| 1 | BEARING | 2 | 10-0055 |
| 2 | LOCKING W WASHER | 1 | 11-0048 |
| 3 | 3/8 X 2-3/4 NC SKT HEAD CAPSCREW | 8 | 11-0703 |
| 4 | 1/4 X 1/2 NC CAPSCREW | 4 | 11-0741 |
| 5 | 2-1/2 SPANNER NUT | 1 | 11-1037 |
| 6 | LARGE SNAP RING | 1 | 11-2021 |
| 7 | SMALL SNAP RING | 1 | 11-2022 |
| 8 | PIPE PLUG | 1 | 21-1136 |
| 9 | 1/8 X 90 GREASE ZERK | 2 | 23-0005 |
| 10 | UPPER SEAL | 1 | 33-0035 |
| 11 | LOWER SEAL | 1 | 33-0057 |
| 12 | SPINDLE HOUSING | 1 | 35-0021 |
| 13 | SEAL/MOTOR MOUNT | 1 | 35-0022 |
| 14 | ALIGNMENT PIN | 2 | 35-0032 |
| 15 | SPACER | 1 | 35-0050 |
| 16 | BOTTOM SEAL PLATE | 1 | 35-0063 |
| 17 | SPACER | 1 | 35-0064 |
| 18 | BOTTOM PLATE | 1 | 35-0065 |
| 19 | GREASE CATCH | 1 | 35-0066 |
| 20 | SPINDLE SHAFT COMPLETE | 1 | 35-0090 |
| *21 | SPLINED INSERT KIT | 1 | 35-0091 |
| 22 | BREATHER | 2 | 80-1016 |
| 23 | 3/8 LOCK WASHER CR 5 | 8 | 11-0005 |

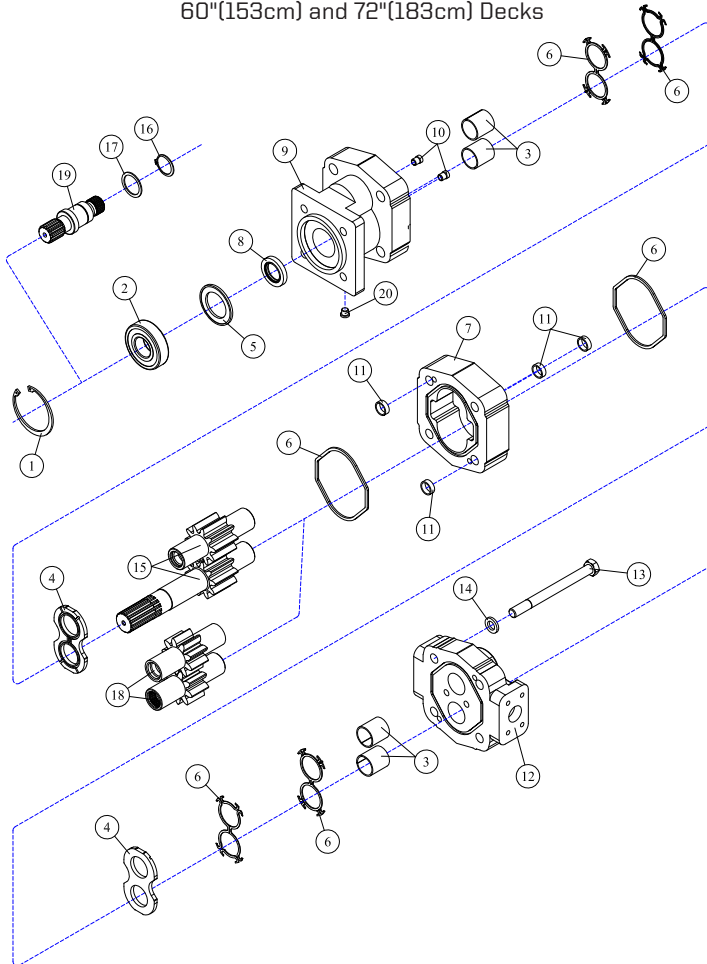
* The splined insert kit includes the insert removal tool 11-0913.



MOTOR ASSEMBLY

30-0515

60"(153cm) and 72"(183cm) Decks



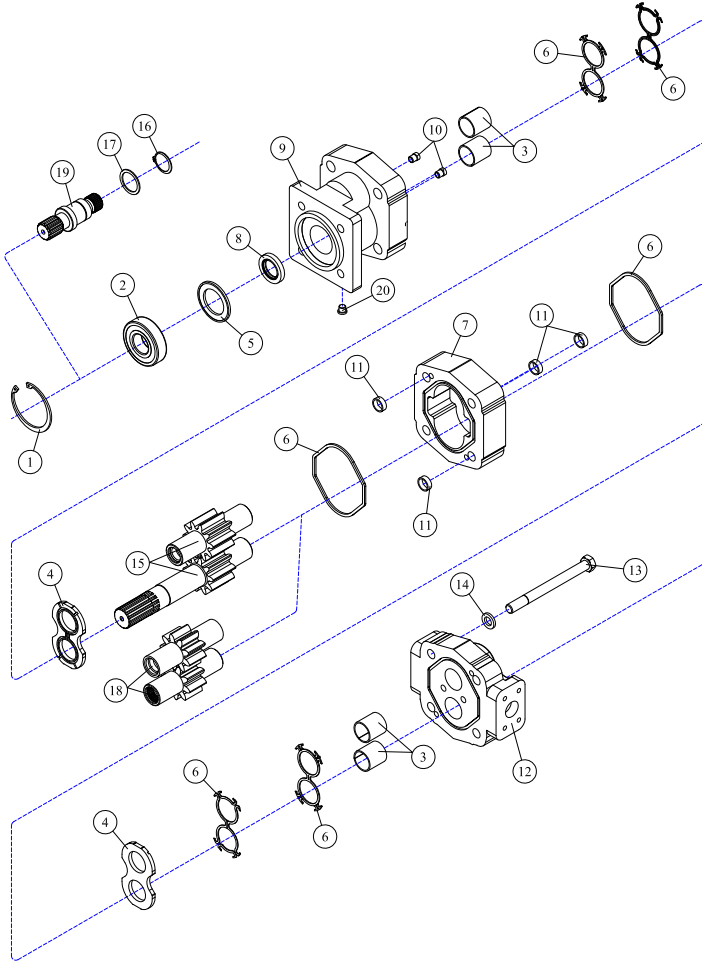
| REF# | PARTS DESCRIPTION | REQ | PART # |
|------|-------------------------------------|-------|---------|
| 1 | SNAP RING | 1 | 30-1009 |
| 2 | OUTBOARD BEARING | 1 | 30-1010 |
| 3 | BUSHING | 4 | 30-1011 |
| 4 | THRUST PLATE | 2 | 30-1012 |
| 5 | SEAL RETAINER | 1 | 30-1017 |
| 6 | M365 SEAL KIT | Avail | 30-1021 |
| 7 | GEAR HOUSING | 1 | 30-1023 |
| 8 | SHAFT SEAL | | |
| | 150 PSI (included in M365 seal kit) | 1 | 30-1210 |
| | 500 PSI | 1 | 30-1156 |
| 9 | SHAFT END COVER | 1 | 30-1086 |
| 10 | CHECK ASSEMBLY | 2 | 30-1087 |
| 11 | ALIGNMENT BUSHING | 4 | 30-1090 |

| REF# | PARTS DESCRIPTION | REQ | PART # |
|------|--|-------|---------|
| 12 | PORT END COVER | 1 | 30-1091 |
| 13 | STUD | 4 | 30-1092 |
| 14 | WASHER | 4 | 30-1093 |
| 15 | GEAR SET OPTION A: 1-1/2" GEAR SET | 1 | 30-1159 |
| | GEAR SET OPTION B: | | |
| 16 | RETAINING RING | 1 | 30-1019 |
| 17 | WASHER | 1 | 30-1020 |
| 18 | 1-1/2" GEAR SET | 1 | 30-1022 |
| 19 | CONTINENTAL SHAFT, SPLINED | 1 | 30-1144 |
| 20 | PLUG | 1 | 30-1096 |
| * | SEAL APPLICATOR TOOL (not shown) | Avail | 30-1048 |

MOTOR ASSEMBLY

30-0518

60"(153cm), 72"(183cm), and 84"(214cm) Decks



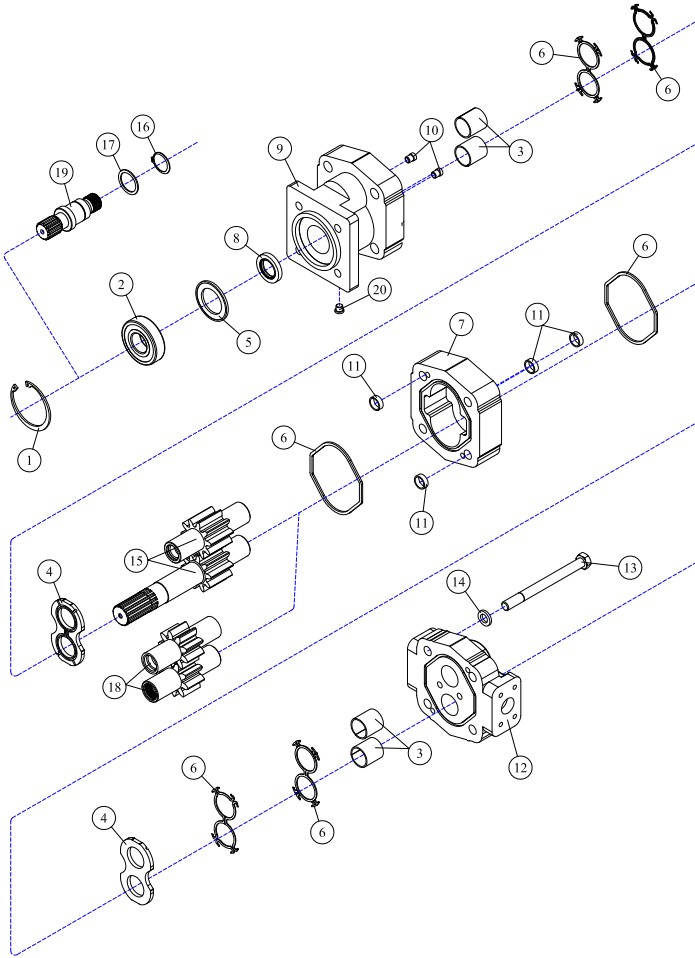
| REF# | PARTS DESCRIPTION | REQ | PART # |
|------|-------------------------------------|-------|---------|
| 1 | SNAP RING | 1 | 30-1009 |
| 2 | OUTBOARD BEARING | 1 | 30-1010 |
| 3 | BUSHING | 4 | 30-1011 |
| 4 | THRUST PLATE | 2 | 30-1012 |
| 5 | SEAL RETAINER | 1 | 30-1017 |
| 6 | M365 SEAL KIT | Avail | 30-1021 |
| 7 | 2-1/2" M365 GEAR HOUSING | 1 | 30-1137 |
| 8 | SHAFT SEAL | | |
| | 150 PSI (included in M365 seal kit) | 1 | 30-1210 |
| | 500 PSI | 1 | 30-1156 |
| 9 | SHAFT END COVER | 1 | 30-1086 |
| 10 | CHECK ASSEMBLY | 2 | 30-1087 |
| 11 | ALIGNMENT BUSHING | 4 | 30-1090 |

| REF# | PARTS DESCRIPTION | REQ | PART # |
|------|----------------------------------|-------|---------|
| 12 | PORT END COVER | 1 | 30-1091 |
| 13 | STUD | 4 | 30-1334 |
| 14 | WASHER | 4 | 30-1093 |
| | GEAR SET OPTION A: | | |
| 15 | 2-1/2" GEAR SET | 1 | 30-1170 |
| | GEAR SET OPTION B: | | |
| 16 | RETAINING RING | 1 | 30-1019 |
| 17 | WASHER | 1 | 30-1020 |
| 18 | 2-1/2" GEAR SET | 1 | 30-1136 |
| 19 | CONTINENTAL SHAFT, SPLINED | 1 | 30-1144 |
| 20 | PLUG | 1 | 30-1096 |
| * | SEAL APPLICATOR TOOL (not shown) | Avail | 30-1048 |

MOTOR ASSEMBLY

30-0520

60"(153cm) and 72"(183cm) Decks



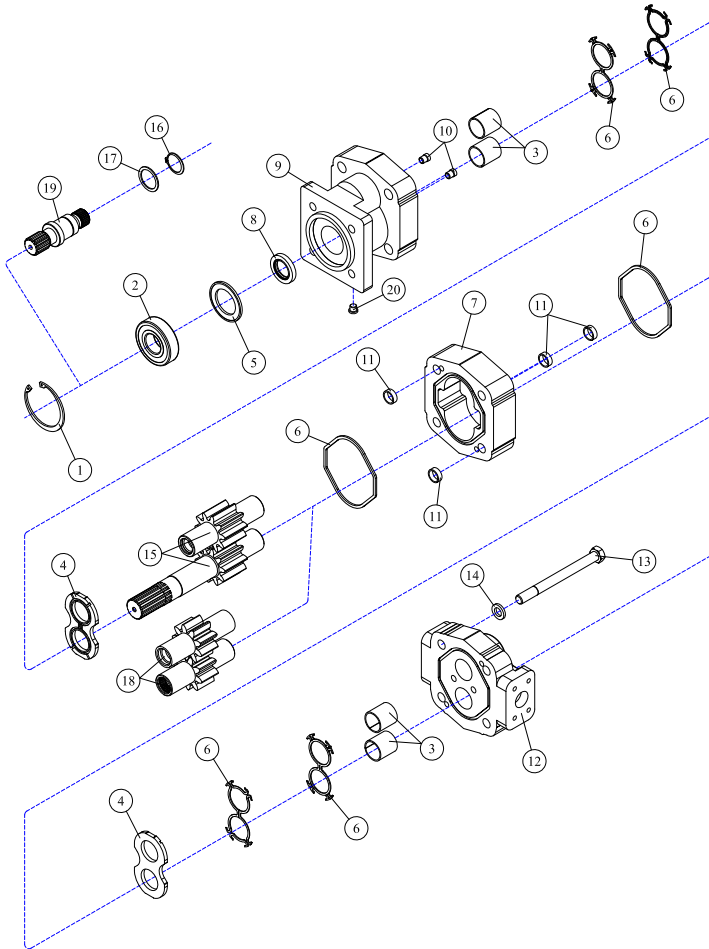
| REF# | PARTS DESCRIPTION | REQ | PART # |
|------|-------------------------------------|-------|---------|
| 1 | SNAP RING | 1 | 30-1009 |
| 2 | OUTBOARD BEARING | 1 | 30-1010 |
| 3 | BUSHING | 4 | 30-1011 |
| 4 | THRUST PLATE | 2 | 30-1012 |
| 5 | SEAL RETAINER | 1 | 30-1017 |
| 6 | M365 SEAL KIT | Avail | 30-1021 |
| 7 | GEAR HOUSING | 1 | 30-1015 |
| 8 | SHAFT SEAL | | |
| | 150 PSI (included in M365 seal kit) | 1 | 30-1210 |
| | 500 PSI | 1 | 30-1156 |
| 9 | SHAFT END COVER | 1 | 30-1086 |
| 10 | CHECK ASSEMBLY | 2 | 30-1087 |
| 11 | ALIGNMENT BUSHING | 4 | 30-1090 |

| REF# | PARTS DESCRIPTION | REQ | PART # |
|---------------------------|----------------------------------|-------|---------|
| 12 | PORT END COVER | 1 | 30-1091 |
| 13 | STUD | 4 | 30-1092 |
| 14 | WASHER | 4 | 30-1093 |
| GEAR SET OPTION A: | | | |
| 15 | 1-3/4" GEAR SET | 1 | 30-1166 |
| GEAR SET OPTION B: | | | |
| 16 | RETAINING RING | 1 | 30-1019 |
| 17 | WASHER | 1 | 30-1020 |
| 18 | 1-3/4" GEAR SET | 1 | 30-1013 |
| 19 | CONTINENTAL SHAFT, SPLINED | 1 | 30-1144 |
| 20 | PLUG | 1 | 30-1096 |
| * | SEAL APPLICATOR TOOL (not shown) | Avail | 30-1048 |

MOTOR ASSEMBLY

30-0524

60"(153cm) and 72"(183cm) Decks



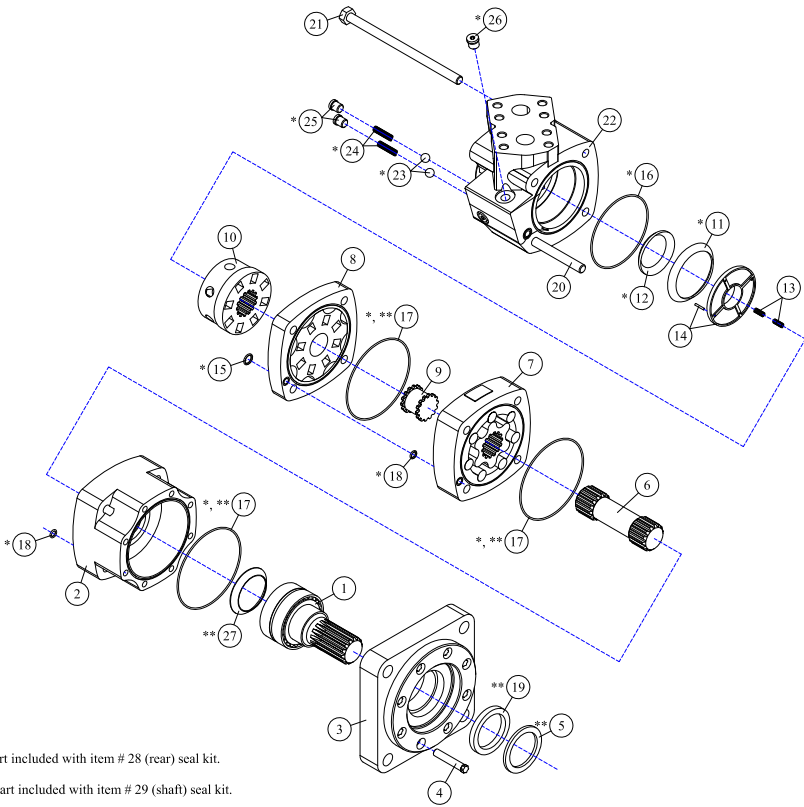
| REF# | PARTS DESCRIPTION | REQ | PART # |
|------|-------------------------------------|-------|---------|
| 1 | SNAP RING | 1 | 30-1009 |
| 2 | OUTBOARD BEARING | 1 | 30-1010 |
| 3 | BUSHING | 4 | 30-1011 |
| 4 | THRUST PLATE | 2 | 30-1012 |
| 5 | SEAL RETAINER | 1 | 30-1017 |
| 6 | M365 SEAL KIT | Avail | 30-1021 |
| 7 | 2-1/4" M365 GEAR HOUSING | 1 | 30-1026 |
| 8 | SHAFT SEAL | | |
| | 150 PSI (included in M365 seal kit) | 1 | 30-1210 |
| | 500 PSI | 1 | 30-1156 |
| 9 | SHAFT END COVER | 1 | 30-1086 |
| 10 | CHECK ASSEMBLY | 2 | 30-1087 |
| 11 | ALIGNMENT BUSHING | 4 | 30-1090 |

| REF# | PARTS DESCRIPTION | REQ | PART # |
|---------------------------|----------------------------------|-------|---------|
| 12 | PORT END COVER | 1 | 30-1091 |
| 13 | STUD | 4 | Call |
| 14 | WASHER | 4 | 30-1093 |
| GEAR SET OPTION A: | | | |
| 15 | 2-1/4" GEAR SET | 1 | 30-1165 |
| GEAR SET OPTION B: | | | |
| 16 | RETAINING RING | 1 | 30-1019 |
| 17 | WASHER | 1 | 30-1020 |
| 18 | 2-1/4" GEAR SET | 1 | 30-1025 |
| 19 | CONTINENTAL SHAFT, SPLINED | 1 | 30-1144 |
| 20 | PLUG | 1 | 30-1096 |
| * | SEAL APPLICATOR TOOL (not shown) | Avail | 30-1048 |

MOTOR ASSEMBLY

30-0527

72"(183cm) Deck



* Part included with item # 28 (rear) seal kit.

** Part included with item # 29 (shaft) seal kit.

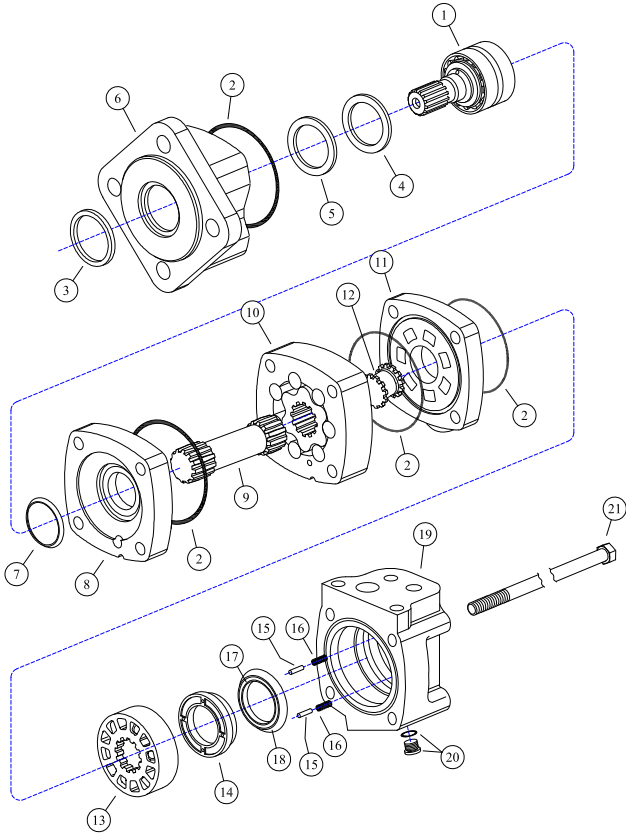
| REF# | PARTS DESCRIPTION | REQ | PART # |
|------|--|-----|---------|
| 1 | SHAFT & BEARING KIT (1-1/4" SPLINED 14T) | 1 | 30-1282 |
| 2 | HOUSING, BEARING | 1 | 30-1285 |
| 3 | FLANGE, MOUNTING | 1 | 30-1286 |
| 4 | SCREW, CAP (6-PT, 5/16 X 1-5/8 NF) | 8 | 30-1287 |
| 5 | **RING, BACK-UP | 1 | 30-1288 |
| 6 | DRIVE, MAIN (CONNECTING DRIVE) | 1 | 30-1289 |
| 7 | GEROLER | 1 | 30-1290 |
| 8 | PLATE, VALVE | 1 | 30-1291 |
| 9 | DRIVE, VALVE | 1 | 30-1292 |
| 10 | VALVE | 1 | 30-1293 |
| 11 | *SEAL, FACE, OUTER | 1 | 30-1294 |
| 12 | *SEAL, FACE, INNER | 1 | 30-1295 |
| 13 | SPRING, COMPRESSION | 2 | 30-1296 |
| 14 | BALANCE RING & PIN ASSEMBLY | 1 | 30-1297 |
| 15 | *O-RING SEAL, SMALL | 1 | 30-1298 |

| REF# | PARTS DESCRIPTION | REQ | PART # |
|------|---------------------------------------|-----|---------|
| 16 | *O-RING SEAL, MEDIUM | 1 | 30-1299 |
| 17 | *, **O-RING SEAL, LARGE | 3 | 30-1300 |
| 18 | *O-RING SEAL, TINY | 2 | 30-1301 |
| 19 | **SEAL, SHAFT | 1 | 30-1302 |
| 20 | SCREW, CAP, BOTTOM (SHORT) | 2 | 30-1303 |
| 21 | SCREW, CAP, TOP (LONG) | 2 | 30-1304 |
| 22 | HOUSING, VALVE | 1 | 30-1305 |
| 23 | *BALL, STEEL (FOR CHECK PLUG) | 2 | 30-1306 |
| 24 | *SPRING, COMPRESSION (FOR CHECK PLUG) | 2 | 30-1307 |
| 25 | *CHECK PLUG ASSEMBLY W/ O-RING | 2 | 30-1308 |
| 26 | *CASE DRAIN PLUG ASSEMBLY W/ O-RING | 1 | 30-1309 |
| 27 | **SEAL, SHAFT FACE | 1 | 30-1310 |
| 28 | SEAL KIT (REAR) | 1 | 33-0070 |
| 29 | SEAL KIT (SHAFT) | 1 | 33-0071 |

MOTOR ASSEMBLY

30-0528

60"(153cm) and 72"(183cm) Decks



* Part included with item # 22 seal kit

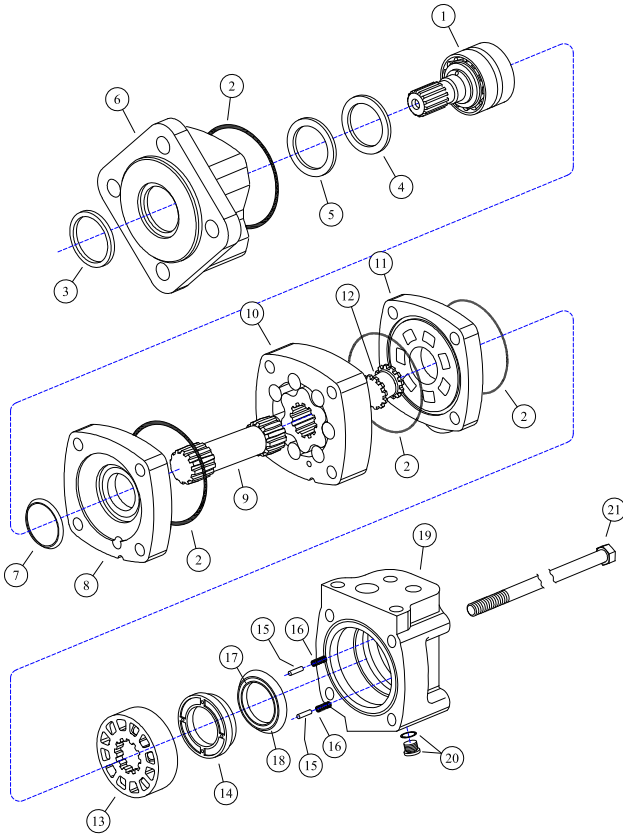
| REF# | PARTS DESCRIPTION | REQ | PART # |
|------|--|-----|---------|
| 1 | SHAFT & BEARING KIT (1-1/4" SPLINED 14T) | 1 | 30-1311 |
| 2 | SEAL | 4 | 30-1312 |
| 3 | SEAL, EXCLUSION | 1 | 30-1313 |
| 4 | SEAL, SHAFT | 1 | 30-1314 |
| 5 | RING, BACK-UP | 1 | 30-1315 |
| 6 | HOUSING, BEARING, DIAGONAL (FOUR BOLT) | 1 | 30-1316 |
| 7 | SEAL, SHAFT FACE | 1 | 30-1317 |
| 8 | PLATE, WEAR | 1 | 30-1318 |
| 9 | DRIVE, MAIN | 1 | 30-1319 |
| 10 | GEROLER | 1 | 30-1320 |
| 11 | PLATE, VALVE | 1 | 30-1321 |
| 12 | DRIVE, VALVE | 1 | 30-1322 |

| REF# | PARTS DESCRIPTION | REQ | PART # |
|------|-------------------------|-----|---------|
| 13 | VALVE | 1 | 30-1323 |
| 14 | BALANCE RING | 1 | 30-1324 |
| 15 | PIN, BALANCE RING | 2 | 30-1325 |
| 16 | SPRING, COMPRESSION | 2 | 30-1326 |
| 17 | SEAL, FACE, INNER | 1 | 30-1327 |
| 18 | SEAL, FACE, OUTER | 1 | 30-1328 |
| 19 | HOUSING, VALVE | 1 | 30-1329 |
| 20 | PLUG ASSEMBLY W/ O-RING | 1 | 30-1309 |
| | O-RING | 1 | 30-1330 |
| 21 | SCREW, CAP | 4 | 30-1331 |
| 22 | SEAL KIT | 1 | 33-0064 |

MOTOR ASSEMBLY

30-0529

72"(183cm) Deck



Part included with item # 22 seal kit

| REF# | PARTS DESCRIPTION | REQ | PART # |
|------|--|-----|---------|
| 1 | SHAFT & BEARING KIT (1-1/4" SPLINED 14T) | 1 | 30-1311 |
| 2 | SEAL | 4 | 30-1312 |
| 3 | SEAL_EXCLUSION | 1 | 30-1313 |
| 4 | SEAL_SHAFT | 1 | 30-1314 |
| 5 | RING_BACK-UP | 1 | 30-1315 |
| 6 | HOUSING, BEARING, DIAGONAL (FOUR BOLT) | 1 | 30-1316 |
| 7 | SEAL_SHAFT FACE | 1 | 30-1317 |
| 8 | PLATE, WEAR | 1 | 30-1318 |
| 9 | DRIVE, MAIN | 1 | 30-1319 |
| 10 | GEROLER | 1 | 30-1320 |
| 11 | PLATE, VALVE | 1 | 30-1321 |
| 12 | DRIVE, VALVE | 1 | 30-1322 |

| REF# | PARTS DESCRIPTION | REQ | PART # |
|------|-------------------------|-----|---------|
| 13 | VALVE | 1 | 30-1323 |
| 14 | BALANCE RING | 1 | 30-1324 |
| 15 | PIN, BALANCE RING | 2 | 30-1325 |
| 16 | SPRING, COMPRESSION | 2 | 30-1326 |
| 17 | SEAL_FACE, INNER | 1 | 30-1327 |
| 18 | SEAL_FACE, OUTER | 1 | 30-1328 |
| 19 | HOUSING VALVE | 1 | 30-1329 |
| 20 | PLUG ASSEMBLY W/ O-RING | 1 | 30-1309 |
| | O-RING | 1 | 30-1330 |
| 21 | SCREW, CAP | 4 | 30-1331 |
| 22 | SEAL KIT | 1 | 33-0064 |

INDEX

| | |
|--------------------------------------|--------------|
| Blades..... | 7, 16 |
| Disc..... | 7, 17 |
| Excessive Vibration | 22 |
| High Flow..... | 8, 22 |
| Hoses..... | 7, 9, 15, 17 |
| Hydraulic Hoses & Fittings..... | 15, 17 |
| Maintenance Intervals | 15 |
| Motor Bolts | 15, 18 |
| Operating Techniques | 12 |
| Cleaning & Reprocessing | 13 |
| Finished Mow..... | 12 |
| Grass & Brushcut | 12 |
| Stump Cut | 13 |
| Tree Cut..... | 13 |
| Owner Registration | 4 |
| Push Bar | 7, 15, 18 |
| Quick Couplers..... | 9, 15 |
| Shatter Resistant Cab Enclosure..... | 8, 15, 18 |
| Skid Shoes..... | 15, 18 |
| Spindle | 15, 19 |
| Spindle Bolts..... | 15, 20 |
| Spinning Issues..... | 21 |
| Transferred Ownership | 4 |
| Warranty..... | 3, 4 |



**100% SATISFACTION
GUARANTEE**
★ GET IT, LOVE IT & LEAVE IT! ★

**72-HOUR PARTS
SHIPPING GUARANTEE**