



PARTS BOOK

ROTARY HEADS

• 183cm CUT • SKID-STEER MOUNT •

DIAMOND MOWERS, LLC
350 E 60th St. North
Sioux Falls, SD 57104

FOR WARRANTY CALL DIAMOND MOWERS DIRECT:
888-960-0364
OUR TECHNICIANS WILL DIAGNOSE YOUR SITUATION
OVER THE PHONE TO GET YOU UP AND RUNNING QUICKLY.

Phone: 605-977-3300
Fax: 605-655-5870
www.diamondmowers.com

DEMAND BRILLIANCE.

© DIAMOND MOWERS, LLC



Foreword

This manual contains the parts breakdown and identification of the various components and structures that make up your mower implement.

The illustrations, drawings, and diagrams in this manual are based on the latest information available at the time of publication. Your machine may have product improvements and features not yet contained in this parts manual.

Diamond Mowers, LLC reserves the right to make changes at any time without notice or obligation.

Diamond Mowers, LLC™ and Wetblade™ are trademarks of Diamond Mowers, LLC.

This manual should be consulted prior and while assembling the unit, and anytime parts or assembly clarification is needed.

Copyright© 2016 Diamond Mowers, LLC

All rights reserved. While every precaution has been taken in the preparation of this manual, the publisher assumes no responsibility for errors or omissions. No part of this book covered by the copyrights heron may be reproduced or copied in any form or by any means – graphic, electronic, or mechanical, including photocopying, taping, or information storage and retrieval systems – without written permission of the publisher.

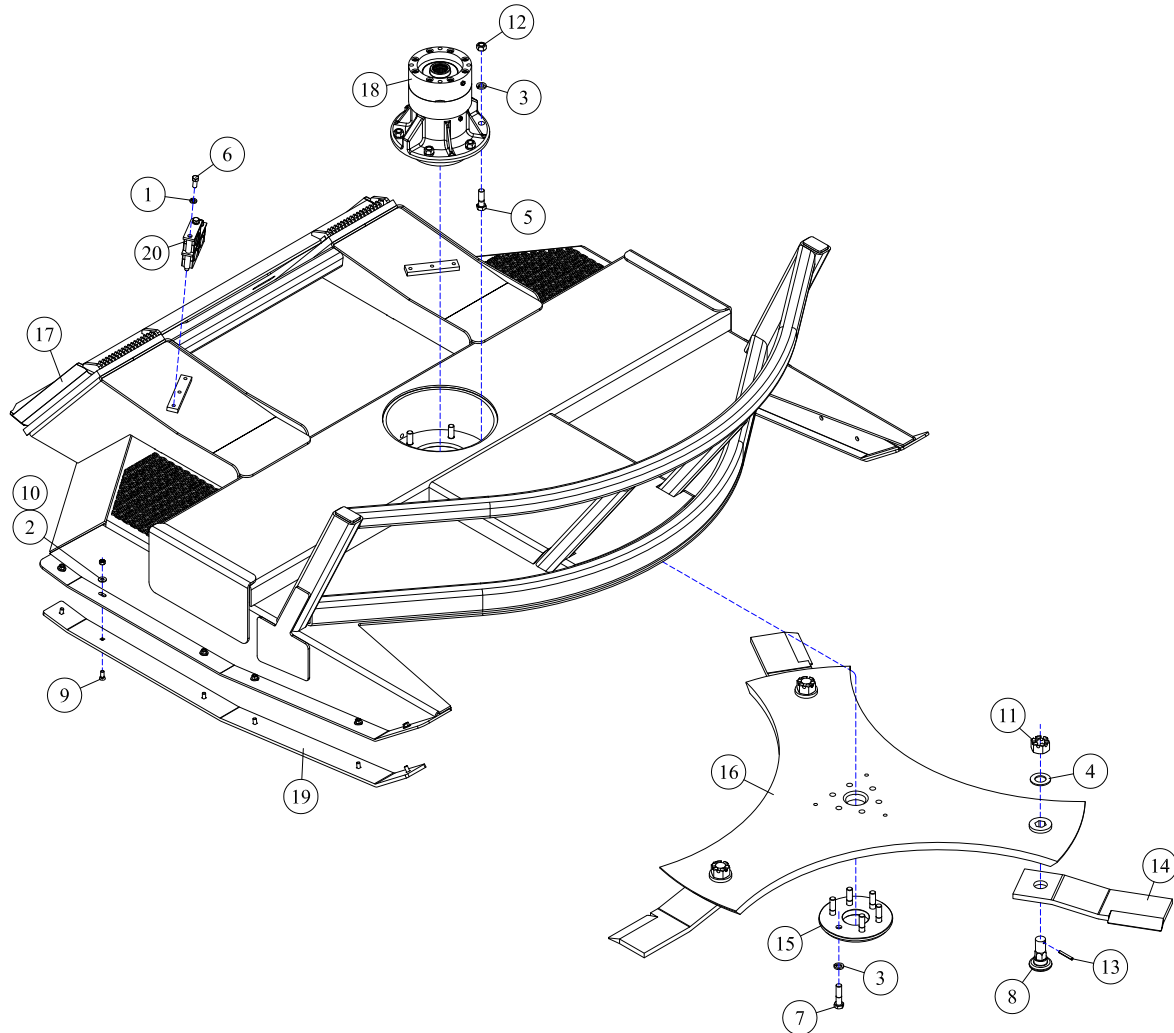


Table of Contents

ROTARY HEADS	4
ROTARY HEAD - 72"(1829mm) DECK, DIRECT DRIVE.....	5
ROTARY HEAD - 72"(1829mm) DECK, DECAL IDENTIFICATION.....	6
DRIVE ASSEMBLIES	7
HOW TO DETERMINE YOUR MOTOR PART NUMBER.....	8
DRIVE ASSEMBLY - 72"(1829mm), 65-155LPM (17-41GPM).....	9
DRIVE ASSEMBLY - 72"(1829mm), 65-106LPM (17-28GPM).....	10
DECK ASSEMBLIES	11
30-0515 - MOTOR ASSEMBLY.....	12
30-0518 - MOTOR ASSEMBLY.....	13
30-0520 - MOTOR ASSEMBLY.....	14
30-0524 - MOTOR ASSEMBLY.....	15
30-0528 - MOTOR ASSEMBLY.....	16
30-0529 - MOTOR ASSEMBLY.....	17
35-0088 - DIRECT DRIVE SPINDLE.....	18

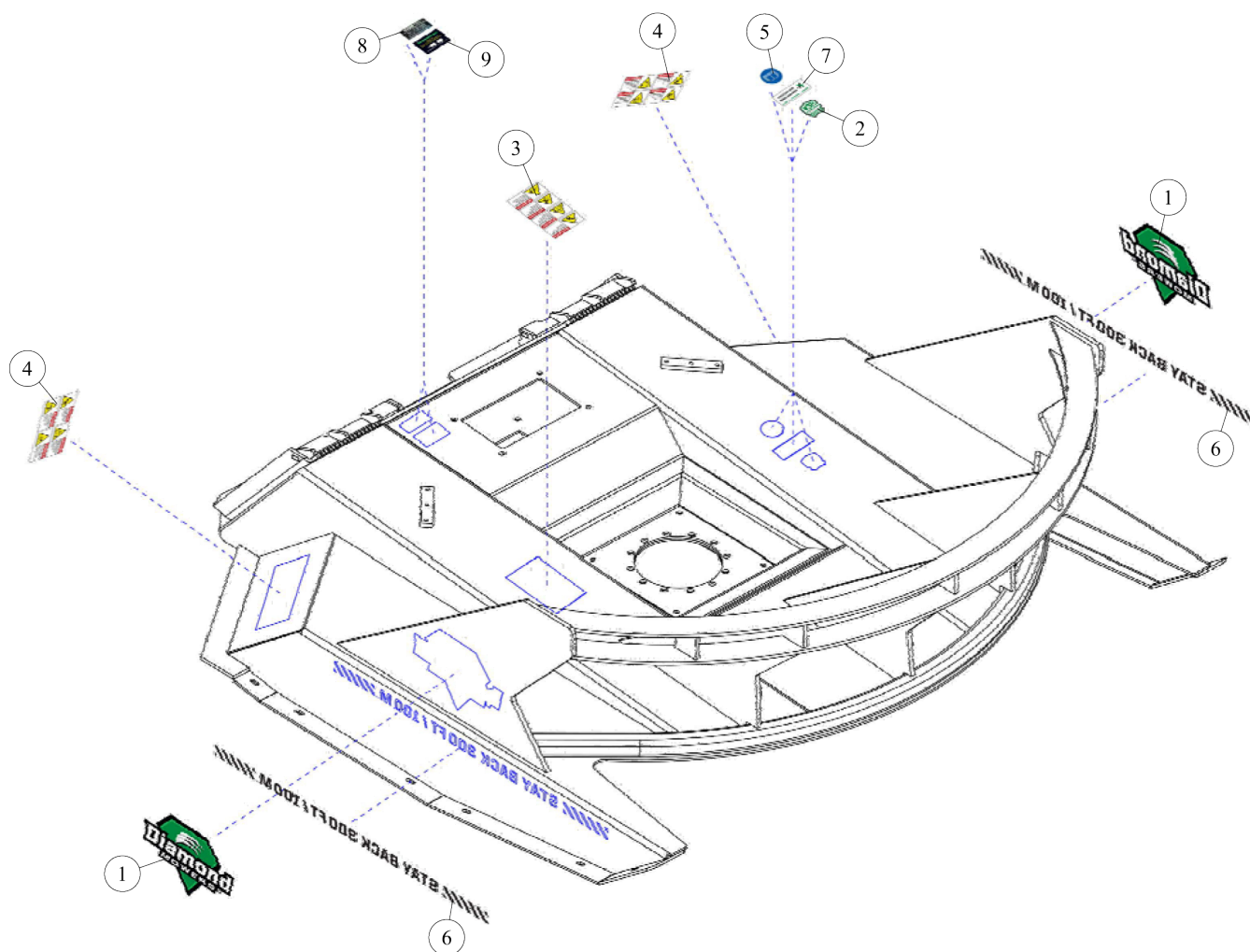
ROTARY HEADS



ROTARY HEAD - 72"(1829mm) DECK, DIRECT DRIVE

REF#	PARTS DESCRIPTION	REQ	PART #
1	7/16 LOCK WASHER GR 5	3	11-0003
2	5/16 FLAT WASHER	12	11-0015
3	5/8 H.S. LOCK WASHER	12	11-0043
4	1-1/8 H.S. SAE FLAT WASHER	3	11-0057
5	5/8 X 2 H.S. NF HEX CAPSCREW	6	11-0508
6	7/16 X 1 NC HEX CAP	3	11-0584
7	5/8 X 2-1/4 H.S. NF HEX CAPSCREW	6	11-0691
8	BLADE BOLT - HEX BASE	3	11-0759
9	3/8 X 1-1/4 PLOW BOLT	12	11-0804
10	3/8 NC NYLOCK NUT	12	11-1024

REF#	PARTS DESCRIPTION	REQ	PART #
11	1-1/8 H.S. NF SLOTTED HEX NUT	3	11-1050
12	5/8 H.S. NF STOVER NUT	6	11-1143
13	ROLL PIN, 1/4 X 2	3	11-2005
14	5/8" BRUSH BLADE	3	22-0006
15	BOLT PROTECTOR	1	24-0004
16	DISC	1	24-0151
17	72" DECK SHELL	1	25-0112
18	SPINDLE ASSEMBLY	1	35-0088
19	SKID SHOE	2	42-0032
20	HOSE CLAMP	1	44-0351

ROTARY HEAD - 72"(1829mm) DECK, DECAL IDENTIFICATION

REF#	PARTS DESCRIPTION	REQ	PART #
1	"DIAMOND MOWERS" LOGO (15 inch)	2	15-0054
2	"MADE IN THE USA"	1	15-0055
3	"DANGER" DECAL GROUP A (vertical)	1	15-0056
4	"DANGER" DECAL GROUP A (horizontal)	2	15-0057
5	"READ MANUAL"	1	15-0058
6	"STAY BACK 300ft / 100m"	2	15-0059
7	"WARRANTY AND SERVICE"	1	15-1016
8	SERIAL NUMBER LABEL (not included in kit)	1	
9	FLOW RANGE LABEL (not included in kit)	1	

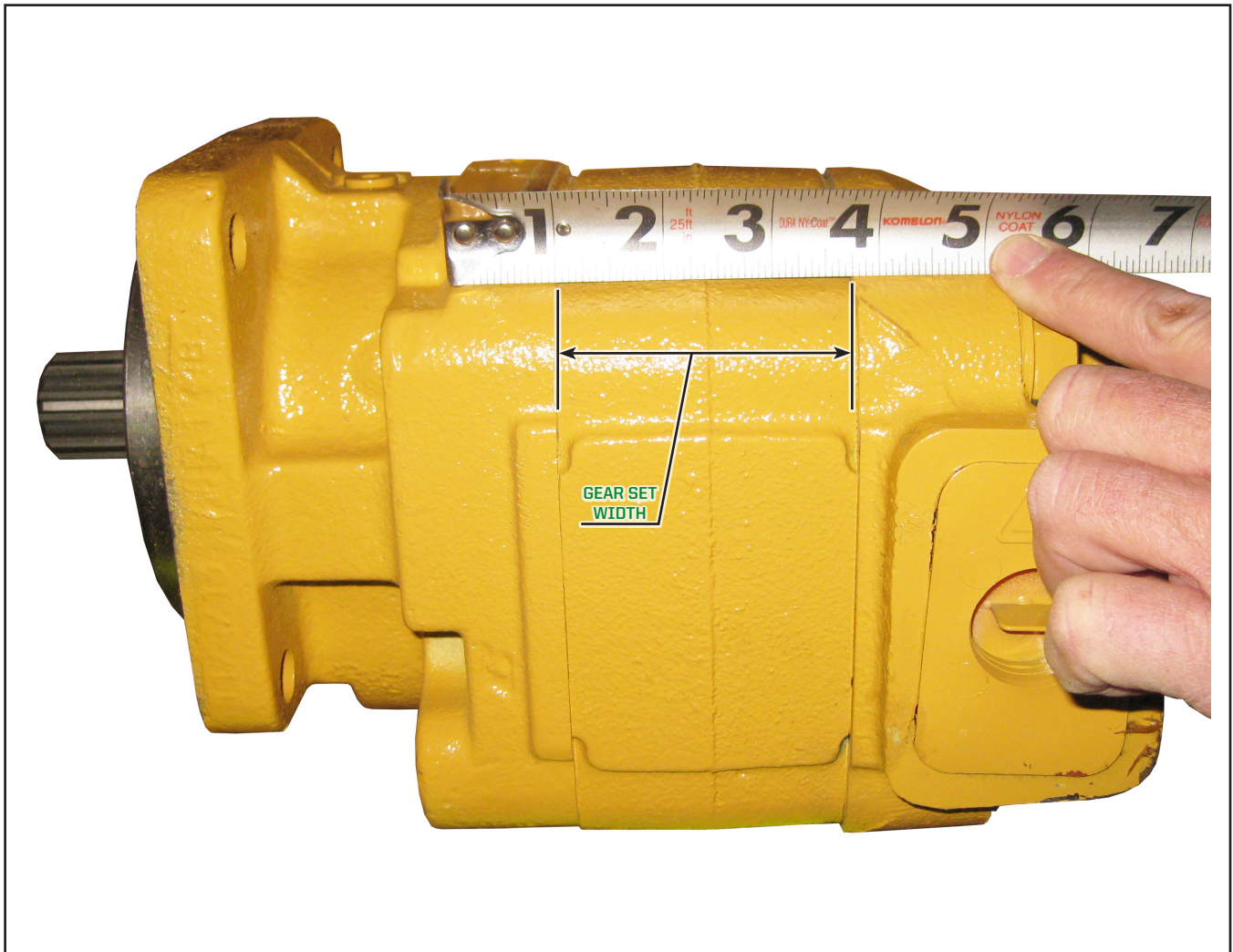
DRIVE ASSEMBLIES



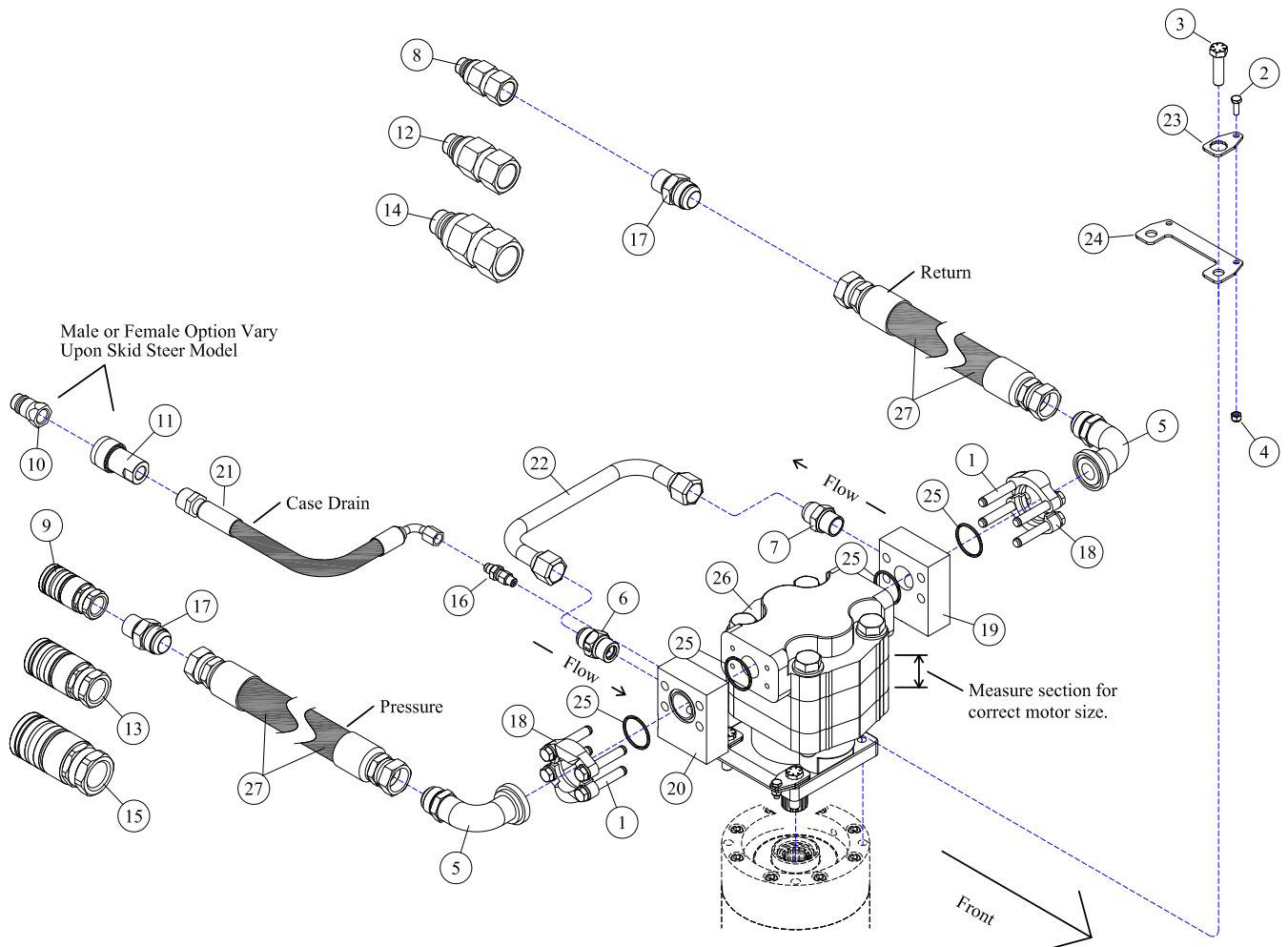
HOW TO DETERMINE YOUR MOTOR PART NUMBER

Note: The following parts pages in the **DRIVE ASSEMBLIES** section have multiple motor options; to identify which motor you have, follow the instructions below: you will have to first determine your vehicles hydraulic oil LPM requirements (i.e. 61-155LPM).

- ▷ Determine what your hydraulic oil flow requirements are for your vehicle in Litres per minute (LPM).
- ▷ Locate the **Drive Assemblies** page in the table of contents in the front of this manual that has a LPM range consistent with your vehicle's LPM requirements, and go to that page. Locate your motor part number.
- ▷ If multiple motor options and part numbers are available on your parts page, measure the width of the gear set portion of your motor to determine which part number is correct for your motor. Measure the gear set as shown in the illustration below *(see Figure 1)*.



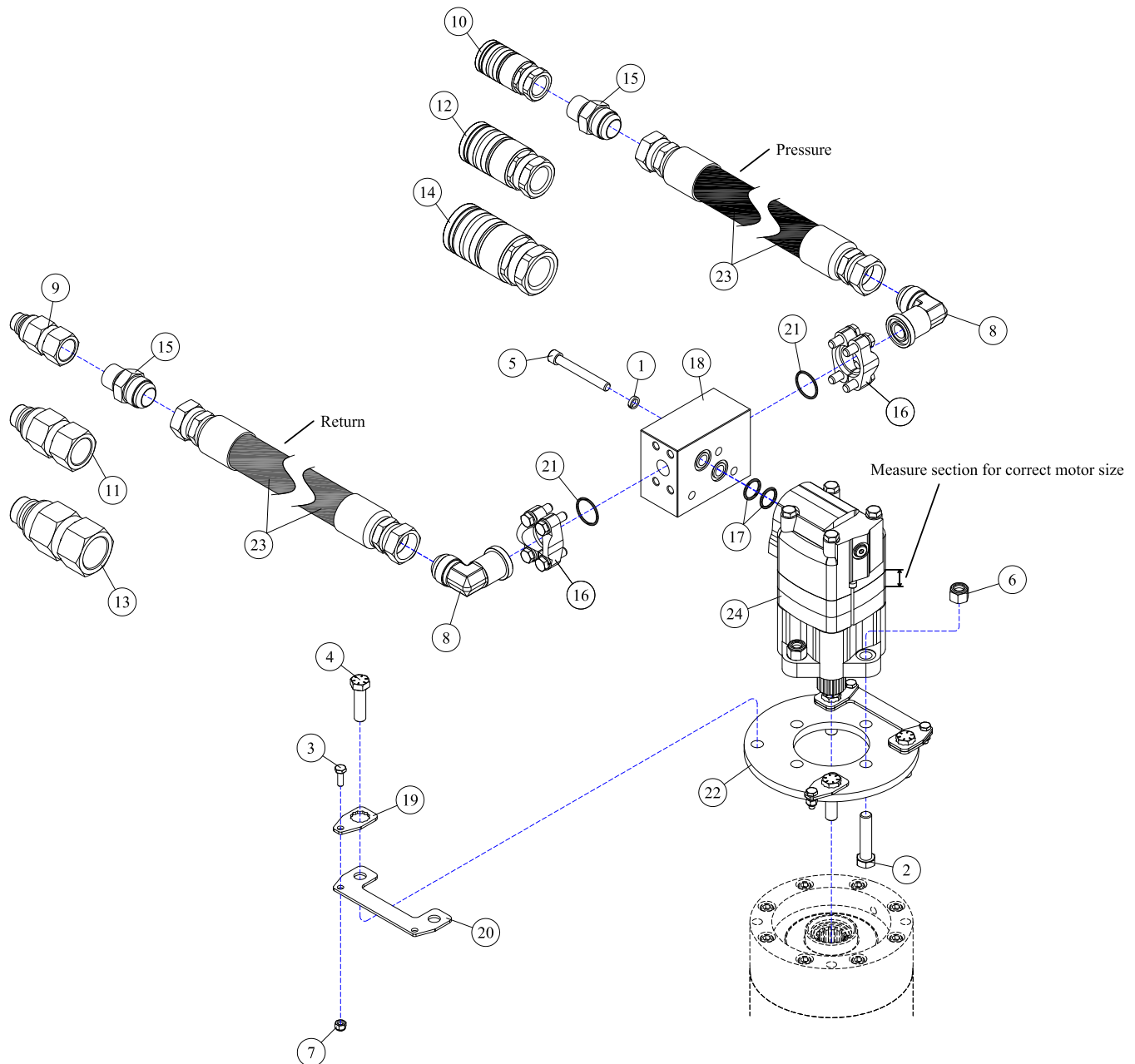
Motor - (Figure 1)

DRIVE ASSEMBLY - 72"(1829mm), 65-155LPM (17-41GPM)

REF#	PARTS DESCRIPTION	REQ	PART #
1	7/16 X 3 NC HEX CAPSCREW (included with #19 & 20)	8	11-0587
2	1/4 X 3/4 NC HEX CAP	4	11-0588
3	1/2-20 X 1-3/4 H.S. NF HEX CAP GR 8	4	11-0664
4	1/4 NC NYLOCK NUT	4	11-1022
5	#20FLG X 1MJIC-90DEG ADAPTER	2	21-1267
6	CHECK VALVE	1	21-1474
7	3/4 MORB X 3/4 MJIC ADAPTER	1	21-1475
8	1/2 MALE QUICK COUPLER, FLAT FACE	1	21-1559
9	1/2 FEMALE QUICK COUPLER, FLAT FACE	1	21-1560
10	3/8 MALE QUICK COUPLER, FLAT FACE	1	21-1561
11	3/8 FEMALE QUICK COUPLER, FLAT FACE	1	21-1562
12	5/8 MALE QUICK COUPLER, FLAT FACE	1	21-1574
13	5/8 FEMALE QUICK COUPLER, FLAT FACE	1	21-1575
14	3/4 MALE QUICK COUPLER, FLAT FACE	1	21-1576
15	3/4 FEMALE QUICK COUPLER, FLAT FACE	1	21-1577
16	ADAPTER, 1/4MOR X 3/8MJIC	1	21-1597
17	ADAPTER, 1MJIC X 3/4MORB	2	21-1602

REF#	PARTS DESCRIPTION	REQ	PART #
18	#20 FLANGE KIT (included with #19 & 20)	2	21-2105
19	CROSS OVER MANIFOLD KIT (includes #1, 18 & 25)	1	21-2180
20	TEE MANIFOLD KIT (includes #1, 18 & 25)	1	21-2181
21	HOSE 3/8 X 106 (3/8FJIC 90DEG X 1/2MP)	1	21-4290
22	RUN-AROUND TUBE	1	28-0051
23	MOTOR BOLT LOCK TAB	4	31-0503
24	MOTOR BOLT LOCK BASE	2	31-0504
25	O-RING (included with #18, 19 & 20)	4	33-0013
26	MOTOR		
	M365, 1-1/2" GEAR SET, 2" SECT, 17-22 GAL/MIN	1	30-0515
	M365, 1-3/4" GEAR SET, 2-1/4" SECT, 23-28 GAL/MIN	1	30-0520
	M365, 2-1/4" GEAR SET, 2-3/4" SECT, 29-34 GAL/MIN	1	30-0524
	M365, 2-1/2" GEAR SET, 3" SECT, 35-41 GAL/MIN	1	30-0518
27	HOSE 1 X 103 (1FJIC X 1FJIC)		
	"STANDARD"	2	21-4345
	"OPTIONAL UPGRADE" 4000 PSI	2	21-4346

DRIVE ASSEMBLY - 72"(1829mm), 65-106LPM (17-28GPM)

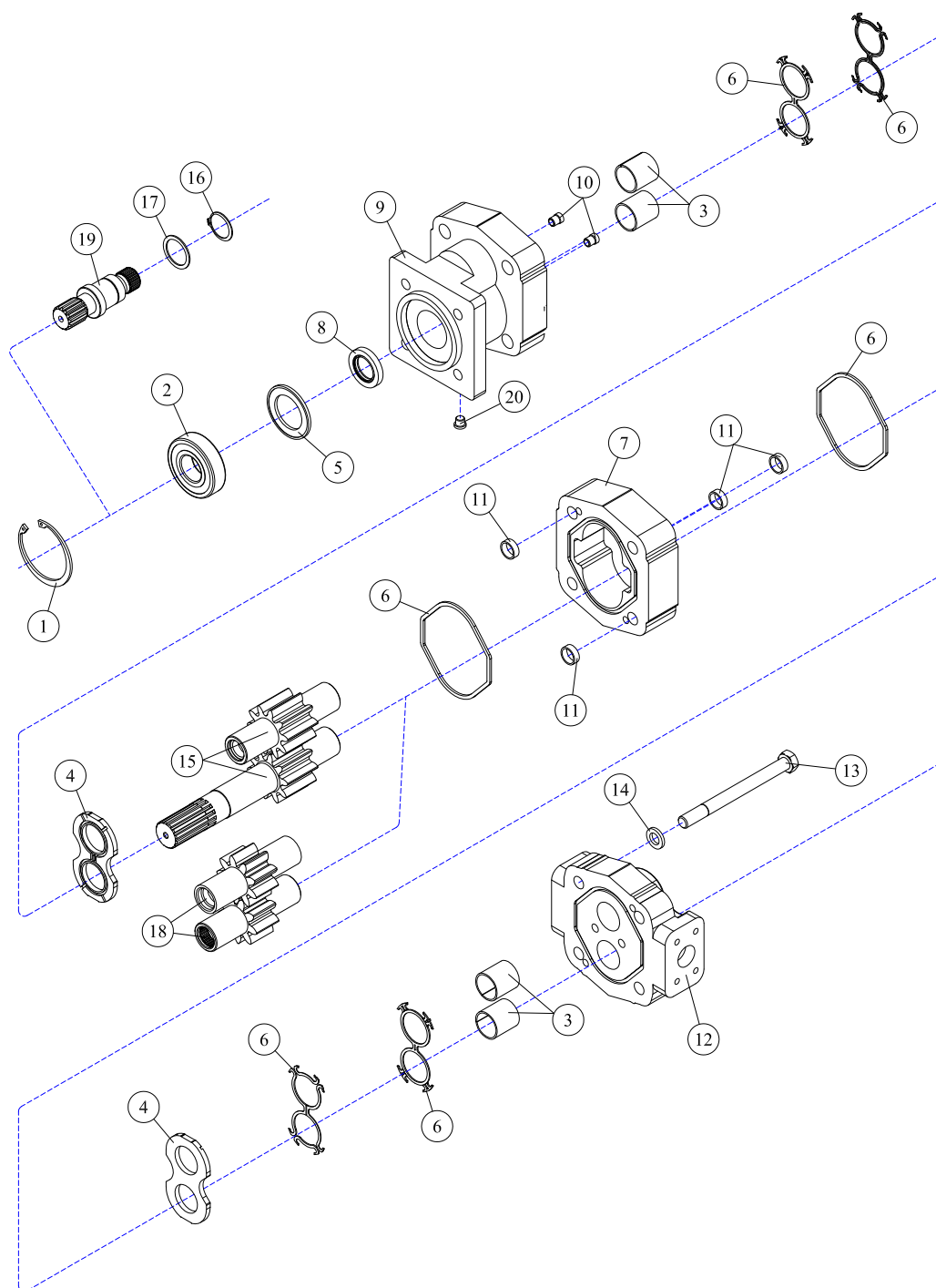


REF#	PARTS DESCRIPTION	REQ	PART #
1	3/8 HI-COLLAR LOCK WASHER	3	11-0054
2	1/2 X 2-1/4 NC HEX CAPSCREW	4	11-0531
3	1/4 X 3/4 NC HEX CAP	4	11-0588
4	1/2-20 X 1-3/4 H.S. NF HEX CAP GR.8	4	11-0664
5	3/8 X 2-1/2 NC SOCKET HEAD CAPSCREW	3	11-0701
6	1/2 NC NYLOCK NUT	4	11-1018
7	1/4 NC NYLOCK NUT	4	11-1022
8	#12FLG X 1MJIC-90DEG A DAPTER	2	21-1302
9	1/2 MALE QUICK COUPLER, FLAT FACE	1	21-1559
10	1/2 FEMALE QUICK COUPLER, FLAT FACE	1	21-1560
11	5/8 MALE QUICK COUPLER, FLAT FACE	1	21-1574
12	5/8 FEMALE QUICK COUPLER, FLAT FACE	1	21-1575
13	3/4 MALE QUICK COUPLER, FLAT FACE	1	21-1576
14	3/4 FEMALE QUICK COUPLER, FLAT FACE	1	21-1577
15	ADAPTER, 1MJIC X 3/4MORB	2	21-1602

REF#	PARTS DESCRIPTION	REQ	PART #
16	#12 FLANGE KIT	2	21-2186
17	O-RING (SMALL) (included with #30-1206)	2	30-1205
18	PRESSURE AND RETURN BLOCK (included with motors)	1	30-1206
19	MOTOR BOLT LOCK TAB	4	31-0503
20	MOTOR BOLT LOCK BASE	2	31-0504
21	O-RING (LARGE) (included with #21-2186)	2	33-0062
22	MOTOR SPACER	1	35-0075
23	<u>HOSE 1 X 103 (1FJIC X 1FJIC)</u>		
	"STANDARD"	2	21-4345
	"OPTIONAL UPGRADE" 4000 psi	2	21-4346
24	<u>MOTOR</u> (includes #30-1206)		
	2000 SERIES, 11/16" SECT, 17-20 GAL/MIN	1	30-0528
	2000 SERIES, 7/8" SECT, 21-28 GAL/MIN	1	30-0529

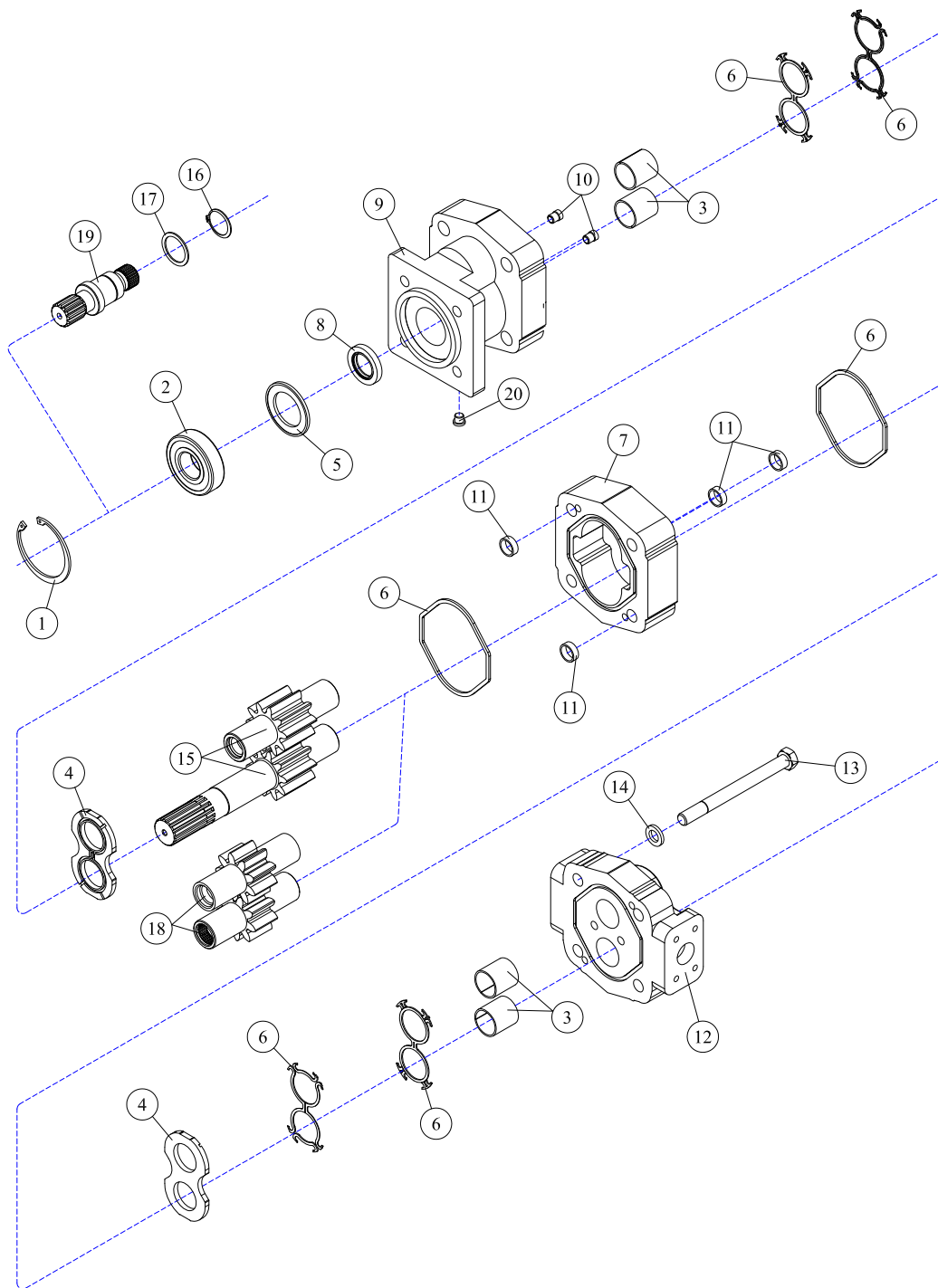
DECK ASSEMBLIES



30-0515 - MOTOR ASSEMBLY

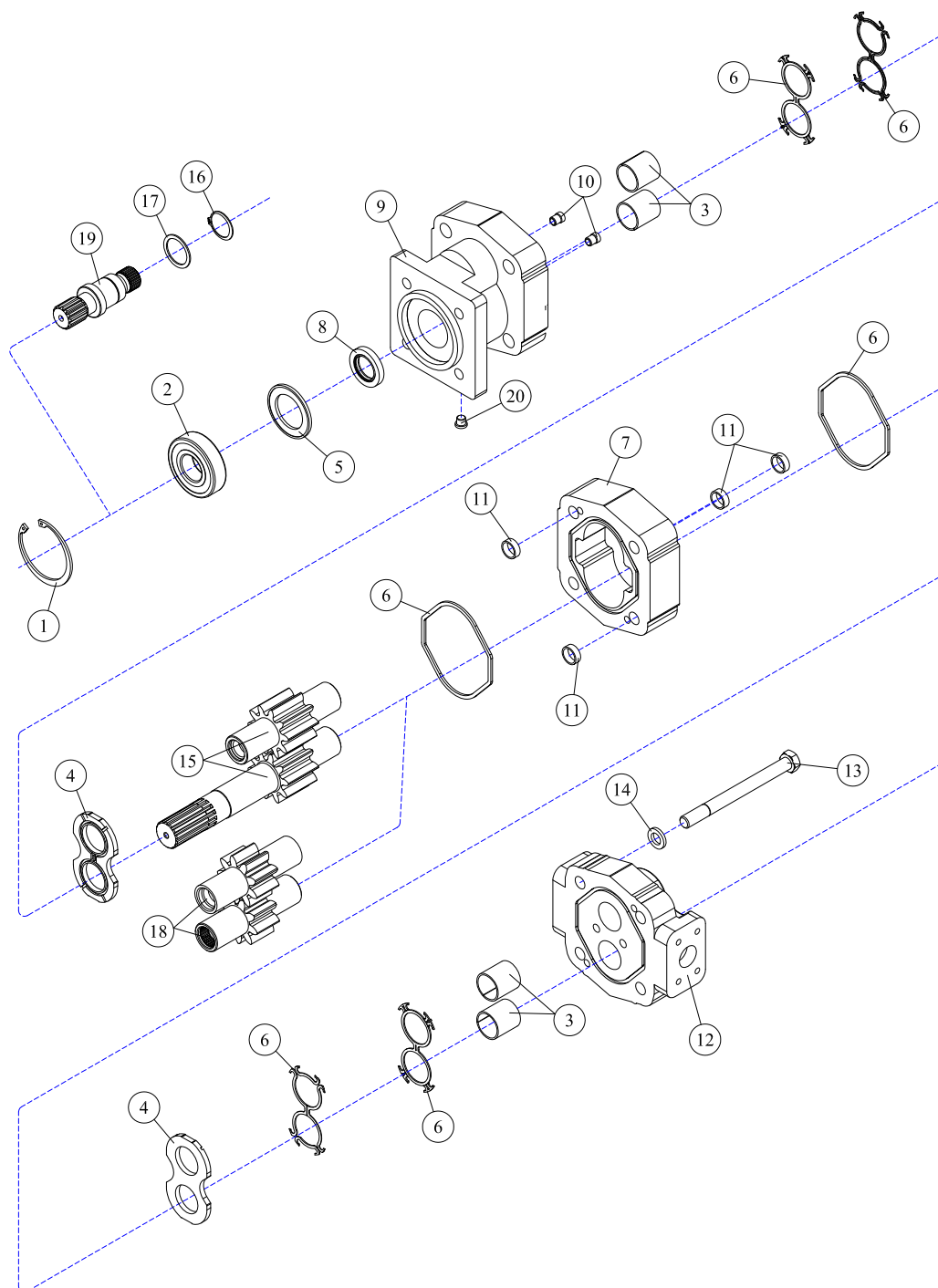
REF#	PARTS DESCRIPTION	REQ	PART #
1	SNAP RING	1	30-1009
2	OUTBOARD BEARING	1	30-1010
3	BUSHING	4	30-1011
4	THRUST PLATE	2	30-1012
5	SEAL RETAINER	1	30-1017
6	M365 SEAL KIT	Avail	30-1021
7	GEAR HOUSING	1	30-1023
8	SHAFT SEAL		
	150 PSI (included in M365 seal kit)	1	30-1210
	500 PSI	1	30-1156
9	SHAFT END COVER	1	30-1086
10	CHECK ASSEMBLY	2	30-1087
11	ALIGNMENT BUSHING	4	30-1090

REF#	PARTS DESCRIPTION	REQ	PART #
12	PORT END COVER	1	30-1091
13	STUD	4	30-1092
14	WASHER	4	30-1093
	GEAR SET OPTION A:		
15	1-1/2" GEAR SET	1	30-1159
	GEAR SET OPTION B:		
16	RETAINING RING	1	30-1019
17	WASHER	1	30-1020
18	1-1/2" GEAR SET	1	30-1022
19	CONTINENTAL SHAFT, SPLINED	1	30-1144
20	PLUG	1	30-1096
*	SEAL APPLICATOR TOOL (not shown)	Avail	30-1048

30-0518 - MOTOR ASSEMBLY

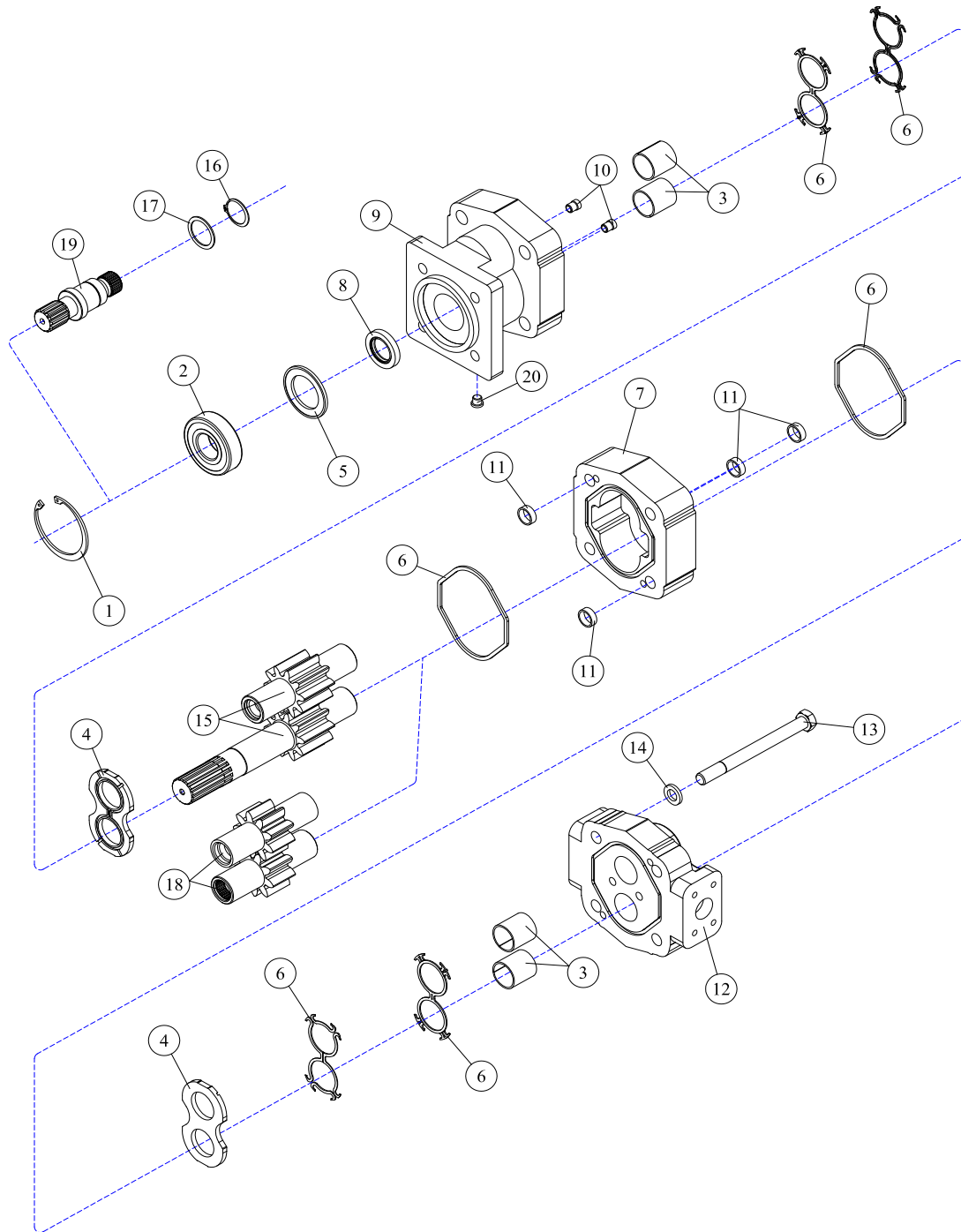
REF#	PARTS DESCRIPTION	REQ	PART #
1	SNAP RING	1	30-1009
2	OUTBOARD BEARING	1	30-1010
3	BUSHING	4	30-1011
4	THRUST PLATE	2	30-1012
5	SEAL RETAINER	1	30-1017
6	M365 SEAL KIT	Avail	30-1021
7	2-1/2" GEAR HOUSING	1	30-1137
8	SHAFT SEAL		
	150 PSI (included in M365 seal kit)	1	30-1210
	500 PSI	1	30-1156
9	SHAFT END COVER	1	30-1086
10	CHECK ASSEMBLY	2	30-1087
11	ALIGNMENT BUSHING	4	30-1090

REF#	PARTS DESCRIPTION	REQ	PART #
12	PORT END COVER	1	30-1091
13	STUD	4	30-1334
14	WASHER	4	30-1093
	GEAR SET OPTION A:		
15	2-1/2" GEAR SET	1	30-1170
	GEAR SET OPTION B:		
16	RETAINING RING	1	30-1019
17	WASHER	1	30-1020
18	2-1/2" GEAR SET	1	30-1136
19	CONTINENTAL SHAFT, SPLINED	1	30-1144
20	PLUG	1	30-1096
*	SEAL APPLICATOR TOOL (not shown)	Avail	30-1048

30-0520 - MOTOR ASSEMBLY

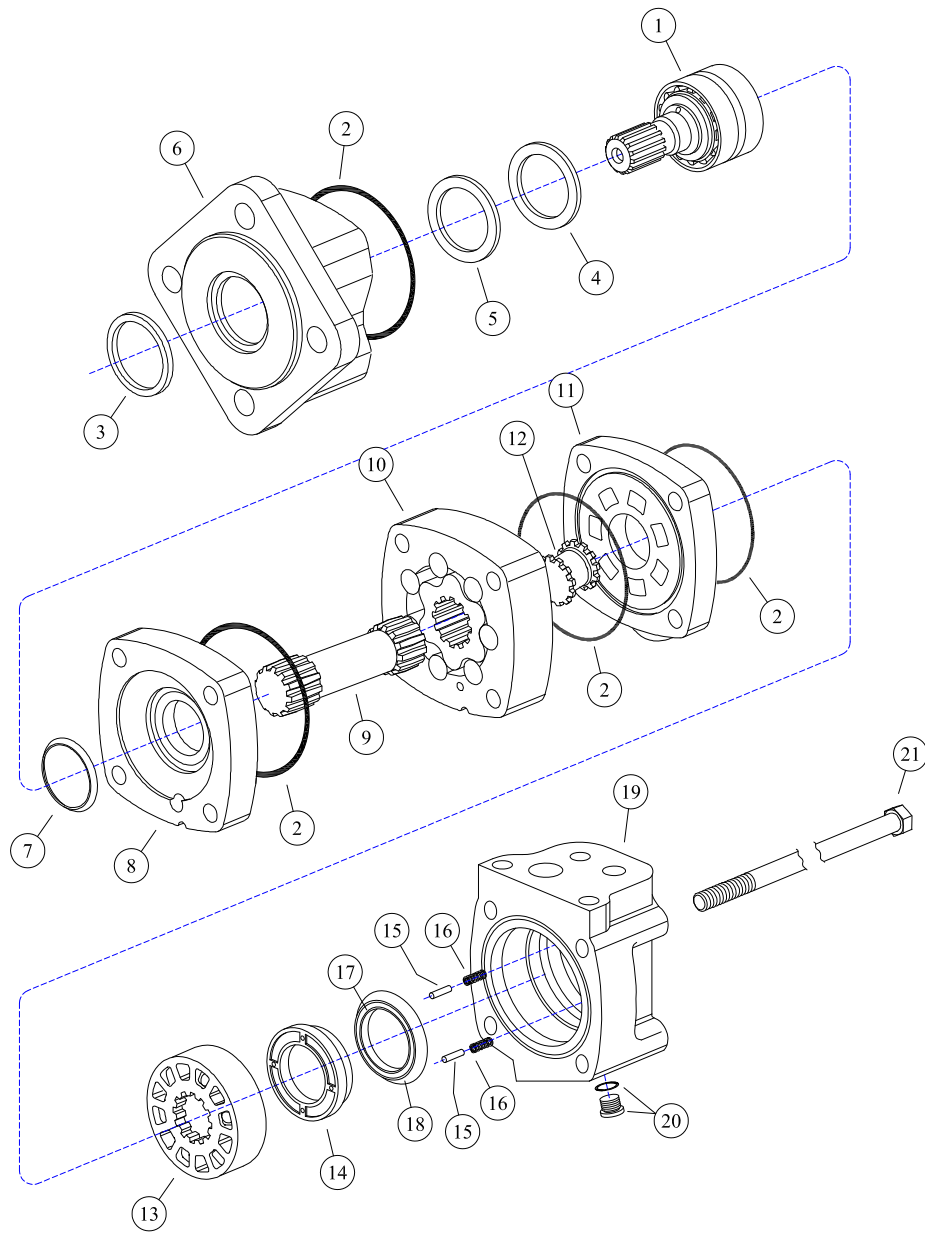
REF#	PARTS DESCRIPTION	REQ	PART #
1	SNAP RING	1	30-1009
2	OUTBOARD BEARING	1	30-1010
3	BUSHING	4	30-1011
4	THRUST PLATE	2	30-1012
5	SEAL RETAINER	1	30-1017
6	M365 SEAL KIT	Avail	30-1021
7	GEAR HOUSING	1	30-1015
8	SHAFT SEAL		
	150 PSI (included in M365 seal kit)	1	30-1210
	500 PSI	1	30-1156
9	SHAFT END COVER	1	30-1086
10	CHECK ASSEMBLY	2	30-1087
11	ALIGNMENT BUSHING	4	30-1090

REF#	PARTS DESCRIPTION	REQ	PART #
12	PORT END COVER	1	30-1091
13	STUD	4	30-1092
14	WASHER	4	30-1093
	GEAR SET OPTION A:		
15	1-3/4" GEAR SET	1	30-1166
	GEAR SET OPTION B:		
16	RETAINING RING	1	30-1019
17	WASHER	1	30-1020
18	1-3/4" GEAR SET	1	30-1013
19	CONTINENTAL SHAFT, SPLINED	1	30-1144
20	PLUG	1	30-1096
*	SEAL APPLICATOR TOOL (not shown)	Avail	30-1048

30-0524 - MOTOR ASSEMBLY

REF#	PARTS DESCRIPTION	REQ	PART #
1	SNAP RING	1	30-1009
2	OUTBOARD BEARING	1	30-1010
3	BUSHING	4	30-1011
4	THRUST PLATE	2	30-1012
5	SEAL RETAINER	1	30-1017
6	M365 SEAL KIT	Avail	30-1021
7	2-1/4" M365 GEAR HOUSING	1	30-1026
8	SHAFT SEAL		
	150 PSI (included in M365 seal kit)	1	30-1210
	500 PSI	1	30-1156
9	SHAFT END COVER	1	30-1086
10	CHECK ASSEMBLY	2	30-1087
11	ALIGNMENT BUSHING	4	30-1090

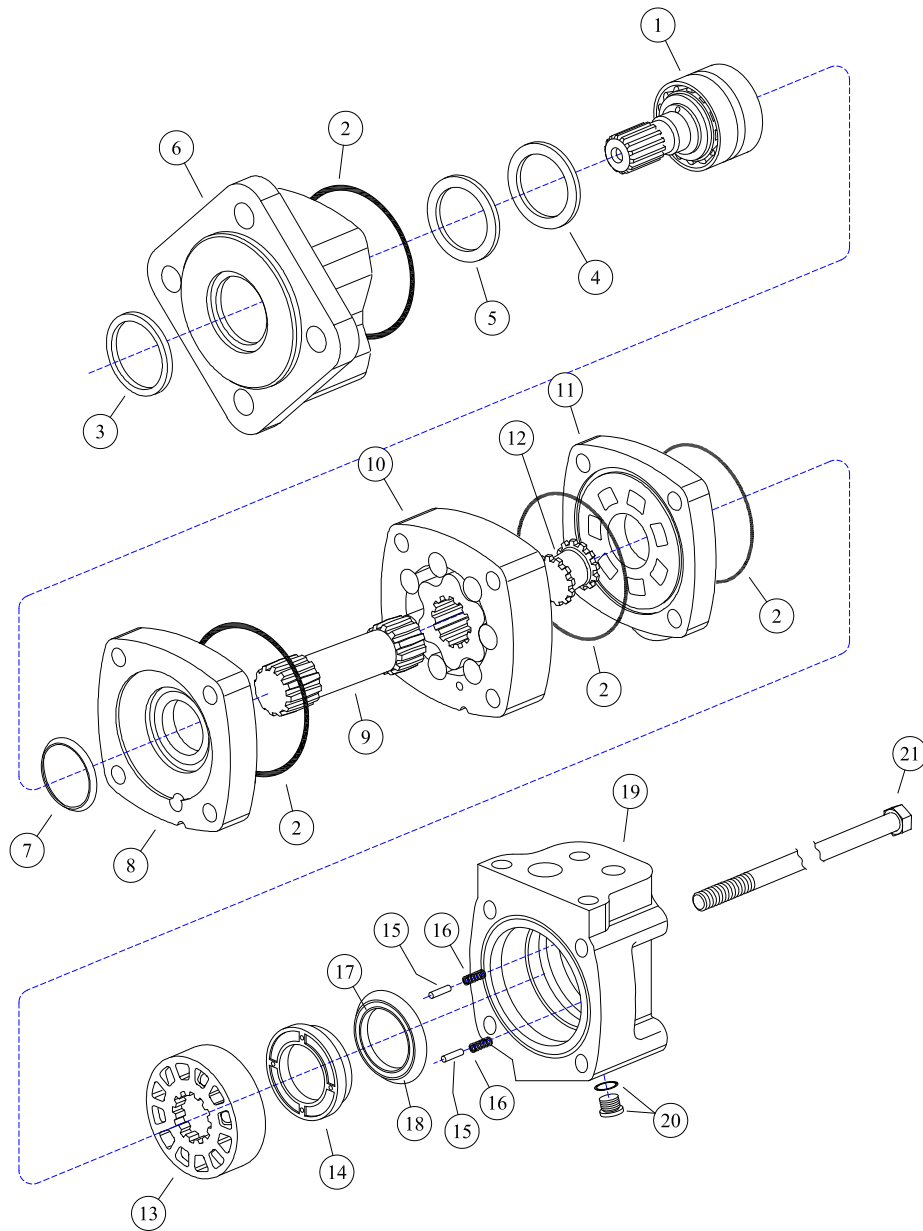
REF#	PARTS DESCRIPTION	REQ	PART #
12	PORT END COVER	1	30-1091
13	STUD	4	Call
14	WASHER	4	30-1092
	GEAR SET OPTION A:		
15	2-1/4" GEAR SET	1	30-1161
	GEAR SET OPTION B:		
16	RETAINING RING	1	30-1015
17	WASHER	1	30-1020
18	2-1/4" GEAR SET	1	30-1021
19	CONTINENTAL SHAFT, SPLINED	1	30-1141
20	PLUG	1	30-1093
*	SEAL APPLICATOR TOOL (not shown)	Avail	30-1041

30-0528 - MOTOR ASSEMBLY

* Part included with item # 22 seal kit

REF#	PARTS DESCRIPTION	REQ	PART #
1	SHAFT & BEARING KIT (1-1/4" SPLINED 14T)	1	30-1311
2	SEAL	4	30-1312
3	SEAL, EXCLUSION	1	30-1313
4	SEAL, SHAFT	1	30-1314
5	RING, BACK-UP	1	30-1315
6	HOUSING, BEARING, DIAGONAL (FOUR BOLT)	1	30-1316
7	SEAL, SHAFT FACE	1	30-1317
8	PLATE, WEAR	1	30-1318
9	DRIVE, MAIN	1	30-1319
10	GEROLER	1	30-1320
11	PLATE, VALVE	1	30-1321
12	DRIVE, VALVE	1	30-1322

REF#	PARTS DESCRIPTION	REQ	PART #
13	VALVE	1	30-1323
14	BALANCE RING	1	30-1324
15	PIN, BALANCE RING	2	30-1325
16	SPRING, COMPRESSION	2	30-1326
17	SEAL, FACE, INNER	1	30-1327
18	SEAL, FACE, OUTER	1	30-1328
19	HOUSING, VALVE	1	30-1329
20	PLUG ASSEMBLY W/ O-RING	1	30-1309
	O-RING	1	30-1330
21	SCREW, CAP	4	30-1331
22	SEAL KIT	1	33-0064

30-0529 - MOTOR ASSEMBLY

* Part included with item # 22 seal kit

REF#	PARTS DESCRIPTION	REQ	PART #
1	SHAFT & BEARING KIT (1-1/4" SPLINED 14T)	1	30-1311
2	SEAL	4	30-1312
3	SEAL, EXCLUSION	1	30-1313
4	SEAL, SHAFT	1	30-1314
5	RING, BACK-UP	1	30-1315
6	HOUSING, BEARING, DIAGONAL (FOUR BOLT)	1	30-1316
7	SEAL, SHAFT FACE	1	30-1317
8	PLATE, WEAR	1	30-1318
9	DRIVE, MAIN	1	30-1319
10	GEROLER	1	30-1320
11	PLATE, VALVE	1	30-1321
12	DRIVE, VALVE	1	30-1322

REF#	PARTS DESCRIPTION	REQ	PART #
13	VALVE	1	30-1323
14	BALANCE RING	1	30-1324
15	PIN, BALANCE RING	2	30-1325
16	SPRING, COMPRESSION	2	30-1326
17	SEAL, FACE, INNER	1	30-1327
18	SEAL, FACE, OUTER	1	30-1328
19	HOUSING, VALVE	1	30-1329
20	PLUG ASSEMBLY W/ O-RING	1	30-1309
	O-RING	1	30-1330
21	SCREW, CAP	4	30-1331
22	SEAL KIT	1	33-0064

35-0088 - DIRECT DRIVE SPINDLE

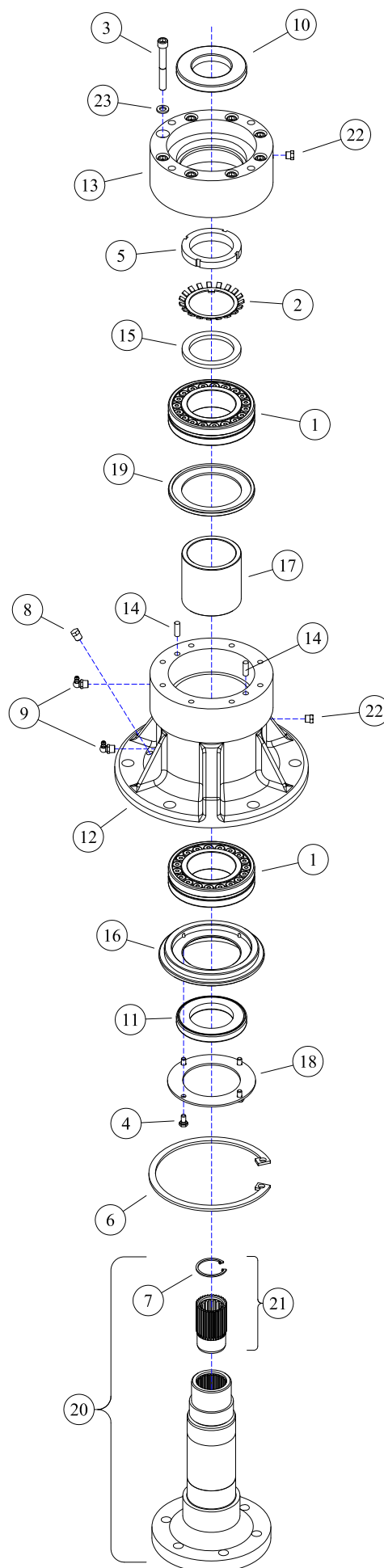
Grease with #2 lithium based grease every 500hrs.
Use 10 pumps (.44oz) into each of the two grease zerk.

Warning: Do not overgrease

Overgreasing will cause damage or premature failure of the bearings, housing & seals.

REF#	PARTS DESCRIPTION	REQ	PART #
1	BEARING	2	10-0055
2	LOCKING WASHER	1	11-0048
3	3/8 X 2-3/4 NC SKT HEAD CAPSCREW	8	11-0703
4	1/4 X 1/2 NC CAPSCREW	4	11-0741
5	2-1/2 SPANNER NUT	1	11-1037
6	LARGE SNAP RING	1	11-2021
7	SMALL SNAP RING	1	11-2022
8	PIPE PLUG	1	21-1136
9	1/8 X 90 GREASE ZERK	2	23-0005
10	UPPER SEAL	1	33-0035
11	LOWER SEAL	1	33-0057
12	SPINDLE HOUSING	1	35-0021
13	SEAL/MOTOR MOUNT	1	35-0022
14	ALIGNMENT PIN	2	35-0032
15	SPACER	1	35-0050
16	BOTTOM SEAL PLATE	1	35-0063
17	SPACER	1	35-0064
18	BOTTOM PLATE	1	35-0065
19	GREASE CATCH	1	35-0066
20	SPINDLE SHAFT COMPLETE	1	35-0090
*21	SPLINED INSERT KIT	1	35-0091
22	BREATHER	2	80-1016
23	3/8 LOCK WASHER GR 5	8	11-0005

* The splined insert kit includes the insert removal tool 11-0913.



(PAGE INTENTIONALLY BLANK)



**100% SATISFACTION
GUARANTEE**
★ GET IT, LOVE IT, *or* LEAVE IT! ★

**72-HOUR PARTS
SHIPPING GUARANTEE**