



# PARTS BOOK

## SAW HEADS

• 48" CUT • BOOM MOUNT •

DIAMOND MOWERS, LLC  
350 E 60<sup>th</sup> St. North  
Sioux Falls, SD 57104

FOR WARRANTY CALL DIAMOND MOWERS DIRECT:  
**888-960-0364**

OUR TECHNICIANS WILL DIAGNOSE YOUR SITUATION  
OVER THE PHONE TO GET YOU UP AND RUNNING QUICKLY.

Phone: 605-977-3300  
Fax: 605-655-5870  
[www.diamondmowers.com](http://www.diamondmowers.com)

**DEMAND BRILLIANCE.**

© DIAMOND MOWERS, LLC



## Foreword

This manual contains the parts breakdown and identification of the various components and structures that make up your mower implement.

The illustrations, drawings, and diagrams in this manual are based on the latest information available at the time of publication. Your machine may have product improvements and features not yet contained in this parts manual.

Diamond Mowers, LLC reserves the right to make changes at any time without notice or obligation.

Diamond Mowers, LLC™ and Wetblade™ are trademarks of Diamond Mowers, LLC.

This manual should be consulted prior and while assembling the unit, and anytime parts or assembly clarification is needed.

### Copyright© 2016 Diamond Mowers, LLC

All rights reserved. While every precaution has been taken in the preparation of this manual, the publisher assumes no responsibility for errors or omissions. No part of this book covered by the copyrights heron may be reproduced or copied in any form or by any means - graphic, electronic, or mechanical, including photocopying, taping, or information storage and retrieval systems - without written permission of the publisher.



# Table of Contents

SAW HEADS .....4

    BOOM SAW HEAD - 48" .....5

    BOOM SAW HEAD - REPLACEMENT TEETH/TIPS.....6

DECK ASSEMBLIES.....7

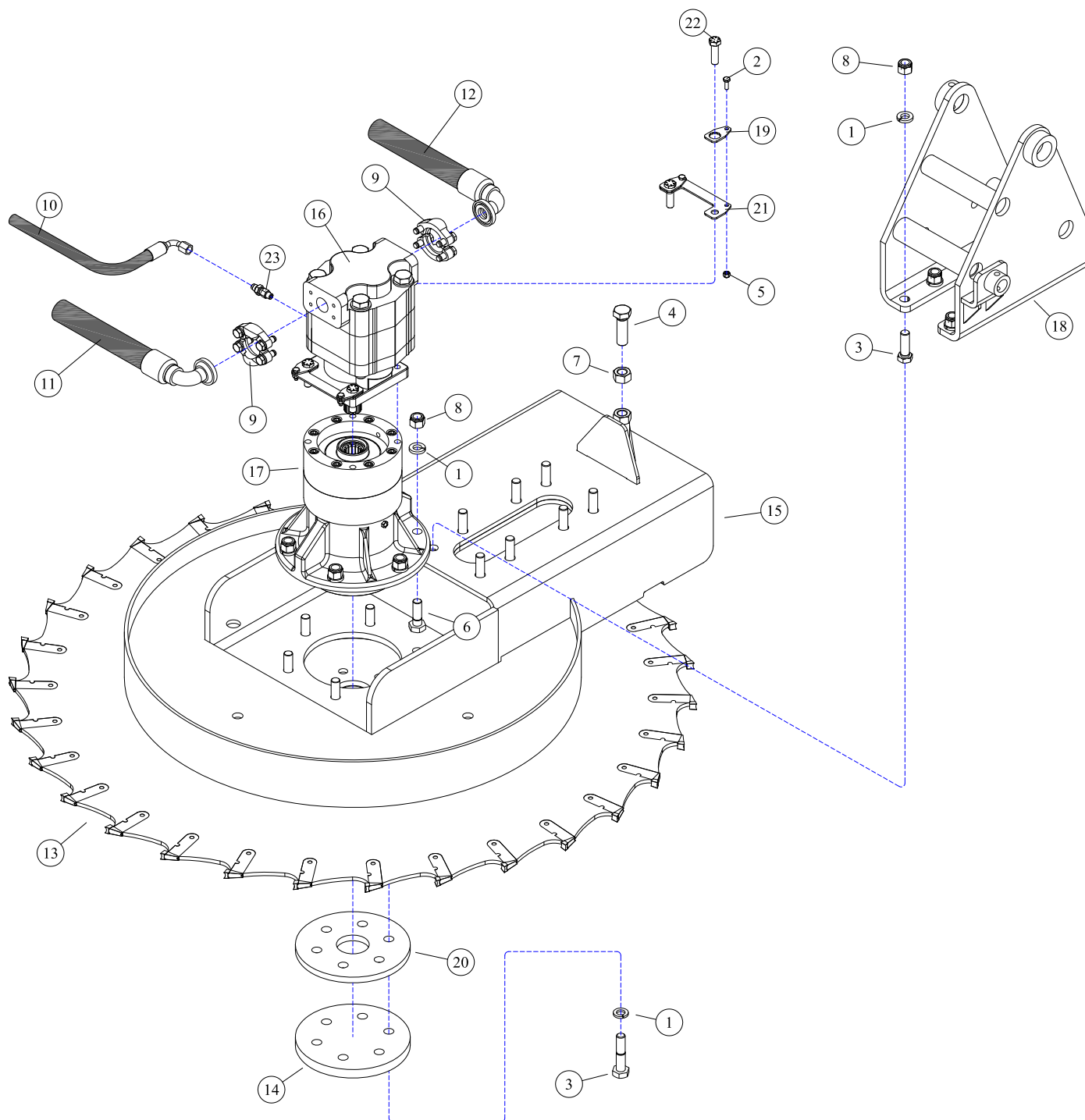
    30-0515 - MOTOR ASSEMBLY.....8

    35-0088 - DIRECT DRIVE SPINDLE .....9

# SAW HEADS

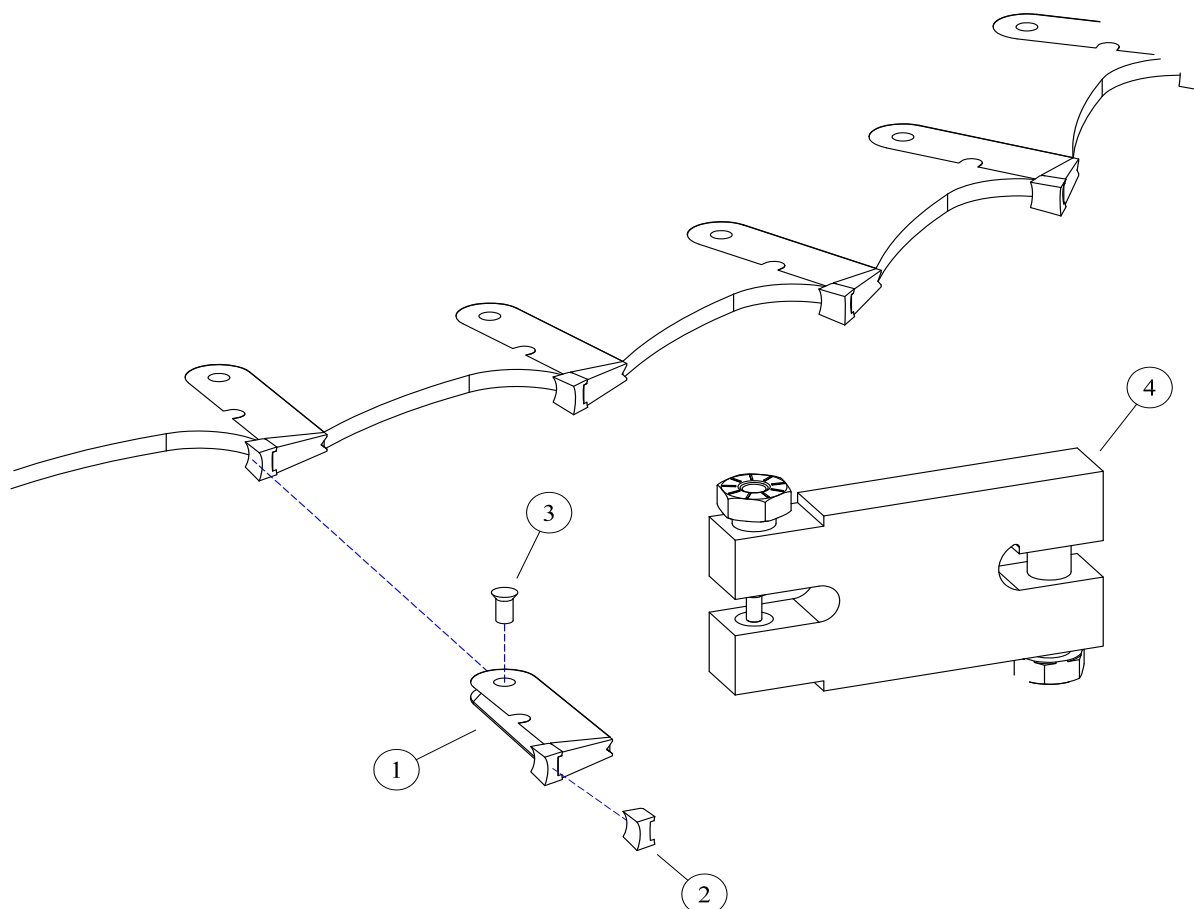


## BOOM SAW HEAD - 48"



| REF# | PARTS DESCRIPTION                       | REQ | PART #  |
|------|---|-----|---------|
| 1    | 5/8 H.S. LOCK WASHER                    | 20  | 11-0043 |
| 2    | 1/4 X 3/4 NC HEX CAP                    | 4   | 11-0588 |
| 3    | 5/8 X 2 H.S. NF HEX CAPSCREW            | 14  | 11-0508 |
| 4    | 3/4 X 3-1/2 NC HEX CAPSCREW             | 1   | 11-0551 |
| 5    | 1/4 NC NYLOCK NUT                       | 4   | 11-1022 |
| 6    | 5/8 X 2-1/4 NF H.S. HEX CAPSCREW        | 6   | 11-0691 |
| 7    | 3/4 NC HEX NUT                          | 1   | 11-1033 |
| 8    | 5/8 H.S. NF STOVER NUT                  | 14  | 11-1143 |
| 9    | #20 FLANGE KIT                          | 2   | 21-2105 |
| 10   | HOSE 3/8 X 62 (3/8FJIC-90DEG X 1/2MJIC) | 1   | 21-4304 |
| 11   | HOSE 1 X 65 (1FJIC X #20FLG-90DEG)      | 1   | 21-2516 |
| 12   | HOSE 1 X 57 (1FJIC X #20FLG-90DEG)      | 1   | 21-2517 |

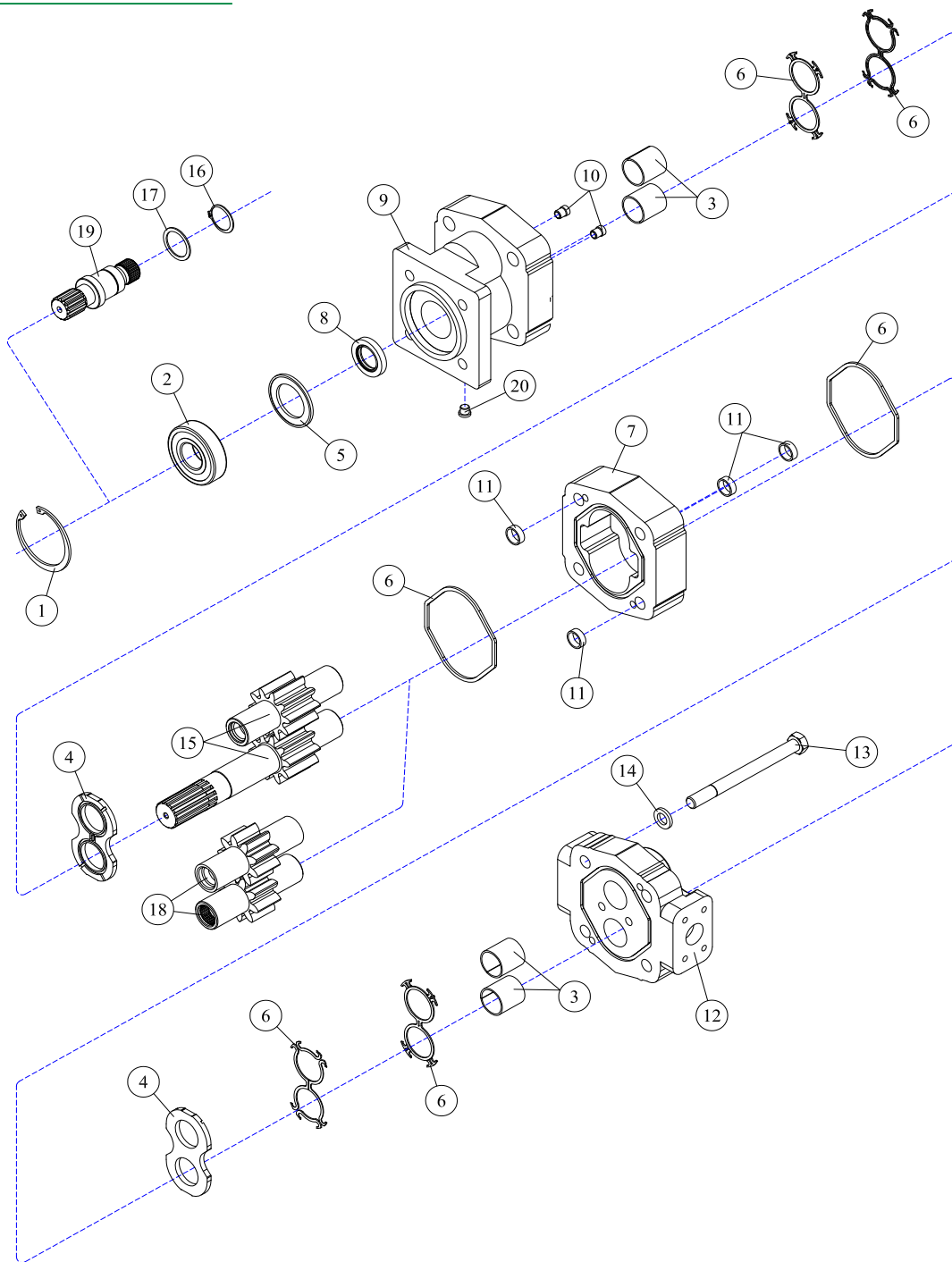
| REF# | PARTS DESCRIPTION                     | REQ | PART #  |
|------|---------------------------------------|-----|---------|
| 13   | 48" SAW BLADE                         | 1   | 22-3001 |
| 14   | BOLT PROTECTOR                        | 1   | 24-0004 |
| 15   | SAW SHELL                             | 1   | 25-0147 |
| 16   | MOTOR 365" 1-1/2" GEARS, SPLINE SHAFT | 1   | 30-0515 |
| 17   | SPINDLE ASSEMBLY                      | 1   | 35-0088 |
| 18   | MAST                                  | 1   | 41-0195 |
| 19   | MOTOR BOLT LOCK TAB                   | 4   | 31-0503 |
| 20   | BOLT PROTECTOR SPACER                 | 1   | 24-0215 |
| 21   | MOTOR BOLT LOCK BASE                  | 2   | 31-0504 |
| 22   | 1/2-20 X 1-3/4 H.S. NF HEX CAP GR.8   | 4   | 11-0664 |
| 23   | ADAPTER, 1/4MOR X 3/8MJIC             | 1   | 21-1597 |

**BOOM SAW HEAD - REPLACEMENT TEETH/TIPS**

| REF# | PARTS DESCRIPTION           | REQ   | PART #  |
|------|-----------------------------|-------|---------|
| 1    | CARBIDE TIP W/ HOLDER       | 30    | 22-3002 |
| 2    | CARBIDE TIP, REPLACEMENT    | 30    | 22-3004 |
| 3    | RIVET                       | 30    | 22-3005 |
| 4    | RIVET REMOVAL TOOL          | Avail | 22-3006 |
| 5    | SHARPENING TOOL (NOT SHOWN) | Avail | 22-3007 |

# DECK ASSEMBLIES



**30-0515 - MOTOR ASSEMBLY**

| REF# | PARTS DESCRIPTION                   | REQ   | PART #  |
|------|-------------------------------------|-------|---------|
| 1    | SNAP RING                           | 1     | 30-1009 |
| 2    | OUTBOARD BEARING                    | 1     | 30-1010 |
| 3    | BUSHING                             | 4     | 30-1011 |
| 4    | THRUST PLATE                        | 2     | 30-1012 |
| 5    | SEAL RETAINER                       | 1     | 30-1017 |
| 6    | M365 SEAL KIT                       | Avail | 30-1021 |
| 7    | GEAR HOUSING                        | 1     | 30-1023 |
| 8    | <b>SHAFT SEAL</b>                   |       |         |
|      | 150 PSI (included in M365 seal kit) | 1     | 30-1210 |
|      | 500 PSI                             | 1     | 30-1156 |
| 9    | SHAFT END COVER                     | 1     | 30-1086 |
| 10   | CHECK ASSEMBLY                      | 2     | 30-1087 |
| 11   | ALIGNMENT BUSHING                   | 4     | 30-1090 |

| REF# | PARTS DESCRIPTION                | REQ   | PART #  |
|------|----------------------------------|-------|---------|
| 12   | PORT END COVER                   | 1     | 30-1091 |
| 13   | STUD                             | 4     | 30-1092 |
| 14   | WASHER                           | 4     | 30-1093 |
|      | <b>GEAR SET OPTION A:</b>        |       |         |
| 15   | 1-1/2" GEAR SET                  | 1     | 30-1159 |
|      | <b>GEAR SET OPTION B:</b>        |       |         |
| 16   | RETAINING RING                   | 1     | 30-1019 |
| 17   | WASHER                           | 1     | 30-1020 |
| 18   | 1-1/2" GEAR SET                  | 1     | 30-1022 |
| 19   | CONTINENTAL SHAFT, SPLINED       | 1     | 30-1144 |
| 20   | PLUG                             | 1     | 30-1096 |
| *    | SEAL APPLICATOR TOOL (not shown) | Avail | 30-1048 |



**35-0088 - DIRECT DRIVE SPINDLE**

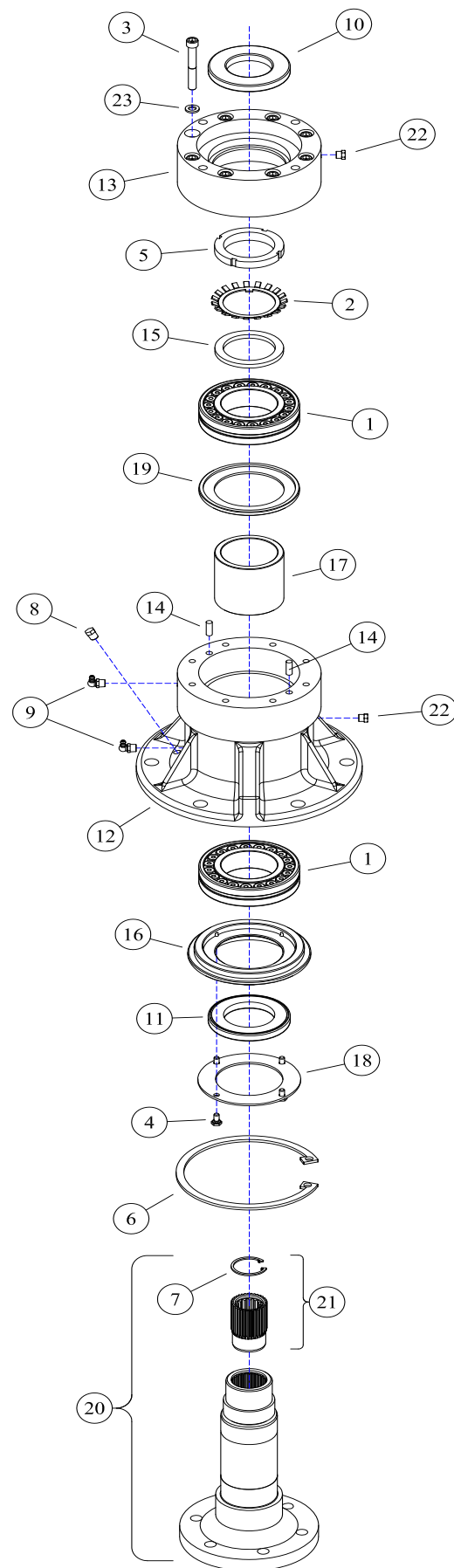
Grease with #2 lithium based grease every 500hrs.  
Use 10 pumps (.44oz) into each of the two grease  
zerks.

**Warning: Do not overgrease**

Overgreasing will cause damage or premature failure  
of the bearings, housing & seals.

| REF# | PARTS DESCRIPTION                | REQ | PART #  |
|------|----------------------------------|-----|---------|
| 1    | BEARING                          | 2   | 10-0055 |
| 2    | LOCKING WASHER                   | 1   | 11-0048 |
| 3    | 3/8 X 2-3/4 NC SKT HEAD CAPSCREW | 8   | 11-0703 |
| 4    | 1/4 X 1/2 NC CAPSCREW            | 4   | 11-0741 |
| 5    | 2-1/2 SPANNER NUT                | 1   | 11-1037 |
| 6    | LARGE SNAP RING                  | 1   | 11-2021 |
| 7    | SMALL SNAP RING                  | 1   | 11-2022 |
| 8    | PIPE PLUG                        | 1   | 21-1136 |
| 9    | 1/8 X 90 GREASE ZERK             | 2   | 23-0005 |
| 10   | UPPER SEAL                       | 1   | 33-0035 |
| 11   | LOWER SEAL                       | 1   | 33-0057 |
| 12   | SPINDLE HOUSING                  | 1   | 35-0021 |
| 13   | SEAL/MOTOR MOUNT                 | 1   | 35-0022 |
| 14   | ALIGNMENT PIN                    | 2   | 35-0032 |
| 15   | SPACER                           | 1   | 35-0050 |
| 16   | BOTTOM SEAL PLATE                | 1   | 35-0063 |
| 17   | SPACER                           | 1   | 35-0064 |
| 18   | BOTTOM PLATE                     | 1   | 35-0065 |
| 19   | GREASE CATCH                     | 1   | 35-0066 |
| 20   | SPINDLE SHAFT COMPLETE           | 1   | 35-0090 |
| *21  | SPLINED INSERT KIT               | 1   | 35-0091 |
| 22   | BREATHER                         | 2   | 80-1016 |
| 23   | 3/8 LOCK WASHER GR 5             | 8   | 11-0005 |

\* The splined insert kit includes the insert removal tool 11-0913.





**100% SATISFACTION  
GUARANTEE**  
★ GET IT, LOVE IT, *or* LEAVE IT! ★

**72-HOUR PARTS  
SHIPPING GUARANTEE**