

SKIDDRUM MULCHER OD **PRO X**



UTILITY.FLEXIBILITY.DURABILITY.





Where versatility meets productivity.

INTRODUCING THE SKIDDRUM MULCHER OD PRO X

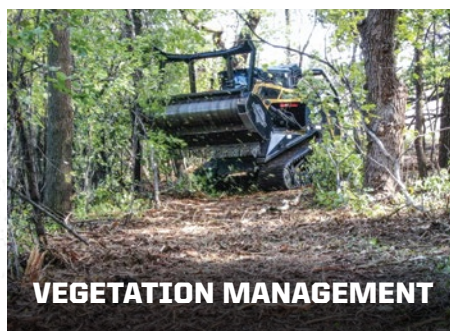
The Diamond Mowers Open Drum (OD) is a perfect fit for users requiring ground engagement and maximum flexibility for their harsh mulching needs.



LAND CLEARING

The OD Pro X is ideal for tackling mulching or brush clearing with power and precision.

- Maintaining agricultural property
- Converting land for agricultural use
- Land clearing for real estate
- Infrastructure development
- Seismic exploration



VEGETATION MANAGEMENT

Efficient solution for cutting back and processing unwanted over or undergrowth.

- Mitigate spread of invasive species
- Preserve valuable land
- Habitat restoration and maintenance



**UTILITY & ROADSIDE
MAINTENANCE**

Essential to municipal and roadside maintenance, which requires contractors to process varying types of vegetation.

- Right of way clearing
- Fire prevention
- Utility line land clearing
- Waterway clearing and maintenance

ANATOMY

60"
AND
72"
CUTTING
WIDTH

**HEAVY DUTY
PUSH BAR** FEATURES
EXTENDED SIDE PLATES
WITH SERRATIONS TO
PUSH & CLEAR BRUSH

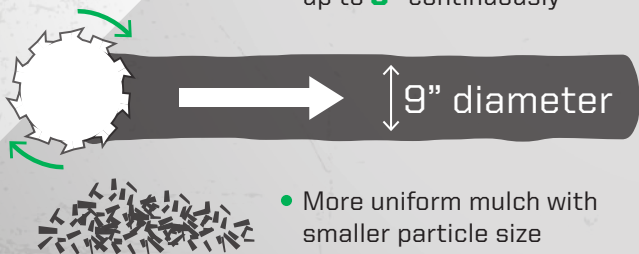
REPLACEABLE
ABRASION
RESISTANT
AR 400 LINER
MINIMIZES WEAR
FROM DEBRIS

**ACCESS
PANEL**
FOR EASE OF
MAINTENANCE

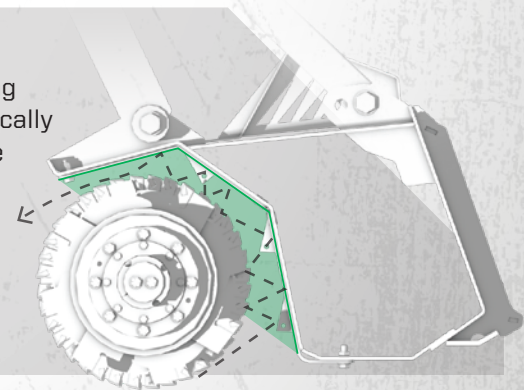
**SEVERE DUTY
RATED
BEARINGS**
PROTECTED BY
LABRYNTH
DESIGN

EQUIPPED WITH
CARBIDE TEETH FOR
LOW MAINTENANCE
DURABILITY
**Additional teeth
options available.*

**VARIABLE DISPLACEMENT
PISTON MOTOR** FOR
MAXIMUM PRODUCTIVITY



Infeed area and entire processing chamber specifically designed for the most efficient reduction of material.



PRODUCT

**CUTTING
WIDTH**

**FLOW
RATING**

WEIGHT

OF TEETH

SK DRUM MULCHER OD 60 PRO X

60"

27-50 GPM

2,350 lbs

32

SK DRUM MULCHER OD 72 PRO X

72"

32-50 GPM

2,900 lbs

40

UTILITY & FLEXIBILITY

Innovative drum design provides maximum productivity with open drum flexibility.

Engineered with an optimized infeed and bite size, the Drum Mulcher OD Pro X delivers the best of both worlds, producing a smaller end product than conventional open drum models while allowing heavy ground engagement for maximum productivity.



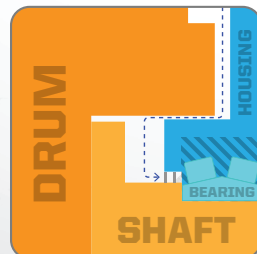
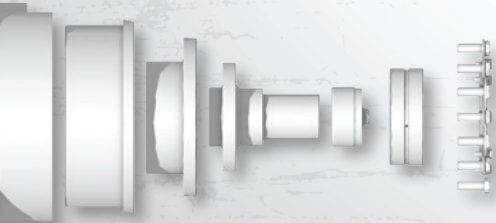
**CARBIDE
TEETH**

- Tough enough to tackle ground engaging jobs in rough, rocky terrain
- Tooth life 3-to-5 times longer than steel, and require no sharpening
- Domestically-sourced virgin carbide



**OPTIMIZED
MATERIAL INFEED**

- Effectively processes material while producing a finer mulch
- Directional rake tines disrupt material flow, deflecting vegetation back to the rotor and shredding chamber for smaller mulch after the first pass.
- Optimum shredding performed in the drum chamber reduces the need for back-dragging

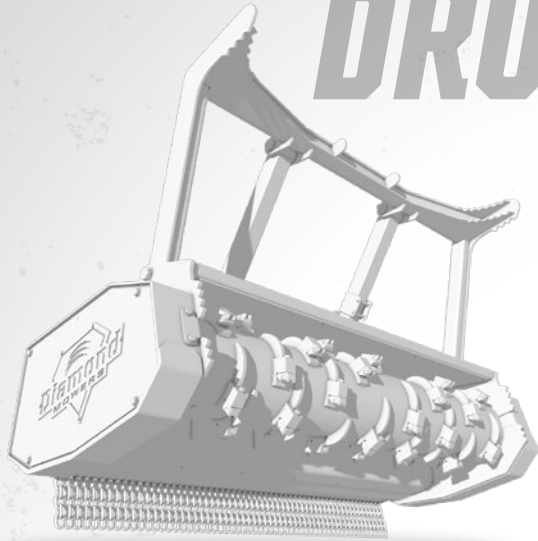


--- Path material must take to reach bearing.

SEVERE DUTY BEARINGS

- Severe duty bearings rated to 77,000+ lbs, protected by a labyrinth design and triple steel ring seals.

CHOOSING THE RIGHT DRUM MULCHER



DRUM MULCHER OD PRO X



DRUM MULCHER DC PRO X

HEAVIER
GROUND CONTACT

ROCKY
TERRAIN

SMALLER
BRUSH

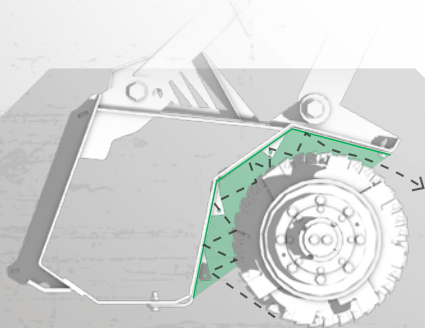
BIG
WOOD

MINIMAL
ROCKS

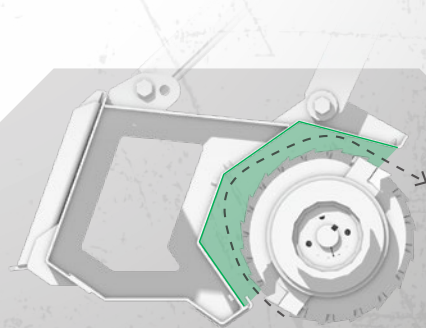
LIGHT
GROUND CONTACT

- Designed for carbide teeth
 - Withstands impact and abrasion
- Faster in smaller material < 6"
- Less maintenance, lower operating cost
 - Rental applications or hired operators
- Grinding stumps into the ground
- Incorporating mulch into the ground
 - Defensible space in western states
 - Rocky terrain
- Right of way maintenance

- Designed for sharp teeth
 - Ideal for cutting wood, dulls with ground contact
- Faster in big wood > 6"
- Sharpen/replace steel teeth
- Mulching large trees
 - Big Cedar trees on Midwest pastures
 - Large fire hazards in thick duff
 - Hard or fibrous wood
- More efficient use of available power



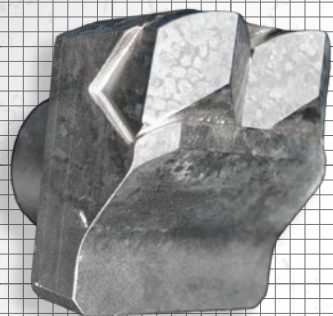
- Larger opening allows teeth to pull in whole limbs, creating mulch inside the processing chamber



- Closed throat pushes larger material into teeth, creating mulch in front and inside processing chamber

3 TOOTH OPTIONS

With a variety of tooth options, you can be sure you **have the right tool for every situation.**



TWIN MAUL®
CARBIDE TEETH

TWIN MAUL® CARBIDE TEETH have a tooth life 3-to-5 times longer than steel, and require no sharpening. Designed to withstand abrasion and ground contact, our virgin, domestically-sourced carbide is the finest available. Ideal for rocky terrain and high fire danger areas.



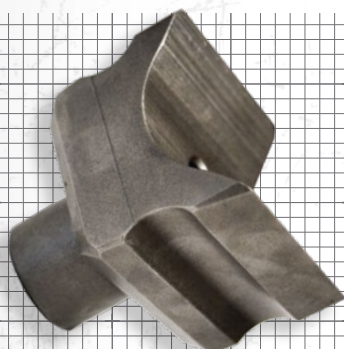
Productivity

Abrasion Resistance

Impact Resistance

Ability to be Sharpened

Life Span



TWIN CHISEL®
PLANER TEETH

TWIN CHISEL® PLANER TEETH are the best of both worlds for productivity and easy maintenance. Our design allows you to quickly sharpen the cutting edge to maintain maximum productivity. Additionally, the Twin Chisel® can be easily rotated, allowing a longer life over other steel tooth options.



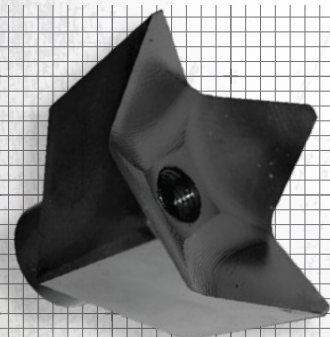
Productivity

Abrasion Resistance

Impact Resistance

Ability to be Sharpened

Life Span



FOUR-POINT
HARDENED STEEL TEETH

FOUR-POINT HARDENED STEEL TEETH act like an axe to slice material for the most productive cut. The more aggressive design allows you to grab and pull in material more effectively. These teeth can be sharpened and rotated to increase efficiency and productivity, as well as lengthen tooth life.



Productivity

Abrasion Resistance

Impact Resistance

Ability to be Sharpened

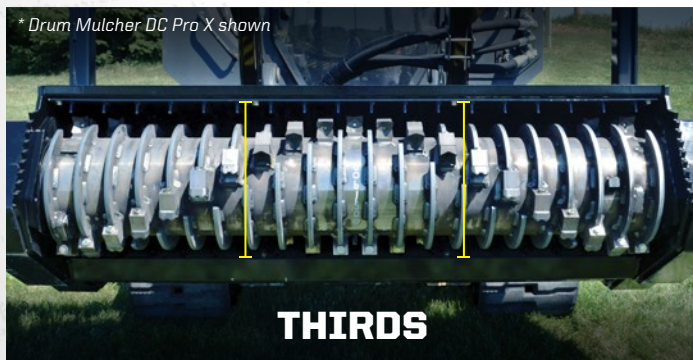
Life Span

WHICH TOOTH IS BEST FOR THE JOB?

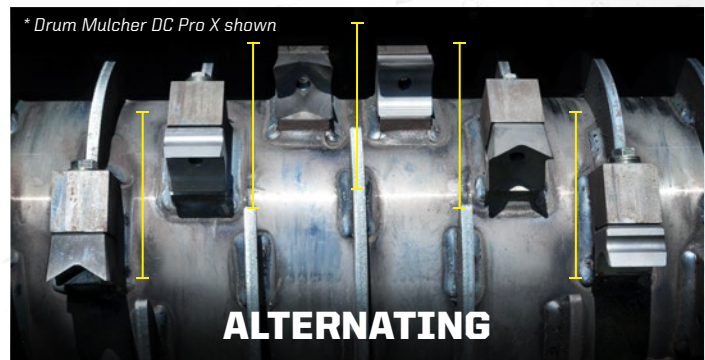
ATTRIBUTE	FOUR-POINT HARDENED STEEL TEETH	TWIN CHISEL® PLANER TEETH	TWIN MAUL® CARBIDE TEETH
Productivity	HIGH	HIGH	MEDIUM
Operating Cost/Hour	HIGH	MEDIUM	LOW
Purchase Cost	LOW	MEDIUM	HIGH
Routine Maintenance	ADVANCED	EASY	NONE
Finished Material	FINE MULCH	FINE MULCH	MEDIUM MULCH
Durability	MEDIUM	MEDIUM	HIGH



Want to mix it up? Our teeth are interchangeable, allowing you to mix and match teeth while maintaining drum balance.



You can choose to configure your drum mulcher with **TWIN MAUL®** carbide teeth on the outer edges and one of our hardened steel options in the center, as indicated above. This allows for high productivity in the center of the drum, and more durable teeth on the outside where your teeth may make more ground or rock contact. This combination optimizes productivity while minimizing your operating costs.



To reduce your routine maintenance, you can alternate our two hardened steel options on the drum. The **TWIN CHISEL®** is extremely easy to sharpen while still on the drum, making it quick to get ready for your next job. The **FOUR-POINT** is a more aggressive tooth, allowing you to grab and pull in material more effectively. Alternating these teeth gives you a good balance of productivity and ease of maintenance.

WHICH DIAMOND ATTACHMENT IS BEST FOR THE JOB?

APPLICATION	SK BRUSH CUTTER PRO	SK BRUSH CUTTER PRO X	SK DISC MULCHER PRO X	SK DRUM MULCHER PRO X
ENVIRONMENT: URBAN				●
ENVIRONMENT: SUBURBAN	●	●		●
ENVIRONMENT: RURAL	●	●	●	●
STANDARD FLOW SKID-STEER	●	●	●	●
HIGH-FLOW SKID-STEER	●	●	●	●
MATERIAL: GRASS	●	●		
MATERIAL: 0" - 5" TREES & BRUSH	●	●	●	●
MATERIAL: 5" - 9" TREES & BRUSH		●	●	●
MATERIAL: 9"+ TREES & BRUSH			●	

APPLICATIONS

Most productive on →

OVERGROWN
PROPERTY



INVASIVE
TREES



UTILITY & ROADSIDE
MAINTENANCE



PROPERTY
DEVELOPMENT

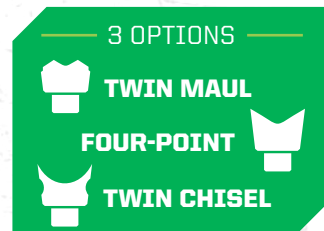


THE DIAMOND DIFFERENCE

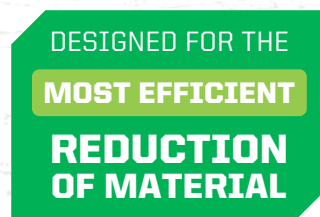
BEARINGS



TEETH



PROCESSING CHAMBER



UNPARALLELED CUSTOMER SERVICE



[Specifications and design subject to change without notice.]

CONTACT
US →



Info@DiamondMowers.com



www.DiamondMowers.com



+1 605.977.3300